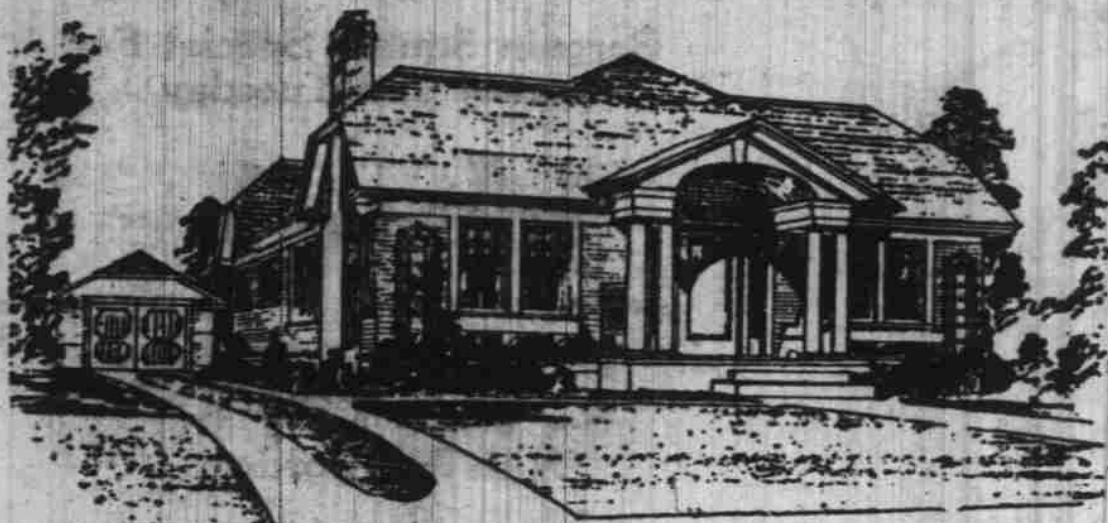


OWN YOUR HOME

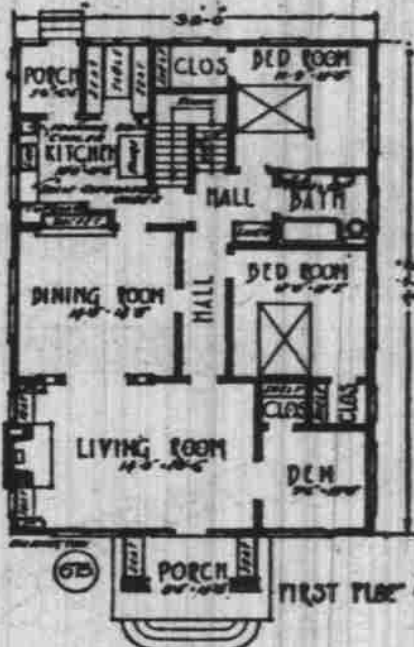
Wilmington—An Interesting Design



THE exterior of Wilmington, while not strictly colonial, has enough of the colonial to make it an interesting design. The rather formal entrance with turned columns, the seats at the sides and the trellis at the corners add attractiveness.

The interior is arranged for six rooms, all on one floor. An enclosed stair leads to the attic, which can be used for storage or in case of necessity for sleeping quarters. Living and dining rooms are separated by a large arch. This and the fireplace at the end of the living room, with built-in seats and bookcases, are features of these rooms. A china-closet is located at the end of the dining room. The kitchen is exceptionally complete, being provided with cupboards and bins, a cooler and an ironing-board. A generous-sized breakfast-alcove is provided at the rear. Besides having two good bedrooms and a bath, all accessible from the hall, there is a den at the front, directly off the living room. Closets and linen-cases are arranged for the bedrooms. The stair to the basement and attic is placed at the rear of the hall.

The basement, being the full size of the house, provides ample space for storage, laundry, fuel and furnace.



Let Us Figure With You on Your New Home

CHESTER E. LEE Contractor and Builder

1070 N. Twentieth

Near Parrish School

Watch this space for new plans each week

ELKS' TEMPLE ALMOST DONE

Building Will Be Ready By July 1, Opening Date; Work Is Being Rushed

Without a hitch the new Elks temple will be ready for the opening date by July 1, according to the statement of those in charge. Already the scaffolding has been removed and most of the exterior work has been done. The new \$200,000 edifice for the local order of the Elks, makes a new era in modern buildings of the city.

Three sides of the temple will be faced with brick of a buff, or grayish brown color. The corners and windows are marked with stone slabs of white, while the doors and entrances are distinctive with the arches of the same stone. The rear wall is to be finished in a stucco that will match the color of the brick.

The main entrance of the building is on the north side and faces State street, open directly into a vestibule, which is bordered on the right by a cloak room and a writing room on the left.

The plaster work within the building is nearly finished, the plumbing has been completed and preparations are underway to pour the cement for the floors. Some of the detail plaster work will be done at a later date.

Floors are to be covered with a rubber tiling and it is absolutely necessary that the cement work be dry, in order to prevent checking of the flooring.

Rooms of the new building are to be appropriately placed. The lounge foyer measured 54 by 26 feet, is to be in the two front corners of the lower floor. A billiard room will be located in the southwest corner and will be about twice as large as the lounge room, while just back of these will be the secretary's office, the kitchen, pantries and entrance to the stairs.

In the southeast corner is to be the dining room, measuring 25 by 40 feet. However it will be possible to serve dinners in the dining room or in the large banquet room that will be located on the floor above. A modern lift will serve to bring the food from the kitchen to the serving rooms, which is designed to adjoin the magnificent dining room. This room, which is equipped with a stage at one end will be 52 by 70 feet.

The women are to be cared for by the rest rooms that have been placed at the east center of the first floor. Entrance to this place may be made from Cottage street.

The lodge room at the south-west corner of the floor is 52 by 70 feet and is also equipped with a platform. A fireproof moving picture projection room is at the north end of the hall. A balcony has been made close to this room.

Father Ricard Explains Method Weather Prediction

Father Ricard of Santa Clara college, nationally known as the "Padre of the Rains," as a recent guest of the Sacramento Chamber of Commerce spoke before a meeting of that organization which was devoted to a discussion of the astronomical work of the past twenty-five years at the Santa Clara observatory.

He declared that without question the studies of this time indicated the relation of sun spots to the weather of the earth, and from his long years of work he has been able to make weather predictions which are made public each month.

Questioned regarding the fact today is not stormy and rainy, according to his last forecast, Father Ricard smiled and reminded his questioners that Sacramento is not the center of his California prediction and that the storm he predicted had visited Coast points last night and today with a rainfall. He also reminded them that storms often come and go much more quickly than anticipated, so the impression is given his predictions are not dependable.

Of particular interest to California farmers was his statement that a study of drought conditions in the State show a regular recurrence of such conditions. It is from one of these periods that California is now emerging and hence the next few years will doubtless show a greater rainfall than the past three.

He said: "It is well for the people to know about the periodic happen-

ings and actions which govern droughts in California.

"My studies show that a sun spot period of 11.78 years governs droughts. That is, every 11.78 years there is a drought. The sum of these, or practically twenty-one years, shows an even sixty-two years there is an even greater drought and an even more severe drought. These drought periods last from two to three years. The present period began in 1921 and hence is just about over.

"If our observations had covered a greater period of time we believe the facts would show the culmination of these in a period of 163 years.

"The fundamental reason for the 11.78 year period is based on observations of the sun spots. We know that when the latter give out drought is at its worst, while upon their reappearance conditions become better at once and a rainier period is at hand.

"The reason for these sun spots seems, from observations, to lie in the planets Saturn and Jupiter. When these get on the same side of the sun there is a shower of meteors on the equatorial zone of the sun. This causes a great agitation which renders the spots invisible and lasts for two or three years. This happens every twenty years, but every ten years the same two planets are on opposite sides of the sun, causing less trouble on the equatorial zone of the sun and consequently less heat is thrown on the earth and the drought conditions are not so bad."

He concluded by urging chamber of commerce, city and state leaders and governing bodies to take into consideration the effect of drought and profit by the knowledge of coming droughts so as to protect the farmers.

"You are particularly fortunate in this part of the state in having the great Sacramento river for your water supply," he said, "but other parts of the state are not so fortunate. It should be the duty of chamber of commerce, the legislature and those who have the keeping of the temporal prosperity of the state in hand to prepare in some manner for these droughts."

GASOLINE SALES GAIN IN FEBRUARY

Increase Over Corresponding Month in 1924 Is Nearly 35 Per Cent

The state tax on gasoline and distillate collected on sales made during the month of February, 1925, amounted to \$201,309.25, according to a statement compiled by Secretary of State Sam A. Kozar.

Taxes were remitted on 6,505,573 gallons of gasoline and 248,006 gallons of distillate. Of the total collected, the sum of \$66,295.78 resulted from the operation of the original law imposing a tax of one cent per gallon on gasoline and one-half cent per gallon on distillate, while \$135,013.47 was returned under the additional tax law providing for a uniform rate of 2 cents per gallon on all kinds of motor vehicle fuels.

As compared with the month of February, 1924, gasoline sales increased approximately 25 per cent, distillate sales increasing approximately 70 per cent.

To date the motor vehicle fuels tax measure have brought to the state treasury the total sum of \$3,087,366.50. Of the amount collected under the law of 1921 there has been returned up to March 30, 1925, the sum of \$245,789.64 to operators of farm tractors, motor boats, commercial cleaning establishments, etc., pursuant to that provision authorizing refunds of taxes on such motor vehicle fuels as are used for purposes other than in the operation of motor vehicles upon the public highways.

Two important amendments to the refund law were made by the recent legislature. The time for filing claims for refunds, at present 90 days, was extended to one year, and the rate of refund on distillate was changed to 2 1/2 cents per gallon, to include the tax paid under the law of 1919. These changes will be effective on and after May 28th next. The refund rate on gasoline will remain at 2 cents, as at present, and the increased rate on distillate will apply only to purchases made after the new law becomes effective.

Motor vehicle fuel taxes are credited to the state highway fund becoming available for expenditure in the construction and maintenance of state highways.

To trade: \$60 lady's plush coat, also girls, for load of hay.—Littleton Independent.

RIGDON MORTUARY SITE PURCHASED

Property Adjoining Valley Motor Company Purchased By Company

Purchase of the property formerly occupied by the Rigdon mortuary by the Valley Motor company, which adjoins the Rigdon property, was made this week. The consideration involved was approximately \$17,000.

The old building, which faces the west on High street, between Court and Chameketa, will either be torn down or moved to some other location. It is understood that the Salem Business and Professional Women's club is contemplating its purchase and utilizing it as a club house some place further removed from the business district.

Construction of a modern fireproof building within 30 days will begin by the Valley Motor company, who will use a portion of the new building, leasing the ground floor. The new building will match the construction of the present location of the motor company.

NE WHOME ON N. CHURCH
L. A. Jacobs has given a contract to Chester E. Lee, local contractor, for the erection of a bungalow on North Church street. The estimated cost of the house is \$5000. The finish will be stucco with a red composition roof.

Wanted: 10,000 loathsome black beetles, by a tenant who agreed to leave premises in the same condition in which he found them.—Jophan Independent.

Build That Home Now

Savings are building many a home and putting a family in possession of its own property, so that rent-money actually becomes an investment. Building is resuming everywhere. Spring is finding many a family getting ready to move into "A Home of Our Own." You can build this year. Don't put it off longer. Make it a point to look over our stock and get prices, we have everything in building material, lumber, Sherwin Williams Paint, builder hardware, lime, cement, plaster, shingles, and wall board. Our prices are right. If you need a carpenter, or a man to shingle, we will get you a good reliable man for either. Just call me up by phone 813.

Here are a few special prices on good low grade materials.

4-inch rustic	\$18.00 per thousand
6-inch rustic	\$22.50 per thousand
6-inch 4 to 9 ft., best grade	\$22.50 per thousand
1x4 and 2x4, not culls	\$16.00 per thousand
Standard shingles	\$ 2.10 per thousand
Good 6-inch ceiling	\$22.50 per thousand
Ship-lap, not culls	\$16.50 per thousand

COBB & MITCHELL CO.

A. B. KELSEY, Manager

349 South Twelfth St., near Thos. Kay Woolen Mill Mills at Falls City and Valzets

MUSICIANS DECIDE TO HOLD FESTIVAL IN PRAGUE

PRAGUE, April 4.—The International Association of modern music will hold its annual festival this year again in Prague, during

the month of May. Three international concerts will be given, leading modern composers being on the program. The second part of the festival will be heard in Venice in September.

BUSINESS BLOCK IS CONTEMPLATED

Nelson Bros. Acquire Property on North High and Will Improve Same

Further development of the northern section of the downtown business section is indicated in a sale consummated this week by the W. H. Grabenhorst & Co. real estate firm.

A. C. Nelson, A. J. Jacobs and E. E. Ling, who are in the plumbing and heating business under the name of Nelson Bros., have purchased a full lot on High, two lots north of the Newton-Chevrolet agency at High and Chameketa streets, and intend to improve the property. The consideration is said to have involved \$12,000.

The lot has a frontage of 82 1/2 feet on High and a depth of 165 feet. At present an old frame dwelling is located on the property but this will be removed to make room for a modern business building.

The property was purchased through the Grabenhorst firm from Mrs. Ella B. McDowell of San Jose, Cal.

YMCA Building Plans Are Expected to Be Ready Soon

Within a period of ten days the plans for the new YMCA building will be completed, according to the latest word from Portland. Kenneth Legge, local architect who has been working in the plans with George Whiteside are doing everything possible to get the papers ready for the contractors. It is expected that the contractors will start active building operations by May 1.

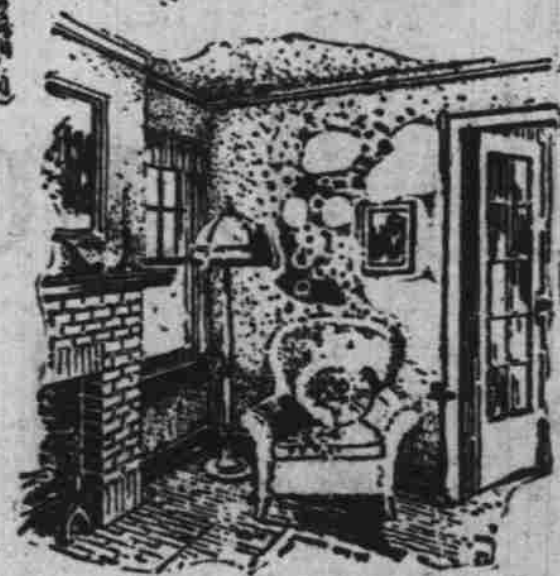
YOUR PLUMBING IS THE THING — YOU SHOULD THINK OF THIS SPRING

SPRING

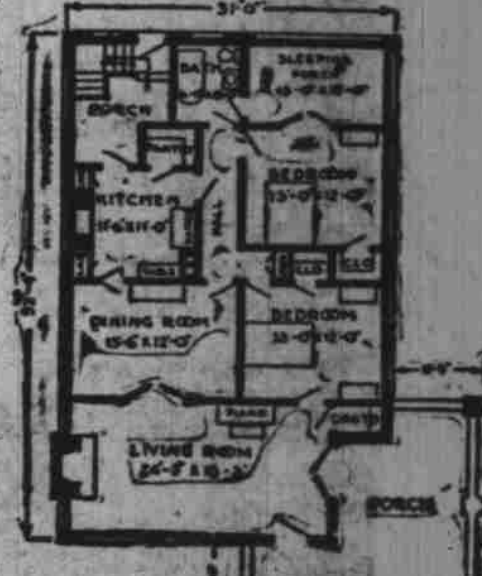
NELSON BROS.

355 Chameketa Phone 1900

Simplicity with a Note of Distinction



House No. 613



Designed for American Face Brick Association

SIMPLICITY does not mean lack of interest in a well-designed house. In fact, in the small house simplicity is essential in giving the house distinction. Meaningless ornamentation, heavy eaves, ponderous pillars are the ruin of many a bungalow.

The designer of this house has been exceptionally successful in creating a charming house without adding costly features to create interest. He has taken a simple design, and by skill and attention to details given it unusual distinction.

With this type of house, simple in its outline, much thought should be given the type of face brick to be used and how it should be handled in the wall. The color of the mortar, the treatment of the joint, and the kind of bond are things often overlooked, but which, if given careful consideration, will greatly enhance the beauty of the brickwork, much to the advantage of the whole house.

The living room and dining room in this bungalow are very large and comfortable. There is a cozy brick fireplace at one end of the living room, while French doors at the opposite end open to a fine, large porch.

The porch at the side of the house may be screened, or glazed and used as a room, while

the small portion in the front serves as an entrance only. An always useful coat closet is found conveniently near the front door.

The bedrooms are well lighted, have good closets, and are connected with the bath by a convenient hall. A sleeping porch is also provided at the rear of the house.

As many hours in each day are spent in the kitchen, it should be as pleasant as possible and so arranged as to save time and steps. The kitchen here is exceptionally complete and convenient. The sink is set beneath a group of two windows flanked on the sides by cabinets.

The table is so placed with a serving door above it that things may be passed directly from the kitchen to the sideboard of the dining room. The rear porch is large and has space for the icebox. It is enclosed and contains the basement stairs.

A fifty-foot lot would be required on which to build this bungalow as shown in the plan, but the porch may easily be moved to the front of the house, making it adaptable to as small a site as thirty-seven and a half feet. This bungalow may be built on a sloping site by making a slight change in the front or rear steps.

CHARTER OAK

The Ultimate in Range Value

Charter Oak Ranges are absolutely the best range on the market today regardless of price.

Cast iron construction assures you a maximum of heat from a minimum of fuel.

So sure are we that you will be satisfied that we give our personal guarantee that the range will give absolute satisfaction in every respect.

Priced \$72.00 to \$100.00

The \$100.00 Range is wholly enameled—giving entire absence from blacking and polishing.

Square Deal Hardware

220 N. Com'l St.

Phone 1650