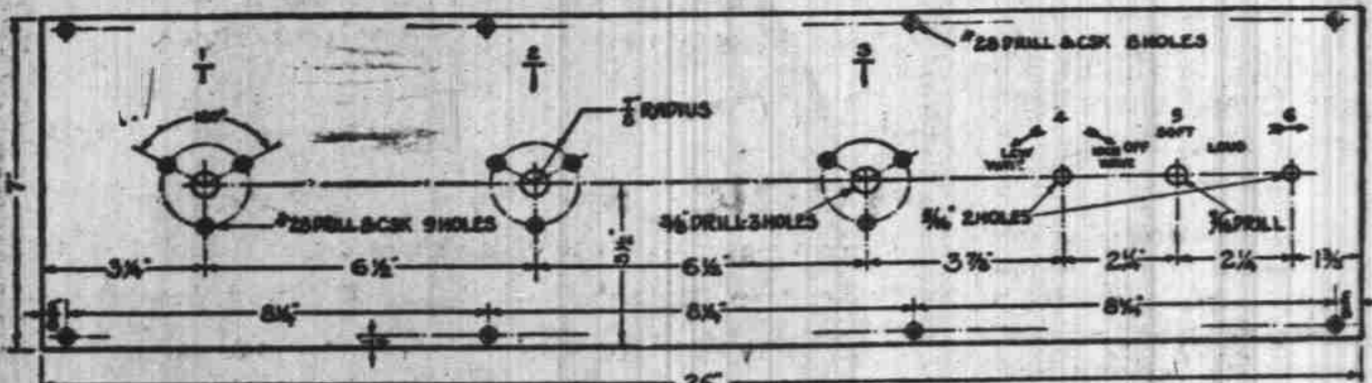


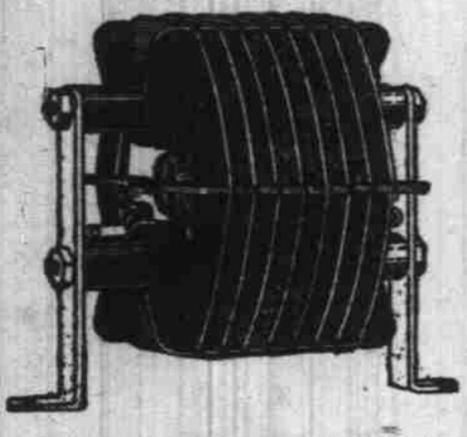
When it comes to the subject of loud speakers, naturally a good one is advised. You get just what you pay for! The cheaper the price, the poorer the quality. It will surprise many, to know how much the loud speaker has to do with satisfactory reception. The tips on the cord are plugged into the two midget jacks. If one of the ends of the cord has a colored thread in the braiding, it should be connected to the jacked marked plus X in the picture diagram figure 7.



PANEL LAYOUT IS HERE SUGGESTED

Crowding Instruments Must Be Avoided for Best Results With Any Set

The use of a seven by twenty-six inch panel permits satisfactory spacing of the three variable condensers and the paddlewheel coils



NEW PADDLEWHEEL COILS

so as to avoid coupling in the radio frequency stages. Trying to save a few inches of panel stock and crowding the apparatus close together will soon convince the constructor of his foolishness when he starts operating the set. Compactness may be desirable but not at a sacrifice of quality and efficiency. All told there are only six units that amount on the panel. The three variable condensers are kept to the left as shown in figure 6. The next knob is the variable resistance, then comes the stage control switch and last the rheostat, which controls the lighting of all five tubes.

DES MOINES STAGES DEALER-HELP PLAY

Every conceivable argument that a farmer might have for not purchasing a Ford sedan is raised and successfully combated by the salesman in "The Road to the Dotted Line," the four-act play that is being presented to the

dealers in the Des Moines branch territory.

Realizing that during the winter months it would be practically impossible to get all the dealers and salesmen to come into the branch to witness a performance of the play, and desiring to prove the fallacy of blizzards, snowdrifts

and bad roads being obstacles to sales efforts, it was decided to take the message in the form of the play out in the field so that as many as possible could profit by the lesson. In addition to the play, the Ford films, "Fording the Lincoln Highway" and "Flexibility," are shown.

The RADIO PHAN Talks

By F. S. BARTON

Has your boy ever been particularly interested in pyrex glassware? Did he ever hover around the kitchen range, getting under foot and occupying all the available space, while his eyes rested fondly and speculatively on pyrex dishes that were being heated in the oven and out again? No! Well, he may be doing that very thing soon.

The best radio sockets are now said to be made of pyrex. Low loss, perfect insulation, magical terms that compel a boy's attention.

Can't you see that speculative look that will come to your boy's eye as he considers the possibilities that may be inherent in any piece of pyrex?

Pa has come into his own! Not so long since he had to grin sheepishly at the usual run of jokes about gorgeous Christmas gifts for all of the family, paid for out of pa's old leather wallet, while the poor duffer himself gratefully accepted the few socks and neckties that came his way. He looked with embarrassment at pictures of "pa" pushing the lawn mower around under a blazing sun while his family waved goodbye on their way to the seaboard.

But now! Pa pushes 'em all away from in front of the set, shoos the noisest one out of the room, and sits down with a confident smile to enjoy himself. Jazz, song, show stuff—he's quite adept when it comes to picking out a program. He is having one grand time suiting himself.

The new hook-ups are fewer than they were—and better. Some fine results are being obtained by some of the fans. Superhetrodyne, neutrodyne, reflex, each has its enthusiastic followers.

Salem's "DX Hounds" are conquering new worlds nightly. Patience and stick-to-it-iveness are essential to success along this line, but these things cease to be virtues when exercised unwisely by regenerative set owners—Tune, brothers, tune with care. Bloopers have no right to the air. A bloop by a careful fan is rare; A careless timer raises your hair. While a novice bloopers just everywhere. Tune, brothers, tune with care!

USEFUL POINTERS TO REMEMBER

Don't leave your carburetor adjustment to some one else. Do it yourself.

Don't expect perfect results at once.

Make your tests on the road under actual driving conditions. Simply opening the throttle is not enough.

Remember that your carburetor should supply just enough gas to run the car without forming carbon.

When the motor "spits back," the mixture is too lean.

When it runs irregularly and emits black smoke, the mixture is too rich.

Don't try to make adjustments when the motor is cold.

Keep a careful record of your mileage and gasoline consumption.

A TIMELY REMINDER

The following sign is posted by the roadside as you enter a western town. It says:

4,076 people died last year of gas.

39 inhaled it.

37 put a lighted match to it.

And 4,000 stepped on it.—R. F. Hatch.

Profit by the experience of those who know.

Use McCLAREN CORD

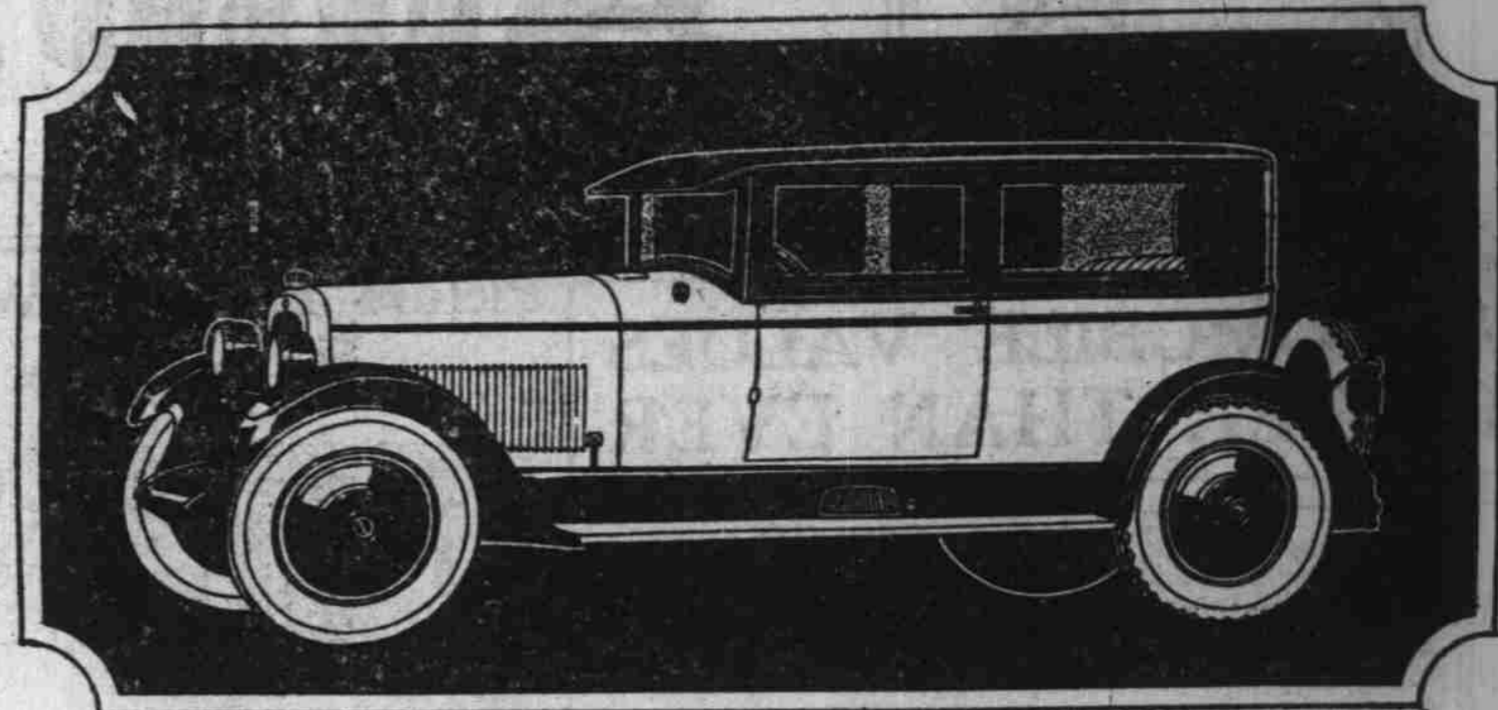


A Gripping Tread Design "Jim" "Bill" Smith & Watkins SNAPPY SERVICE PHONE 44

NASH

Nash Leads the World in Motor Car Value

NEW!



121-inch wheelbase—Five Passenger.

You Are Behind the Times Without 4-Wheel Brakes

THE ADVANCED SIX SEDAN—\$1485

f. o. b. Factory

N-E-W! Here's the newest Nash enclosed car conception—large and roomy, swung low on the 121-inch Advanced Six chassis and powered with the big Nash Six motor.

Q-U-A-L-I-T-Y! Here is quality of custom-built character; here is beauty of body design that captures your instant admiration.

V-A-L-U-E! And here is a price that buys you more sheer value than the industry has ever offered in this type of car. Doors are extra wide; the upholstery is of choice mohair.

S-P-A-R-K-L-I-N-G P-E-R-F-O-R-M-A-N-C-E! No word so aptly describes the supple smoothness of the Nash perfected valve-in-head Advanced Six motor. At 60 flashing miles per hour or at idling

pace its power-flow is amazingly quiet and vibrationless.

E-A-S-Y S-T-E-E-R-I-N-G! Nash has designed a remarkably efficient steering mechanism for use with balloon tires and four-wheel brakes. There is absolutely no strain or exertion attendant to parking or turning quickly.

B-R-A-K-I-N-G C-O-N-T-R-O-L! The Nash-type mechanical four-wheel brakes are unequaled for safety, simplicity, and efficiency of operation. They are fully equalized on all four wheels, immune to heat and cold, and have fewer points requiring lubrication than any other mechanical system. Full balloon tires, five disc wheels, and four-wheel brakes are included in the price, \$1485, f. o. b. factory.

See this car now at

KIRKWOOD MOTOR COMPANY

246 State.

Phone 311

Watch for the announcement of opening in our new location

DODGE BROTHERS COMMERCIAL CAR

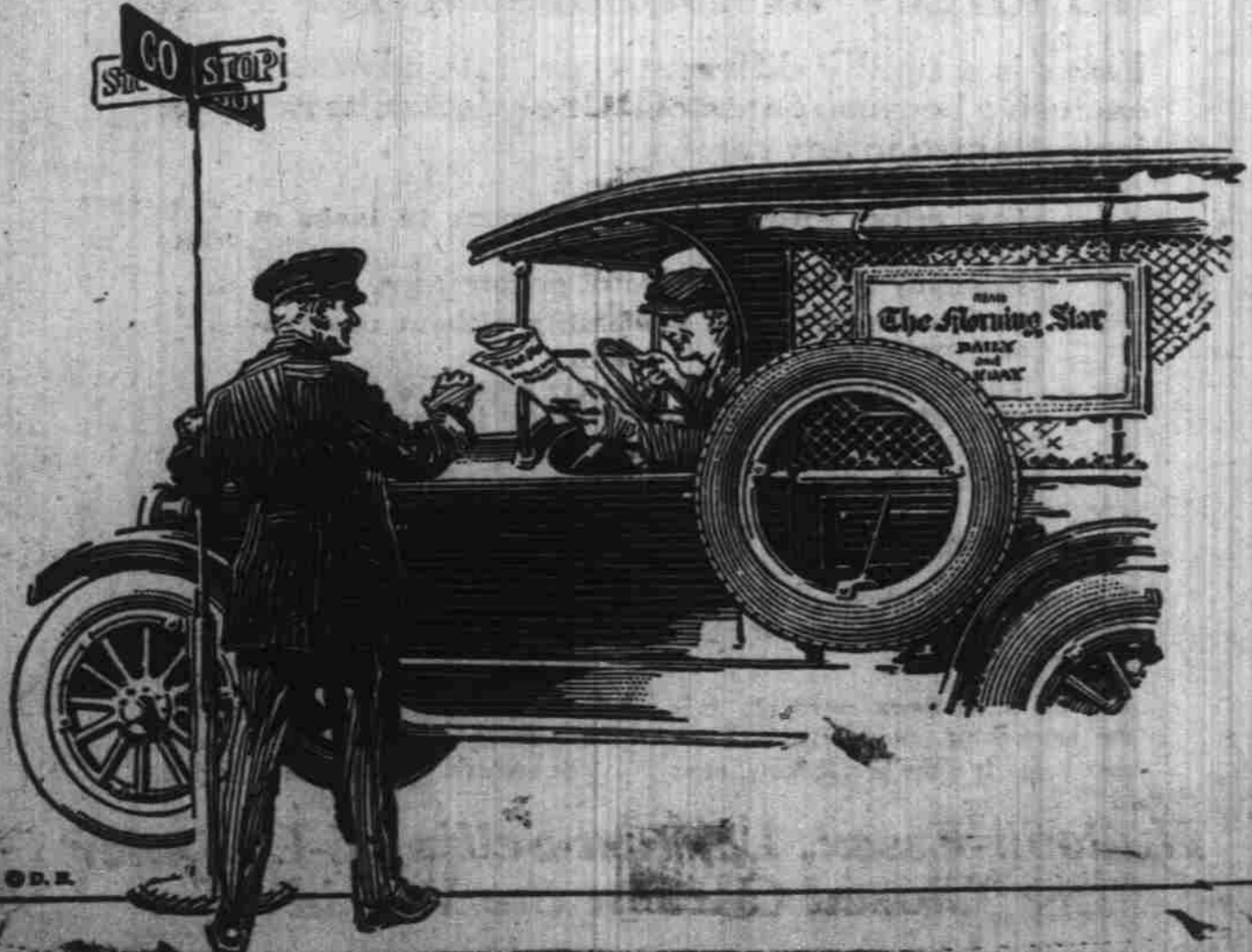
Its economy of maintenance could have no better proof than this:

It is operated in fleets by a long list of business houses whose selection of equipment is based strictly on comparative records.

Screen Commercial Car \$910, f. o. b. Detroit \$1055 delivered

BONESTEEL MOTOR CO.

474 South Commercial



ADVICE GIVEN ON TESTS FOR NOISE

Radio Sets Pick Up Many Man-Made Disturbances Classed as Static

Many of the noises heard in the loud speaker of a radio set are not due to any difficulty in the receiver but to electrical disturbances or "man-made" static coming from sources outside of the receiver.

A good test of these disturbances is to disconnect the antenna entirely from the receiver. If the noises diminish in intensity or disappear entirely, one may be sure that their source is external to the receiver.

"Man-made" static may originate in power transmission circuits, lightning arresters, transformers, transmission line insulators, motors and generators, arc lights, telephone and telegraph lines, sparking street car trolleys, electrical railroad equipment, door bells, electric light switching systems, vacuum cleaners, electric washing machines and other household machines, storage battery chargers, electric elevators, etc.

There is no universal panacea for "man-made" static. If one has a power line running along outside their house which is causing extreme disturbance, the only remedy is to get the power company to run down the trouble and eliminate it, which they are many times glad to do.

The possibilities of changing the position of the receiver; changing the antenna length and its direction by use of a loop or a very short indoor antenna, and putting condensers in series with the antenna and ground system is about all the ordinary listener-in can do to reduce these disturbances.

Often the simple expedient of changing the position of the antenna may do very much to eliminate such disturbing noises.

As a man grows wiser, he gradually drops the words "I," "me," and "mine."

Large Increase in Dodge Brothers Sales

Dodge Brothers remarkable increase in production and sales continues without interruption, an official statement from the factory discloses.

Actual retail deliveries by dealers during February were within a few cars of 15,000, which is an increase of 23.1 per cent over deliveries in February, 1924.

Every week in February showed a material increase over the preceding week and the first week of March likewise exceeded the last week of February.

While dealers' stocks are exceptionally low, the factory is turning out cars in such volume that it is hoped to meet practically the entire current demand. Production for the first week of March was over 1000 cars a day.

Dodge Brothers sales for 1924 increased more than 25 per cent

over 1923, in the face of an 11 per cent decline in the industry as a whole. These facts, considered with the present continued increase, bespeak a most gratifying condition and Dodge Brothers are naturally optimistic.

RULES OF THE ROAD IN JAPAN

At the rise of the hand of a policeman stop rapidly. Do not pass him by or otherwise disrespect him.

Whenever a passenger of the foot have in sight tootle the horn trumpet to him melodiously at first. If he still obstacles your passage tootle him with vigor and express by word of mouth the warning, "Hi, Hi."

Beware of the wandering horse that he shall not take fright as you pass him. Do not explode the exhaust box at him. Go soothingly by, or stop by the roadside till he pass away.

Give big space to the festive

dog that make sport in the roadway. Avoid entanglement of dog with your wheelspokes.

Go soothingly on the grass-mud, as there lurk the skid demon. Press the brake of the foot as you roll around the corners and save the collapse and tieup.

BANG! My Bonnie bent over the gas tank. The height of its contents to see, She lighted a match to assist her—

CHORUS Oh, brink back my Bonnie to me.



GET THERE QUICKLY

Go where you want—when you want—on a bicycle. Whether for business errand or pleasure ride, the always-ready, smooth-riding

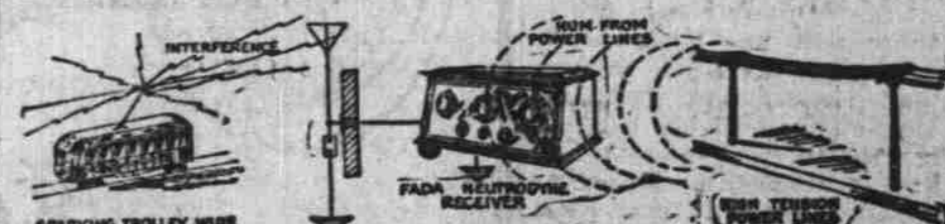
COLUMBIA BICYCLE

will get you there in hurry-up time.

See Them at Lloyd E. Ramsden

387 COURT STREET PHONE 1687

Everyday Radio BY KIMBALL HOUTON STARR



INTERFERENCE FROM POWER LINES

Many of the noises heard in the loud speaker of a radio set are not due to any difficulty in the receiver but to electrical disturbances or "man-made" static coming from sources outside of the receiver.

A good test of these disturbances is to disconnect the antenna entirely from the receiver. If the noises diminish in intensity or disappear entirely, one may be sure that their source is external to the receiver.

"Man-made" static may originate in power transmission circuits, lightning arresters, transformers, transmission line insulators, motors and generators, arc lights, telephone and telegraph lines, sparking street car trolleys, electrical railroad equipment, door bells, electric light switching systems, sewing machine motors, vacuum cleaners, electric washing machines and other household appliances; X-ray machines,

storage battery chargers, electric elevators, etc.

There is no universal panacea for "man-made" static. If one has a power line running along outside their house which is causing extreme disturbance, the only remedy is to get the power company to help run down the trouble and eliminate it, which they are many times glad to do.

The possibilities of changing the position of the receiver; changing the antenna length and its direction by use of a loop or a very short indoor antenna, and putting condensers in series with the antenna and ground system is about all the ordinary listener-in can do to reduce these disturbances.

Often the simple expedient of changing the position of the antenna may do very much to eliminate such disturbing noises.