

SEVENTY-FOURTH YEAR

SALEM, OREGON, SUNDAY MORNING, MARCH 8, 1925



# Auto News of the Daily

RADIO—BICYCLE—MOTORCYCLE—



## HUDSON AND ESSEX ACHIEVED VOLUME

Dealer Asserts That it Does  
Not Pay to Buy Car That  
May Be Orphan

"Look to the company behind the car you buy. Be sure it is permanent. Be sure that your investment will not be in an orphan car," advises Fred M. Powell distributor in the Salem territory for Hudson and Essex.

"It is actually a fact that many more motor cars have failed than have lived. A motor magazine recently called the roll alphabetically on the companies that have gone, and there was at least one company for every letter in the alphabet except Q and X. If only some hopeful manufacturers had turned out Quince and a Xerox the whole alphabet would have been complete in the graveyard of forgotten machines.

"You will find today many motorists with their good money tied up in 'orphan cars'—cars on which service is expensive and difficult to get, and cars which will have very little if any resale value whatever.

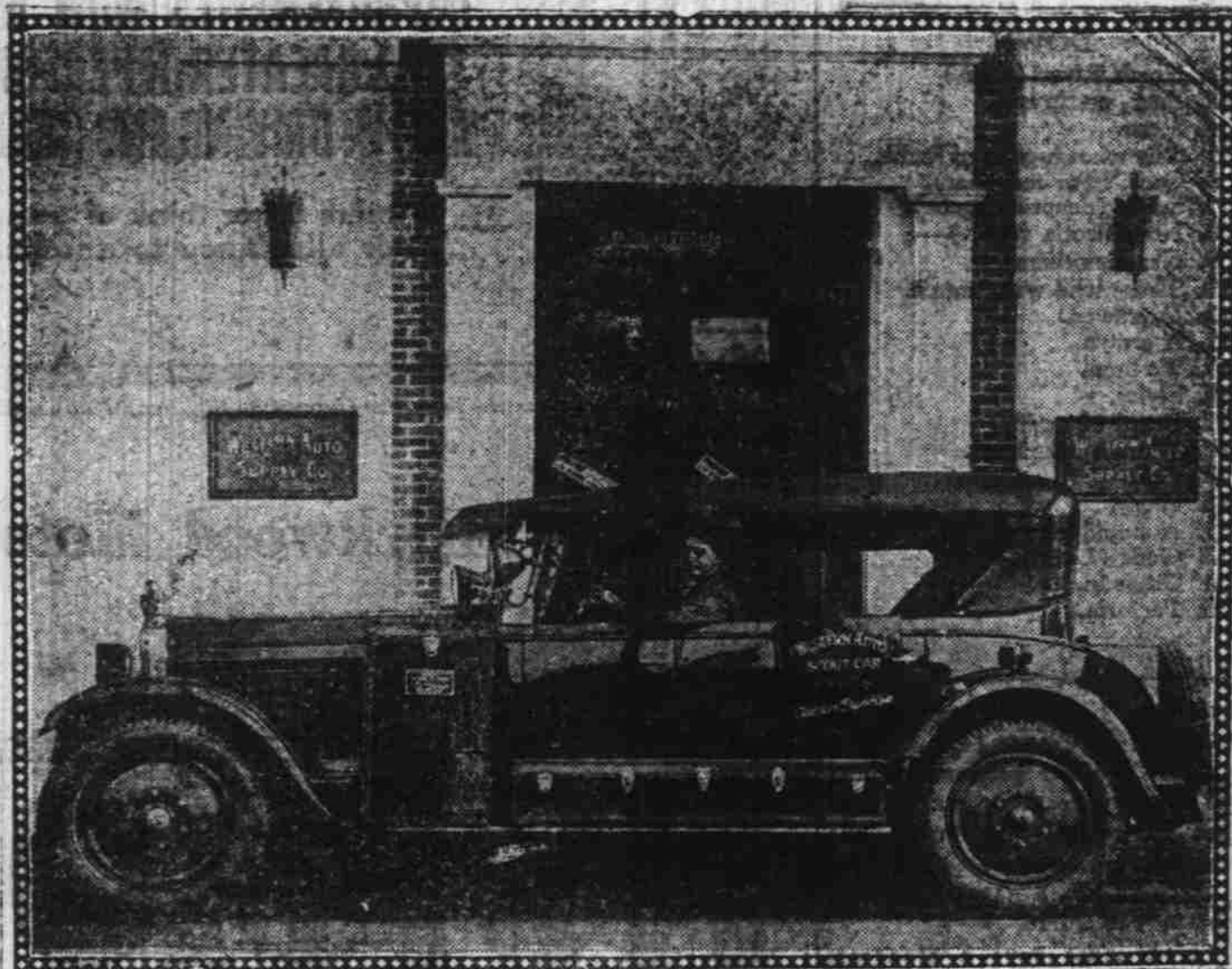
"A motor car buyer today is careless indeed if he ties up his money in any car which hasn't a successful company behind it. He is risking the loss of a considerable sum of money. The sensible thing is to see that the car itself is good, that the company is sound and most important that the company is progressive and abreast of the times. A company may have a historic look but if it isn't progressive—look out!

"On this basis, the wise buyer will find a new and added respect for Hudson and Essex cars. Not only is the concern well-seasoned, but it has been known as a leader in the industry. Its invention of the coach type of car, and its sponsorship of the coach all during the period when it had met opposition and even ridicule by makers who are now flocking to it, is one of the industry's greatest examples of leadership.

"It must be remembered to begin with that while Hudson-Essex conceived the coach idea, they were not merely content to let someone else develop the idea. They have already built and sold over 210,000 cars of the coach type. As a result they have a background of experience behind them in building this type of closed car that is not remotely approached by any other manufacturer. They have achieved a volume of production that no other closed-car builder ever attained before, and with the resultant economy of overhead and all manufacturing costs."

Nature adjusts things. Those who monkey with a mule's business end seldom have heads the mule can hurt.

## Famous Scout Will Cover Nine States



Outdoor Franklin, well known road scout and authority on fishing and camping, is here shown at the wheel of the Western Auto Scout car he will pilot this year in gathering interesting outdoor data.

## HARLEY-DAVIDSON SALES INCREASING

Harry W. Scott, "The Cycle Man," Reports Many Sales for the Week

Harry W. Scott, "The Cycle Man," reports many sales for the week.

Economical and dependable transportation are the main reasons for the large increase in the number of people becoming interested in motorcycles, states Mr. Scott.

Hundreds of people with moderate incomes are beginning to realize that their automobile transportation costs are running too high and are turning to the motorcycle for relief, besides having an opportunity to enjoy the greatest sport in the world—motorcycle riding.

Five sales have been reported from the local shop during the past week to the following owners, Walter Scheffe, Salem; Earl Flickinger, Albany; John Ojha, Salem; E. Stewart, Salem and Roy F. Dunn, Gervais.

Cole McFarland, motorcycle salesman, who for the past two years has been with the Hirsch Cycle Co. of Spokane, Wash., Harley-Davidson agency, has accepted

a position with Harry W. Scott, selling Harley-Davidson motorcycles. Mr. McFarland will arrive in Salem today.

## Hawaii Calls on Airplanes To Sanitize Sugar Fields

HONOLULU, Mar. 7.—Negotiations for the use of army airplanes to "bomb" the sugar cane fields of Hawaii with preventive dust in the fight against the eye-spot pest, are in progress between headquarters of the Hawaiian department of the army and the Hawaiian Sugar Planters' association, and it is expected that the initial experiment probably will be made within a few months.

The work will be along the same lines as the method used in Texas and other states where airplanes have been used in dusting cotton fields to combat the boll-weevil. The estimated annual loss to plantations on Oahu through the effects of the fungus causing the eye-spot disease is \$100,000.

## England Imports Oddities From All Parts of World

LONDON, Mar. 7.—Many queer cargoes arrive in the ports of Great Britain during the course of a year, but perhaps the queerest was one from Mexico during December. This consisted of 13 tons of dried flies for use in the manufacture of paint. Dried flies also come from Brazil, but these are utilized in the mixing of food for poultry and pheasants.

Manifests of cargoes carried in steamers often make strange reading to anyone but the initiated, and the average man, seeing that a case of walrus whiskers was carried in a steamer would hardly imagine they were to be utilized for toothpicks at fashionable hotels. Frog skins are shipped from India for bookbinding purposes; "Tasmanian devils" often arrive, and from South Africa recently came a case of "diseases." These included cultures of germs of blackwater fever, malarial fevers and other kinds of tropical diseases for the purpose of scientific investigation.

Snails and frogs come into London for use at Soho restaurants; and twice each year a vessel from China brings Chinese dried foods for the Chinese population of England. Sea slug, sharks fin, the nest of the seawallow, and other strange luxuries are also imported in fairly large quantities.

## TIRE SHOP WILL OPEN

Work is under way remodeling the corner formerly occupied by the Used Car Corner. Walter Zozel will open up for business here soon under the name of the Zozel Tire Shop. Improvements are being made and Walter expects to have a first class tire shop.

## Nome Epidemic Recalls Former Dog Team Expedition

ANCHORAGE, Alaska, Mar. 7.—Establishment of a speed record for a relay run of 650 miles by dog team from Nenana on the Alaska Railroad to Nome, on the Bering Sea, recalled to Dr. J. B. Beeson of this city a trip he made in 1921 to Iditarod, a former Alaskan gold camp, 600 miles. Antitoxin to fight a diphtheria epidemic was carried on each journey.

"One of the most marvelous bits of skill I ever saw was exhibited between Cripple and Iditarod, 120 miles apart," said Dr. Beeson. "One musher's team of half-wolves unbroken, ran away. For 25 miles they sped through timbered country while the driver clung to the handle bars of his sled, avoiding an upset by quickly shifting his weight from runner to runner."

"One of the greatest dangers to drivers of fast dog teams in low temperatures is to be thrown from the runners. A driver keeps on trying to balance from runner to runner until the cold makes him so much he cannot move. Then he may fall off and may be miles behind before an upset stops the team. It is very easy to freeze to death then."

## BERLIN SUICIDES DECREASE

BERLIN, Mar. 7.—Suicides in Berlin decreased last year to 36 for each 1,000 of population, as against 43.5 to 1,000 in 1923. Efforts are being made to get at the causes of suicide in an effort further to reduce the number.

## Stromberg Carburetors

FOR SMOOTH RUNNING MOTOR AND  
LONG GASOLINE MILEAGE

A Carburetor for Every Car

"Jim" "Bill"  
Smith & Watkins



You can get the  
BEST IN AUTO TOP  
AND UPHOLSTERY  
Work at the Most  
REASONABLE PRICES

If You Bring Your Work to

W. R. J. H.  
McALVIN  
515 NORTH CHURCH

## YMCA PROGRAM IS HEAVY IN MONTH

February Proves Busy Period  
for B. J. Kimber, County  
Secretary

BENJAMIN J. KIMBER  
The report of Marion county YMCA secretary discloses a large amount of detail work, which has been performed during the month of February. Lectures, conferences, banquets, chartings, hikes and addresses are some of the items listed to the work of the month. The report is as follows:

Boys clubs:—1 Friendly Indians; 1 scout troop; 6 Hi Y clubs; 7 Pioneer club; 56 club-meetings with 302 members in attendance.

Sponsors:—Two Father's clubs backing up boys of two towns; 55 Business men assigned to special clubs.

Conference:—One pioneer rally with parents; one leader's conference.

Banquets:—One Father and son banquet at which 36 fathers and sons were charted etc.; Three bean feeds. Hi Y. One Pioneer social.

Trips and Hikes:—One educational trip and one hike.

Chartings:—18 boys charted for assets and liabilities of character.

Volunteer Workers:—98 business men assisted definitely in the program.

Communities:—12 communities were visited and definitely assisted aside from club work, such as sermon, address, hikes, deputation etc.

Thrift:—Over 100 fellow up supplies given out on thrift to those who wrote essays during Thrift week.

Literature:—Over 400 pieces of religious literature given out.

Deputation:—Two deputations of 16 Willamette students visited two towns in two day deputation campaign. Six churches assisted and many young folk inspired to be more like the Master.

Addresses:—The secretary made 17 addresses to about 1000 young folk.

Religious services:—About 25 religious services were assisted in the major part of their program through the county YMCA.

## Makers of Airplane Flivvers Promise to Popularize Flying

LONDON, Mar. 7.—Another terror will shortly be added to the quiet-loving old ladies in the distant suburbs and rural England. This is a baby airplane fitted with a 60 horse-power engine which the makers claim can be stored in a garage at the bottom of a garden, has folding wings, contains a self-starter and can take off from a comparatively confined space.

The object of the makers is to bring flying within the reach of a larger number of the public and eventually make the airplane as popular as the motor car.

## Tito Schipa Visits Nash Motor Factory; Buys Four-door Coupe

Tito Schipa, idol of music lovers, accompanied by Mrs. Schipa, was at the Nash Motors factory last week to see for himself just how automobiles are made. Incidentally, the famous opera star and his wife are now members of the great family of Nash owners. Their inspection of the Nash plant, they described as "most interesting," both expressing wonder in the manifold operations necessary in the construction of a motor car.

"It is so large, so much machinery and everything in such harmony like an orchestra," said Mr. Schipa, as the party passed from the grinding room into the motor assembly department. "And it is, Oh, so neat and clean, not like what you would expect in a factory," added Mrs. Schipa, expressing the feminine viewpoint.

Mr. and Mrs. Schipa went to Kenosha expressly to visit the Nash plant. They were greeted by W. H. Alford, vice president of the Nash Motors company, and lost no time in getting out into "the works." It so happens that several weeks ago the Schipars rode with friends in a Nash Four-Door Coupe and were so favorably impressed with the car they placed an order with the factory for one of these models. The car has been shipped to them at the new home they are building at Daytona, Fla.

Mr. Schipa and his wife expressed regret that it was not possible in the limited time they had at

their disposal to visit every department in the Nash factory and the opera star said he would like to return to make the inspection in a more leisurely manner some day next summer while he is singing at Ravinia Park near Chicago.

## A PREVENTION

At some time or other a Packard engineer must have been caught out in a heavy rain with his car and had an experience common to many motorists, having the rain seep down through the hood hinge and short circuit the distributor putting the engine out of commission. Packard cars are equipped with a metal trough which extends along the length of the hood hinge and carries any water which might find its way through away from the distributor and all the ignition lines.

"What does backache suggest?" asks a medicine ad. Well, speaking off-hand, we should say gardening.



This week!  
—a Jumbo Tube  
Given with each  
WESTERN GIANT  
Balloon!  
—to fit your present rims.

Why not enjoy the comforts that come with the use of low inflation tires when you can get such a well-known brand tire as the Western Giant Balloon, with a Jumbo Tube included, at the prices quoted below?

In building this tire the greatest care has been exercised in processes of construction detail and the precision with which the various plies and layers are assembled—and these details are the real life of tires embodying the balloon principle. Satisfy yourself that Western Giant Balloons will give you the service you have a right to expect. Try them this week and let us present you with a Jumbo tube with each balloon purchased.

Size	Price
31x4.40 Cl. (To Replace 30x3 1/2 Cl.)	\$13.95
31x4.40 S.S. (To Replace 30x3 1/2 S.S.)	14.95
32x4.95 S.S. (To Replace 31x4 S.S.)	20.60
33x4.95 S.S. (To Replace 32x4 S.S.)	21.90
34x4.95 S.S. (To Replace 33x4 S.S.)	22.90
33x5.77 S.S. (To Replace 32x4 1/2 S.S.)	29.65
34x5.77 S.S. (To Replace 33x4 1/2 S.S.)	30.15
35x5.77 S.S. (To Replace 34x4 1/2 S.S.)	30.50
35x6.60 S.S. (To Replace 33x5 S.S.)	35.40

## Tire Covers

A neat, well-fitted tire cover gives your car a finished and distinctive appearance and it gives the tire full protection from sun and rain. You know an unprotected tire will deteriorate more quickly on the spare than when in use on the wheel. Prices \$1.50 to \$2.25, according to size.

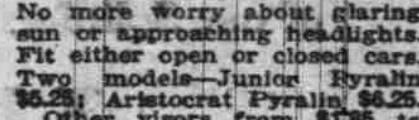


## Aermore Horns

Note the construction of the four brass tubes in the illustration. This well-known exhaust horn produces a soft, harmonious signal. Easy to install. Priced according to car, \$6.90 to \$14.00.

## Pyralin Visors

No more worry about glaring sun or approaching headlights. Fit either open or closed cars. Two models—Junior Pyralin \$6.25; Aristocrat Pyralin \$6.25. Other visors from \$7.00 to \$7.50.



## Wind Wings

A wind wing to meet your requirements at a price to suit your purse. "Comet" Wings—crystal plate glass, baked on black enamel brackets, \$4.85. Others from \$7.75 to \$19.50.



## Steering Wheel Covers

This high quality elastic rubber cover gives you a sure and easy grip on the wheel. It will not lose its shape and beautifies the wheel. 14-inch size and smaller, \$1.90; 17-inch size and larger, \$1.45.

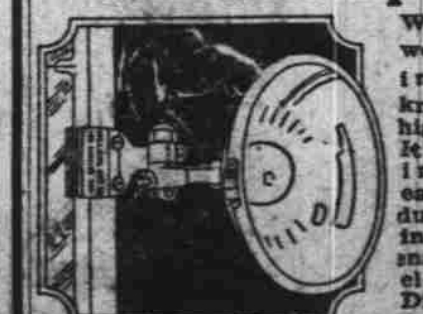


## Interior Mirrors

You get a full view of the entire width of the road in rear of your car without detracting from your line of vision. The mirror is adjustable to any angle. 85c to \$2.95, according to size and make.



## Extra Special Williams Spotlight



We have a very wonderful value in this well-known standard. It is very classy in appearance, easy to use and durable. Finished in baked-on black enamel, with nickel-plated fittings. Diameter of the reflector is about 6 inches. Our regular low price \$4.85. Very special at..... \$3.65

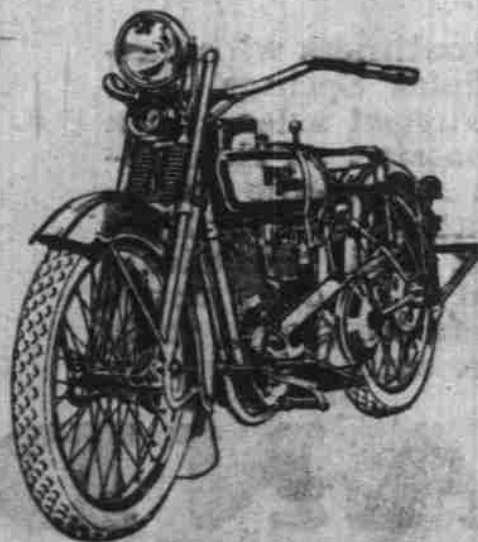
## Extra Special Anco Hot-Spot Manifold



Our regular low price is \$4.85. The Anco Hot-Spot cuts fuel costs, increases mileage, decreases carbon and gives greater power. Our extra special price is only..... \$2.60

More Than 100 Stores—All Over the West  
Order by Mail  
Our Guarantee Protects You  
**Western Auto Supply Co.**  
Salem Store Corner High and Court  
For Your Convenience Open Until 9 P. M. Saturday

## Special Sale Rebuilt Motorcycles



We now have the most complete stock of Rebuilt Harley-Davidson Motorcycles that has ever been on our floor—all models—all prices.

Everyone on Easy Terms

You can buy a Rebuilt Harley-Davidson for as low as  
**\$35.00 Cash—Balance \$15.00 Per Month**

Come in and look them over—pick out the one you want—a small deposit will hold it.

**Harry W. Scott**  
"The Cycle Man"

147 SOUTH COMMERCIAL STREET  
Write for descriptive list and catalogue. It's Free