

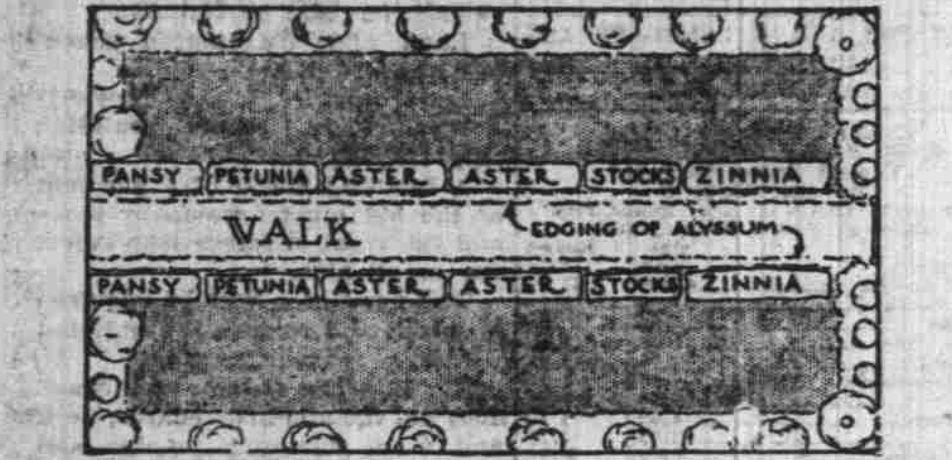
The Home Garden

What is Home Without a Garden?

NATIONAL GARDEN BUREAU
(Since the War Years, With Their Gardens, Gardening Has Not Slumped, But Has Steadily Increased)

PERMANENT VEGETABLES INCREASE WITH AGE
The perennial vegetables are those which are permanent fixtures and come up regular year after year, increasing in vigor and productiveness. The two principal ones are asparagus and rhubarb.

An asparagus bed is an investment for several generations. It pays to prepare the bed well and select the best available varieties to install in the bed.
Rhubarb is a delightful spring tonic vegetable for soups and pies. Only a few hills are needed



and any corner with a fair degree of sunshine will do for this plant. An attractive plan is to plant a row of rhubarb along a row of asparagus on the garden boundary as a decorative as well as an utilitarian feature of the garden.
The asparagus bed may well be used for early vegetables between the rows, such as lettuce, radishes, spinach and young onions, which do not make large enough root systems to interfere with the deep-rooting asparagus and are out of the way before asparagus cutting

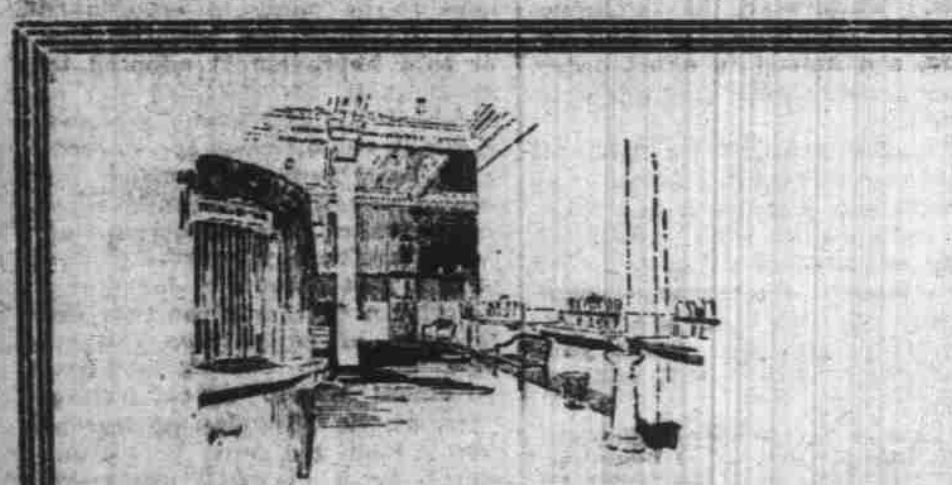
Diagnosing the Straight Walk

variety of annuals of different height and style of growth than to bed it solidly to one variety. Along the edges of the walk, colonies of low-growing plants will be found most valuable to spread out over the edges of the cement or brick. Sweet alyssum, portulacca, verbenas, dwarf nasturtiums, dwarf marigolds, Swan river daisies, ageratum and others offer fine material for this purpose. In planting opposing borders or parallel beds with edging plants the same plant colonies should be planted opposite each other or approximately opposite. The effect will be greatly improved by bearing this fact in mind.
Often edgings are planned for beds along a walk, one kind of plant on one side and another on the opposite. The plan seems alluring when contemplated, but it does not work out satisfactorily. The same plant or series of plants should be used to balance each other on both sides. The same principle holds true of the taller-growing plants. They need not be exactly opposite to secure the effect, but nearly enough so to maintain balance.

Back yards, unfortunately, seldom are laid out with an eye to their ornamental possibilities, and the planting problem often is made difficult by a walk of brick or cement exactly dividing the space in half, making it a puzzle to adapt it to any garden plan. But with a walk a fixture, it must be taken as it lies, and such a situation may be ameliorated into a scene of beauty by planting a border on each side of the walk, varying the plants in height, and planting annuals of trailing habit to droop and trail over the hard edges of the walk, blurring its uncompromising outlines.
With a border on each side of the walk and a boundary planting of shrubs, annuals and perennials, a grass panel is left on either side of the walk, which may be left free or may have a small ornamental tree or shrub placed either in the center or at each end, the trees or shrubs matching in each panel.
For the border along the walk a space at least four feet wide will give a good effect. It is usually better to plant it to a

Plant for Continuous Bloom

The ideal flower garden is one continuous sheet of bloom from May until frost, but this is an ideal difficult to obtain. However, with a careful selection of annuals and early planting, a continuous sheet of bloom increasing in brilliancy may be secured without great difficulty from mid-June until frost.
Several of the most brilliant annuals have short and early or short and late seasons of bloom, the poppies being an example of the former and the asters of the latter. Of all-season standbys,



How you can receive the most Benefits From Your Bank

The United States National cannot serve its depositors with its maximum power if they do not let us know of their needs. We perhaps might hear of them in a round about way and then we are glad to seek them out and help them.
But for immediate assistance and for dispatch in your financial development keep in touch with us. Let us know your problems of business and the farm. Then we are in a position to apply our services to your requirements as they arise.

The United States National Bank
Salem, Oregon

Mammoth WINTER SPINACH

One of the Best Vitamine Producing Foods
Plant spinach, eat spinach and you'll save many a doctor's bill. Doctors and dietitians everywhere recommend this vegetable for its health-giving vitamins and iron. This new giant developed by us for the market gardener is made to grow for spring, summer and fall cutting. It is slow to run to seed. Its leaves are extra large, very heavy, smooth, brittle, dark green in color and a most valuable and nutritious food. Pat. 192; U. S. 1,827; 1/2 lb. 25c; 1 lb. 45c. By E. F. 10 lbs. @ \$4.00; 25 lbs. @ \$9.00.

Send \$1 For This Northwest Garden Collection. Regular Val. \$1.55. One Packet Each of the Following: Beana, Burpee's Stringless; Beana, Gill's Delicious Giant; Beet, Extra Early Egyptian Special; Sweet Corn, Gill's Improved Golden Bantam; Carrot, Table Gem; Cucumber, Davis Perfect; Lettuce, New York; Parsnips, Tender Heart; Mushrooms, Cream; Peas, Quite Content (late); Peas, World's Record; Spinach, Mammoth Winter; Radish, Early Scarlet Turnip White Tipped; Turnip, Orange Jelly.



GILL BROS. SEED CO.
PORTLAND, OREGON, DEPT. 91

tinuing to branch and produce more flowers. The verbenas send out runners and thus multiply its blooming surface. The petunias branch and spread out, producing scores of bloom, fragrant particularly at nightfall. The stocks are compact growers, throwing up a continual succession of bloom spikes.
The zinnias, coming into their full glory a little later than these annuals, make up in speed and brilliancy of colors for delay in developing, as the clossal types makes big bushes by fall. They may be counted on for a magnificent display from mid-July on.
By sowing annual poppies even before frost is out of the ground, the display of annuals will begin in May, and the poppies may be pulled as they begin to flag and other annuals transplanted into their places.
Sweet alyssum as an edging-plant comes into bloom early and is one of the last to yield to frost.
There is still time to draw garden plans for both flower and vegetable garden. You will need them both.

The new Washington rust-proof asparagus is worth tabbing if you intend to set out a new bed or make over the old one and put in some new plants. It is really rust-proof and first-class, big-stalked, tender "grass."
Little Marvel is proving one of the most generally satisfactory all-around peas for the average home garden. Try some of the newer giant-podded semi-dwarf types for big pods and first-class quality.

If your cauliflower didn't pan out as an early summer crop, try fall planting. Sometimes it does not do well early in the season.
Kohi rabi is an early season vegetable when at its best, or a late fall one. Put in some seed early.
Spade in the mulch of autumn leaves this spring. They will help to supply the lack of stable manure and give the garden a good supply of humus. If they are too dry to spade in, stack them up for a compost heap.

DRINK WATER IF KIDNEYS BOTHER

Take a Tablespoonful of Salts if Back Pains or Bladder is Irritated
Flush your kidneys by drinking a quart of water each day, also take salts occasionally, says a noted authority, who tells us that too much rich food forms acids which almost paralyze the kidneys in their efforts to expel it from the blood. They become sluggish and weaken; then you may suffer with a dull misery in the kidney region, sharp pains in the back or sick headache, dizziness, your stomach sour, tongue is coated, and when the weather is had you have rheumatic twinges. The urine gets cloudy, full of sediment, the channels often get sore and irritated, obliging you to seek relief two or three times during the night.
To help neutralize these irritating acids; to help cleanse the kidneys and flush out the body's urinous waste, get four ounces of Jad Salts from any pharmacy here. Take a tablespoonful in a glass of water before breakfast for a few days, and your kidneys may then act fine. This famous salt is made from the acid of grapes and lemon juice, combined with lithia, and has been used for years to help flush and stimulate sluggish kidneys; also to neutralize the acids in the system so they no longer irritate, thus often relieving bladder weakness.
Jad Salts is inexpensive; can not injure and makes a delightful effervescent lithia-water drink. By all means have your physician examine your kidneys at least twice a year.—Adv.

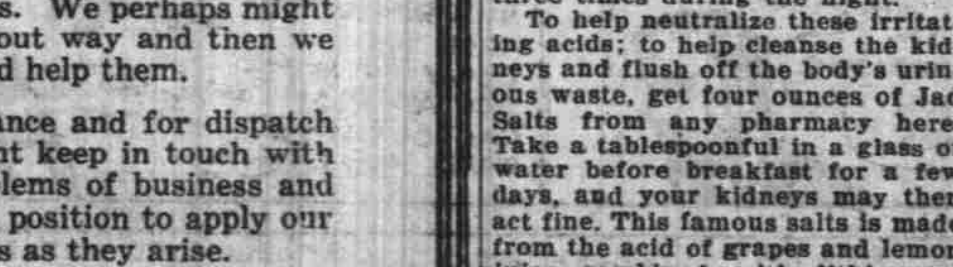
MY MARRIAGE PROBLEMS

Adele Garrison's New Phase of REVELATIONS OF A WIFE
Copyright by Newspaper Feature Service
CHAPTER 402.

PERPLEXING SCENE MADGE WITNESSED BETWEEN DR. PETTIT AND MRS. BARKER.
At Harry Underwood's ridiculous query concerning the treatment I wished given Dr. Pettit, I permitted myself the relaxation of a laugh for the first time since I had received Lillian's telegram. The contrast between the dignified mien of the grandee who was impersonating and his roach, slangy question was irresistible.
My merriment was almost instantly checked, however, by the realization that if it possibly could be avoided I must not permit a clash between the physician and Harry Underwood.
In the first place I did not wish to have Mrs. Barker perceive that I knew the apparently foreign stranger who had claimed the hospitality of her hostelry for the preceding night.
A Delicate Situation.
And in the second place, sober reflection told me that I must not permit Dr. Pettit to be humiliated, as he would be if the two men clashed, and Harry Underwood worked some freakish prank upon him. While richly deserving anything that might happen to him, the physician was still an old and tried friend of my father's, and the family practitioner. Any retribution which came upon him must not have its channel through me or anyone associated with me.
Mrs. Barker was a different proposition, however. There was a grim humor about that lady as well as a most efficient air which convinced me that she would stand no nonsense from anyone in the world. I turned to Mr. Underwood with the air of sharing a confidence.
"You haven't listed the half of the things I'd like to have done to him," I said. "But, unfortunately, he's father's friend and the family physician, so I don't want to have him more angry at me than he has to be. And, you know—"
"That having me tickle him for you would make him more red-headed than anything else?" he countered with a quizzical smile. "Don't be nonsensical." I retorted, angry at his reference to the cause of the old feud between the men.
"I'm not—only truthful," he said, but I ignored him and went on with a rush:
"So if you'll please stay out here while I go in and see what Mrs. Barker is doing with him—"
"The lady looks capable of turning him over her knee and giving him the spanking he needs," he observed. "But let me tell you something—I'm not going out of earshot or sprinting distance. Little Herbie is a dangerous ch-act-er this morning, or I'm no judge. "I know he is here."
"I don't want you to go away," I said. "But I don't want anyone to learn your identity if it can be helped. I suppose even now somebody in the windows above is watching us and wondering at this conversation."
"Not a chance, old dear, he returned, with a grandiloquent lit- tle gesture. "If you'll notice I've kept inside the skin of the character, bared head and all. And if you need me don't sing out my name. Just yell on general principles! I'll be right there. I am honored, madame."
He bent low as I left him, and I heard a window softly open above me as I went up the steps, and I knew that some one was giving his striking-looking figure a close scrutiny.
Dr. Pettit was gesticulating violently in front of Mrs. Barker's

The Cost of Service

ON the loyalty and skill of the humane element depends the character of telephone service. The providers of this service must not only meet the market prices for materials. They must also maintain at any cost a high standard of workmanship.
Because of advancing prices, the telephone dollar goes only half as far as it did ten years ago. More than three-fifths of this dollar is necessarily expended for wages. Less would neither attract nor hold the high-grade workers essential to maintain America's standards.
That Bell telephone rates have advanced much less than other prices is largely due to economies in methods and apparatus that have been developed and introduced. It is also because the proportion of operating plant built at pre-war prices is still large, though this is steadily decreasing because of new construction made necessary by the nation's telephone needs.



The Pacific Telephone and Telegraph Company
BELL SYSTEM
One Policy - One System - Universal Service

D. M. CROUSE WAS GOOD, USEFUL MAN

Lived a Long and Exemplary Life, and Will Be Sadly Missed By Many
Daniel Monroe Crouse was born at Shellburg, Penn., June 16, 1846. He died at Vancouver, Wash., Feb. 24, 1925.

During the first year of his life his parents moved to Swansville, Penn., where Mr. Crouse grew to manhood.
When he reached the age of 21, he went into business for himself at Waterloo, Iowa, returning in 1872 to Pennsylvania to marry Miss Mary Jane Hay.
In 1874 Mr. and Mrs. Crouse associated themselves with the Iowa reform school for boys, Mrs. Crouse died while at this institution. During Mr. Crouse's eighteen years of service there, he served as instructor, assistant superintendent and superintendent.
He resigned in the summer of 1892, in the fall of that year marrying Martha Louise Anthony of Sterling, Illinois. Mr. and Mrs. Crouse spent two years in Lincoln, Nebraska, coming to Salem in the spring of 1894.
They lived for a time on their fruit ranch at Liberty, but for several years had occupied their home at 1209 Court street, corner 13th, in Salem.
Mr. Crouse was one of the directors of the Willamette Valley Prune association. He was a Mason, Knight Templar, Shriner, and member of the Presbyterian church.
He is survived by his wife, Mrs. Martha Louise Crouse, and his daughter, Mrs. T. J. Redrick of Vancouver, Washington.
The funeral was held in the First Presbyterian church on Friday, Feb. 27th. It was a Masonic funeral. Rev. Ward Willis Long, pastor of that church, had general charge of the services. The interment was in City View Cemetery, overlooking Salem.
Thus briefly is sketched the life and activities of a good man; one who was noble in all his walks; and one who bore his part in the burdens of life to the best of his ability. He will be missed in a loving family circle and by many close friends.
Mrs. Crouse is for the present at the Redrick home in Vancouver, Washington.

For BILIOUSNESS

Use BEECHAM'S PILLS for the relief of Constipation, Biliousness, Sick Headache and for moving the Bowels. Helps clear the skin. Contains no Calomel. Buy from your druggist. See and try the box.

National Oregon Products Month!

HUNDREDS of thousands of dollars are being spent this month to tell people in every corner of the United States about Oregon's possibilities and Oregon's quality products. You will see these advertisements in the magazines.
What you can do!
Here at home we can tie up with this national advertising on Oregon.
Merchants can feature displays of Oregon products; one or more numbers in programs
can be devoted to them; "Oregon Products" dinners or lunches may be served; school children may write essays, or make up lists of all the things made here. You'll be surprised at their variety.
Insist upon Oregon-made products when you buy. Choose them on merit; they successfully compete with the world's best. Your support of Oregon industries means more work; more wage earners; bigger payrolls; increased prosperity for everyone.

IT'S SECOND NATURE WITH US

To Make Clothes That Satisfy
HAND TAILORED For You
From the latest Spring Woolens
The largest stock in Salem

Ask any man whose clothes are gracefully becoming. You'll favor us — and yourself by investigating our values.
D. H. MOSHER
Tailor to Men and Women
474 Court Street. Phone 360

D. M. CROUSE WAS GOOD, USEFUL MAN

Lived a Long and Exemplary Life, and Will Be Sadly Missed By Many
Daniel Monroe Crouse was born at Shellburg, Penn., June 16, 1846. He died at Vancouver, Wash., Feb. 24, 1925.

During the first year of his life his parents moved to Swansville, Penn., where Mr. Crouse grew to manhood.
When he reached the age of 21, he went into business for himself at Waterloo, Iowa, returning in 1872 to Pennsylvania to marry Miss Mary Jane Hay.
In 1874 Mr. and Mrs. Crouse associated themselves with the Iowa reform school for boys, Mrs. Crouse died while at this institution. During Mr. Crouse's eighteen years of service there, he served as instructor, assistant superintendent and superintendent.
He resigned in the summer of 1892, in the fall of that year marrying Martha Louise Anthony of Sterling, Illinois. Mr. and Mrs. Crouse spent two years in Lincoln, Nebraska, coming to Salem in the spring of 1894.
They lived for a time on their fruit ranch at Liberty, but for several years had occupied their home at 1209 Court street, corner 13th, in Salem.
Mr. Crouse was one of the directors of the Willamette Valley Prune association. He was a Mason, Knight Templar, Shriner, and member of the Presbyterian church.
He is survived by his wife, Mrs. Martha Louise Crouse, and his daughter, Mrs. T. J. Redrick of Vancouver, Washington.
The funeral was held in the First Presbyterian church on Friday, Feb. 27th. It was a Masonic funeral. Rev. Ward Willis Long, pastor of that church, had general charge of the services. The interment was in City View Cemetery, overlooking Salem.
Thus briefly is sketched the life and activities of a good man; one who was noble in all his walks; and one who bore his part in the burdens of life to the best of his ability. He will be missed in a loving family circle and by many close friends.
Mrs. Crouse is for the present at the Redrick home in Vancouver, Washington.

For BILIOUSNESS

Use BEECHAM'S PILLS for the relief of Constipation, Biliousness, Sick Headache and for moving the Bowels. Helps clear the skin. Contains no Calomel. Buy from your druggist. See and try the box.

National Oregon Products Month!

HUNDREDS of thousands of dollars are being spent this month to tell people in every corner of the United States about Oregon's possibilities and Oregon's quality products. You will see these advertisements in the magazines.
What you can do!
Here at home we can tie up with this national advertising on Oregon.
Merchants can feature displays of Oregon products; one or more numbers in programs
can be devoted to them; "Oregon Products" dinners or lunches may be served; school children may write essays, or make up lists of all the things made here. You'll be surprised at their variety.
Insist upon Oregon-made products when you buy. Choose them on merit; they successfully compete with the world's best. Your support of Oregon industries means more work; more wage earners; bigger payrolls; increased prosperity for everyone.

IT'S SECOND NATURE WITH US

To Make Clothes That Satisfy
HAND TAILORED For You
From the latest Spring Woolens
The largest stock in Salem

Ask any man whose clothes are gracefully becoming. You'll favor us — and yourself by investigating our values.
D. H. MOSHER
Tailor to Men and Women
474 Court Street. Phone 360