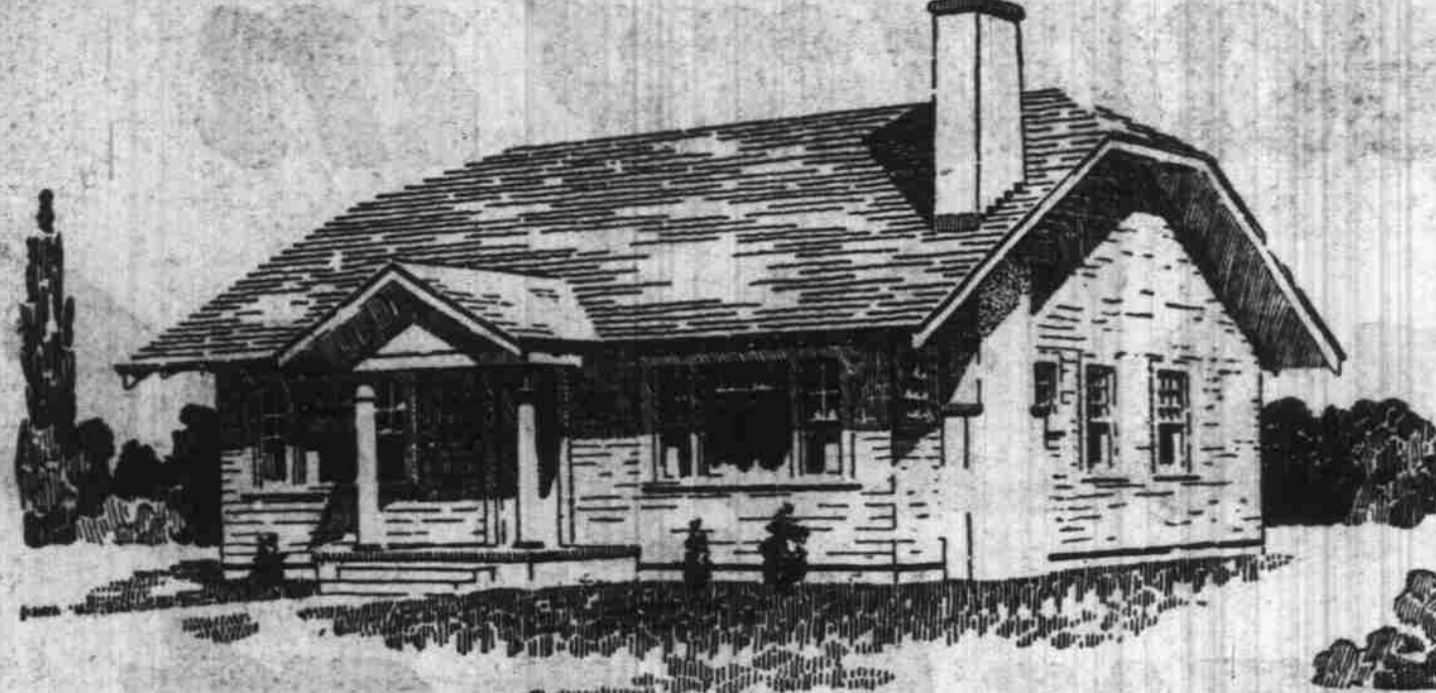


YOUR HOME

FIVE ROOM FLOOR PLAN WINS FAVOR



BUILDING FOR THE FUTURE; CONCRETE

Long List of Concrete Products Made in Salem, By Oregon Gravel Co.

Contractors and builders the world over are today realizing the necessity, as never before, of building for the future. Years of service must be added to the first great strength. With this thought in view the Oregon Gravel company, of Salem, has built up a large manufacturing plant for the manufacture of Milestone concrete products. The company manufactures burial vaults, shoppe brick, hollow tile, drain tile, sewer pipe, septic tanks, gravel sand, and crushed rock, besides doing a big business in cement, plaster, lime, fireplace accessories, fire brick, steel reinforcing, metal lath, Murphy In-A-Dor Beds, concrete water proofing, mortar colors, and celotax.

A Wonderful Growth.
The growth in the popularity of concrete products for building purposes is shown by the phenomena growth in its use all over the country. In 1920, 50,000,000 units of concrete tile were used for building purposes, and in 1924, just four years later, 462,000,000 units were used, making an increase in the use of this product of almost 1000 per cent in the last four years. This growth can be due to only one thing, and that, that the public has come to realize the necessity of using a building material that is fire proof, and at the same time will give years of faultless service. It is interesting to note that when it was decided to build a permanent memorial to the writer of that widely sung song, Home Sweet Home, in Washington, the material used in the buildings construction was concrete tile.

Is Up to Date
Some of the physical properties of Milestone hollow tile building blocks are: Crushing strength, 1000 pounds per square inch on gross area; absorption approximately 10 per cent by weight. Hollow tile blocks, as manufactured by the Oregon Gravel company, are made on the Duntile machines. This tile has a round hole running through the center of it for insulating purposes, and because of this round hole resists force equally in all directions. This is a distinct improvement over the square hole tile which resists strength from the top all right, but is weak on side strength.

Concrete Brick Superior
The concrete brick as manufactured by the company has many advantages over the ordinary clay baked brick. Chief among these is a porconsness not obtainable in ordinary brick. Various kinds of brick are manufactured including, mantel brick, for use in facing mantels; shiners, which are used in making special corner work, where the flat face of the brick is exposed; double header bricks, which are faced on two ends and used where the brick must be cut in two and both ends exposed, yard stock brick, which is used for facing the outside of buildings, chimneys, and porches. This brick is handled in white, cream, buff, or red colors, and in the wire-cut or stipple finish; and common brick, which is used for ordinary brick purposes, offering a brick of great strength and low absorption.

Lightest, Best Tile
Roof tile is used for roofing all buildings where a fire proof, water proof, and permanent roof is desired. A patented interlocking feature makes the tile roof water proof. The tile is very strong and durable, being made out of one part cement to two and a half parts sand. This roof tile is sold under the name of Watersal concrete roof tile. It is the lightest roof tile on the market, weighing only 750 pounds per square of 120 tile.

Stronger, Better Products
Milestone concrete products are all cured in a steam curing room. Steam pipes are laid in troughs of water, and when the steam is turned on it escapes from the pipe through little holes in the pipe, and makes its way through the water surrounding the pipe, into the room. This method of curing is much more rapid than ordinary air curing, and results in a stronger and better concrete product.

The Oregon Gravel company manufacturers the best concrete products that experience can develop, and invites any prospective builder to call for assistance in solving his building problems.

JAPAN TO REDUCE ARMY
TOKIO, Feb. 7.—Four divisions comprising 40,000 men of the Japanese army will be dismissed by May 1 in accordance with the general retrenchment plan of the government. The divisions abolished have been selected largely with a view to the economic result in the regions where they are stationed.

Sweden Warns Against Breaking American Laws
STOCKHOLM, Feb. 15.—The lure of the Golden West is as strong as ever in Sweden, and the application for visas received at the United States consulates have practically exhausted the quotas for the remainder of the immigration year. In view of this situation the Swedish authorities, as well as the Swedish-American line, are making effort to prevent Swedes from yielding to the temptation of entering the United States illegally. Thus the government social board has published in its latest bulletin a warning against attempts to slip over the Canadian frontier by persons who have been legally transported to the Dominion.

Tourists
WASHINGTON, Feb. 5.—In tracing out the reasons why unlight has power to destroy germ life, a fact long known and put to use by every housewife who has "aired out" things, the Bureau of Standards and the Public Health Service have produced positive results. A public document now in course of publication, by W. W. Coblenz and H. R. Fulton, research men assigned to the work, recounts findings in the field which will be of special value to

SALEM PUBLIC LIKES WILLIAM HART BEST

(Continued from page 1)
ful engagement. On the other hand, a very moderate priced film may do an extraordinary business if conditions happen to break most favorably at the time of its showing. As a matter of fact the Oregon theater holds an attendance record for a single day on a very moderate priced film show five years ago. That film was "The Lone Star Ranger," featuring William Farnum. Three years later a very splendid attendance was given to a showing of "Robin Hood," yet the showing of "Robin Hood" met with a financial loss for the simple reason that the film rental was exactly sixty times that paid for "The Lone Star Ranger." If one has good nerves and enjoys the fascination of uncertainty there is an undoubted appeal in the operation of a theater.

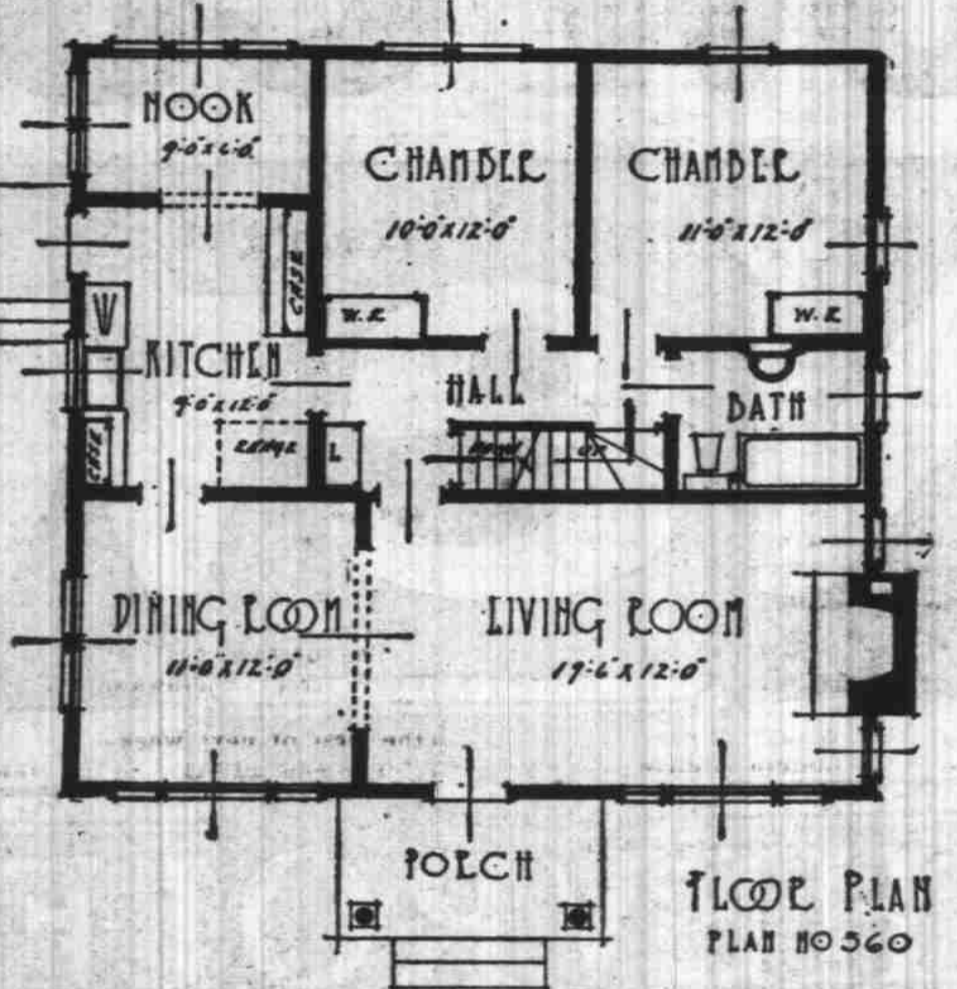
An inquiry directed to the standard of motion pictures was answered by Mr. Guthrie to this effect: "There can be no doubt that the standard of motion pictures has been steadily raised year by year, although there is still room for great improvement on the average. This improvement could be greatly hastened, however, if the public were willing to accept more favorably many of the higher type of pictures. Such pictures as Maeterlinck's "Blue Bird," which proved to be a dismal failure a few years ago, are a credit to the industry and should be encouraged. Within the past few weeks the Oregon theater has shown "Barbara Frietche," "Captain Blood," and "The Clean Heart." All of these were high class pictures though different in theme. All showed to a very unsatisfactory business. When the costs of the film are considered each took a loss. The day of better pictures will be greatly hastened when the public will demonstrate through box office attendance that such pictures are really desired, and the producers would furnish them just as quickly as any other type of picture if such were the case."

Sweden Warns Against Breaking American Laws
STOCKHOLM, Feb. 15.—The lure of the Golden West is as strong as ever in Sweden, and the application for visas received at the United States consulates have practically exhausted the quotas for the remainder of the immigration year. In view of this situation the Swedish authorities, as well as the Swedish-American line, are making effort to prevent Swedes from yielding to the temptation of entering the United States illegally. Thus the government social board has published in its latest bulletin a warning against attempts to slip over the Canadian frontier by persons who have been legally transported to the Dominion.

Tourists
WASHINGTON, Feb. 5.—In tracing out the reasons why unlight has power to destroy germ life, a fact long known and put to use by every housewife who has "aired out" things, the Bureau of Standards and the Public Health Service have produced positive results. A public document now in course of publication, by W. W. Coblenz and H. R. Fulton, research men assigned to the work, recounts findings in the field which will be of special value to

Socialists Total Seven Millions
BERLIN, Feb. 7.—The Berlin social democratic organ, Vorwarts, estimates that the strength of organized Socialist throughout the world in 1924 was 7,000,000, with 566,100.

England heads the list with 3,156,000 members of the Labor party. Germany comes second with 860,000 and Austria third with 566,100.



ECONOMY as well as beauty of design ruled in planning this five room bungalow. The plastered archway between the living and dining room serves a double purpose of emphasizing spaciousness and enhancing available heating and lighting facilities.

The kitchen is so arranged as to save steps for the busy housewife. The adjoining breakfast nook is of generous size and will serve admirably for an average family.

The central hall, with openings to the two bedrooms, bath and stairway is a convenience which any housewife will appreciate. The bedrooms are equipped with wardrobes, which occupy less space than the average closet.

Floor area of the house totals 1024 square feet. Two sets of blue prints and specifications will be provided.

YOU CAN GET THE ABOVE PLAN AT THE
SPAULDING LOGGING CO.
Front & Ferry Sts. Phone 1830.

Bricklayer Productivity Sets Record; Average Craftsmen Lay 1364 Per Day

Southern Cities Show Highest Figures With Indianapolis at Foot of List; Average Costs \$4.82 Per Thousand

Not only is brick production at its highest level in America, but bricklayer productivity also is at a new record. The United States department of labor finds that the average number of brick laid per day by the craftsmen in typical cities is 1364. This is the largest production attained since the introduction of modern architectural requirements in brickwork.

The consumption of common brick in the United States in 1924 will set up a new record, it appears from advance reports now available. What is equally interesting and important, is that the new year promises to convert this record into a normal volume of consumption for the venerable building material. The volume of production rarely holds up to this late date in any year as it has in 1924, but the element of greatest promise to the brick industry is revealed through a government report.

The production of all the brickyards finds its outlet through the gateway of bricklayer productivity. That outlet, considerably narrowed by cost-plus contracts and other abnormal conditions during the war, seems now to have been fully opened and freer than ever. The bricklayer, probably not more or less than other skilled trades, dropped somewhat in efficiency during the high pressure of the war time and the years immediately following.

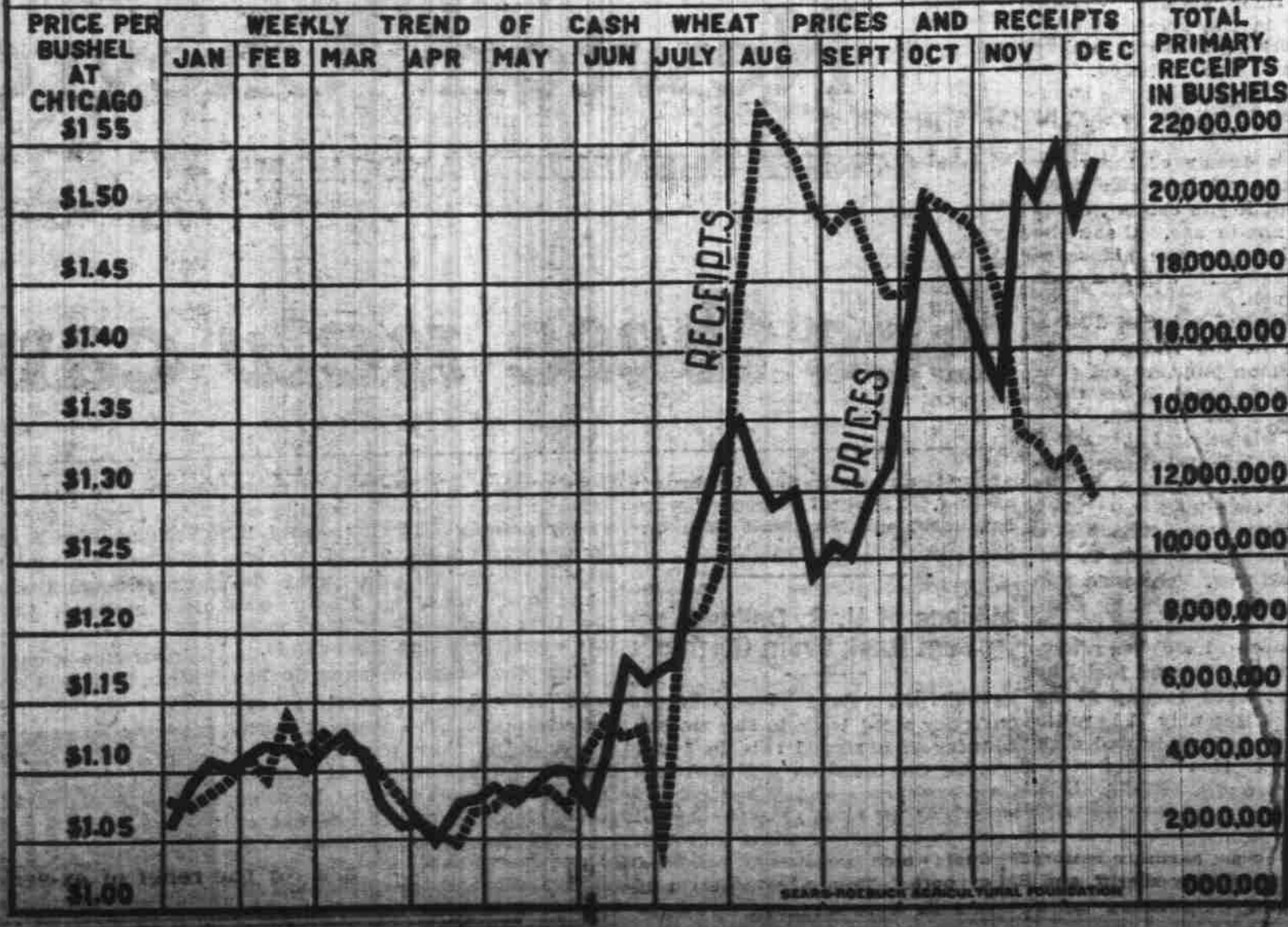
Ethelbert Stewart, commissioner of labor statistics of the United States department of labor, has just concluded a thorough investigation in typical cities of present-day bricklayer productivity. His findings show that the bricklayers of the country, generally, have reached an unusually high efficiency.

The department of labor's investigation in fifteen cities shows an average of 1364 brick laid per man per eight-hour day. In only three cities does the production fall below a thousand brick per

building, this evidence of reduced cost for the placing of the brick in the wall will work as a powerful stimulus to the brick industry. The cost of laying brick, as shown by the department of labor, runs as low as \$4.82 per thousand in Birmingham, and this amount plus the expense of material produces a permanent, fire-safe construction at a cost within the reach of every builder.

Below is given the list of cities investigated by the department of labor with the number of brick laid per eight-hour day in each: Atlanta, Ga. 1,482.4
Birmingham, Ala. 1,928.0
Chattanooga, Tenn. 1,808.8
New Orleans, La. 1,828.0
Norfolk, Va. 1,854.4
Cleveland, Ohio 1,182.4

HOW THE WHEAT MARKET BEHAVED IN 1924



Mr. Shrewd Business-Man:

Did you ever pay a bill twice? Not if you knew it! Let us show you how to stop paying for your home twice.

We are not lawyers, or "gold brick" artists, but just honest makers of concrete products and dealers in better building materials.

Say when.
OREGON GRAVEL CO.
Hood at Front St.

The Story the Coal Shovel Tells

THE number of times the coal shovel travels from coal bin to feed door of the furnace tells the story of a furnace. Sometimes it tells a story of inadequate heat under any circumstance. The story the coal shovel tells when there is a

HOMER ORIGINAL PATENTED PIPELESS FURNACE
in the basement is one of comfort in every room in the house at a saving of money from the moment it is installed. There is another saving in having your Homer installed now before everybody wants them at the same time. Order yours now, by phone or drop in and tell us.

ADAM ENGEL, Builder of Good Homes
PHONE 1337-J 1420 NORTH FIFTH STREET

Let Us Help You— SOLVE YOUR HEATING PROBLEM

Just give us your name and address and we will have our salesman call and go over your heating problem with you without any obligation on your part.

"EASTMAN SIBLOCO" FURNACES
\$79.60 and up, Installed Complete

EASTMAN BROS' (Formerly Silverton Blow Pipe Co.) Silverton, Oregon

SOCIALISTS TOTAL SEVEN MILLIONS
BERLIN, Feb. 7.—The Berlin social democratic organ, Vorwarts, estimates that the strength of organized Socialist throughout the world in 1924 was 7,000,000, with 566,100.

OAK FLOORING

WE have just received a shipment of 1/4 sawed plain white select, 1 3-16 x 2 1/4 in. and 3/8 x 2 in. Come and look it over.

Mr. H. M. Perry, an experienced lumberman, is now in our employ and will be glad to meet all old and new customers and give them an estimate on the material they may need. Buy now before the advance which is sure to come in a short time.

Cobbs & Mitchell Company

A. B. KELSEY, Manager
349 South Twelfth St., near Thos. Kay Woolen Mill