

OUR PUBLIC SCHOOL FACILITIES ARE GOOD

Magnificent New Building Added Last Year; Increasing Attendance

The completion and occupation of the new \$225,000 J. L. Parrish junior high school marks an



The late Rev. J. L. Parrish

epoch in the growth of the educational facilities of Salem. For years Salem, with her eight elementary and four secondary schools, has held an enviable position as an educational center. Now with the improvements lately made on the senior high school, and the erection of a new junior high school, this position has been made even more secure.

Magnificent New Building
Some time ago the growth of the city, together with unsafe conditions of one or two of the junior high schools, made necessary the consideration of the erection of a new junior high school. Less than a year ago a site was chosen for the new school on North Capitol street, and by the opening date of the present school year the building was ready for occupancy. It is a beautiful work of architecture in Idaho sandstone. The building is two stories high, and has 38 class rooms and a fine auditorium.

Rev. J. L. Parrish, whose picture is shown herewith, was a member of the first Methodist missionary party coming to the Willamette valley and the site of Salem; the party in which was Rev. Jason Lee, who built the first residence erected and occupied by white people in what afterwards became Salem. The J. L. Parrish junior high school stands on land that was owned by Rev. J. L. Parrish, and that was among the reasons that led to the selection of the name.

Increased Enrollment
There are in the public schools of Salem, 155 teachers, not counting Superintendent George Hug, or the elementary supervisor, Carlotta Crowley. Of these, 46 teach at the senior high school, 35 at J. L. Parrish junior high school, and 12 at McKinley junior high school. The remaining 62 teachers are employed in the elementary schools of the city. The number of students attending the senior high school, according to the report of December, exceeds that

of the report for the corresponding month of 1923 by 31. The total attendance during the month of December, 1924, was 998. The enrollment at J. L. Parrish for this same month, was 871, and at McKinley 189, making a total in the junior high schools of 1060 against 1063 last year. There are 2768 students in the elementary schools, making a total for all elementary and secondary schools of 4326, against a total enrollment for the same month of last year of 3980.

Credit Due Board
To the present board of education is due much praise for the splendid showing of advancement, and the maintaining of the high standards of the public school system of Salem. The names of the members of this board are as follows: Dr. H. H. Olinger, president; Curtis B. Cross, vice president; William Gahldorf, P. M. Gregory, and L. J. Simeral, W. H. Burghardt is clerk of the board. George W. Hug is the superintendent of schools; Carlotta Crowley, the elementary supervisor.

Modern Woodmen Class Initiated Here Monday

The Modern Woodmen of America ended the year 1924 with a bang up good fellowship meeting, Monday night in the WOW hall. At this time several new candidates were initiated with the solemn, dramatic form of initiation which is designed to leave no question in the mind of the initiate after he has passed through it that he is a full fledged Woodman. After initiation a banquet supper was enjoyed by all present. A joint installation of officers of all the camps in the Willamette valley will be held at the WOW hall at eight o'clock January 12.

If a man says Uncle Sam was hard on Persia and Britain on Egypt, try kicking his dog.

NOW

OREGON
"PETER PAN"

LIBERTY
"SINNERS IN SILK"

GRAND
"THE SEA HAWK"

TODAY

Dr. Lloyd W. Ivie

Chiropractic Physician

Electro-Therapist

313-314 U. S. National Bank Bldg.

Phones: 2114-Res. 630

Salem, Oregon

GRAND THEATRE

ONE NIGHT ONLY

Thursday, January 8

George Ford

Presents



The Distinguished Young American Actor

With a Great Supporting Cast of Thirty-Five In a Magnificently Staged Production of

"MACBETH"

Mail orders are now accepted. Send checks or money orders payable to Grand Theatre and self-addressed envelope for return of tickets.

Seats At Box Office Wed., January 7
Price including Tax:\$2.75, \$2.20, \$1.65 and 50c

"Fritz Leiber is the best interpreter of Shakespeare on the American stage."—George Jean Nathan, Editor, American Mercury.



WATCH OUR Windows FOR REAL BARGAINS

January CLEARANCE of ODDS AND ENDS

START THE NEW YEAR RIGHT—BUY QUALITY FURNITURE AT A SAVING

END TABLES
You can use one of these at the end of your Davenport or side of chair. Special... **\$4.95**

CARD TABLES
ACME Special... **\$4.95**
QUEEN Special... **\$2.95**

MIRRORS
Just the thing to hang over the console table or Buffet. All to be placed on sale **20% OFF**

ROOM SIZE BRUSSELS RUGS
Special **\$10.95**

Tapestry Brussels Rugs in a wide selection of desirable patterns. Colors to harmonize with any home decorative scheme—browns, blues, tans, taupes, etc. 9x12 feet and 8.5x10.5 sizes. You must see these Rugs to fully appreciate their real value.

LINOLEUMS
\$1.35 Sq. Yd. Laid
Special lot of Nairn's quality finest inlaid Linoleum, in tile and small figured effects. Shown in the newest colors. Regular \$1.75 value.

AS IMPORTANT as low price, of course, is quality. In fact, the only way to measure true value is to consider both quality and price. Put anything in this great sale to the acid test and you will be even more impressed with the tremendous values which will make this sale go down in history as the greatest ever held in this vicinity. Visit our store! See these remarkable offerings with your own eyes! You'll buy, there's no question about that, when you see these values!

DAVENPORT TABLES
Just the kind you want to go with that Davenport... **\$19.00**

3-PIECE BED ROOM SUITE
Bed, Dresser and Chiffonier, pretty ivory—The three pieces at this remarkably low price... **\$54.75**

OVERSTUFFED CHAIRS AND ROCKERS
You can use one or more of these at the prices we are asking. **20 to 40% OFF**

FLOOR LAMPS
These are Exceptional values at... **\$12.50**

Aluminum Ware
All Aluminum Ware except Wear-Ever will go at **ONE THIRD OFF**

ROOM SIZE AXMINSTER RUGS
Special **\$26.95**

The Rugs in this lot are sold as irregulars on account of slight imperfections which in no way detract from their real value. High-class 9x12-foot size. Attractive colorings. These sell in the regular way at \$37.50. Special \$26.95.

9x12 **WILTON RUGS**
Imagine being able to get real Wilton Rugs at prices so extremely low... **\$69.85**



The event Salem people have been waiting for—Our

Annual Clearance SALE OF RUGS

We've planned to make this the biggest Sale in the history of our store and to accomplish our purpose, offer values that will have no counterpart hereabouts.

\$37.50 Rugs
\$28.95

\$43.50 Rugs
\$33.50

High-grade Axminster Rugs in size 8.5x10.5. Shown in a big assortment of new, desirable patterns and beautiful colors. Special 28.95

Beautiful Axminster rugs in size 9x12. Feet, only. Also an assortment of Velvets. Both these are famous for their splendid wear.

SEE WINDOWS

A CLEARANCE OF Used Phonographs

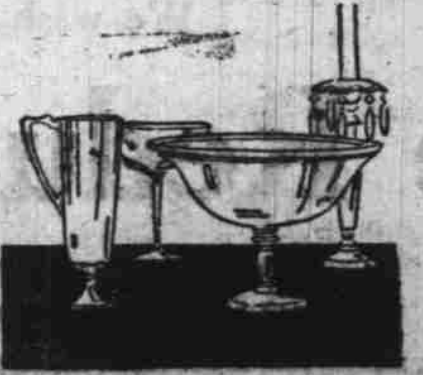
Some of these instruments cannot be told from new ones, and are easily worth many dollars more than we ask for them now. Have one sent home—Cash is not necessary.

- MAKE YOUR OWN TERMS
- \$ 25 Victor \$ 8.50
 - \$ 75 Victrola \$ 37.50
 - \$125 Brunswick... \$ 60.00
 - \$160 Columbia... \$ 72.00
 - \$150 Victrola... \$ 85.00
 - \$225 Victrola... \$ 95.00
 - \$225 Columbia... \$ 99.00
 - \$235 Victrola... \$125.00
 - \$325 Victrola... \$175.00
 - \$385 Brunswick \$199.00

PLAYER ROLLS
A large selection to choose from—Special... **69c**



DINNERWARE Odds and Ends ON SALE



—All size plates, cups and saucers, vegetable dishes, bowls, platters, cake plates, sugar and creamers, — very sharply reduced.

FOR QUICK CLEARANCE
10c - 15c - 25c - 35c - 50c - 75c - \$1 and
DINNER SETS ON SALE AT BIG REDUCTION
\$6.95 TO \$34.00

YOUR CREDIT IS GOOD
On any purchase you make even at these extremely low prices—Credit Without Interest



Where You Can Always Do Better

A CLEARANCE Used RANGES

In a business like ours, many used ranges—gas, and wood and coal—are taken in exchange for new ones. These used ranges have been put in the best condition possible to offer for resale. The prices are unusual.

- Wood and Coal Ranges**
- \$ 95 Moore \$35.00
 - \$125 Majestic \$40.00
 - \$110 Garland \$35.00
 - \$120 Malleable \$40.00
 - \$100 Charter Oak \$35.00
 - \$ 95 Estate \$30.00
 - \$ 95 Bucks \$32.50
 - \$ 65 New Rival... \$25.00
 - Lang—Like New... \$65.00
 - Cole's—Like New \$55.00
 - Others also Low as \$15.00

SEVERAL COMBINATIONS
Gas, Coal and Wood
Ranges in First Class condition at Remarkable Prices.
See Display of Low Priced Ranges in Window