

HOMES

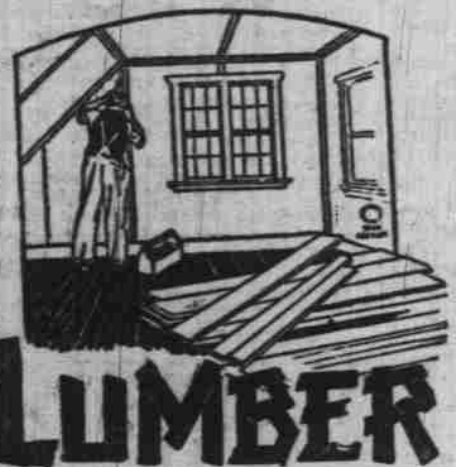


Always a Ready Market for HOLLOW-TILE Homes



Use Burned Clay Hollow Building Tile for Beauty, Safety and Comfort.

MADE IN ALL SIZES SALEM BRICK & TILE CO.



Winter

is an ideal time to make those long needed repairs about your home.

LUMBER

We can furnish you with the best of material at the right price

"Everything to Build Anything"

J. W. Copeland Yards

Salem Yard at West Salem

PHONE 576

Yards in West Salem, Albany, Lents, Hubbard, Yamhill, Hillsboro

ART AND BEAUTY SHOP WILL OPEN

Brauti Sisters Will Be Located in New Hughes Building On High

The very latest and most exclusive line of art work will be carried by the Salem Art and Beauty Shop, located in the new Hughes building. The back portion of the shop will be used as a beauty parlor. The Brauti sisters, proprietors of the establishment, are highly experienced in their respective departments, and their new place will prove a valuable addition to the city of Salem. It is planned to open the place about December 1st.

Art Work Displayed
The front portion of the shop, under the direction of Miss S. Brauti, will have on display unique art work of every description. Classically carved candlesticks, book-ends, lamp bases, and articles of similar nature will be carried on hand. Samples of the Chippendale and Gothic furniture of different period models will be in the shop and orders for full sets or individual pieces taken. Chenille rugs, a sample of which lies on the floor of the shop will also be represented. Draperies of a color combination of blue, grey, gold, and black will be hung along the walls, and parchment shades of a harmonizing color will cover the electric light globes. Floor lamps will be arranged in the corners of the room, and elaborate electric torchiers will be placed on each side of the entrance.

Studio in Rear
Miss Brauti, who is a graduate of the University of Oregon art department, and who has been a student of Miss West in Portland, will have a studio in the rear of the shop, where she will carry on her art work of which she does a great deal. Special attention will be given to home decoration, and Miss Brauti will personally call at any home, view the interior, and

make suggestions for the purchase of furniture or fixtures which will be in harmony with the other details.

Beauty Shop Well Equipped
The beauty parlor in the back part of the shop will be furnished with the most modern equipment, and there will be separate booths for manicuring, massaging, marcelling and shampooing. The manicuring booth will be curtained with organdie of an attractive shade. The furniture will be white and the color schemes of the room will be gray and apricot. Miss R. Brauti, who is in charge of the beauty department, has studied the art of beauty parlor work under Mr. Laird of Portland, and has previously conducted a shop in Coquille.

"We want to be of real service to the people of Salem," the Brauti sisters declared. "Our art department's special services will lie in advising people in their furniture and art buying so that the choice will be in harmony with other details."

COMPLETE CENSUS WILL BE COMPILED

Six Million Farms Will Be Visited By Crops of 20,000 Workers

WASHINGTON, Nov. 29 (AP)—Taking the measure of the farmer, and the farmer of the country, in accordance with an act of congress requiring the enumeration of a census of agriculture every five years, will begin December 1 and continue until completed, which is expected to be on or before January 31 of 1925. Everything is in readiness for the 15,000 to 20,000 enumerators to sally forth on their visits to the more than 6,000,000 farms of the country and put down in black and white the important details concerning them. The farmers themselves have been prepared for these visits by the use of sample questionnaires which have been widely distributed in order to familiarize them with the information required.

There were 6,448,343 farms in the country at the last decennial census in 1920 and the value of the properties was \$77,924,100,338.

The inquiries which the farmers will be asked to answer number 178 and include the facts concerning farm tenure, acreage, values, debt, expenses, cooperation in marketing, farm facilities including the number of tractors and whether the farm is equipped with a radio outfit; population, crops harvested, forests and forest products, and livestock and livestock products. The information furnished will be strictly confidential under all circumstances, and will not be used as a basis of taxation.

Athens Authorizes War On Salonica Profiteers

SALONICA, No. 27 (AP)—The prison population of Salonica has been considerably increased in the past few months by the application of a drastic anti-profiteering law by the war department at Athens.

The scale of prices in Salonica is determined twice a week at a meeting of the price commission, made up of merchants selected by the Chamber of Commerce. The schedules permit profits of from five per cent on flour and sugar to 20 per cent on silks, luxury furniture, fancy leather goods and perfumes.

This schedule of profits is enforced by the police, under the orders of the price commission. The police are under the command of the war department, and soldiers are available in case the police are unable to do their work.

The price commission superintends the purity of foods, as well as the prices at which they are sold. Recently a miller accused of adulterating wheat flour with corn was tried and found guilty by the price commission functioning as a court. He was fined one million drachmae and sentenced to six months in jail.

Scientists Equip Vessel For Travel Around World

HAMBURG, Nov. 10 (AP)—A sea-going vessel, equipped with scientific instruments and paraphernalia, is to be built for the German Society for the Knowledge of Foreign Countries. German scientists and scholars will make the ship their home, travel around the

Back Yard Horticulture

(This is the second article of a series to be run each Sunday during the whole plantation season, giving valuable information and hints for Salem home owners and others.)

The Home Landscape
Why is it that the planting of shrubbery around one home makes a pleasing picture while that around an adjoining home, containing possibly much more shrubbery, fails to make a picture? One planting may be a picture while the other is merely a collection of plants. The secret of the matter lies in selection of proper plant material and proper placing of the material selected.

The home grounds may be likened to a room in the home. The grass is the carpet and the trees, shrubs and perennials are the furniture. Scatter a collection of walnut, mahogany, oak and rattan furniture around in a room and what do you have? Place in the same room furniture of a single material and similar finish and arrange the pieces about the room with taste and the result is a pleasing and restful picture. Just so with the home planting. Scatter a lot of plants hit and miss about the yard and the result will not be a picture.

While it takes long years of study to become a competent landscape gardener still by following a few rules which we will mention below the work of the average home gardener may be greatly improved. Leave the lawn open. Don't cut up the lawn with numerous flower beds or clumps of plants. Mass the shrubbery around the borders of the yard and about the foundations of the buildings but leave the lawns open. Open lawns make the yard seem larger.

Avoid monotony in the foundation planting (the planting around the base of the house) and in the border planting by choosing plants of varying heights according to the design of the house. Use the higher shrubs between the windows and at the corners and lower ones beneath the windows. Remember that the shrubs will not always remain small. A misplaced bush may obstruct a view from the window.

Don't completely screen the foundation. Leave glimpses of foundation so that the house will not appear to be setting on shrubs.

Plant several plants of a kind or similar kinds together. Don't make a plant zoo by planting a collection of shrubs one each of many varieties. By planting two to four plants of a single kind together the ultimate result will be a large, beautiful bush. This will result in a real show of flowers, especially with shrubs like honeysuckle or the spirea. Too large a mixture of type results in a planting of little character.

The plants should harmonize in color and appearance. As a rule

the large leaved plants should be placed in the background while the smaller, finer leaved shrubs look best in the foreground where they are given closer inspection. Vines add charm to the home planting. They are in place about the corners, in the recesses and on the chimneys. A vine may transform a stump or a pile of rock into a thing of charm.

Avoid straight lines in landscape work. Nature makes the most charming pictures, but she avoids straight lines and squares. The shore line where the lawn and shrubbery meet should be in the form of little capes and bays, a series of curves.

Freaks of all kinds should be avoided. Monkey puzzle trees and palms which disfigure the lawn in winter by their need of protection in the shape of canvas or burlap coverings should not be planted. Borders of white washed stones or clam shells or other like materials serve only to disfigure a planting.

Study other yards which make a pleasing picture, and it will be found that their planning is in accord with the above suggestions.

Five Building Permits Are Issued During Week

Five building permits aggregating \$12,000 were issued from the city recorder's office this week.

Building permits to date total \$36,100, which will constitute the total for November.

Let's not fight for more liberty until we learn to handle what we've got.

CREAMERY ACQUIRES FUTURE LOCATION

Lot at Commercial and "D" Bought in Preparedness for New Building

Looking forward to the day when it will be forced to seek newer and larger quarters, the Capital City Cooperative Creamery company has purchased a large lot on the northwest corner of Commercial and D from Mrs. Kattie Herrin, opposite the Damon Grocery store.

According to C. E. Bates, manager for the creamery, there is no definite date set for the construction of the new plant. However, when this is undertaken, it will be large enough to take care of future business and be on up-to-date and modernly equipped, creamery.

The lot measures 88 feet by 70 1/2 feet. Ben West, a Salem real estate dealer, handled the transaction.

Swiss Chalet Residence Is Now Nearly Completed

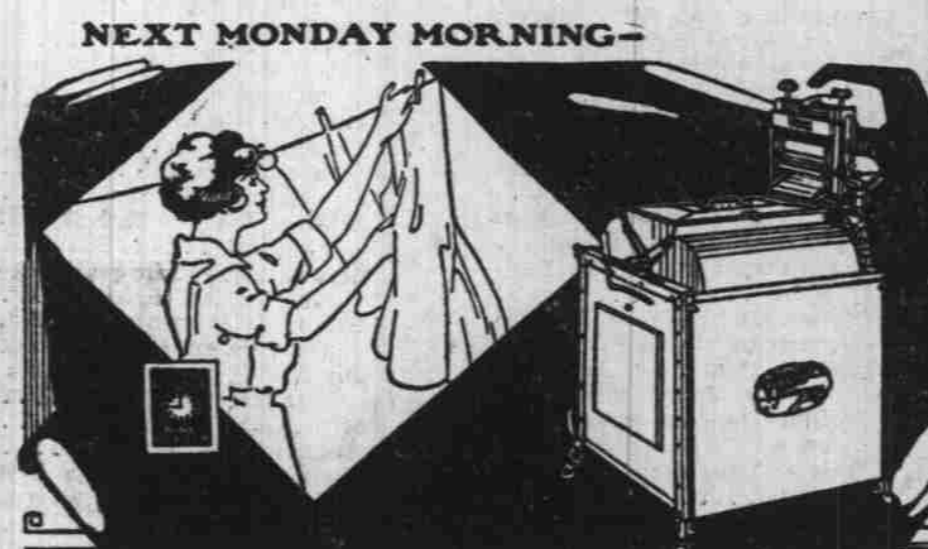
An unusual type of residence, belonging to R. A. Harris, Salem realtor, is nearly completed. The dwelling is of the Swiss chalet type and is located on an island in Mill creek just west of North Capitol.

STANDARD ELECTRIC RANGES

The beauty of Standard appeals to every woman. She can cook better meals and keep her kitchen clean, with less effort with a Standard.

Standards are built for people of good taste, who buy for a lifetime. They are ranges designed for economy, convenience, beauty and comfort. They have been built for 17 years.

Come in and see these ranges. We can supply you with any model.



The VOSS Electric Washer

This fully equipped washer affords quicker and easier washing with the utmost safety and convenience. You'll appreciate its swinging wringer, locking in four positions, the large opening for the tub and many other conveniences. You cannot afford to be without a Voss. It will reduce your expense.

Wash Quicker—More Economically Than Ever!
Wood Tub \$85.00
Copper Tub 98.50

A small payment puts one in your home, balance easy monthly payments without interest.

Most efficient! Premier Duplex Electric Vacuum Cleaner

Gets all the dirt

It draws up the dirt from the very bottom of the rug and cleans every corner of the house with its powerful suction. Let us demonstrate in your home. Sold on easy terms.

No Interest

We Charge No Interest

GIESE-POWERS
357 10 371 COURT ST

We Charge No Interest



Electrify Your Home

EVEN SANTA appreciates the warm glow of the electric heater after braving the cold wintry winds.

This and many other electric appliances make charming Christmas gifts.

Just think of breakfast every morning with the coffee made right at the table in your own percolator—and crisp hot toast made at the same time on your electric toaster.

Besides these two important necessities, no home is complete without a vacuum cleaner and an electric iron.

These are just a few of the home comforts which make most welcome Christmas gifts and may be found at



Brownell Electric Co.

397 State.