

SEVENTY-FOURTH YEAR

SALEM, OREGON, SUNDAY MORNING, OCTOBER 5, 1924

NEW STUDEBAKER CARS POPULAR

Public Interest Demonstrated at Salesrooms By Millions

According to official reports from South Bend the new Studebaker models announced September 14 have made a decided popular hit, the sincerity of which is being evidenced in a steady increase in orders.

The roller side enclosures. The steel upper structure of the body is made strong enough to mount the rugged steel rollers and room is provided to conceal them when they are rolled up.

The price is no higher than that of the former open car.

Handsome Closed Cars There is also a complete variety of unusually handsome, closed cars including five and seven passenger sedans; three, four and five passenger coupes, and three berline-type bodies.

It is interesting to note that all the new duplex and closed models carry a plate stating that the "bodies are by Studebaker."

Even had one advantage. She didn't exhaust herself trying to amuse herself while servants did the work.

Swedish Premier Urges Adequate State Defence

STOCKHOLM, Oct. 4.—Social prosperity will come, not by preaching a holy war against capitalism, but by championing the cause of thrift, work, and confidence, the three great drivewheels of modern machinery, says Sweden's premier, Ernst Trygger, in his key-note address just delivered in Malmoo.

The premier, in opposition to the Social-Democrats, urged an adequate national defence as provided for in the bill submitted to the Riksdag by the present conservative government. Strongly emphasizing this as the paramount issue in the coming elections Mr. Trygger pointed out how Sweden's prosperity and natural wealth spelled danger in the attractions for hostile countries.

The present situation in the world, the speaker said, although holding strong promise of improvement, does not yet justify unpreparedness, and even the Dawes plan in its practical application is likely to cause serious difficulties. The premier ended his speech with an emotional appeal, declaring that the voices of our forefathers call to us, "Forget not Sweden, the ancestral home of liberty, justice and duty."

A head never swells until the brains inside have reached their point of saturation.

READ OUR WANT ADS

Hot accurately timed spark

Delco Ignition for Fords can be timed and your engine tuned up in a few minutes by a simple timing adjustment on the Delco Distributor.

Proper adjustment plus Delco's automatic spark advance plus the fat, hot spark that Delco delivers will give you greater mileage. Your engine will be smoother and more powerful.

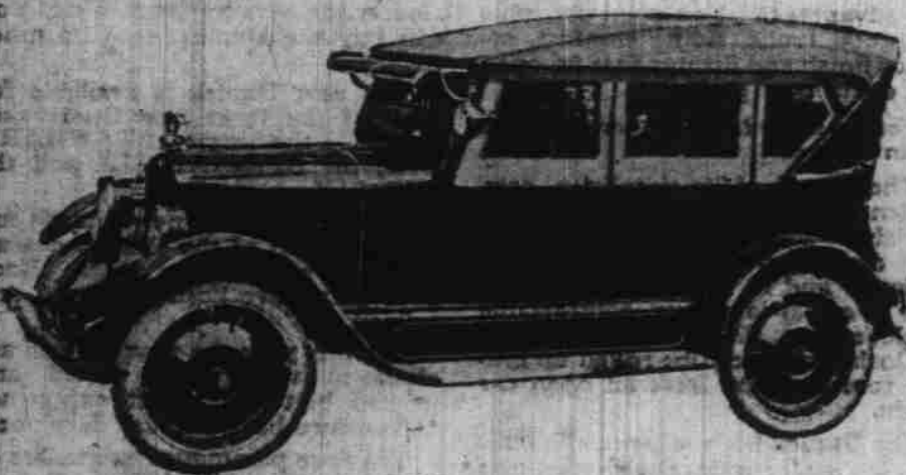
Delco Ignition for FORDS

is a complete ignition system—the same in quality and in operation as the Delco ignition found on the world's highest priced cars.

E. H. BUNELL Battery and Electrical Service 238 N. High—Phone 203

Avoid timer troubles by installing Delco today! \$1.50 complete with overhead wiring—\$3.50 complete with Delco coil. Both services include...

Glass Enclosure Curtains (Made in Salem)



This Is What You Have Been Waiting For

Light in weight, panels solid on doors, opening with door, with ventilation in each door panel. No rattles, rumbles or vibration. Gives clear vision to all in car.

Real Closed Car Comfort

When installed on your touring car or roadster. Place your order now for future installation and avoid delay as we are going to be rushed with orders when the rains start.

In our new location we have more room for our new departments, added during the past year, to our top and trimming business. We now are prepared to do Automobile Glass Work and Automobile Woodworking. California Tops and Glass Enclosures built complete here in our own shop.

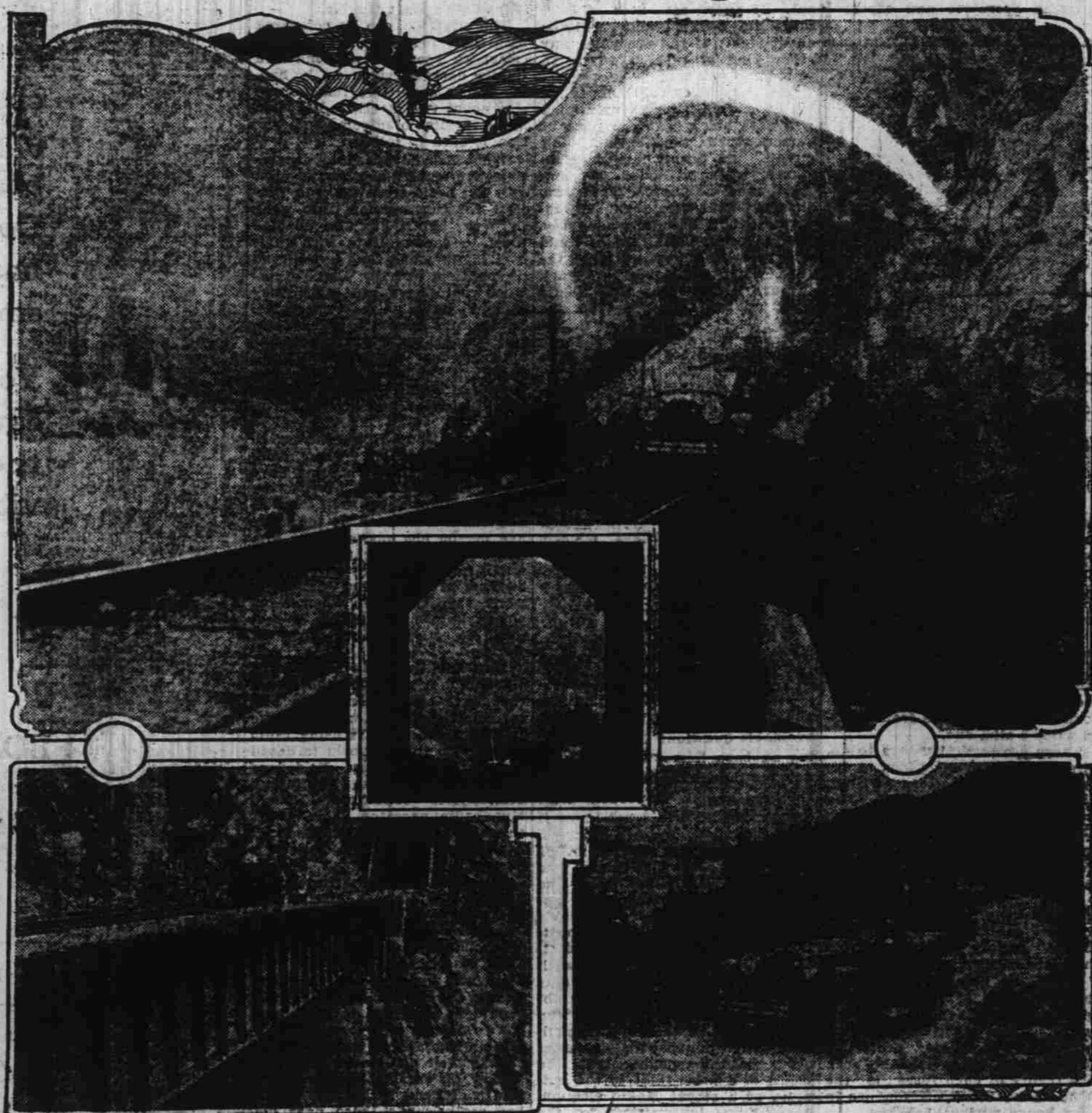
Come in and see us.

Wood's Auto Top Shop

255 Commercial Street.

T. C. WOOD, Mgr.

Views of Packard Crossing Canada



First motor car crossing Canada under its own power. Large picture shows the character of country which will be opened to American automobile tourists when the road for which the Lincoln Highway officials were pathfinders is built. Center picture shows the Packard pathfinder entering a tunnel. The other views represent the

wide difference in present "road" conditions, a perfect gravel road along the edge of one of the seemingly countless beautiful lakes and a combination of tunnel and trestle that had to be negotiated. On some trestles every other tie had been removed and the car had to be taken across on a track of loose ties laid across the gaps.

OAKLAND GETS NEW DIRECTOR

Harry Robins, Formerly With Dodge Brothers, Appointed Director

C. W. Matheson, vice president and director of sales of the Oakland Motor Car Company, announces the appointment of Harry M. Robins, formerly director of foreign sales of Dodge Brothers, as director of districts.

Mr. Robins will again be associated with Mr. Matheson, who was formerly Dodge Brothers vice president in charge of sales, and will have an important part in carrying out plans for development of the Oakland dealer organization throughout the United States.

Mr. Robins was an executive of the Dodge Brothers sales organization for 10 years, his principal work being the organization and development of their overseas business.

With characteristic vigor, Mr. Matheson, upon becoming sales chief of the Oakland organization, immediately put into effect plans for the strengthening of the Oak-

land factory selling and dealer organization. Several other appointments in the selling organization will be announced in the near future.

France Would Popularize Remote Desolation Island

LE HAVRE, France, Oct. 4.—An exhibition has been organized at the Havre museum to awaken interest in Kerguelen or Desolation Island, about 90 miles long, lying in the Indian Ocean halfway between South Africa and Australia, which was officially taken over by France in 1893.

Rene E. Bossiere, of Havre, has made frequent visits to the island and is endeavoring to develop it economically by sheep rearing and as hunting resort for the adventurous. Etienne Peau, curator of the Havre museum, was recently sent there on a scientific mission and returned with many interesting specimens of flora and fauna. A French company on the island employs 200 people from Oct. 15 to March 10, who prepare and export hides, shells, tusks, oils, etc. Sea elephants abound in great numbers on the shores of Kerguelen, and provide wonderful sport for the hunter.

Give the undertaker credit. All progress waits upon his work of removing obstructions.

NEW TYPE TRUCK FOR BUS WORK

New Moreland Double Deck Six-Wheel Bus in Use at Los Angeles

The first consignment of double deck, six-wheel buses having six-cylinder super power engines, have just been delivered to the Los Angeles Railway company for use in the city of Los Angeles. White double deck buses have been largely used in this country and abroad and a few examples of single deck six-wheel double deck buses are in existence, a six-wheel double deck bus has never been made before. By the adoption of this improved type of vehicle, the Los Angeles Railway company have shown their up-to-date progressive spirit.

The double deck, six-wheel bus is a new Moreland creation and the Los Angeles Railway company officials, after carefully looking into the matter have recognized the advantages of this construction and placed an order for a certain number with the Moreland company.

For coaches and bus work, pneumatic tires are preferable on account of the increased comfort to passengers and because they offer less road resistance than solid rubber tires. Pneumatics, however, are not built for very heavy loads and besides their cost above a certain size rises disproportionately. Overloaded pneumatic tires are not only a source of expense but one of danger, due to their susceptibility to punctures and blowouts. By employing a six-wheel construction it is possible to reduce the load on each wheel, thereby rendering pneumatics for heavy duty double-deck buses practical and economical.

ROAD CONDITIONS

As autumn approaches, the motor tourist is forced to pay increased attention to bulletins showing the condition of the roads over which he plans to travel. He scans reports headed "Road Conditions" and finds that one road is to be avoided after a rain, another is impassable in bad weather and still another is rough and uncomfortable to use.

Other is impassable in bad weather and still another is rough and uncomfortable to use. On other routes the road bulletin simply lists the highway as "concrete." No other explanation is necessary. A concrete road is good in the fall as well in midsummer and rainy days do not interfere with time schedules.

Little wonder that hotel owners along improved roads reports a lengthening of the tourist season. Motorist object to tieups due to bad roads and naturally seek the routes that assure uninterrupted travel. October is an ideal month to motor—when the roads are dependable.—Concrete Highway Magazine.

RICKENBACKER TROPHY

A handsome bronze figure, 31 inches in height, was designed by Miss Josephine Kern, the famous young American sculptor, and presented by Captain E. V. Rickenbacker, American ace of aces and vice president Rickenbacker Motor, for Light Aeroplane Contests.

Instead of flights around a set course, Rickenbacker stipulates that the flights must be cross-country from city to city, non-stop.

The purpose of the trophy is to develop small, low powered, low price, one-man planes, as one of the types best suited to general commercial use.

The first contest for the Rickenbacker trophy will start at the close of the International meet at Dayton, and end at Detroit—a 225 mile trip, which must be made without stop, or refueling.

LITTLE CARE IS GIVEN TO AUTOS

Other Machinery Is Inspected, Oiled and Repaired—Auto Runs Unaided

Vacations and vacation tours are practically over for 1924 for most automobile owners, but the use of their cars will continue throughout the entire winter. Perhaps the hardest usage of the year is over, however; and this is the time the careful motorist will inspect his car from "stem to stern," and make adjustments to compensate for the wear of the strenuous summer season and prepare for winter driving.

The following suggestions on what should be done are given by R. K. Jack, chief engineer of the Olds Motor Works, Lansing, Mich., manufacturers of the Oldsmobile Six:

"No piece of machinery gets as little care as an automobile," says Mr. Jack, "a locomotive makes a division run of 200 miles or so, goes to the roundhouse and is thoroughly gone over by skilled mechanics. Ship and stationary engine have experts constantly watching them, supplying oil and giving them attention every moment they are in operation. An automobile is fortunate if it is oiled and greased at proper intervals. Manufacturers realize this condition and strive to make an automobile as nearly a "perpetual motion" machine as is possible insofar as care is concerned.

"But some care must be given even an automobile. And at this time, after the touring season, a thorough inspection and several changes or adjustments should be made. "Every nut and bolt should be tried and tightened, as some are sure to work loose through a hard season's driving. The engine should be checked and turned up by a first class mechanic with instructions to make any repairs he finds necessary. It is not likely any extensive repairs will be required, but it is wise to give such orders, as a minor repair bill now will save trouble and a larger bill later.

"Attention should be given the lubrication system, and in most cases it will be found advisable to change the lubricant, particularly in the transmission, to a lighter grade for winter driving. The oil in the engine should be changed every 300 or 400 miles in winter, as crank case dilution is much more liable to occur in cold weather due to the crake being left out longer while the engine is warming up.

"The battery should be tested and if the cells are found below the minimum the battery either should be recharged or an adjustment made in the generator. The shorter days and colder weather cause a big drain on the battery and it should be put in the best of condition at this time of the year. A fully charged battery never freezes. The battery terminals should also be examined, as they may have become corroded, causing a poor connection. Before replacing the terminals, it will be a good plan to coat them with vaseline.

"A check of the electrical system may show loose terminals and worn places in the wiring. The generator, in many cases, should be changed to increase its power so that it can take of the extra demands of cold weather driving.

"It is well to drain and wash out the radiator, removing rust particles and foreign substances collected during the summer. It then will be ready to receive an anti-freeze mixture when next zero weather arrives. The hose and all water connections should also be examined, for a leaky hose is liable to cause an ice-increased engine some cold night.

"Spark plugs should be cleaned and if there is carbon present in the combustion chamber it should be removed at a reliable service station. If a driver has been using a lean mixture during the summer it will be advisable to change the carburetor to give a richer gasoline mixture. These things should be done to make easier starting during cold weather.

"Rear tires wear faster than those on the front wheels, and it will be economical and add to safety to change, putting the front wheel tires on the rear and the rear on the front. This of course should only be done where cars are equipped with non-skid tires, front and rear, as is the case with Oldsmobile.

"The above list appears lengthy but the entire cost and time involved are small, particularly when compared to the grief and expense that is apt to follow if they are neglected."

weather due to the crake being left out longer while the engine is warming up.

"The battery should be tested and if the cells are found below the minimum the battery either should be recharged or an adjustment made in the generator. The shorter days and colder weather cause a big drain on the battery and it should be put in the best of condition at this time of the year. A fully charged battery never freezes. The battery terminals should also be examined, as they may have become corroded, causing a poor connection. Before replacing the terminals, it will be a good plan to coat them with vaseline.

"A check of the electrical system may show loose terminals and worn places in the wiring. The generator, in many cases, should be changed to increase its power so that it can take of the extra demands of cold weather driving.

"It is well to drain and wash out the radiator, removing rust particles and foreign substances collected during the summer. It then will be ready to receive an anti-freeze mixture when next zero weather arrives. The hose and all water connections should also be examined, for a leaky hose is liable to cause an ice-increased engine some cold night.

"Spark plugs should be cleaned and if there is carbon present in the combustion chamber it should be removed at a reliable service station. If a driver has been using a lean mixture during the summer it will be advisable to change the carburetor to give a richer gasoline mixture. These things should be done to make easier starting during cold weather.

"Rear tires wear faster than those on the front wheels, and it will be economical and add to safety to change, putting the front wheel tires on the rear and the rear on the front. This of course should only be done where cars are equipped with non-skid tires, front and rear, as is the case with Oldsmobile.

"The above list appears lengthy but the entire cost and time involved are small, particularly when compared to the grief and expense that is apt to follow if they are neglected."

THE JOY CHILDREN BRING

BERLIN, Oct. 4.—It is the hobby of Dr. Laura Tarnas to collect children. She is a welfare worker in Berlin, and her house is constantly filled with little boys and girls for whom she finds homes. "It is a wonderful recreation from the cares of my professional work," the doctor said, "to come home every night with two or three new children tagging at my skirts.

AUTO TOPS W. R. McALVIN J. H. 545 North Church Street.

WANTED—YOUR OLD BICYCLE Your old bicycle and small cash payment makes you owner of a new bicycle. —BALANCE WHILE YOU RIDE— DAYTON — COLUMBIA — AND OTHERS Kiddie Kars — Wagons — Children's Wheel Goods. Lloyd E. Ramsden 367 Court Street

The Battery That Is Charged Dry Willard STORAGE BATTERY Have your battery inspected every two weeks. Regular inspection prolongs the life of any Battery. JOE WILLIAMS PHONE 198. 531 COURT ST. Automobile Electrical Work of All Kinds

Car Broken Down? "JIM" "BILL" Smith & Watkins N. W. Corner Court and High Streets Phone 44 Parts for All Cars