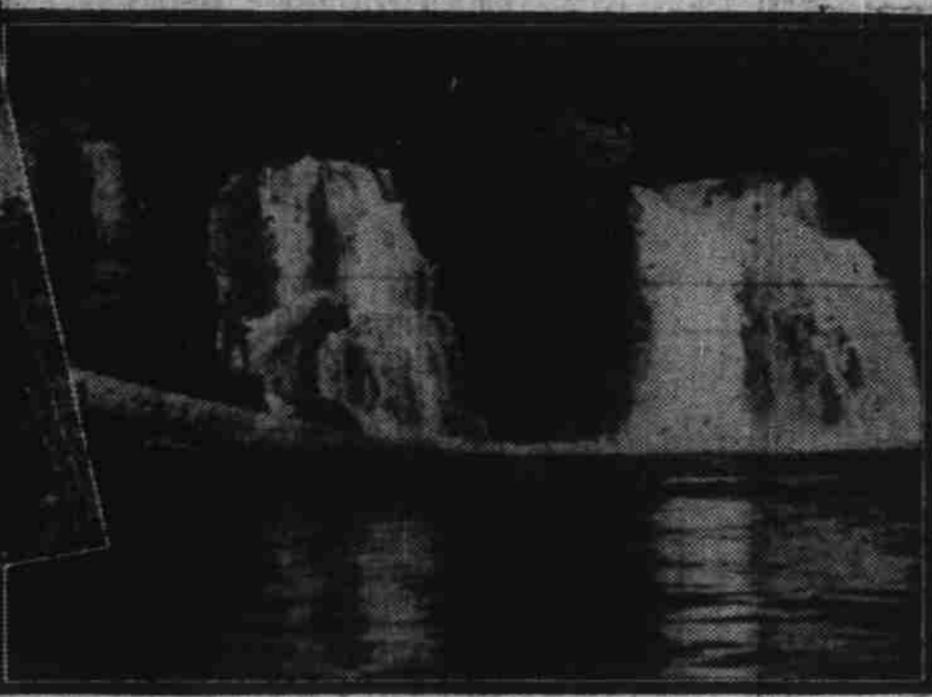


SEVENTY-FOURTH YEAR

SALEM, OREGON, SUNDAY MORNING, AUGUST 24, 1924

Automobile News OF THE DAY

Interesting Views Taken by Local Accessory Man



SCENE OF THE SALMON FALLS, LITTLE NORTH FORK OF THE SANTIAM RIVER
SCENE OF CAR IN DISTANCE

Scene across canyon on Hair Pin turn, where the mountain road after leading past the Black Eagle mine doubles back in hair pin fashion.

CLOSE UP OF CAR

A close up of a part of the mountain roadway. This scene is on one of the steepest grades of the trip.

In following a policy of "ser-nex Sunday" which he has not vice for the outfit, the Western Auto Supply Co. has and will from time to time log some of the better and more beautiful short trips that can be made by the autist who wishes to get away from the hum and buzz, the dust and dirt of the usually traveled thoroughfares.

W. F. Watson branch manager of the Salem house of Western Auto, is in charge of the trips, and is an experienced log maker. No little amount of enthusiasm has followed his logging of other trips on the part of autists, and in giving the following trip he has made an effort to cover the principle points of interest and give a simple but direct schedule that in following, the fan will find is very complete.

The "Call of the Wild" has been ringing in the mind's ear of practically every motorist this season, probably more so than ever before due to the ever increasing number and to the new and adventurous trips being opened in every locality. A great many motorists have probably found themselves searching over memory, hearsay, and old newspaper stories for "a trip

their rapids and falls. The Little North Fork trip is not a long one in point of miles, nor yet a weary trip in point of time, for at every turn comes a new thrill, and one's excitement (if he be a real lover of the open places) carries him on to heights that only such a scenic display could give.

Leaving Salem east on State street, one passes the State Penitentiary to his left. At the "4 Corners" one follows the pavement to the right and within the next five miles the Cottage Farm, State Hospital and Boys Training School are passed in order mentioned.

Turner, Annaville, Sublimity and Stayton are passed. At Stayton the road continues straight ahead from the approach to the town, toward Mill City. Indicators mark the way well and a little care on the part of the driver will eliminate any possibility of getting off the right road.

A few miles east of Stayton is the end of the pavement at the present time. A good gravel surfaced road leads from here into Mehama which is 30 miles from Salem.

Mehama is on the north side of the North Santiam river and the road here leaves the valley and goes to the left where the indicator says "Elkhorn;" from this point on there is but one road that leads direct up the Little North Fork, the stream known as such flows into the North Santiam about one half mile above the town of Mehama.

Taylor's camp ground is a beautiful camping place and lies to the right of the main highway, two miles above Mehama, and just beyond this point where there are a couple of large fir trees standing in the road right-of-way the name of "Chain Flats" has been given to the small district surrounding. Before the county and state had given help for better roads this flat marked the place where the mountain roads began to get too heavy to pull without chains.

One of the big features of the Santiam country is the spring water that comes trickling from the rocky walls here and there. Rock Springs is the first of these springs that one comes to, and any tourist in the world will appreciate a drink of this crystal clear water. Clay Point, Camp Flats, and the first Covered Bridge crossing the Little North Fork of the Santiam river are the next points of interest. Good fishing obtains at any of the many "fish holes" along this part of the river.

Approximately 41.4 miles from the Capitol city and a short distance over a mile above the first covered bridge, just at the left of the road in one of the most picturesque parts of the trip is a great rock that rises some 75 feet from the roots of the neighboring pine and fir. This rock is known as "Castle Rock" and is at the present time the center of a most

interesting bit of adventure and speculation. Many years ago, there is a legend states, a treasure was buried underneath what is now apparently a great rock. The value of the treasure has been variously

(Continued on page 3)

STAR OFFICIALS VISIT DEALERS

President and Sales Manager Visit Salem Automobile Co. in Coupe

Norman DeVoux, president of the Star Motor company of California, and C. T. Tuller, sales manager, were in Salem this week from Oakland, California.

These two head Star officials drove a new Star coupe from the California factory, calling on every Star dealer enroute, leaving here for Portland and then on to Seattle.

The new Star coupe was turned over to F. G. Delano of the Salem Automobile company and the employees of the local firm, and told to take it out and put it through its paces, which was done in no uncertain way.

The new coupe is called the sport coupe in the Star line and contains the vibrationless motor, which will be incorporated in all sport and closed models from now on. In addition to the improved motor the sport coupe has one-piece wind shield, cowl ventilator, inside ventilators, five 4.95 flisk full balloon tires, new type Hayes disc wheels, demountable at the rim and at the hub, motor-meter and bar cap, scuff pads, wind shield swipe and upholstered in mohair, and painted "Flint grey," a truly beautiful job.

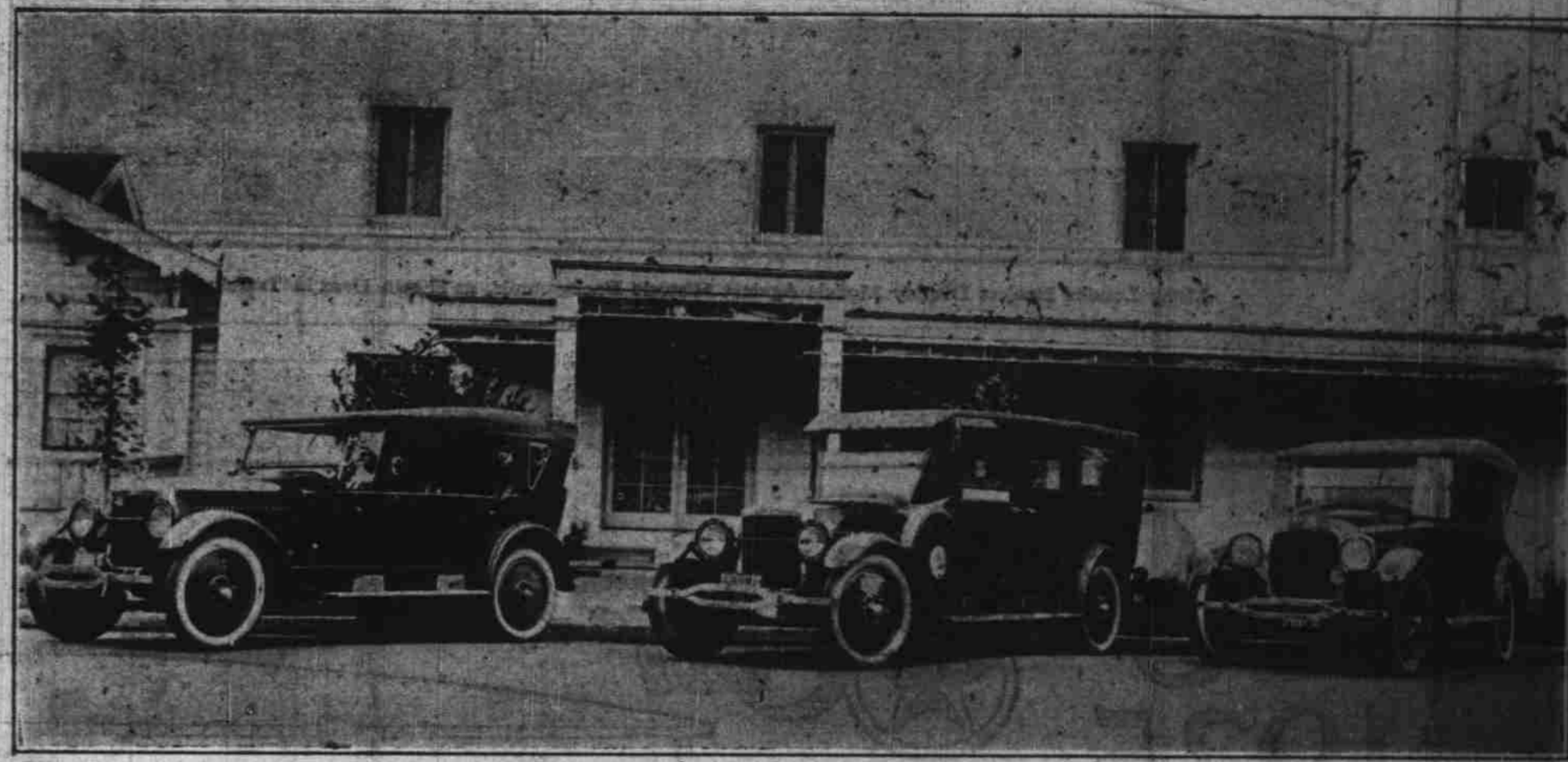
Nothing like this new sport coupe has ever been shown by any manufacturer before, and when the price is taken into consideration it is truly remarkable. No vibration at any speed and a job that anyone will turn twice to look at.

The Salem Automobile company has a carload of the sport touring, sedans and coupes enroute from the factory, which reached Salem Saturday, and they are expecting to deliver a large number of them within the next few days.

40,000 People a Month Buy the Chevrolet Cars

G. L. Newton, manager of the Newton Chevrolet company, local Chevrolet dealers gives out some interesting figures on Chevrolet sales from information he has re-

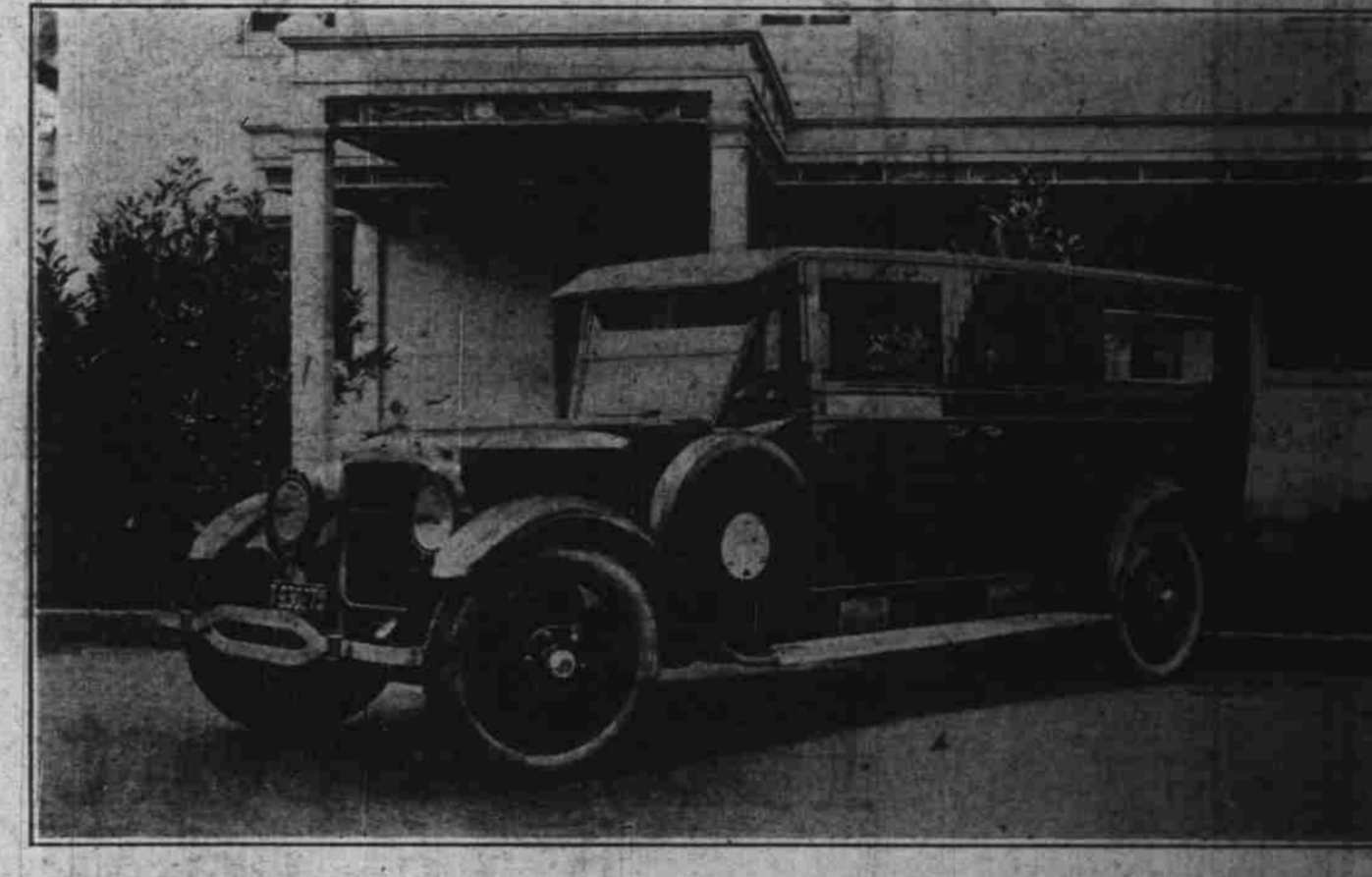
Webb Funeral Parlors Equipped with Studebaker Cars



Above is pictured the new Studebaker funeral car recently purchased by Webb Funeral parlors, and two seven passenger Bix-Six Studebaker cars which are part of the funeral equipment of that company.

The new funeral car is of the limousine type built on a Studebaker Bix-Six Speedster chassis and is one of the few limousine types to be found on the Pacific coast. The funeral car is in harmony with the tendency towards greater simplicity and beauty in funeral work and is one of the most up-to-date pieces of equipment in the state.

The sale was made by the Marion Automobile company, local Studebaker dealers.



LANDAU SEDAN IS ANNOUNCED

Oakland Motor Car Co. Announces a New Addition to the Oakland Line

A new addition to the Oakland line—the Landau Sedan—is announced by the Oakland Motor Car company, Pontiac, Mich.

The new car combines the individual appearance of the Landau type with the practical serviceability of the sedan. It is finished in Buckingham gray with red striping, special plush mohair upholstery to match, nickel trimmings and black fenders. Double bar bumpers in front, fender guards at the rear, nickeled head and cowl lamps and aluminum running board apron shields are touches of brightness in keeping with the richness of finish and completeness of every refined detail of appointment.

The new Fisher one piece ventilating windshield is a feature affording open vision and snug protection, yet sliding upward when needed to give a full sweep of fresh air across the entire width of the driving compartment. The car is equipped with balloon tires, has Oakland Duco finish, mechanical four wheel brakes, all controls centralized on the steering column, automatic spark control and is powered by the smooth, dependable Oakland six-cylinder L-head engine. Improved back and cushion springs, snubbers on front springs and an improved permanent visor are included in the equipment.

Fender guards instead of full bumpers on the rear are standard equipment as well as gasoline gauge on the instrument board. Silk roller shades, dome lights, walnut steering wheel, shirred plush mohair pocket on front doors, floor-type heater, robe rail,

foot rest, patent window lifts, it has five disc steel wheels as standard equipment, and is fitted with four 31x4.95 balloon tires. If hell is no worse than it is pictured, some people are going to get off mighty light. Like all of the Oakland six line,

CONSTANTLY IMPROVED BUT NO YEARLY MODELS

DODGE BROTHERS MOTOR CARS

BONESTEEL MOTOR COMPANY

474 S. Commercial PHONE 423

Great Reduction in USED CARS

- For the following week
- Late Model Franklin Demi-Sedan, Balloon tire equipment.
- Late Model Flint, 4 Passenger Coupe, only driven 3,000 miles.
- Four-cylinder Oldsmobile Sedan.
- 7-Pass. Jordan in excellent condition.
- 1924 Ford Roadster.
- 1921 Ford Touring.
- 1921 Dodge Sedan.
- 1919 Dodge Roadster.

All the above cars are equipped with numerous extras. Trade with us with confidence. We will give you the most reasonable terms. Guaranteeing you service out of your purchase.

MacDonald Auto Co.

Ferry and Cottage PACKARD MOTOR CARS DISTRIBUTORS