



SALEM IS SECOND IN BUILDING GAIN

Increase of 129 Per Cent
Over Mark of 1923 Shown
Is Straus Report

Eugene holds the distinction of outstripping every other city on the Pacific coast in the percentage of increase in building during the first half of the year 1924, according to the semi-annual report of building activities, compiled by S. W. Straus and company.

LOOKING AHEAD FOR 1c

Plan now for winter comfort by asking for further information regarding the most economical heating plant on the market.

**Eastman Sibloco
Furnaces**
\$79.60 and up

A 1c post card brings the information without any obligation on your part.

**Silverton Blow Pipe
Co.**
Silverton, Oregon

According to the semi-annual report of building activities, compiled by S. W. Straus and company, Eugene's permits increased 169 per cent during the first six months of 1924 over the corresponding period of 1923, and 185 per cent over the first six months of 1922.

Salem was second, with an increase of 129 per cent over her mark of 1923. Portland showed an increase of 13 per cent over the first six months of 1923.

Eugene holds fifth place among the cities of the Pacific northwest in building activity during the first six months of the year. Portland, Seattle, Tacoma and Spokane are the only cities to lead, and Spokane's showing scarcely bests that of Eugene.

There is not a city in the state of Washington of population of 30,000 or under that came within much more than one-third the mark set by Eugene.

Salem Shows Big Gain in Six Months Building Record

Building permits to the number of 91,904 and calling for \$250,853,663 in construction costs were issued in 79 cities of the seven Pacific coast states during the first six months of 1924, as shown by a special semi-annual building survey just issued by S. W. Straus & Co.

Although this volume of construction amounts to more than a quarter billion of dollars, it reflects a slight recession in building activities from last year, being 4 per cent less than the total for the first half of 1923, but is 30 per cent greater than that of the comparative period of 1922.

This slowing down of building programs, in keeping with general business policy throughout the country, is particularly evident in California where 56 cities comprised in the S. W. Straus & Co. survey report a total of \$199,151,007, 9 per cent less than the total for 1923 but 27 per cent greater than for the first half of the previous year.

Washington, Oregon and Arizona show substantial gains over both 1923 and 1922, while Nevada and Idaho show reductions from both previous totals and Utah a 15 per cent loss from 1923 but a 73 per cent gain over 1922. The most stable building activity is that of Oregon where three of the four cities included show gains over 1923, and all gained over the previous year.

Los Angeles reports 27,748 permits issued calling for a construction total of \$78,818,738 for the six months, 16 per cent less than for the same period of last year but 32 per cent greater than for the first half of 192. In the Los Angeles metropolitan area, 15 municipalities report \$105,440,890 a 12 per cent reduction from last year but a 41 per cent gain over the previous year.

San Francisco issued 5,396 permits during this period at a construction total of \$26,157,070, which is 8 per cent greater than for the first half of 1923 and 11 per cent greater than for like period of 1922. In the San Francisco Bay metropolitan area, 14 municipalities issued \$52,672,004 in building permits, 8 per cent more than for the first six months of last year and 20 per cent more than for the first half of the year before.

Portland issued 7,646 permits at \$15,032,855 in construction costs, 13 per cent over comparative figures of last year and 16 per cent over those of 1922, while Eugene and Salem reflect the building prosperity of Oregon to a remarkable degree. Eugene, with \$1,555,435, shows a gain of 169 per cent over 1923 and of 185 per cent over 1922, while Salem, with \$1,157,255 gains 129 per cent and 136 per cent over the respective previous comparative figures.

Automobiles were invented to get a man's mind away from his other troubles.

MONTH PROMISES BUILDING REVIVAL

Permits Taken Out So Far
Represent Over \$50,000
in New Dwellings

July promises to be a good month for local building activities, for so far permits totalling \$53,900 have been issued from the office of the city recorder. Work has started on the excavating of the basement for the new \$175,000 Elks temple on State street and it is possible the building permit will be taken out later in the month, though it may not be obtained until sometime in August.

The week ending Saturday noon was the heaviest in the last month or two, when permits amounting to \$23,750 were issued. With the exception of one permit for \$400, covering the erection of a small garage, the permits were for dwellings ranging from \$1500 to \$5000 in all there were nine permits issued.

BITS OF REAL LIFE —By— Esther L. Williams

TWO MOTHERS

One mother stood the other day beside an open grave into which she saw lowered the silent form of the son who was the pride and joy of her life. Honored and loved in life, he was honored and mourned in his death. With her an entire nation wept and many prayers were lifted that she might be comforted and sustained in her grief. Her mother-heart was torn with sadness, but there was the soothing balm of sympathy to sustain and strengthen her in her hour of sorrow.

The next day, another mother stood alone and a curious, jeering throng, and saw her boy, once the pride and joy of her life, led to a rude scaffold upon which he was to die. She saw his blanched lips move in prayer as the black cap of death was drawn down. She saw no more, but heard the spring of the death trap which hurled his young life into eternity and knew that his last thought had been of her, for with all his faults, he had loved her.

Her mother-heart was torn with an unspeakable agony, but there was none to comfort. She who had gone down into the valley of the shadow of death to give him life, could not save the life she gave. But he was still her boy.

Two mothers, suffering, loving, sacrificing the heritage of motherhood. But let no mother think she has drained life's cup of sorrow to the dregs if she has not been forced to follow the son she loves to an ignominious death on the gallows.

And who shall say that the punishment for his crime did not fall heaviest on the mother who bore him. For easier it is to die for one we love, than to see him die.

NEW CORPORATIONS

The following articles of incorporation were filed here Saturday: Gotham Mining company, Portland; incorporators, Louis H. Hamig, Collin W. Gotham, John M. Pipes; capital \$5000.

Soft Drink Dispensers' association, Portland; incorporators, L. Emery, George Harris, R. E. Marsh.

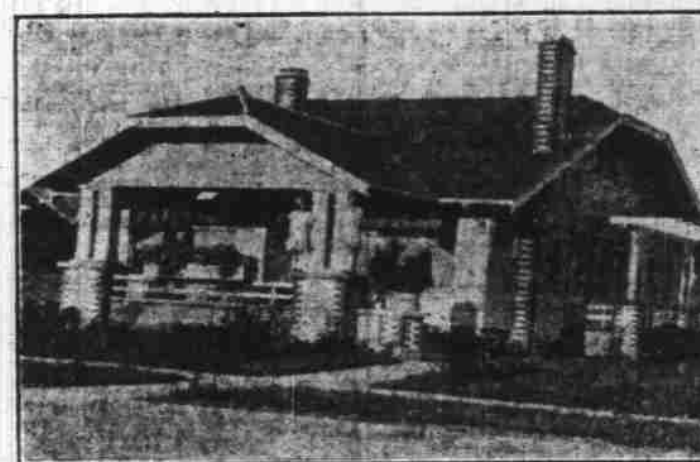
A permit to operate in Oregon was issued to the Pacific Flour Export company, a Delaware corporation with a capital of \$100,000. F. L. Shull of Portland is attorney-in-fact for Oregon.

MORELAND TRUCK WINS

According to the Motor Registration News, the Moreland Motor truck wins over all competitors in California for May. The figures are: Moreland, 62; White, 44; G. M. C., 41; International, 29; Mack, 26; Autocar, 20; Kleiber, 16; Fogel, 15; Republic, 15. Vick Brothers are the local Moreland dealers.

Clothes don't make the man, but they sometimes fake the man.

IMPORTANT TO HOME BUILDERS OR HOME BUYERS

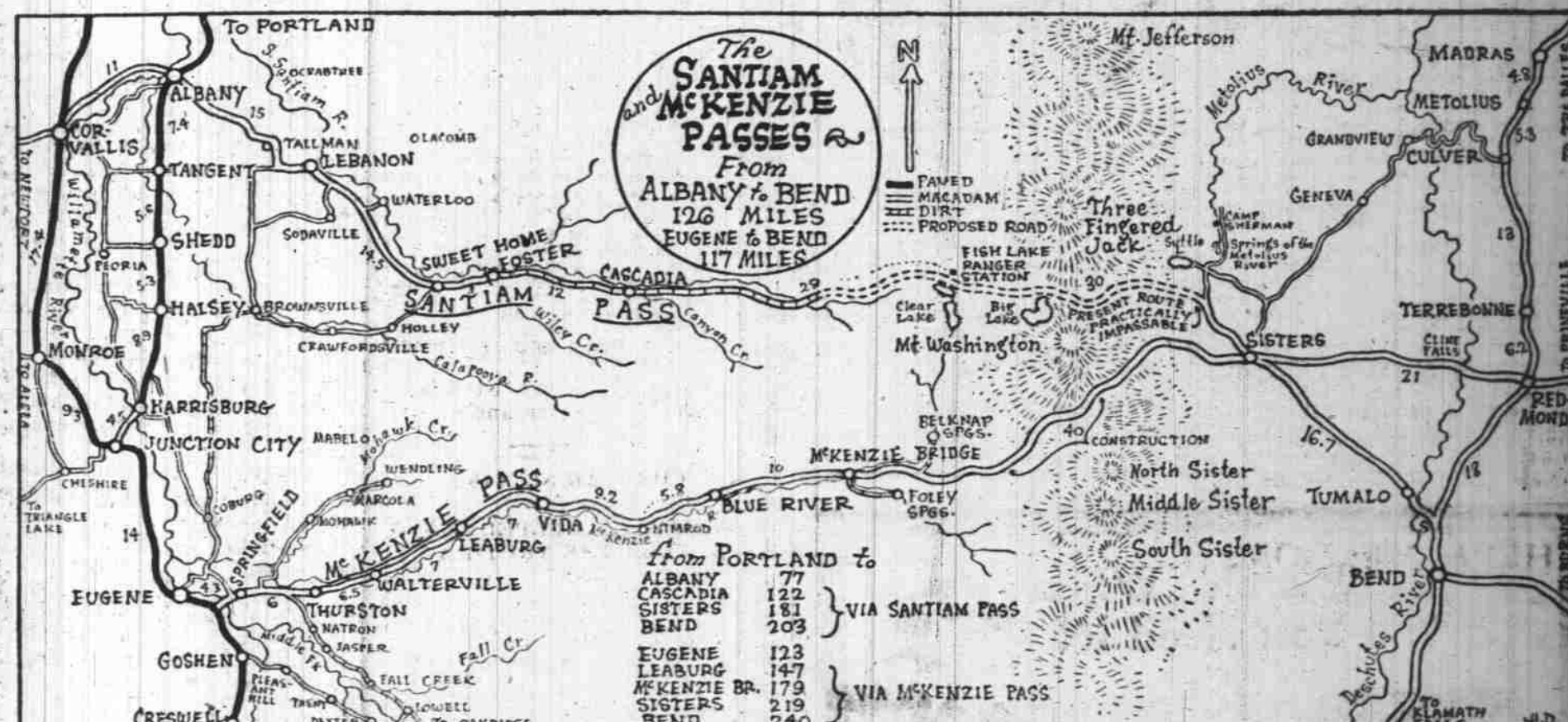


HAVE you your own home, or do you need help to plan your home? Are you paying out good money for rent and yet nothing for it but rent receipts? Let me give you my price on your new home. I do nothing but first-class work, and I am sure to save you money. I am doing it for others, why not for you? I will build any kind of a home you wish, from brick, tile, or stucco, and guarantee my work. I always have new homes for sale, 4, 5, 6, and 7-room homes, well built. I will be glad to show you some of these brand new homes ready to move in. As low as \$100 will move you in and the rest like rent. It will pay you if you are thinking about a home, to see me.

ADAM ENGEL, Builder of Good Homes

Phone 1337J

1420 N. 5th Street



Classified Ads in the Statesman Bring Results

VACATION NEEDS

IN COMPLETE ARRAY

Everything With Which to Make Your Trip Enjoyable

Beach Umbrellas

In black and orange or black and red. Made of heavy wind proof materials with rust resisting frame.

EASY TERMS

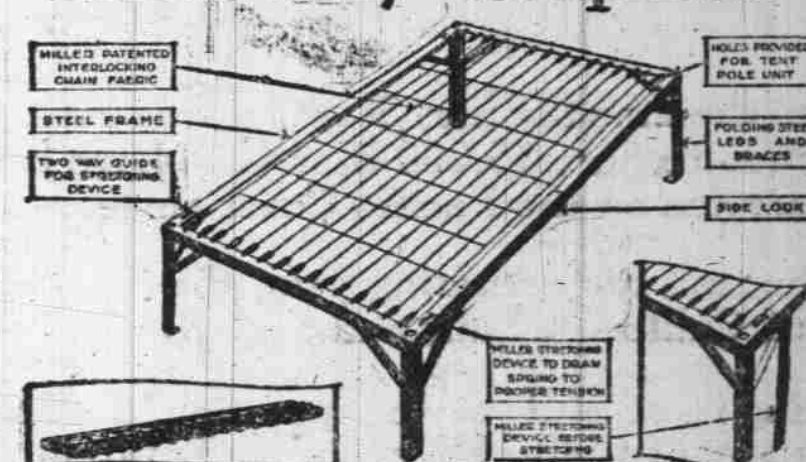
Garden Hose and Tools At Special Prices

RUBBER



50-ft. 1/2-inch cotton hose, \$440
was \$5.50, now
50-ft. 3/4-inch cotton hose, \$540
was \$6.50, now
50-ft. 1/2-inch red U. S. rubber hose, was \$7, now \$540
50-ft. 3/4-inch red U. S. rubber hose, was \$10, now \$800

Miller Cozy Camp Bed



\$12--EASY TERMS

TENTS-TENTS-TENTS

We made a dandy buy on a large number of

KHAKI AUTO TENTS

with heavily paraphrased tops, thoroughly waterproof. These tents are of 12-oz. material with roped eaves and gables. Each one is rolled and packed in a black water and dust proof sack.

7x7 was \$15.75
\$12.60
7x9 was \$18.75
\$15.00
Terms if desired

N. L. Stiff Furniture Co.
COMPLETE HOUSE FURNISHERS

The why of "Copeland service"

A J. W. COPELAND Lumber Yard is something beside a place where lumber is sold. It is an institution of service to the community. We aim to render that service by always offering for sale building materials of first quality backed by a strict guarantee and sold at the lowest possible price.

An order for lumber, either large or small, receives the same consideration. Deliveries are made when and where you want them.

If you want to deal with a "friendly" yard where everyone is interested in serving you well, COME HERE.

**Demand
"COPELAND QUALITY"
from your builder**

**J. W. Copeland Yards
LUMBER**

Salem Yard at West Salem
Phone 376

Six Yards in the Willamette Valley