



The latest improvement for your

FORDSON

Several farmers in this vicinity have installed these new, quick-firing magnetoes and report

**EASY STARTING
MORE POWER
LESS CUSSING**

We will be glad to show you this Bosch made especially for Fordsons.

E. H. BURRELL

**Overland Blue Bird
Is Lowest Priced Car
With Balloon Tires**

Willys-Overland's Latest and Most Striking Creation, Done in Peacock Blue, Capitalizes on Motor World's Latest Development.

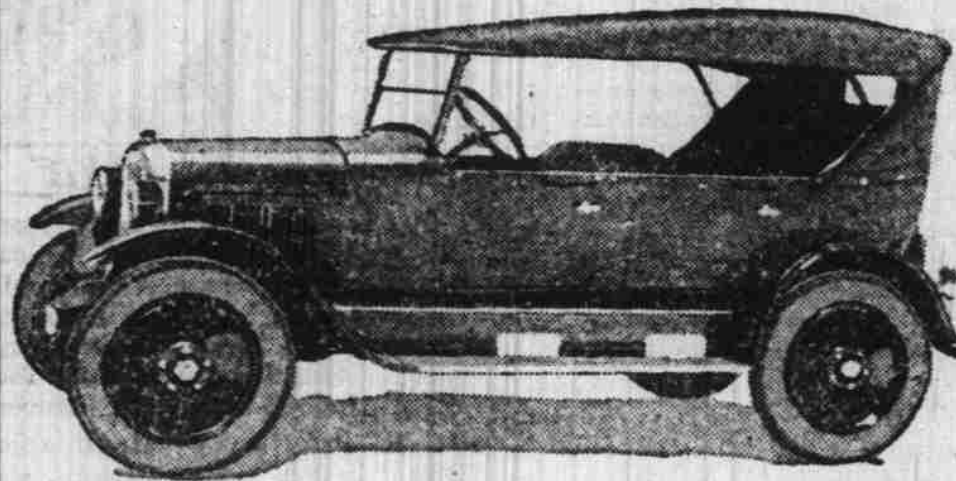
With public interest in balloon tires at its height Willys-Overland announces its newest model, the Overland Blue Bird, the lowest-priced motor car with genuine balloon tires furnished as standard equipment.

Those who have seen the car at its preliminary showings at the factory agree that the Blue Bird is the most striking design that

combines attractiveness with utility. The hue used on the new Blue Bird will stand up under the most exacting weather conditions and cannot be influenced by the summer sun or by winter's dampness and frosts.

A new standard in riding qualities has also been reached by the coupling of the patented triplex spring suspension with balloon

THE NEW OVERLAND BLUE BIRD



Above is the new Overland Blue Bird Equipped with Balloon Tires. Now on display at Vick Bros. Garage at High and Trade Streets.

has ever been produced by this organization.

The combination of a long, roomy body done in rich Peacock Blue, set off by black fenders and running gear, smartened by nickel-plated radiator, windshield stanchions and outside door handles; with upholstery of a bluish shade to match the body, and a top of similar hue, creates an appearance of spirit and sparkle that is entirely in keeping with its happy choice of trade name.

This new creation is another instance of Willys-Overland's endeavor to work steadfastly toward the end that beauty, utility and economy can be assembled in a single unit.

It is one more illustration of fine, well-bred coloring, which

tires. The wheelbase of the new car is 106 inches, giving it a spring base of 136 inches. The weight of each Overland spring is about 20 pounds. The material is chrome vanadium steel, carefully heat treated, having an elastic limit of 190,000 pounds. The springs are so designed and assembled in the chassis that all road shocks are absorbed with a minimum distortion of chassis.

Addition of genuine Fisk 31 by 5.25 balloon tires, which further cushion the road, positively guarantees utmost physical relaxation to the occupants of the car even over the roughest highways.

The power plant is the same that has made the entire nation gasp by its stamina and power in difficult road and mountain tests

in all corners of the country. Its repeated ascents of Motorcycle Hill in Arizona, its scaling of the meteor-glazed sides of Stone Mountain near Atlanta, Ga., are but two high points of a series of spectacular feats that have thrilled motoring circles during the past 10 months.

The cylinder finish of this rugged motor is remarkably thorough, the concluding operation being a lapping process that removes all roughness following the reaming operations. The engine base has a double bottom which increases its strength and rigidity and provides for the correct oil supply to all connecting rods under all road and grade conditions. Valves are made of specially selected material.

Clutch is of the single-plate disc type, smooth in operation, and completely encased, providing protection from dirt and grit.

Front axle is tested to an elastic limit of 75,000 to 90,000 lbs., with large king bolt bearings and wheel spindles. Cross rod link is of unusually heavy steel.

Rear axle construction is substantial and well assembled, with strong axle housing, 1 1/2 inch axle shafts of Molybdenum steel, Timken bearings on differential case and New Departure bearings in the center.

These important mechanical specifications, with its other up-to-date features, provide the new Blue Bird with the qualifications that make it a thing of animation, speed and comfort, which should readily win its way into the hearts of thousands of owners throughout the country.

**CHEVROLET SALES
SECOND IN CALIF.**

Since Jan. Chevrolet Sales in Second Place; Close to Ford in Oakland

Chevrolet ranks second in all California sales according to the Motor Registration News. During March in the 47 northern counties of the state the sales of the Chevrolet exceeded all other makes with the exception of the Ford. The nearest competitor of the Chevrolet was the Dodge which lacked 738 of equaling the sales of the Chevrolet. In the 11 southern counties during the same month the Chevrolet sales were second with almost the same lead as in the northern counties. The total sales of passenger cars in California since January 1, 1924 and the make of cars sold are as follows:

Ford	15,995
Chevrolet	7,219
Dodge	3,428
Studebaker	2,481
Buick	2,385
Star	2,280
Overland	1,236
Oakland	1,032
Jewett	987
Maxwell	961
Willys-Knight	931
Essex	928
Hudson	844
Nash	748
Oldsmobile	719

In the city of Oakland during the month of March the sales of the Chevrolet almost exceeded those of the Ford. When the figures were totaled at the end of the month it was found that there had been 263 Fords sold and 262 Chevrolets. The Dodge also held third place here with a total sales of 73 cars.

Old maids miss a lot of joy. They seldom get a chance to give anybody medicine.

**Performance Not Matter
Of Chance With Maxwell**

The records which Maxwell cars have made in the hands of owners ever since Walter P. Chrysler became directing head of the Maxwell Motor Corporation are no matter of chance, declares J. E. Fields, general sales manager.

The cars have performed as they have because high grade performance is built into them—because Maxwell engineers designed the car to be good.

"The smoothness of the powerful motor of the present series car, which was introduced shortly after Mr. Chrysler became affiliated with Maxwell, is the smoothness of sturdy, rugged construction and tough, enduring materials," says Mr. Fields.

"Its astonishing power flexibility is the predetermined result of carefully calculated balance, scientific carburetion and gas distribution, and the most painstaking workmanship.

"It is little short of amazing to learn that the good Maxwell has in it the same fine alloy steels that go into the high priced cars. In fact, more of the high grade steels are used in it than in many cars selling for three and four times the Maxwell price.

**STATESMAN
WANT ADS.**
The shortest distance between buyer and seller.

DAY IN AND DAY OUT

Day in and day out, Dodge Brothers Motor Car serves its owners faithfully and at low cost.

This is because Dodge Brothers have consistently built their product more staunchly than strict manufacturing practice requires.

Employing only the finest materials, they have insisted upon an exceptional margin of excess strength in every part that takes a major strain.

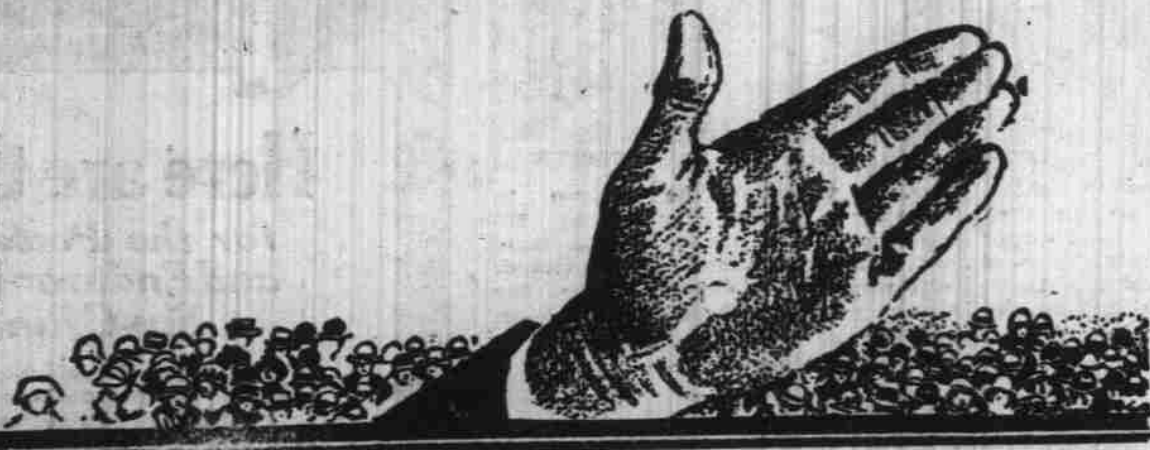
Touring Car \$895 f. o. b. Detroit;
\$1075 Delivered

Bonesteel Motor Co.
474 S. Commercial



"Furthermore, these fine materials are subjected to the most searching tests and inspection. Every part of the front axle, for instance, gets 100 per cent Brinell, or scleroscope test. That means not the mere testing of a sample lot of parts, but of every part axle components and valve assemblies. Even piston rings are tested for hardness, perfect alignment and concentric fit."

STOP!



CLASS TELEGRAM TIME FILLED
TELEGRAM CHECK
NIGHT LETTER
DAY LETTER

VERN ANDERSON,
Used Car Corner,
Can buy all nearly new Fords we want at our own prices. Been in town four hours—bought eleven. Will ship in few days. —ED.

To Clean Up

Before the next shipment arrives we will sell the following cars at greatly reduced Prices.

1923 Ford 4-door Sedan, has lots of extra equipment, cost new \$915; our price	\$600	1920 Ford Touring, in good condition	\$170
1923 Ford Touring, cannot be told from new, cost new \$550; our price	\$425	1919 Ford Touring, in good condition	\$145
1923 Ford Roadster, cannot be told from new; cost new \$500; our price	\$375	Your Fishing Car	
1922 Ford Touring, has cords all around, in best of condition	\$325	1918 Ford Touring, a dandy car	\$ 95
1921 Ford Touring, in best of condition	\$200	1917 Ford Touring, in good shape	70
		1916 Ford Touring, lot of good service	60
		1916 Ford Chassis, dandy for bug	45
		1918 Light Delivery, good berry job	75
		1917 Light Delivery, another berry car	65

90 Days Service on nearly new Fords

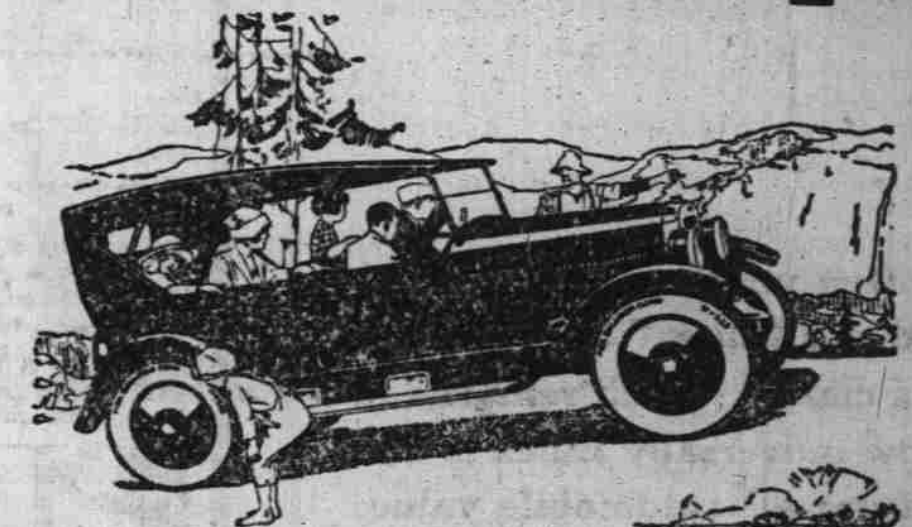
Used Car Corner

Open Evenings and Sundays

Ferry and Commercial

Opposite Marion Hotel

Announcing
An Artistic Triumph!



Lowest Priced Car with Balloon Tires Standard

ONCE more Overland opens all eyes with something much finer, greater, more desirable—the big new Overland Blue Bird—a beauty prize at a remarkably low price!

A longer wheelbase—a bigger, roomier body done in rich Peacock Blue, with harmonious Spanish long-grain upholstery. Nickered radiator, outside door handles, natural finish wood wheels—and genuine Fisk balloon cord tires! Disc wheels (5) optional at \$25 extra.

Robust power. Come in—see the Blue Bird—take a ride—you'll say it's as wonderful on the road as it is to the eye.

Big New
Overland \$725
BLUE BIRD

VICK BROS.
High Street at Trade