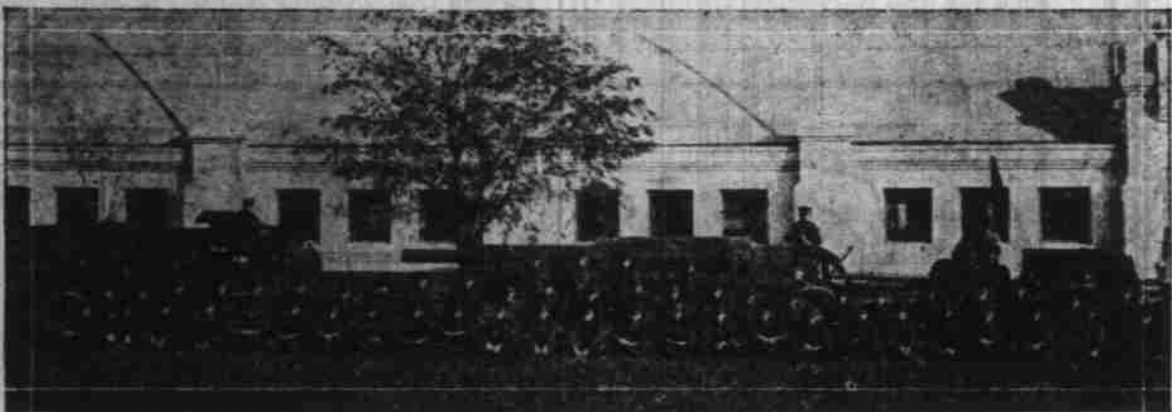


## Military Tournament Will Be Spectacular



O. A. C. Cadets with "Aggie Boy" their 155 Rifle. Preparing for Big Tournament.



O. A. C. Cadets Jumping Practice for Big Tourney.

Elaborate preparations are being made for the Tenth Annual Military tournament at OAC on May 26, under the direction of Lieutenant Patrick Henry Tansey, of the Engineer Corps. The tournament is given by the ROTC, which trains students for five major branches of the United States army service, infantry, cavalry, field artillery, engineers and motor transport corps. The program has been divided into three sections, a polo tourney and a military circus. The former will be played at 3 o'clock and the latter staged in front of the stadium beginning at 7 o'clock. Judges will be R. B. Rutherford, Michael But-

ler, R. O. Coleman and Robert Hager; Colonels D. E. Dentler, T. M. Anderson and Robert McLeave.

The polo tourney will be between the Portland Hunt club and the OAC cavalry team and will be in charge of Captain Glenn S. Finley.

The second phase of the tourney has been divided into three acts, with 12 scenes to the first act. The program will open with a military review and ceremony, in which all ROTC units will participate. This will be followed by a wall scaling competition, under the direction of Lieutenant Leo Clarke; an exhibition polo contest; a cavalry exhibition ride, a

tug of war, an artillery exhibition drill, infantry machine gun competition between the Corvallis national guard unit and the OAC infantry; a ladies' riding exhibition, rescue race, "fighting engineers in action," and the presentation of prizes.

One of the most spectacular sham battles ever staged at night in the Willamette valley will be held during night operations. This will be followed by a pyrotechnic display, which is heralded as one of the best fireworks display since the Panama-Pacific International exposition.

Many Salem people are already making plans to attend this tournament.

## A. A. A. APPEALS TO MOTORIST

Don't Destroy Nature Is Advice—Debris Dangerous

Prospects for a more satisfactory touring season for motor car owners were brightened this week when the American Automobile association issued an appeal to all tourists to refrain from any form of carelessness in their habits that might tend to desecrate the countryside.

According to Thomas P. Henry, president of the American Automobile association, the countryside must be kept attractive as an investment in touring satisfaction, and the tourist, he points out, has a direct interest in furthering the movement in each individual act.

The automobile has brought the countryside of America to the American people, but it must not hide it again under the litter of picnic debris, he declared.

Mr. Henry feels that the subject is far too important to be spoken of in anything but specific terms. Accordingly he has made the following definite requests:

"When you come to a beauty spot that has been wrecked by an earlier picnic party don't complain. See that you don't leave a similar sight for the motor tourist who follows you.

"A wildflower on the bush is worth ten in the tonneau, withered and trampled. Leave the flowers where you can enjoy them most. If motorists are to strip America of her foliage motoring will be stripped of one of its fundamental assets.

"Debris is dangerous. The careless smoker plus the littered picnic spot result in the forest fires that wreck the countryside, literally and figuratively. Bare hills encourage swollen streams and floods. Floods ruin the roads and lay waste the valleys."

### GARDNER'S STRENGTH SHOWN BY FINANCIAL STATEMENT

The financial statement for the year ending December, 1923, recently issued by the Gardner Motor company, Incorporated, of St. Louis, shows a net surplus of more than 10 per cent for the year after all liabilities, including 155,000 shares of outstanding stock, dealers' deposits and accrued liabilities such as war tax, etc., had been provided for. Current assets, including cash on hand, materials at cost, accounts receivable, buildings, machinery and equipment owned by the company, are more than forty times greater than current liabilities. The company has no commercial debts or bank obligations of any kind.

"Any man versed in finance," said Russell E. Gardner, formerly president and now chairman of the board of directors of the Gardner Motor Co., Inc., "knows that the only true method of gauging financial soundness is by comparing liabilities to liquid assets. And the statement just issued shows that the Gardner Motor company, Incorporated, has more than \$40 in resources against each dollar of obligations. To the best of my knowledge, no company in the automobile business is in a more sound financial position than the Gardner Motor Co., Inc."

"Our policy has always been to 'make haste slowly.' Operating on our own capital, and with no outside financial entanglements, we have been able to run our business the way forty years of manufacture experience indicate it should be run. We build a car upon which we are proud to put our name and sell it at a price which enables us to meet all competition and still bring us a profit over and above all expenses. We pay cash for all parts and materials, and produce our cars in large enough volume to get the benefits of quantity buying and quantity production. In this way, we not only earn substantial dis-

counts denied to the manufacturer operating on a long-time credit basis, but we are able to effect substantial manufacturing economies which enable us to offer the prospective owner of a car which is, we believe, unequaled at its price.

"Proof that the public appreciates this is shown by our production records for the first quarter of 1924. Though January was an exceptionally busy month, February production was 100 per cent greater than that of January and March production 110 per cent greater than that of February."

### SUPPLIES BOUGHT

Five hundred million lock washers were purchased in one year by one automobile manufacturing corporation in this country. Most of the European automobile manufacturers buy this small but important unit a few thousand or so at a time and pay the small quantity price. This same American producer purchases 375,000 tons of steel every 12 months. European manufacturers buy three or four thousand tons. This same condition obtains right down through the entire automobile manufacturing process. This is the reason why American made automobiles can be shipped abroad, pay a stiff import duty, and yet compete with foreign cars, according to R. K. Jack, chief engineer of the Olds Motor Works, Lansing, Mich.

"European manufacturers still continue to use hand instead of machinery methods and to buy in small quantities," said Mr. Jack. "Only cheap labor makes it possible for them to operate at all. Quantity purchasing and its use to the utmost by the two big outstanding producers in this country is almost incomprehensible to the European mind."

### TRAVEL REDUCED

A very large proportion of the auto traffic that was let through eastward lately at Yuma bridge passed Phoenix by on its way toward Texas, generally taking the cutoff along the Southern Pacific between Gila Bend and Casa Grande. Hence, no problems of relief have been known to the local authorities or have been reported at the office of the Automobile Club. Cross-country travel has been suspended almost entirely, though a few cars are passing on the way to the Coast, compared with about 100 a day a month before.

The weather man always keeps one more cold day in stock to use when you take down the stove.

## GASOLINE TAX IS COMPUTED

Figures for Month of April and Also for Recent Years are Shown

During the month of March the state tax on gasoline amounted to \$182,282.10, according to a statement by Sam A. Koser, secretary of state.

"Taxes were remitted on 5,807,949 gallons of gasoline and 352,379 gallons of distillate," says the statement. "Of the total collected the sum of \$59,841.40 resulted from the operation of the original law imposing a tax of one cent a gallon on gasoline and one-half cent a gallon on distillate, while \$122,440.70 was returned under the additional tax law providing for a uniform rate of two cents a gallon on all kinds of motor vehicle fuels."

"The February sales of gasoline represent an increase of approximately 22 per cent over the sales made during the preceding month, distillate sales having more than doubled."

"To date the motor vehicle fuels tax measures have brought to the state treasury the total sum of \$5,498,305.07."

"Of the amount collected under the law of 1921 there has been returned up to April 30 the sum of \$132,665.08 to operators of farm tractor, motor boats, commercial cleaning establishments, etc., pursuant to that provision authorizing refunds of taxes on such motor vehicle fuels as are used for purposes other than in the operation of motor vehicles upon the public highways. Motor vehicle fuels taxes are credited to the state highway fund, becoming available for expenditure in the construction and maintenance of state highways."

### Famous German Airman Killed in Peace Flight

KASSEL, Germany, April 7 (by mail).—Otto Linnekogel, the famous war pilot who recently broke his neck in a fall from a height of 90 feet, apparently was a victim of nervous collapse. He had not flown for six years, decided to take out a new pilot's license and met death on his first flight.

Linnekogel was extremely un-

easy and showed himself to be out of training when he entered the airplane. As the machine left the ground spectators were horrified to see him rise from his seat when the car was about 90 feet in the air, and jump out.

Linnekogel was one of the pioneer German fliers and created a great sensation in 1914 by flying to an altitude of 22,276 feet.

The reason grafters get quicker results than prosecutors is because they are not handicapped by laws.

## The Tire That Lasts Longer and Stands up Better

Before you buy new tires let us point out the exclusive features of superiority in a tire which is astonishing the motor world by its remarkable performance.

These great oversize C-T-C low inflation cords are hand-built of the best materials ever used in tire making, and under an improved design and more scientific compounding—making the sidewalls stronger to safely carry reasonably low inflation and "conserve the car", the tread tougher to withstand even crushed-rock roads, and the whole more durable to give greater mileage.

There is also a C-T-C hand-built Ballloon tire for extreme low inflation, which fits any standard wheel and rim.

C-T-C Tubes add mileage to almost any casing.

Marion Automobile Co.  
Salem Automobile Co.  
Valley Motor Co.  
Ira Jorgenson  
Vick Bros.  
Columbia Tire Corporation  
Factory Branch, 477 Court St.



## HIGHWAYS EAST FROM SPOKANE ROUGH AT PRESENT, REPORT

Highways east of Spokane are in poor condition at present due to snow or construction work, according to a letter received here from W. M. Flaherty, publicity secretary for the Spokane Chamber of Commerce, in response to inquiries regarding automobile travel.

"The Inland Automobile asso-

ciation of this city is advising all tourists who can possibly do so to hold over a few weeks before attempting to cross the mountains," the letter stated. "However, the national parks highway via Sandpoint and Thompson Falls is open but extremely rough. It is believed that this highway will be open to all travel by May 10th."

## QUARANTINE WILL EFFECT MOTORIST

Twelve Counties Now Closed By Quarantine Regulations

(From Los Angeles Times.)

More insistent demand came during the past week that all motorists refrain as far as possible from pleasure touring, owing to stricter quarantine regulations being placed in effect to stamp out the foot-and-mouth disease. Pleasure-seeking motorists, picnickers, hikers, hunters and anglers are finding all mountain road closed to them. In these districts only those making their homes there year round, or those having urgent business, are allowed to pass. The latter class must obtain permits from the horticultural department.

Hello! What Is It?  
The touring bureau of the Au-

tomobiles club has been deluged with inquiries during the past week relative to campaign regulations on leaving the county. There are now twelve counties closed by quarantine regulations, which means that they have had the foot-and-mouth disease within their borders. These are Los Angeles, San Bernardino, Kern, Merced, Mariposa, Stanislaus, Alameda, Contra Costa, Napa, San Francisco, San Joaquin and Salinas. At the borders of all of these are quarantine stations. These are closed to the motoring public from 6 in the evening until 6 in the morning, and due to only the main roads being open, there is of necessity considerable delay in getting through. The surrounding counties have served notice that pleasure motorists are not welcome so long as the quarantine regulations are in force. In Ventura county a five-hour fumigation for camping parties is imposed at the border. Motorists going there with camping equipment are advised to be fumigated at the county line, as previous fumigations will not be recognized, for the authorities are not satisfied with other processes than their own.

## Back-Yard Shrine, Erected by Syracuse Woman in Memory of Husband, Is Illuminated at Night



Aided by friends, Mrs. D. Sorrendino has erected an unusual shrine in the back-yard of her home in Syracuse, N. Y., in memory of her husband who died a few months ago. It is illuminated at night by both electric bulbs and candles.



Ride a Bicycle—and Live!

Too many of us keep our noses to the grindstone. We ride to work in crowded cars, eat cold lunches at the shop, get home late too tired to enjoy our evenings.

Did it ever occur to you that a bicycle will get you quickly and easily to work, home at noon for a hot meal, and early enough at night to enjoy some of the sunshine with your family, with healthful exercise that you would not have time to get in any other way.

Think it over—and then come in and let us tell you of our easy terms.

Harry W. Scott

"The Cycle Man."  
147 So. Com'l St.



Announcing

The New Home of CHEVROLET

We are now in our new building opposite from the City Hall at High and Chemeketa street.

In this new modern home we will be in a position to serve our patrons better than ever before and at the same time better display our line. Our service department and shop are located in the same building. We expect to have everything cleaned up and ready for your inspection in a few days. Watch for our announcement.



Newton-Chevrolet Co.

Opposite City Hall  
Phone 1000

