

JERSEY CATTLE LEAD THE WORLD

Three Gold Medal Bulls Head Willamette Valley Herds—Iliff, Powell, Mountain View Farm and McKee Have World Winners

Harry D. Iliff

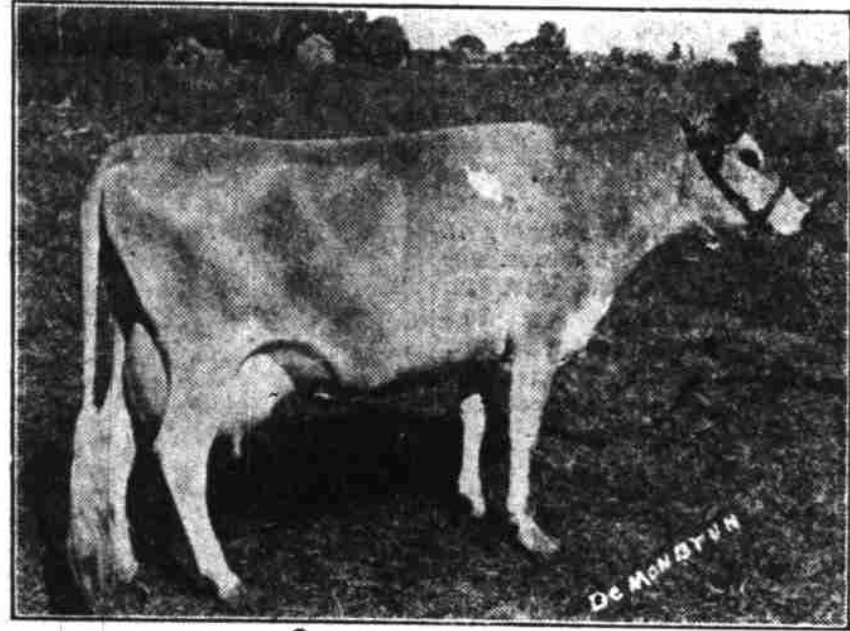
With a herd average of approximately 700 pounds of butterfat a year, the Jerseys owned by Harry D. Iliff, Independence, Oregon, occupies an enviable position among the Jersey circles. This average is computed at an average age of three years and three months. Included in this lot is St. Mawes Lad's Lady, 829 pounds fat. This is the world's record in its class. She started on this record before two years of age. Mr. Iliff also has St. Mawes Lad's Ruby, with a record of 708 pounds of fat, this ranking third in the senior yearling class; and St. Mawes Lad's Pride, 670 pounds, holding fourth place in the senior three-year-old class. Out of the ten highest senior yearling Jerseys in the world, Mr. Iliff owns four of them, including the world's champion.

Who says that a man in moderate means cannot own and develop good cattle? The above instance is but one of many to prove that this can be done. Mr. and Mrs. Iliff own a valuable farm about two miles south of Independence, on the main road. They have good, comfortable buildings, a modern house and a commodious barn, but nothing elaborate. The cow and the hen have done it. In addition to their herd of Jerseys they keep a flock of chickens, and the Jerseys and chickens have been furnishing the means of improving the place and making a living for the family.

A few years ago they had a nice little herd of grade Jerseys, but realizing that the possibilities were more limited with them than they would be with the purebreds, they started to gradually dispose of the grades and to replace them with registered cattle. The majority of the foundation stock is of Rinda Lad of S. B. Breeding. They also have a number of daughters of St. Mawes Lad. They purchased some of these daughters from G. C. Hewitt and soon after St. Mawes Lad had been purchased by S. J. McKee, they used St. Mawes Lad in their herd. Mr. Iliff later secured The Maori, a bull richly bred in the St. Mawes family, and much of his young stuff was sired by this bull. He was shown in 1922 at the Oregon State fair, winning grand champion, so it will be seen that they are developing their herd along the lines of "type and production" that is so desired by all breeders.

Meadow View Jerseys

One of the leading herds of Jerseys in the United States is owned near Turner, Oregon, on the Meadow View Jersey farm. The foundation for this herd was brought from Connecticut early in the year 1921. The Noble of Oakland blood predominates as a foundation. Five daughters of Tiddley Winks Noble were included in the shipment from Connecticut to their new Oregon home. The foundation sire, Tiddley Winks Noble, has only eight tested daughters. He died before any extensive use of him had been made. Yet with the handicap of only a few daughters, these daughters have qualified him for both silver and gold medals. Of the daughters that came to Oregon, four have won gold and four silver medals. These medal cows are all great show cows, one of them having won grand championship at the Oregon State fair, 1921, and at the same time was qualifying for gold medal. This group of medal cows also won first prize dairy herd at the Oregon State fair and Pacific International, two of the medal records were during the year of the cross continental travel, and they were in the show herd that year. The cow, Lady Tiddley Winks, whose picture is shown here, was also shown at Hartford, Conn., in 1917, winning junior championship and then again winning grand championship at the Oregon State fair in 1921. She has a gold medal record of 728.04 pounds, and also a



Lady Tiddley Wink, a 638-lb. Butterfat Jersey of Meadow View

silver medal record of 638.16 pounds, made as junior four year old. Another one of the great cows in their herd is Allena's Noble Lassie, with a gold medal record of 717.66. One of her sons was sold for \$1000 to head one of the noted herds in cattle-dom. Lassie also holds a class AAA record of 673.75 pounds. Another one of their cows holds a gold and silver medal record of 742.91 pounds, made as a four year old and a class AAA record of 532.61 pounds as a three year old. From the standpoint of high production and show quality, this is one of the outstanding herds.

S. J. McKee

We often wonder how many people realize that some of the greatest Jerseys in the world are owned right here at our very doors. It has become too easy for one to say that he has the best horse, sow or pig when really he does not intend to be taken seriously. These remarks are made so often that there is a tendency to discredit a statement made that "we have the best cow" when this statement is really based on facts. The little herd of purebred Jerseys owned by S. J. McKee, Independence, Oregon, contains a number of high record cows. Among them is one cow, Lad's Iota, with a record of 1048 pounds of fat. She held the world's record for Jerseys for butterfat for several months. She was later defeated, and the championship of the world is now held by Dickson's Jolly Lassie, owned by Pickard Bros., Marion, Oregon. Lad's Iota was sired by Rinda Lad of S. B., who is one of the three medal merit bulls in the world. A bull designated as a medal of merit bull is a bull who has sired three daughters from separate dams that have each produced 850 pounds of fat or more within twelve months and have carried a living calf 155 days during test. Rinda Lad of S. B. and Holgar are full brothers. Each of these bulls have daughters whose performance has qualified them for medal of merit records. These two bulls and one other that was owned in the far east are the only three bulls that have ever qualified for such honors, so it can be seen that the exceptional performance of McKee's herd is not a mere accident. They have been bred for it. Mr. McKee is an expert dairyman. Several years ago he had a herd of grade Jerseys. He developed them until they were outstanding good ones, but he realized that he could not obtain his ambitious with the grade cattle, so he had an auction sale and disposed of the grades and proceeded to buy purebred cattle. In fact, he had a number of purebreds before the sale. The quality of his grade herd can best be illustrated by reciting the fact that one of his two-year-old grade heifers sold at auction for \$262.50.

In addition to Lad's Iota, he has a number of other exceptionally high record cows. Among them are Lad's Little Pauline, 941.59 pounds fat, class AA; Betty's Lady Fern, 860.56 pounds fat, class AA; and Le Belle's Girl, 901 pounds fat, class AA. Class AA indicates that the cows carried a living calf at least 155 days during test. His herd bull is St. Mawes Lad, and he is a gold medal bull. A gold medal bull is defined as a Jersey bull who has sired at least three daughters from separate dams, each having produced 700 pounds or more of fat and having carried a living calf the required time. St. Mawes Lad is the only bull in the world who has qualified for a gold medal with his daughters on test with their first calves. The McKee farm is about three miles south and one mile east of Independence. The above facts prove that he has one of the greatest herds of Jerseys in the world. Now, the interesting part of it is that certain conditions have come up that makes the dispersal of this herd necessary. They will be sold at auction at some date early in June. Never before has there been a cow with the record of a thousand pounds or more been offered at auction; in fact, there are only a few of them in the world. This sale will

include this great ex-world record cow, the gold medal bull, and a number of medal of merit cows and the offspring from this combination. Certainly this is the opportunity for the breeders of the world to secure some proven breeding stock.

P. O. Powell

The Orchard Farm lies some four or five miles northwest of Monmouth and is owned by P. O. Powell. As the name implies, the orchard occupies a part of the farm. The balance of the place is used largely in connection with the raising and maintaining of a fine dairy herd of purebred Jerseys. The foundation for this herd is largely St. Mawes—Rossire's Olga Lad breeding. Among the foundation cows is Poppy's Olga. She is one of the gold medal daughters of Poppy's St. Mawes. She has several records, among them being the gold medal record of 790.29 pounds of fat made at the age of five years and six months. She carries 50 per cent the blood of St. Mawes Olga Lad and 25 per cent the blood of St. Mawes. Their senior herd bull is also of Rossire's Olga Lad—St. Mawes blood lines, and they are now using a son of Poppy's Olga, sired by the senior herd bull as a junior herd sire. This will result in an ideally fine bred herd. They have done a considerable amount of official testing on their farm, and most of their cows have creditable E. of M. records. Most of the care and direction in the

employees, and every thing is done that will make life on the farm an endless succession of interesting and enjoyable features.

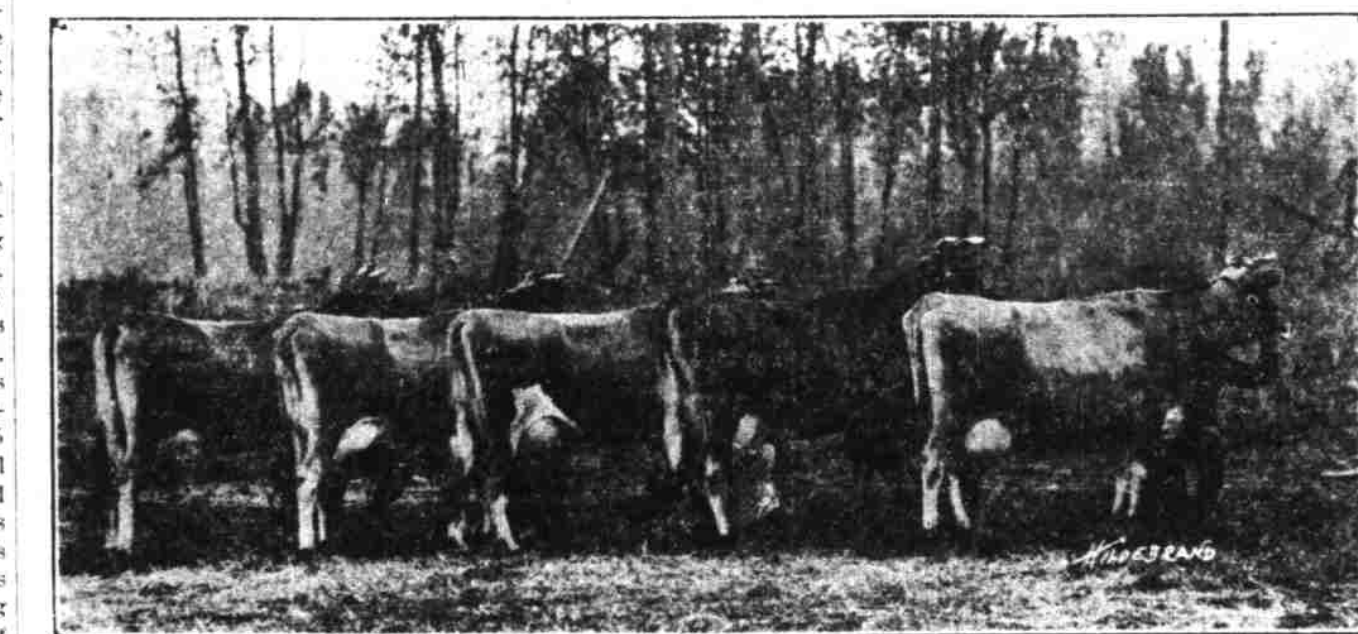


Mr. and Mrs. Powell and "Friend"

breeding and feeding is handled by a son, Frank Braxton, who is a graduate of the Oregon Agricultural College, and is well informed in pedigrees, feeding and the science of breeding. The selling is largely under the direction of the father, P. O. Powell, who has a large acquaintance among the farmers throughout the state of account of his activity in public work, he at one time being a member of the legislature from Polk county. He is now serving his tenth year as master of the Polk county Grange and has served as president of the farm bureau from the time it was organized. As a family, they are most progressive and have high ideals they want to work to help with the advancement of the farm industry, and for better livestock and better farm conditions.

Parker Bros.

One of the breeding establishments of more recent origin is that owned by Parker Bros., Monmouth, Oregon. A very few years ago they moved to the Monmouth neighborhood to engage in farming, and chose the breeding of Jersey cattle as their specialty. At that time they were not experts in this work, but they certainly made a mighty good start, as one of the first cows they purchased was St. Mawes Majesty Boss, she of Poppy's St. Mawes origin on her sire's side. She had a creditable R. of M. record when she was purchased from McArthur and Stauff, and was again placed on test and made a world class record in the 305 day division. This record has since been defeated. They have a number of excellent cows and their herd sire is from Helma of Ashwood, the 903 pound daughter of Holker. With this combination it will be seen that they will soon have one of the leading herds in the valley.



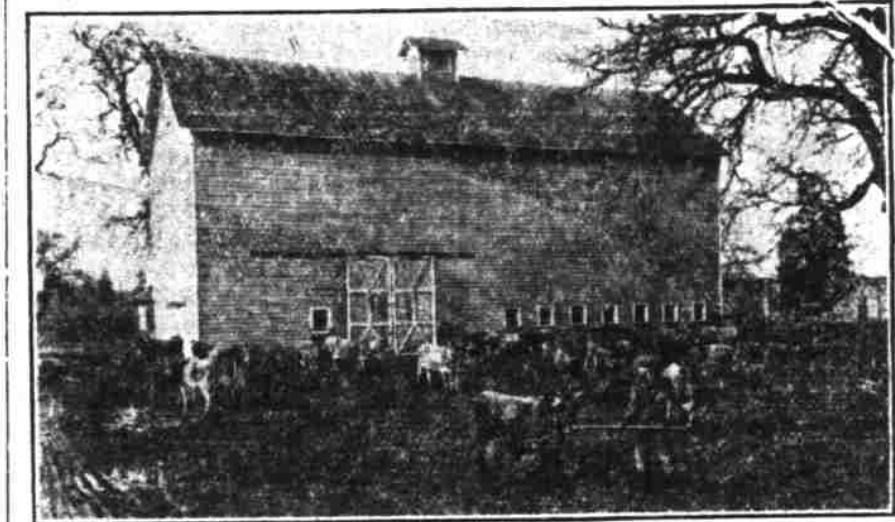
Production with Type—They Go Hand in Hand on the Loughbary Farm

Frank Loughbary & Son

One of the pioneer herds of Jerseys in the Willamette valley is that owned by Frank Loughbary, Monmouth, Oregon. Jerseys from the Luckiamute Farm have played an important part in the foundation for many of the more recent herds. They were recognized as one of the best from the standpoint of cream returns. This was before the days of official testing and register of merit records, cattle from this herd have been shown from time to time at the leading shows in the Northwest, always well up in the winning list at the top. As time went on,

Robison Dairy Farm

One of the most thoroughly equipped and highest developed of the many dairy and orchard farms in Willamette valley is the Derry Orchard Farm, on the highway nine miles west of Dallas and six miles east of Salem, owned and operated by S. H. Robison. The farm, consisting of 390 acres with approximately 300 acres in cultivation, has sufficient timber and pasture to meet the needs of such a place for many years. The raising of oat hay, vetch, wheat, corn, kale and beets will give a diversity of stock feed. Practically all of the work in the fields is done by motor tractor power and the two men employed the year around, besides the home help. Homes of the most modern type are furnished the families of



View of Robison Dairy Barn—The Cows Appreciate a Good Home

Robison Dairy Farm. The cows appreciate a good home.

Not alone are Jersey cattle plotted but registered Cotswold sheep, purebred single comb white leghorn chickens, and purebred turkeys are raised. Mr. Robison says that "the best is no more expensive than the worst, in the long run." It's a good policy and its adoption by many of the Willamette valley farmers has had much to do with establishing the records that the valley claims for the best in the world. As a whole diversity of crop and produce is exemplified to a high degree on the farm. In the orchard will be found walnut, filbert, cherry, apple and prune trees. This farm is truly one worthy of comment and applause.

THE PRESENT IS THE PROPER TIME TO EXPAND IN DIVERSIFIED FARMING

In my opinion the present is the proper time to expand in diversified farming. In the early pioneer days, we had to raise stock, grain, or something that was not perishable for transportation was slow and difficult and the markets for surplus products distant. Now we have fully demonstrated the fact that western Oregon's favorable climatic conditions and her varied soils insure prolific crops, adapted to such sells. Our highways, canneries, motors, insure speedy and safe transportation of our products. Our rapidly growing population, if properly utilized can succeed in harvesting those crops and thereby give a margin to the farmer, wages to the laborer, and an uplift to our great state. The chain of diversified crops should be rotary as to the annual products with the view of retaining the fertility of the soils. Clover fields may be next planted to potatoes or corn, followed by wheat, then oats, then clover for two years, or seed or hay, and so on. Permanent crops as orchards, berries and hops should be grown so as to follow in a chain of harvest work. Gooseberries followed by strawberries, then loganberries, raspberries, peaches, plums, plums, evergreen blackberries, hops, pines for the drier, apples, and potatoes, make a fairly complete chain of harvesting industries, including the hay and grain crops. Care should be taken to have the harvest crops requiring the greatest number of hands to be on, as far as possible, during the vacation of schools and other help from our cities and towns. Right here I may say that at this highly important period of harvest work, when such all important crops as hops, plums, blackberries and other fruits, about the first of September there should be a hearty cooperation between such farms and our large cities and towns, to not desert the farmer in this all important season, that his crops may not perish, and his hopes and efforts be blighted. (Personal to the editor): That I may be more fully understood, I submit a brief list of the chain of industries we consider practical with us. —W. H. E. Average of Mountain View Farm and old home Marion county farm 510 acres. Other land formed 140 acres. Livestock—Horses, 14; cows, 16; calves, etc., 20; sheep and goats, 50; hogs, all sizes, 50 to 100; poultry, 200.

the barn and a heating plant built in and a part of the barn proper furnishes an ideal cream and milk room.

But withal, one of the real features and the base upon which the success depends is the famous purebred Jersey herd headed by St. Mawes of Rickreall. The St. Mawes strain is one of the most admirable in the country and has among its members world record producers. Thirty two purebred Jerseys are now on the farm and this fall will find some of the finest representatives on the market, but plans for larger barns will take care of several head more.

Information concerning the famous St. Mawes strain will be furnished upon request. It may be stated here also that this blood strain has been a money line of the highest type both as ring win-

Derry Orchard Farm

S. H. ROBISON



Breeder of

Registered Jerseys

Poppy St. Mawes Strain

Registered Cotswold Sheep

Single Comb White Leghorn Chickens

Phone: Dallas 6X45 RICKREALL, OREGON

Luckiamute Jerseys

To Be Dispersed

Early in June

Date to be announced later

Daughters of Rinda Lad of S. B.

A Medal of Merit Sire

The largest group of daughters of a Medal of Merit Sire ever offered at auction—All Medal Winners

Also

Daughters of St. Mawes Lad

He a World's Record Sire

Entire dispersal No reservations

U. S. ACCREDITED HERD

Frank Loughbary & Son, Monmouth, Ore.

SUNNY LEA FARM

Jerseys

SHOW QUALITY R. OF M. RECORDS

Home of St. Mawes Lad's Lady, 829 lbs. fat—world's record senior yearling—and other high record producers. Herd headed by The Maori, grand champion, Oregon State Fair 1922, rich in the blood of St. Mawes and other producing families.

A young bull from this herd would be a guarantee that your future herd would be profitable producers of desirable conformation.

Visitors welcome at the farm, two miles south of Independence

HARRY D. ILIFF

Independence, Oregon

Hops, 60 acres, in Marion county. Potatoes, 20 acres; corn, 20 acres; cabbage, 1 1/2 acres; kale, 1/2 acres. Wheat, oats and hay about 250 acres. Fruit—Peaches, pears, plums, plums, apples, 40 acres. Berries—Gooseberries, strawberries, loganberries, evergreen, 40 acres plus. —WM. H. E.

(Wm. H. Egan, the writer of the above, is one of the best qualified men in the Salem district to speak upon the subject of the expansion of diversified farming here. He has done it and is doing it. Associated with him in his operations are his sons, A. J. and Homer W. Egan. Their letter-head reads: "Mountain View Farm of Marion county, Oregon. Wm. H. Egan & Sons, Proprietors. Growers of Livestock, Hops, Vegetables, Grain, Fruit and Berries. Postoffice Address, Gervais, Oregon, Route 2; Telephone 5F11." Mr. Egan was formerly county clerk of Marion county, and he has for many years been a leading figure in all the activities looking to the upbuilding and welfare of this part of Oregon. Homer W. Egan served his country in the air service in France during the World War.—Ed.)

Mountain View Farm

General Farm Crops

Sellers of Livestock, Fruit, Potatoes and other farm crops

Visitors welcome at the farm, 8 1/2 miles north of Salem on the Salem-Champoeg road.

WM. H. EGAN & SONS
R. F. D. 2, Gervais, Ore.

MEADOW VIEW JERSEY FARM

HOME OF

Gold Medal Show Winners

This herd has been distinguished as having many medal production records and these same cattle winning repeatedly in the show ring, one of our cows having won grand championship on both coasts (Hartford Connecticut 1917, and Oregon State Fair 1921) and qualified for a gold medal record. A group of our medal production cows won first prize as dairy herd at the Pacific International and Oregon State Fair.

If you want to secure both type and production, secure foundation Jerseys from this farm.

MEADOW VIEW JERSEY FARM

Turner, Oregon

Farm 1 1/2 miles west of Turner. Salem phone 33F4

ORCHARD FARM

HOME OF

REGISTER OF MERIT JERSEYS

St. Mawes-Rosaire Olga Lad Blood Lines

The combination of these two families have proven the highest producing of the breed. Herd headed by Gwendolyn's Poppy's St. Mawes, sired by Gertie's Poppy's St. Mawes and out of Gwendolyn Rosaire. R. of M. record, 919 pounds butterfat, the highest producing daughter of Rosaire Olga Lad. Cows in herd include the Gold Medal cow, Poppy's Olga, 794 pounds butterfat, and other high-record cows.

Special For Sale

A young bull just ready for service, dam, Poppy's Olga; sire, Gwendolyn's Poppy's St. Mawes. This bull is of desirable conformation and well bred enough to head any herd. Write for details.

P. O. POWELL & SON, Monmouth, Ore.