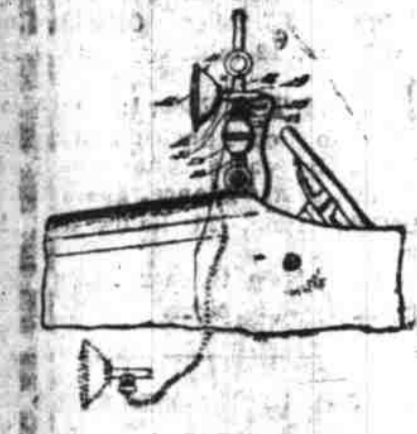


Latest Patents of Interest to Motorists

Recently Granted by U. S. Patent Office

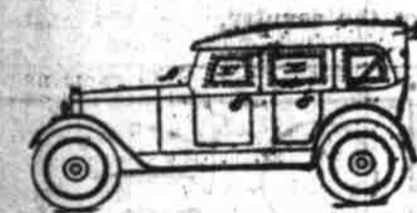
Compiled by CLARENCE A. O'BRIEN, Registered Patent Attorney, Washington, D. C.

1,479,578. ADJUSTABLE EXTENSION SPOTLAMP. Ernst G. K. Anderson, Chicago, Ill., assignor, by mesne assignments, to Appleton Electric Co., Chicago, Ill., a Corporation of Illinois.



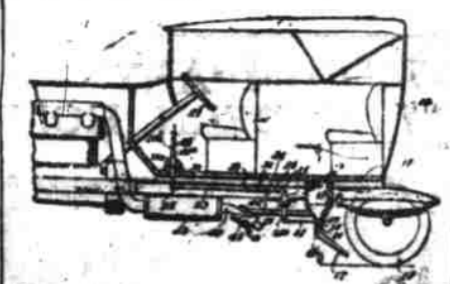
1. An electric extension lamp device comprising a lamp structure to receive lamp bulb contacts and two circuits separately including said contacts and provided with sockets separately to receive a connection of an external circuit, one of said circuits including an extension conductor cord.

1,479,308. WINDOW FOR VEHICLE CURTAINS. Arthur Maack, Detroit, Mich.



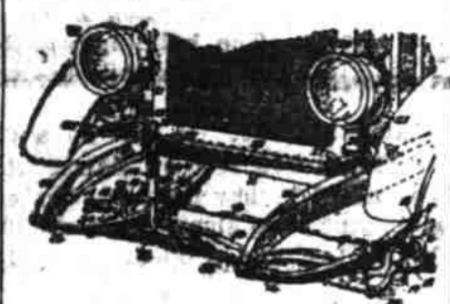
1. In a device of the character described, the combination of a curtain provided with a window opening, a window frame secured to the curtain, a sheet of glass fitted to the frame, a plurality of corner members comprising two co-operating plates spaced apart to receive the corners of the glass, one of said plates having flanges adapted to overlap the edges of the glass and also a projecting tongue provided with an aperture for the passage of a bolt, one of said plates being adapted to be bent to overlap its co-operating plate, whereby the glass may be secured between the plates of the corner members, and a bolt extending through the tongue and window frame to secure the glass against displacement.

1,479,238. SANDING DEVICE. Edward Hirsch, New York, N. Y.



2. A sanding device for motor vehicles comprising a sand container adapted to be secured to the vehicle, a delivery spout extending from said container and disposed in front of the rear wheel of the vehicle, said container being of double walled construction so as to provide an air space, a connecting tube in communication at one end with said air space and at the other end with an air chamber surrounding the exhaust pipe of the vehicle whereby the air in said air space is heated by the exhaust gases passing through said exhaust pipe.

1,479,438. LAMP-OPERATING MECHANISM FOR AUTOMOBILES. Amico Michael Purchio, Buffalo, N. Y.



2. A lamp operating mechanism for automobiles comprising a main frame, lamp brackets pivoted on the main frame, steering knuckles pivoted on the main frame, and means for connecting and disconnecting said steering knuckles and lamp brackets comprising bracket arms arranged on said knuckles, an upper bar connecting said bracket arms and provided with an opening, a lower bar connecting said knuckle arms, a standard mounted on said lower bar, a coupling rod composed of upper and lower pivotally connecting sections, said upper section being adapted to engage with said opening and said lower section being slidable vertically on said standard, and a screw nut arranged on said coupling rod and adapted to move lengthwise thereof for locking the same against folding or permitting the same to fold.

1,479,372. NON-SKID DEVICE. LeRoy C. Cook, Dear River, Minn.



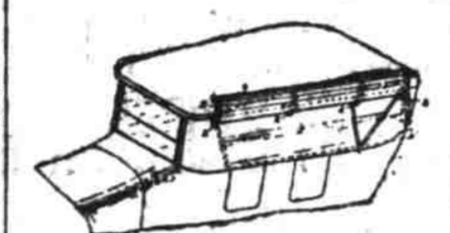
1. A non-skid shoe of the class described including a curved body, a pair of plates at the ends of the body including diverging extensions at their inner ends, and a rib mounted on the outer face of the body between the plates, the outer edge thereof being straight and flush with the outer edges of the plates.

1,479,068. INNER TUBE FOR THE TIRES OF VEHICLES. David Jacob Hammer, Pittsburgh, Pa., assignor of one-half to James H. Finn and James McEwan, both of Pittsburgh, Pa.



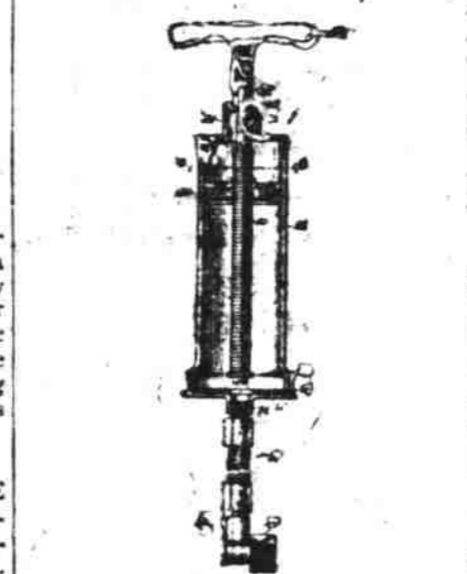
2. An inner tube for vehicle tires including inner and outer sections equipped with co-acting marginal edges, and resilient means connecting the edge of one of said sections.

1,479,400. SIDE CURTAIN FOR VEHICLE TOPS. Lonny H. Sammons, Houston, Tex.



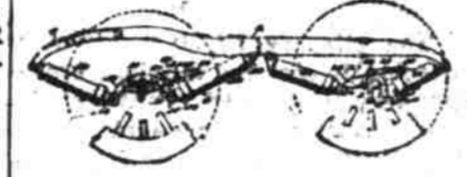
3. The combination with a vehicle top, of arms pivoted to the side of said top to swing in vertical planes, spring joints at the pivots of said arms to retain said arms automatically at any adjusted angle relative to said top, each arm being separately adjustable, and a curtain supported on said arms.

1,479,219. GREASE GUN. Carl Bramani, Chicago, Ill., assignor to Accessories Manufacturing Company, a Corporation of Illinois.



2. In a grease gun, the construction of a barrel of out of round cross section and having one closed end, a substantially cylindrical threaded extension adjacent to the opposite end, a delivery cap secured to said threaded extension, a threaded stem swivelled in the closed end, and extending longitudinally in the barrel, and a plunger engaged with said stem and slidable in the barrel.

1,479,478. SPRING SUPPORT FOR VEHICLES. Herbert Olof Dixon, Rockford, Ill., assignor to The Bedwell, a Partnership consisting of Thomas A. Bedwell and Clarence A. Bedwell, Rockford, Ill.



1. A spring support for vehicles comprising in combination with a body-supporting member and an axle, of a spring toggle between said axle and said member supporting the latter on the former, said spring toggle comprising a front and a rear unit, each unit consisting of a pair of telescoping tubes and an interposed coil compression spring, the tubes of each unit being pivotally connected at its ends to said member and axle, and a tie-bar acting between said axle and member in a plane substantially coincident with the pivot axis of the front unit on said member.

Buick Makes Steady Progress with 4-Wheel Brakes

"The character of reports coming to us through our representatives in attendance at the Paris and London Automobile Shows are quite in line with the highly satisfactory domestic situation and are, from a sales standpoint, distinctly encouraging," says E. T. Strong, General Sales Manager of the Buick Motor Company.

"To learn that there is nothing of mechanical or body design on European products that can be regarded as an essential advance over features that the current Buick possesses, emphasizes anew the soundness of our position in the market.

"To learn, furthermore, that leading Buick characteristics, such as Valve-in-head motor, forced feed lubrication, torque tube drive and four-wheel brakes, are duplicated on most of the higher priced foreign cars is, it seems to me, a striking vindication of the judgment of our engineers.

In some cases only certain models (the better and more expensive ones) are equipped with four-wheel brakes. For instance, the Vauxhall 30-98, the largest and most famous of the three Vauxhall chassis, is the only one with four-wheel brakes as standard equipment.

STAR CARS SHOW BIG IMPROVEMENT

Many New Features of This Car Help to Make it So Popular

Calculated to swing still more widespread popularity toward the already captivating line of new Star car models is the announcement of the new Star Sport model touring car, which is on display throughout the Star dealer organization this week.

Not content with the great increases that have already marked the debut of radical changes in design of the new Star, the factory heads are confident that Star will become even wider known through the new cars, which are being shown here by the Salem Automobile company.

"The new cars embody all of the mechanical features which have helped Star build up such a splendid performance record," declares F. G. Delano.

"But the finish and coloring used in building them marks them immediately as in a class all by themselves when sport cars are in discussion. There is certainly no factory production job in its class, and it is certain to meet with the stent favor of motorists who are looking for a car of its style and size."

The new Star sports are finished in two colors, and are highly dressed up with finely finished nickeling work on such parts as the radiator, which make them stand out very strongly. The two colors are rich maroon, and the distinctive radio blue. With a foundation of such color to insure instant attractiveness, the bodies have been strengthened with a stronger grade of metal.

As in all of the new Star models the control of throttle and spark has been moved to the steering column, and easier riding qualities are noted in all models. The tubular backbone, a Durant feature that has become one of the outstanding efforts of the automotive industry in the past two years, is also used in the Star sport models.

In short, said Mr. Delano, the sport models embrace mechanically all of the 24 changes that have been effected in both body and mechanical design that are noted in the new Star models recently announced by the factory. Already a number of people have seen the new sports in Salem and enough orders taken before the public announcement to make the sales force here enthusiastic over the newest addition to the line.

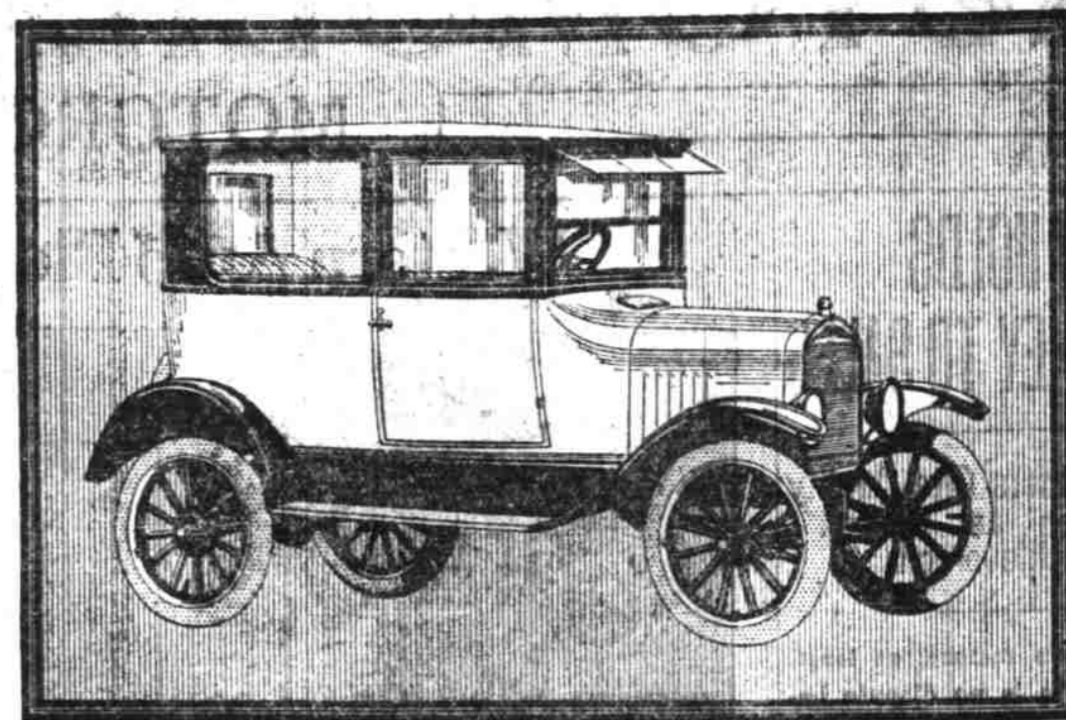
Mr. Delano declared that a great many people who had already seen the Star models and had taken demonstrations with evident satisfaction at the performance records of the line, and that alone is enough for a local dealer to base his assurance of a ready sale of the cars in Salem and vicinity.

CHINESE CLERKS CAN'T KEEP WARM

(By The Associated Press) (By Mail) PEKING, Dec. 2.—The "financial wretchedness of the ministry of education has reached the limit," according to a local newspaper, which avers that the ministry cannot even keep its employees warm.

It has stoves, but no money to repair them or buy fuel. The employees are driven into the smallest rooms of the building, where they huddled together to keep warm. Even the consolation of hot tea is denied them, for the ministry servants no longer have money to buy this luxury.

A New Body Type



THE Tudor SEDAN

F.O.B. DETROIT **\$590** FULLY EQUIPPED

The Tudor Sedan is a distinctly new Ford body type, admirably designed for harmony of exterior appearance and excellence of interior comfort and convenience.

At \$590, its price is not only lower than any previous Ford Sedan, but lower than any sedan ever put on the American market.

Body lines, long-panel rear quarter windows, broad cowl and high radiator give it grace and poise from every angle.

Wide doors, hinged to open forward, folding front seats, well spaced interior, dark brown broadcloth upholstery and attractive interior trimmings add measurably to its individuality, comfort and convenience.

See this exceptionally desirable new Ford product in Ford showrooms.

These cars can be obtained on the Ford Weekly Purchase Plan

VALLEY MOTOR CO.

264 N. High.

Phone 1995



CARS · TRUCKS · TRACTORS

PAY WOULD NOT BUY SHOE SOLES

(By The Associated Press) (By Mail) AUGSBURG, Bavaria, Dec. 22.—St. Ulrich's church clock marks time no longer, and its historic chimes no more sound the hours for this old city. Mesnor, the sacristan, has struck. He was paid only 2,900,000 paper marks from April to September for his services. As he had to climb 162 steps daily to keep the clock wound up, he said his wages fell far short of buying the shoe soles he wore out on the rough old stone steps to the belfry. So he quit after 50 years of service to search for more profitable employment.

WILLYS-KNIGHT SEDANS ARE ALL-YEAR CARS

The closed car, with its comfort features, is no longer a distinctive winter car, but is now accepted as an all-the-year-around automobile by motor car buyers everywhere. Realizing this, the engineers who designed the new models for the

Willys-Knight five and seven passenger sedans have added innovations which make these models very attractive.

The chief improvement in design lies in the longer, freer lines, sweeping back from the radiator. This change gives the car a more fleet and racier outline and pleases those who delight in trimness. The windshield, with a lower division that swings open for ventilation, has a metal sunshade and a windshield wiper. The clock, speedometer, oil gauge and switches are grouped on the instrument board.

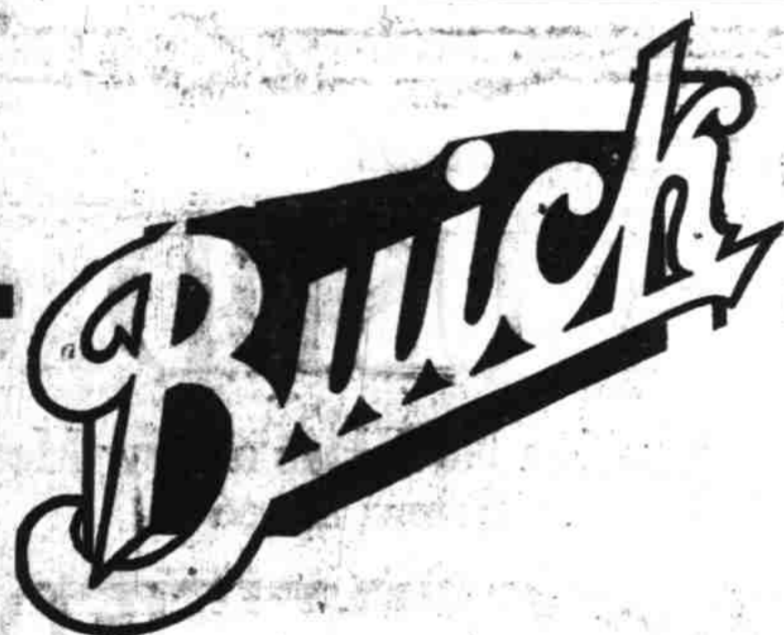


Rare beauties and distinctions in lines, finish and upholstery—and the great mechanical luxury of an engine that *actually improves with use!* The wonderful Willys-Knight sleeve-valve engine is the same type of engine used in the finest cars of Europe. See the Willys-Knight—go for a good ride!

Wick Brothers

QUALITY CARS TRADE AT HIGH

WILLYS KNIGHT



According to a Cosmopolitan News Service Bulletin from New York, four wheel brakes are exhibited as optional or regular equipment on the following models in the New York show:

- | | | |
|-----------------|-----------------|--------------------|
| Anderson | Elgin | Packards Sixes and |
| Apperson | Gardner | Eights |
| Auburn | Haynes | Peerless |
| Buick Fours and | Jewett | Pierce Arrow |
| Sixes | Kissel | Princeton |
| Chalmers | Locomobile | Rickenbacker |
| Chrysler | McFarlan | Rollin |
| Cadillac | Marmon | Rubay |
| Davis | Moon | Stutz |
| Duesenberg | Oakland | Templar |
| Elcar | Paige | Velie |
| Jordan | Wills Ste Clair | |

The dispatch fails to state whether mechanical or hydraulic brake is used.

The fact remains however that the list of makes adopting the four wheel braking system is growing rapidly.

Who's next? St. — We don't know.

Otto J. Wilson

328 N. Commercial

Phone 220