

GEORGE W. EOFF PASSES AWAY

Native of Marion County
Summoned at Age of 75
—Funeral Wednesday

George W. Eoff, 75, a native of Marion county, died at his home here Sunday. Until the last three years he had lived on his farm near the city on the penitentiary road. Mr. Eoff's parents crossed the plains to Oregon by ox team in 1847, and the following year he was born, September 19, 1848. He is survived by two sons, A. I. Eoff of Salem and G. O. Eoff, who lives on the farm east of Salem. Mr. Eoff was an uncle of T. T. Geer, former governor of Oregon. The funeral will be held Wednesday at 2 o'clock from the Rigdon chapel, with interment at the mausoleum. Rev. F. W. Launer will officiate.

WHITE PRAISES OREGON SOLDIERS

(Continued from page 3.)
M. 162nd infantry, was cited by General White as typical of the Salem men. Mason was awarded a DSC for leading a patrol of 40 men through the woods under heavy shell fire near St. Georges on October 22, 1918. Though wounded, he refused to leave, and continued to advance, the patrol succeeding in occupying the area. General White was introduced by Col. Carl Abrams. A particularly fine man had been prepared while Miss Florence Pope spent several hours Sunday afternoon in preparing home made candy and in decorating the rooms. As a token of appreciation and a Christmas present, \$25 was raised and divided among those who had charge of the lunches.

Commission's Contentions Are Upheld at Washington

Contentions of the Oregon public service commission have been upheld in all important respects by the interstate commerce commission in the interstate wool rate case, according to a statement made public by the Oregon commission.
"While the final order of the commission has not yet been entered," says the statement, "preliminary analysis reveals that the Oregon commission's contentions have been upheld on all important features. This is especial-

ly true in respect to reductions recommended for westbound shipments of wool from Oregon shipping points through Oregon ports. Upon this point the commission prepared and introduced extensive exhibits and the examiner's finding of 55 per cent of the existing first class rate as the basis for reduction for westbound shipments supports the contention of the Oregon interests for lower rates.
"The Oregon commission, through its rate and legal staff, represented the Oregon Wool Growers' association and other state interests in the public hearing in this proceeding which was conducted in its office in Portland."

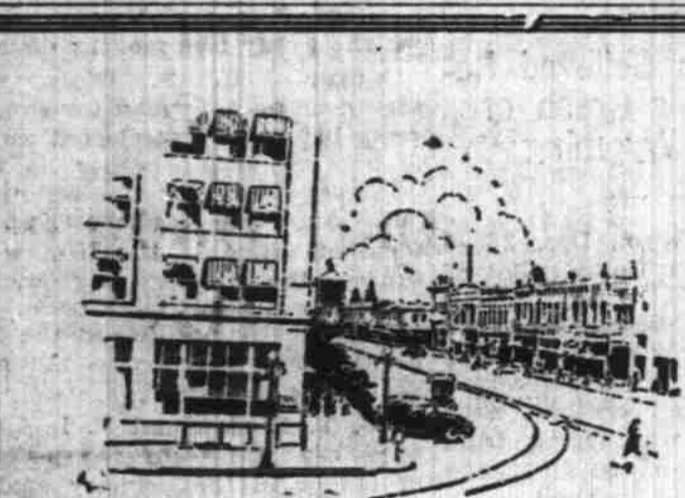
German Viewpoint Sent To Premier Poincare

(By The Associated Press)
PARIS, Dec. 24.—Herr Von Hoesch, the German charge d'affaires, delivered to Premier Poincare this evening a 10 page type-written memorandum setting forth in detail the German government's viewpoint on the following questions.
The economic relations between the German occupied and unoccupied territories, the dues levied, entry into occupied territory, currency of the Rhenish Westphalia bank, navigation of the Rhine, railroad traffic and questions bearing on the general administration and internal regulation of the occupied territory.



Cigarette

Toasting the tobacco
for LUCKY STRIKE
costs a fortune but it
saves the flavor.



FORMER HEAD OF K. P. DIES HERE

John M. Wall, Once Mayor of
Hillsboro, Passes at
State Hospital

John M. Wall, former grand chancellor of the Knights of Pythias in Oregon and former mayor of Hillsboro, died at the Oregon State hospital yesterday at the age of 52 years. Paralysis caused his death.
Mr. Wall came to the hospital last January. He was a native of Wales. He had lived in Oregon 33 years. He is survived by a wife and daughter in Portland.

Reading Circle Books at Mrs. Fulkerson's Office

Mrs. Mary Fulkerson, county superintendent of schools, has a number of the state reading circle books in her office which she will loan to the teachers of the county who want to read them that way.
The books she has are: Rural Education, How to Choose and Get a Better Job, Intelligence of School Children, The Principal and His School, Children's Literature, Acquiring Skill in Teaching, Fundamentals of Tests and Measurements, The Nation and the Schools, The Rural Community, Teaching by Projects, General Methods of Teaching in Elementary School, Adolescence and High School Problems, Spontaneous and Supervised Play in Childhood, Silent and Oral Reading, The Story of Mankind.

Special Rates Announced By the Southern Pacific

Special rate tickets between Salem and Portland will be sold by the Southern Pacific, effective January 1, the public service commission announces. These will be 15-day tickets and the rate from Salem to Portland and return will be \$2.50. Tickets from Salem to Portland via Gerlinger one way

and return via Chemawa, will sell at \$3.35.
On sale Friday, Saturday and Sunday week-end tickets will sell at \$2.20. For tickets via Gerlinger one way and return via Chemawa, or reverse, a charge of \$2.50 will be made by the Southern Pacific. The week-end tickets become effective January 4.

STRONG TONES ARE SHOWN ON MARKET

Pre-Holiday Dullness Is
Enlivened By Bullish Dem-
onstrations

NEW YORK, Dec. 24.—Stock prices displayed a strong tone in today's relatively quiet pre-holiday market which was featured by a series of bullish demonstrations on special issues. Standard industrial moved within comparatively narrow limits on a small volume of trading while a number of the rails which showed traces of heaviness in the early dealings firmed up before the close.

Predictions of a further advance in crude oil prices in January by oil executives was responsible for a further wave on buying in Standard Oil and independent issues, Associated Oil and Maracalbo, all touching new high records for the year. Other outstanding strong spots in this group were Marland, Cosden, Producers & Refiners, General Asphalt and California Petroleum; all up a point or more.

WOMAN'S STATEMENT WILL HELP SALEM

"I hated cooking because all I ate turned sour and formed gas. I drank hot water and olive oil by the gallon. Nothing helped until I used Adlerika." Most medicines act only on lower bowel but Adlerika acts on BOTH upper and lower bowel and removes all gas and poisons. Excellent for obstinate constipation. Helps any case gas on the stomach in TEN minutes. J. C. Perry, Druggist, 115 S. Commercial St.—Adv.

GENERAL MARKETS

Wheat
MINNEAPOLIS, Dec. 24.—Cash No. 1 northern \$1.07 1/2 to \$1.18; No. 1 dark northern spring choice to fancy \$1.14 1/2 to \$1.18 1/2; good to choice \$1.10 1/2 to \$1.13 1/2; ordinary to good \$1.08 1/2 to \$1.10 1/2; December \$1.05 1/2; May \$1.09 1/2 July \$1.10 1/2.
BUENOS AIRES, Dec. 24.—

Open: Wheat 1/2c lower; January 98 1/2c, February 96 3-4 cents.
Dried Fruit
NEW YORK, Dec. 24.—Evaporated apples firmer; choice 12c @ 13c; fancy 13 1/2 @ 14c, prunes nervous; Californias 5 @ 14 1/2c; Oregon 4 @ 12c; apricots quiet;

choice 10 1/2 @ 11 1/2c extra choice 13 @ 13 1/2c; fancy 15 1/2c. Peaches firm; choice 8c; extra choice 8 1/2c; fancy 9 1/2c.
Hops
NEW YORK, Dec. 24.—Hops quiet; state 1923, 50 @ 55c; Pacific coast 27 @ 31c; 1922 21 @ 25c.

Total stock sales 731,000 shares.
Twenty industrials averaged 94.42; net gain .79.
High 1923, 105.38; low 85.76.
Twenty railroads averaged 82.67; net gain 27.

To Cure a Cold in One Day

Take
**Bromo
Quinine**
Tablets

BROMO QUININE Tablets begin immediately to counteract the activity of Cold, Grip and Influenza Germs and bring to a sudden stop the dangerous work of these dreaded disease germs in the human body.
BROMO QUININE Tablets quickly render these germs powerless and completely destroy their organic existence.
The Tonic and Laxative Effect of Laxative BROMO QUININE Tablets is very beneficial to the system at all times.
The box bears this signature
E. H. Brown
Price 30c.

PAINTING TO YOUR DESIRES

NOW is the time to have the car painted for Fall and Winter use—HERE is the place to have it done.
Superb workmanship plus defined, aristocratic, distinctive color schemes and the finest quality paints and varnishes insure genuinely satisfactory work.
**RELIANCE
AUTO PAINTING CO.**
219 State. Corner Front.
PHONE 937

CHRISTMAS GREETINGS

May the blessedness
of the Christmas
Spirit Abide with
you today, tomorrow,
and in all the days to
come :: :: ::

Kellogg Bros.
Salem Store, 466 State St. Portland Silk Shop, 383 Alder St.

We Wish To Extend Holiday Greetings To Our Friends And Patrons

GIESE -POWERS

Merry Christmas

The United States National Bank
wishes each of its many friends
and patrons a very
Merry Christmas

The
United States
National Bank
Salem, Oregon

CHRISTMAS is more than a Holiday--it is a Heritage of Happiness in the hearts of men. Down through the centuries it has brought the beautiful benediction of "Peace on Earth; Good Will to Men." And each year it brings us anew the pleasure of wishing you, with our whole heart, "A Merry Christmas and abiding Happiness throughout the year

First National Bank

129 N. Commercial St.
SALEM, OREGON

TO OUR FRIENDS AND CUSTOMERS May It Be a Happy Day For You

A.L. Stiff Furniture Co.
COMPLETE HOUSE FURNISHING