

NEW SCHOOL SYSTEM TRIED

Winnetka, Ill., Testing Out Novel Educational Plan, Says Report

Attorney General Van Winkle has written an opinion for J. A. Churchill, state superintendent of schools, advising that the boards of county school districts in counties that have adopted the county unit system for administration and taxation may levy taxes for the maintenance, operation and support of public elementary schools and for acquiring and improving school sites. This includes authority to levy taxes for building school houses. The opinion holds further that the boards may use funds provided by such levies for construction purposes in building school houses without express authority from the district electors, also that they may incur indebtedness necessary in maintaining the

schools of the district, or in meeting emergencies, but that, before issuing bonds or creating any indebtedness which will be of considerable duration the question should be submitted to the electors. The right to levy such taxes or to incur any indebtedness is subject to constitutional and statutory restrictions as to amount.

REGISTRATION IN STATE 333,017

Total Only 33 More Than For General Election of Last Year

The total registration in Oregon for the referendum election on November 6, when the proposed state income tax is to be voted on, is 333,017, the records of the state department show. This is for all political parties and miscellaneous registrations. The total is only 33 more than for the general election of November, 1922, when the total was 332,955. The vote cast in November, 1922, was 241,267. The new registration by counties is as follows:

Baker, 6,430; Benton, 5,841; Clackamas, 18,590; Clatsop, 8,442; Columbia, 4,360; Coos, 7,692; Crook, 1,667; Curry, 1,537; Deschutes, 4,276; Douglas, 11,543; Gilliam, 2,060; Grant, 2,820; Harney, 1,389; Hood River, 2,741; Jackson, 11,845; Jefferson, 1,144; Josephine, 4,010; Lake, 2,077; Lane, 20,374; Lincoln, 3,052; Linn, 9,783; Malheur, 4,327; Marion, 21,316; Morrow, 2,521; Multnomah, 100,835; Polk, 7,634; Sherman, 1,756; Tillamook, 4,209; Umatilla, 10,650; Union, 7,889; Wallowa, 3,748; Wasco, 6,704; Washington, 15,223; Wheeler, 1,362; Yamhill, 7,863. Total 333,017.



Me for COMFORT in the morning!

—Noon, night or morning—there's nothing so gratifying as the warmth from a good oil heater filled with Pearl Oil! Heat by the roomful right where and when it is needed: sick-room or guest-room, living-room, hallway or bath—no fire to lay—coal, wood or ashes to lug—only the touch of a match! And no "oily" smell—Pearl Oil is refined and re-refined—the clear, bright flame consumes it entirely.

When you order, remember "coal oil" and "kerosene" are simply generic terms for kerosene of all kinds—good, bad and indifferent. Make sure you get the highest quality kerosene only, refined by the Standard Oil Company's special process. Ask for Pearl Oil by name.

STANDARD OIL COMPANY (California)

PEARL OIL for HEAT & LIGHT



REV. ELVIN GOING TO A NEW CHARGE

He Will Have the Hardest Congregational Job in North Dakota

Rev. James Elvin, very well known in Salem, formerly pastor of the First Congregational church of this city, without any knowledge or solicitation on his part, has been called to take the hardest Congregational charge in North Dakota.

They are building a \$300,000 normal school in Dickinson, and the people here asked Mr. Elvin to lead them. They are trying for 1200 students in two years. The Congregational church is strong and aggressive, and the people are all ready to build a beautiful \$50,000 church and will begin the coming spring. It is a big opportunity, and Mr. Elvin is to begin work there next Sunday.

He has had charge of the Congregational church, at Sidney, Montana, and his new location is 150 miles from there.

Miss Elliott Visits Sidney
In a letter to a Salem friend, Mr. Elvin says the Elvin family recently enjoyed a visit from Miss Enid Elliott, and that they had a great time going over the old times in Salem. Miss Elliott is with the Chautauquid in the summer and takes in Portland the coming winter. Her father, who was formerly superintendent of the Salem public schools, is president of the State Normal school at Lewiston, Idaho.

Most Students Belong To Christian Churches

Ninety-three per cent of the students in Willamette university are members of Christian churches or have affiliated with some denomination, according to figures compiled yesterday by Susan B. Chaffler, registrar. Twenty-one denominations are represented.

Of the 572 students registered in the College of Liberal Arts 377 are members of the Methodist church, or give preference to that denomination. Fifty students give preference to the Presbyterian church, 23 to the Baptist church, and 21 to the Christian denomination. But 25 students are not church members and have no preference.

Of the remainder the number who give church affiliation or preference are: Evangelical, 14; Friends, 12; Congregational, 8; Roman Catholic, 6; Episcopalian, 5; Unitarian, 4; Church of God, 3; Methodist Episcopal South, 2; Nazarine, 2; Mennonite, 2; Seventh Day Adventists, 2; German Lutheran, 1; Greek Orthodox, 1; Greek Catholic, 1; Church of Christ, 1; Christian Science, 1; Japanese Methodist, 1.

"SALEM'S FASTEST GROWING STORE—OVER 33,000 SQUARE FEET FLOOR SPACE"

"ROSE OF THE WORLD"

Is the name of Kathleen Norris' new love story. It begins in the December issue of the Delinestor magazine. Subscribe for the Delinestor now! A special price prevails.—Patterns Dept.



BUTTERICK PATTERNS

Guide you at every step. There's no guess work, they are so simple a child could cut out a garment the Butterick Deltor way.—Pattern Dept.

SATISFACTION ALWAYS AT MILLER'S

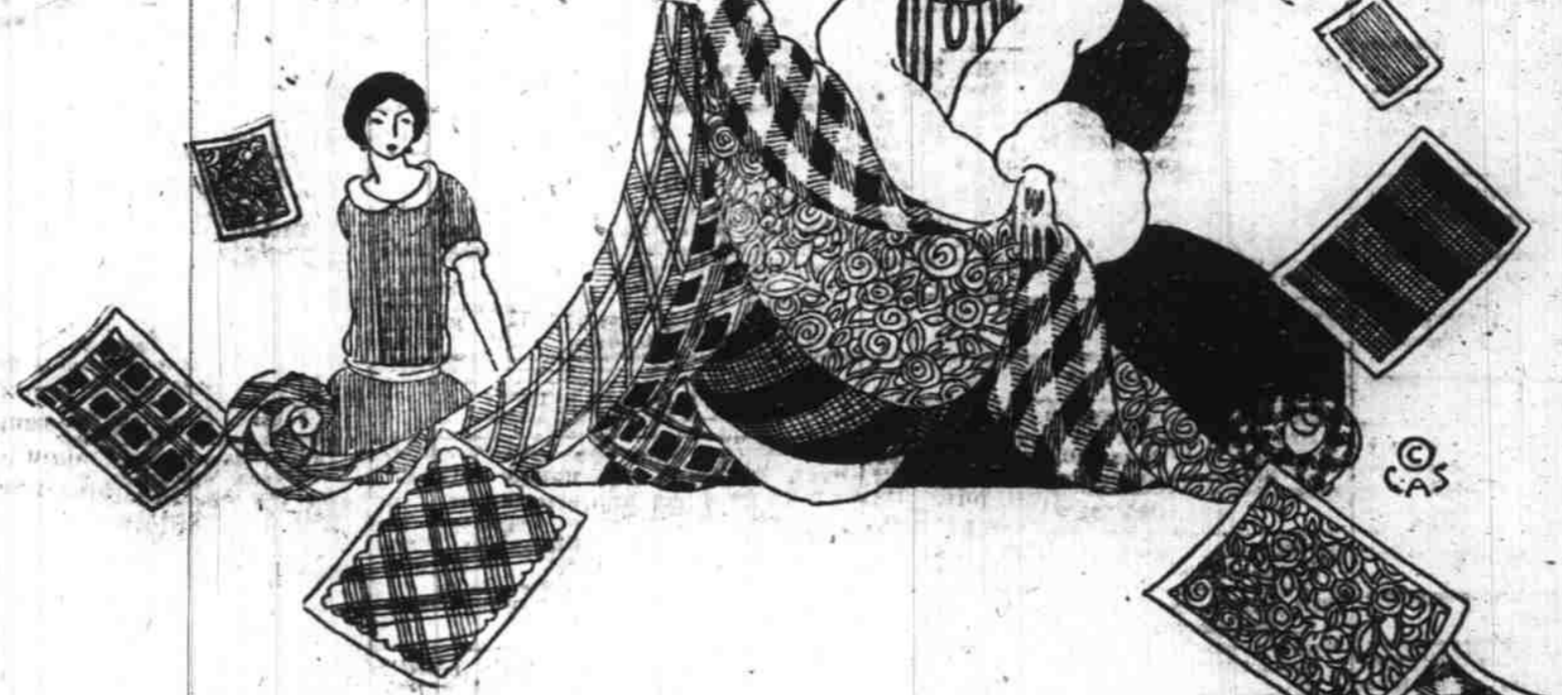
New Autumn Fabrics

The Wanted Notions

Our Notion Shop is ready to meet every requirement of the home-sewer.

For instance:

- Silk thread, all colors, 100 yd. spools 12c
- Cotton thread, all colors 150 yd. spools 5c
- Basting Thread 500 yr. spool 10c
- Thimbles, a variety at . . 5 and 10c
- Scissors of every description.
- Tape measures 5c to 20c
- Buttons for every need
- Bias Binding 15c
- Plain Elastic, yd. 8c to 28c
- Stay Belting, yd. 15c to 30c
- Snaps, 8c; Hooks and eyes . . 8c
- Dress Shields 25c to 50c
- Dress Linings 50c to 90c
- Needles 10c
- Pins 10c and 12c



SALE OF Wool Skirting

We've assembled no less than 25 pieces of skirting for this sale. Every one, truly a value that merits at least an investigation. Skirts for school, for business wear, for home, can be fashioned from these at a saving of nearly one half. You'll find here the shades in popular trend. Values to \$4.50. NOW!

\$2.95 YD.

Another selection in wool mixed skirtings that are indeed worthy of any needle. You'll find among them small checks, plaids and stripes that fashion lovely skirts. Values to \$3.00. NOW!

\$1.95 YD.

and now comes Sewing Week

This showing will excel in variety and quality, and is by far the largest collection we have ever assembled

Beginning Today November 2nd Visit Fabric Aisle See the Marvel of the Loom

Arabia Cloakings De Luxe, \$11.50 yd.

This fabric has a rich appearance with distinct diagonal weave. Is soft, deep-piled and extremely beautiful when used with fur. A popular weave for coats and capes this season. Colors, black and brown, 56 inch.

Bolivia \$5.95 Yd.

A deep weave that gives a suggestion of warmth at a mere touch. Moderately priced and second to none among fabrics of this class. Has a very evident diagonal weave. Popular colors, 56 inch.

Soft and Warm Velours \$3.95 Yd.

Not too bulky in weight, but extremely warm and serviceable because of the fine yarns used in its construction. Its easy to fashion a coat of velour, 56 inch. Season's colors.

Mallinson's Butterfly Velvet Voile

In the pursuit of simplicity Butterfly Velvet Voile will prove women's best ally. Only a few yards, draped, swirled, ruffled, plaited, allowed to take the straight or circular way, and you have a frock in which to dance, dine, bridge or tea. We are Salem's exclusive agents for Mallinson's Silk DeLuxe.

And "Sewing Week" is no less important than "Style Week," "Better Homes Week," and other weeks that have played prominent roles in which merchandise is featured at its very best. Home Sewing Week will appeal to the home-sewer because the prices are unusually low. To the experienced seamstress because of the vast showing of fabrics. The numerous findings that are featured in the Notion Shop will attract your notice this week. Our salespeople will give you accurate attention.

Printed Crepe \$4.50 Yd.
A new print that in effect resembles a satin crepe. Its colorings are superb, suggestion of the Orient. Combinations of the season's popular shades and tones, 40 inch.

Satin Faced Canton Crepe \$3.50 Yd. up
Easily the season's leading silk fabric. Soft clingy, rich and lustrous satin faced cantons in our showing represents the truest values. Wood, brown navy, black, etc. 40 inch.

Lining Silk \$1.75 Yd.
Plain and fancy linings in colors to match the new coatings. 36 and 40 inch widths. Other silk linings in crepe de chine, pussy willow, taffetas, etc., priced up to \$4.00 yard.

Mole Plush \$10.50 Yd.
For Jaquettes, trimming, collars and cuffs. This mole plush adapts itself admirably. Has a permanent finish very lustrous. Colors: mole and heaver, 50 inch. Salt's pecco plush 50 inch black \$4.98 yard.

Silk Knitted Vesting
Tub silk for vestings may be had here in orchid, flesh, peach and white. These tube vestings are economical because one can fashion a vest in a few moments at less than one third the price of a ready made. Buy them now for gift giving!

Velvet Corduroys 95c
38 inch velvet corduroy in colors of Copenhagen blue, navy blue, rose, receda, brown red, jade and white. Regularly priced at \$1.25 yard.

Fine Percalé	The finest Manchester cambric percales are now available in our domestic buyways. Texture so close and firm that one can scarcely detect the weave. These make durable house dresses, men's shirts, boy's blouses, etc.	30c yd.
36 inch Taffetex	Fifty-five colors in Taffetex, a blend for every use. Taffetex looks like silk, has a permanent finish, is soft and drapy, used for so many home things, such as side drapes, curtains, etc. See the new colors in Taffetex.	75c yd.
Fancy Sateen	For durable, practical coat linings these fancy sateens are in popular demand. Fine soft qualities neat patterns in wanted colors.	95c yd.

Poiret Twills \$2.50 Yd. up

Fashion trend predicts a big season for wool poiret twills. Very pliant, yet finished to give the appearance of serge this fabric is made in several weights for dresses and suits. Widths from 45 inch to 54. Colors navy and brown.

Wool Tricotines \$2.75 Yd. up

Wool Tricotines have demonstrated their adaptability to the present mode. Rich in appearance tricotines easily hold their own with other weaves for dresses and suits.

Wool Challies \$1.25 and \$1.35 Yd.

Wool challies are used in combination this season. The new ones are printed in lovely Oriental patterns. Others are conventional stripes designs, etc.

Chiffon Velvet \$5.00 Yd.

Chiffon velvets seem softer than ever. And we have a theory why that is. Fashion has cast a glance of more than usual favor on chiffon velvet for the coming season, and perhaps it's the radiance of her smile that has added new sheen to a heretofore glorious fabric. Black and colors included at this price. In connection with the velvets you must see the brocaded and metallic fabrics. The combination is well nigh irresistible!

Special Note to Quilting Parties
Sale of Rock River 72x90 Cotton Batts
This number in Rock River quality is so staple that most housewives identify it by its price which is \$1.25 regularly. During sewing week this Batt will be special-ed at \$1.00.
Bazaars and quilting parties will take advantage of this special price.

\$1 **\$1**

WE PAY CASH FOR YOUR FURNITURE AND TOOLS
Capital Hardware & Furniture Co.
Best Prices Paid.
225 N. Com'l St. Phone 947