

Oregon State News

Snow Stops Work

The road camps on the upper McKenzie highway near the summit of the Cascade mountains were closed yesterday for the winter on account of deep snow, according to Charles Lind of Bellingham, Wash., contractor for the bureau of public roads, who arrived in Eugene from the scene of operations.

Mr. Lind said that the snow had fallen to a depth of a foot and a half at Frog camp, six miles from the summit, when he left, and that it extended as far down as Alder springs, which are 12 miles above McKenzie bridge.

school district and Aurora district lying in Marion county to decide the question of Aurora becoming a part of Woodburn union district, the petition having come from Aurora. There was a light vote in both districts, many not attending because they were busy and it was a foregone conclusion as to the result of the voting. The vote was as follows: Woodburn, yes 31, no 9; Aurora, yes 43, no 13. This brings Aurora into the union. In the Woodburn union district only one from outside of Woodburn district except the directors voted.—Woodburn Independent.

Clarks Locate at North Bend

NORTH BEND, Oct. 19.—Mr. and Mrs. W. J. Clark and two sons arrived Wednesday from Forest Grove and are to locate in North Bend. They are at present residing at the George Beattie residence, who also came here only two weeks before from that city. Mr. Clark is an old-time newspaper man, for eight years was publisher of the paper at Independence, and the past two years was one of the owners of the Times-News at Forest Grove. He states that ill-health has forced him to give up his chosen profession. The boys will enter high school next week and Mr. and Mrs. Clark will take several weeks' time in investigating a number of propositions they have before them.

Load Limit Fixed

ALBANY, Oct. 19.—Resident Highway Engineer W. K. Wright announced today that immediately a load limit will be placed on the newly graveled west side Albany-Corvallis road during the winter.

The maximum limit for all vehicles will be 10,500 pounds, including the weight of the vehicle itself, Mr. Wright says. Tire width limits for loads under the maximum will be as follows: for vehicles with tires 30 inches or more wide, 450 pounds per inch; with tires less than 30 inches in width, 375 pounds per inch. This ruling does not apply to the bridge, over which the county alone has jurisdiction.

Club Has New Quarters

It was decided at a meeting of the Dallas Commercial club Wednesday evening to have a Main street headquarters, and for the purpose a committee headed by R. S. Kreson was authorized to close a lease on the north first floor room in the Dallas City bank building.

The reason given for the change is that it is desirable to have more prominent windows for the display of the products of the county, and a place more handy for strangers to visit and secure information as to this section of the country. The quarters are much smaller than the ones now being used at the corner of Mill and Jefferson streets, and no effort will be made to hold large meetings there or serve lunches.—Polk County Observer.

Benefits of Auto Park

CORVALLIS, Oct. 19.—The families of Wilber Van Sycle and Floyd Kelly are in the auto park while looking for a satisfactory place to live. They drove from Selling, Okla., leaving there September 25. They found the roads poor in Wyoming and Idaho, but when they struck the Oregon line the roads were perfect, they report. Mr. Van Sycle is a brother-in-law of John McCready. These two families make a total of 23 families that have located here through the auto park. Travel continues heavy, from six to a dozen cars stopping at the park every night.

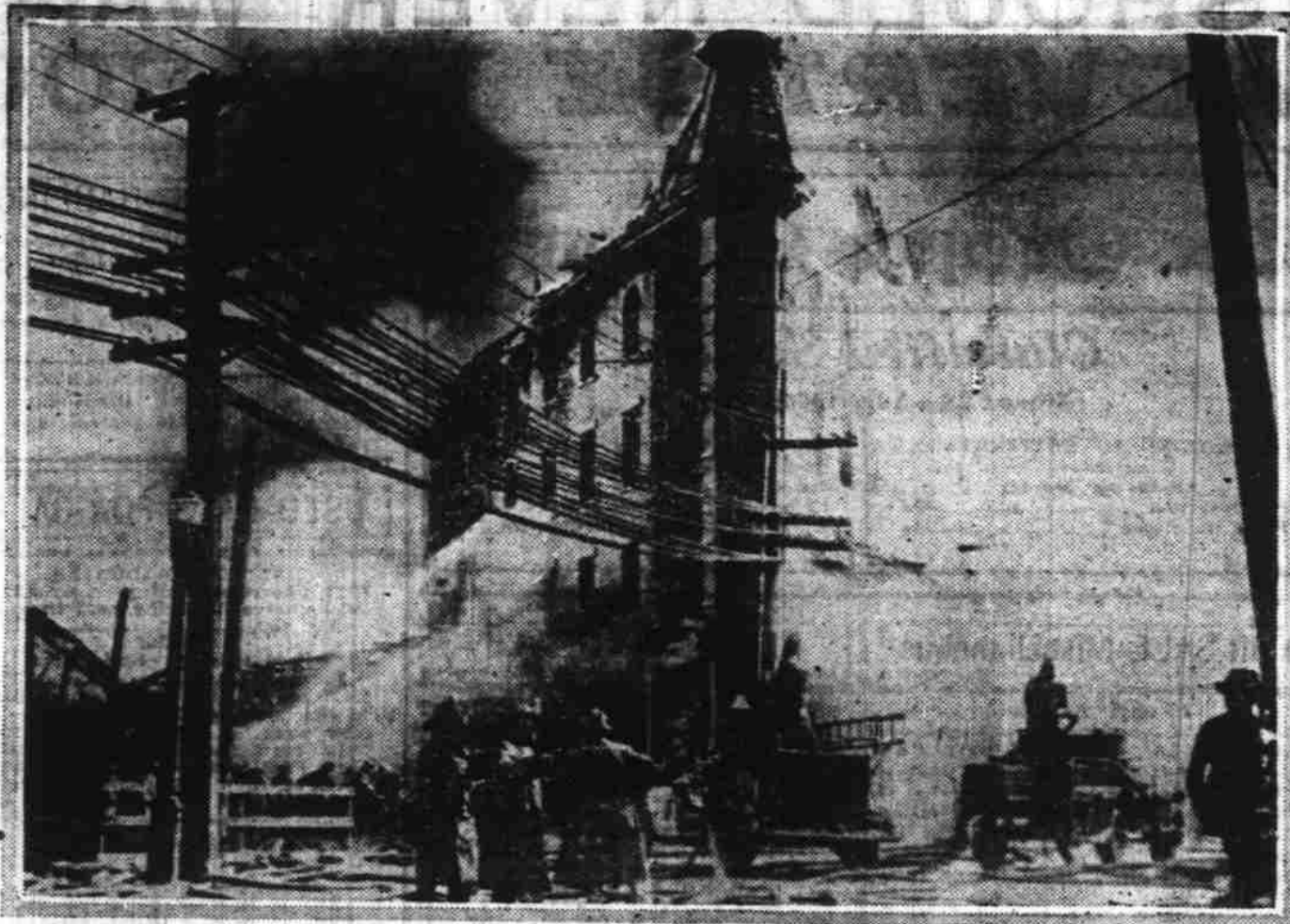
Aurora Comes Into Union

Last Saturday an election was held in the Woodburn union high

Cost Artillery Honored

MARSHFIELD, Oct. 19.—The 45th company, coast artillery corps, Oregon national guard, the pride of Coos Bay, has been signally honored by the state department with an award of a "certificate of merit" for the efficiency

HALF MILLION DOLLAR FIRE IN PROVIDENCE, R. I.



Virtually all police and firemen in Providence, R. I., including those on duty on two platoon system, were called to fight this fire, which started in the Lewis Building (shown in photo), at Dorrance and Dyer streets, on the water front, and swept six buildings, most of them the property of the Providence Coal Company, causing an estimated damage of at least \$500,000 and forecasting future difficulty in handling coal during the winter. Fourteen firemen, working under the south wall of this building, were saved from almost certain death by a policeman, who saw the wall beginning to crumple and blew his whistle, signaling them out of danger just in time.

DEDICATION OF STATUE FEB. 23

Site in State House Grounds Selected for "The Circuit Rider"

Killing the Does

GRANTS PASS, Oct. 18.—The Courier makes this complaint of law violation. "Within the past two days, evidences of the killing of two doe deer, within a few miles of Grants Pass, have been found. In one instance the head and other evidence had been put in a sack and thrown into the Rogue. In the other instance the deer had been skinned and no effort made to destroy the evidence. A little fawn, which in a day or two would have died of starvation or fallen victim to the coyotes or other wild animals, was close by.

Loggers Accept Wage Cut

BEND, Oct. 18.—Compromising on the question of a wage reduction requested by the employer members of the Loyal Legion of Loggers and Lumbermen in the 12th district, members of the conference committee from both the Brooks-Scanlon and Shevlin-Hix on locals decided Monday afternoon on a 20 cent wage reduction effective today, and a second reduction of like size effective December 1. The request made by the companies had been for a 40 cent reduction as of October 16. Announcement of the change, affecting all departments, which leaves the basic wage at \$4 a day, was made by C. L. Simpson, chairman of the conference committee of the Shevlin-Hixon local.

New Bridge At Albany

ALBANY, Oct. 18.—With 1687 signatures of registered Linn county voters attached, asking for the submission of a proposal at the November 6 election that the county issue bonds in the amount of \$180,000 for building bridges over the Willamette river at Harborsburg and Albany, were declared sufficient by County Clerk R. M. Russell last evening.

Curry County is Mining

PORT ORFORD, Or., Oct. 17.—What is regarded as a forecast of probable activity in Curry county mines, is the action of Dr. J. M. Schumann and A. E. Chesbrough of San Francisco, Cal., who have recently secured options on land along Elk river for the purpose of prospecting for platinum and gold. The men are experienced in the mining game, and after weeks spent in this vicinity, have decided to investigate the Elk river country with a view to extensive development.

Serpentine Celebration

By Silverton Students

SILVERTON, Or., Oct. 19.—(Special to The Statesman).—What is said to have been the largest rally ever held at Silverton was held Thursday night by the Silverton high school student body. The student body serpentine the streets, the Cozy confectionery and the two motion picture houses.

Howard Elliott Likes Ong Valley

CORVALLIS, Or., Oct. 17.—"We find the Oregon Electric to be in fine shape, much better physically than we expected, and the trains make fast time and give good service," said Howard Elliott, chairman of the board of directors of the Northern Pacific, in Corvallis yesterday afternoon. Mr. Elliott and his party, in their private car, stopped in Corvallis a short time late yesterday afternoon. They had been to Eugene on a tour of inspection.

Lane County Taxes Cut

EUGENE, Oct. 17.—Over \$4000 has been lopped off Lane county 1924 taxes by the tax conservation and supervising commission, according to Herbert Walker, secretary, this morning. The cuts have been made in school districts scattered over the county. This is \$1500 more than the annual expense item of the commission, and work has just started, in that none of the big budgets have yet come up for consideration, Walker points out.

More Road Work

ROSEBURG, Oct. 18.—That through the consolidation of road districts in the lower Umpqua river district and the voting of a special tax the county court hopes to complete the Roseburg-Reds-port highway, was the statement made today by County Judge George Quine.

The Credulous Women

MARSHFIELD, Oct. 18.—Arthur Covell, archfiend, crippled astrologer, hypnotist, and confessed murderer, was not unknown to some Marshfield women. He would read one's horoscope and tell of the future and there are several women of this city who believe in that sort of thing and who had called upon Covell and had him read their future, according to the planets, his way of telling what is to come to pass.

More Road Work

ROSEBURG, Oct. 18.—That through the consolidation of road districts in the lower Umpqua river district and the voting of a special tax the county court hopes to complete the Roseburg-Reds-port highway, was the statement made today by County Judge George Quine.

Here Madam is the Loaf for You

and your family. Not only is it big in size but big in quality, flavor, and wholesomeness. I baked this loaf, so I know that it is light, white, pure and good for everybody in your house. Just like baking it yourself at home, without the bother.

squad, Howard Edison, football manager, Milton Bristol, high school athletic editor, Miss Eleanor Adams, yell leader, Miss Kathleen Booth, student body vice president.

The fellow most likely to make farming pay is the farmer himself. He has always worked out his own problems right and he is pretty apt to do it now.

VICKS VAPORUB
Over 17 Million Jars Used Yearly
For All Cold Troubles

BUSICK'S

STANDARDIZED CASH STORES

It has always been the policy of the Busick store to serve the people a little bit better than was expected. Our stores are today in a position to render a service far greater than ever before. Quantity buying and low overhead enables us to sell the best for less which we feel is a real service to our customers. Car loads of the best merchandise obtainable are distributed to the trade at very little more than wholesale prices. We advertise more items than any store in Oregon; that is evidence that all our prices are right and not disguised by a few low prices on a few staple items.

Soap prices that are made possible only by buying in large quantities	Kellogg's Corn Flakes, 3 for.....25c
National Soap Company full 12 oz. bar Savon Laundry Soap, 5 bars 25c	Post Toasties, 3 for.....25c
Cocoanut White Laundry, large bar—largest bar sold at price, 6 for.....25c	Kellogg's Krumbled Bran.....22c
Sunny Monday Soap, 7 large bars.....25c	Kellogg's Flaked Bran 15c
Fairy Soap, 8c bars, 5 bars.....25c	Post Bran Flakes.....15c
Fairbanks Glycerine Tar Soap, 5 bars.....25c	2 for.....27c
Gold Dust, large size 25c	Grape Nuts, 2 for.....35c
Fels Naptha Soap, 10 bars.....69c	Puffed Wheat, 2 for.....27c
Old Dutch Cleanser, 3 for.....25c	Puffed Rice, 2 for.....35c
Sunbrite Cleanser, 2 for.....15c	Alber's Flap Jack.....26c
Citrus, 2 large pkgs.49c	Flour.....26c
	2 for.....49c
	Alber's Peacock Buckwheat.....28c
	2 for.....55c
	No. 10 sk fine Graham 40c
	Coarse Graham 40c
	No. 10 sk Whole Wheat 40c
	No. 10 sk Wheat Cereal.....60c
	BACON AND HAMS
	Cascade Hams, lb.29c
	Swift's Premium.....33c
	Armour's Star.....33c
	Puritan.....33c
	Picnics.....18c
	Bacon Squares.....15c
	Cottage Rolls.....20c
	Medium Light Bacon 25c
	SYRUPS
	10 lb. can Crystal White Karo.....73c
	10 lb. can Amber Karo 69c
	1 gal. can Tea Garden Cane.....\$1.08
	Table Size Log Cabin 29c
	Med. size Log Cabin 55c
	Large size Log Cabin 1.05
	1/2 gal. can Liberty Bell Cane and Maple.....87c
	1 gal. can.....\$1.67
	LARD AND SHORTENING
	4 lb. can Snowdrift.....89c
	8 lb. can Snowdrift \$1.69
	3 lb. can Crisco.....75c
	6 lb. can Crisco.....\$1.45
	9 lb. can Crisco.....\$2.13
	Pure Lard, 5 lbs. net.....93c
	10 lbs. net.....\$1.79
	CANNED MILK
	10 cans Darigold.....98c
	6 cans Carnation.....65c
	6 cans Alpine.....65c
	6 cans Borden's.....65c
	FLOUR and CEREALS
	Best Valley Flour sk \$1.19
	Vim Flour, sk.....\$1.65
	Gold Medal, sk.....\$1.85
	Crown, sk.....\$1.79
	Drifted Snow, sk.....\$1.79
	Olympic, sk.....\$1.79
	Alber's Pancake Flour, sk.....65c
	Crown Pancake Flour, sk.....69c
	Alber's Oats, sk.....49c
	Package.....27c
	Crown Oats, pkg.....29c
	Quaker Oats, pkg.....29c
	Roman Meal, pkg.....35c
	Uncle Sam's Health Food.....33c
	Shredded Wheat, 3 pkgs.29c
	MISCELLANEOUS
	2 lbs. Gem Nut.....45c
	Nucoa, lb.29c
	Full Cream Cheese, lb. 30c
	No. 5 Soda Crackers.....45c
	Folger's Shasta Tea, 1/2 lb.23c
	Bulk Cocoa, 2 lbs.25c
	Bulk Cocoa, 10 lbs.75c
	FANCY APPLES
	Jonathan, large size, box.....\$1.35
	Kings, large size, box 1.35
	Spitzenbergs, box.....1.35
	Grime's Golden, box 1.35
	Fancy pack winter Bananas, per box 1.50

BUY FROM A STORE WITH THE

ORANGE COLOR FRONT

It's Your Guarantee of Service Plus Quality

Damon's

"Weekly Limericks"

Here's one by Mr. H. M. Bibby, Route 9, Box 83:

"After looking and looking around
A store at last has been found
Whose service, the best,
Sets your worries at rest,
With prices moderate and sound."

Come in any time Mr. Bibby and get your sack of flour free for writing the above.

Hurry up, folks, and send in some more Limericks or we will run out of ammunition.

If yours is used in our advertising we will make you a present of a sack of Hard Wheat Flour.

Mr. Garfield, your Limerick was in last night's ad. in the Capital Journal. Did you see it?

Some prices follow which make our store an interesting place to trade:

Lemons, per dozen.....30c	1 pint Cane and Maple Syrup.....25c
Cabbage, per lb.2c	Large Size Dark Karo Syrup.....65c
Quinces, per bushel \$1.00	Large Size Light Karo Syrup.....70c
4 Peroxide bath soap, regular 10c size, for 25c	Best Creamery Butter 52c
New Dill Pickles, 2 for 5c	Guaranteed Eggs, doz. 38c
New Sauerkraut, qt.15c	8 lbs. Onions for.....25c
Nice Fat Picnic Hams.....18c	Best Jonathan Apples hand picked and free from worms.....\$1.25
Libby's Pork and Beans 10c	5 large rolls Toilet Paper for.....25c
Libby's Catsup.....25c	Sugar Pumpkins for pies, each.....10c
14 lbs. of Potatoes for 25c	
Lint (the new starch) 2 for.....10c	

Drop in and place your next order with us. Oh! Yes! We forgot to tell you that "Joe" has some nice Pork Sausage at 20c. Pork Chops at 25c and some nice steaks and Roasts and everything.

Damon Grocery Co.

"Joe's" Market

899 N. Commercial St.

NO RENT. LOW PRICES.

Curry County is Mining

PORT ORFORD, Or., Oct. 17.—What is regarded as a forecast of probable activity in Curry county mines, is the action of Dr. J. M. Schumann and A. E. Chesbrough of San Francisco, Cal., who have recently secured options on land along Elk river for the purpose of prospecting for platinum and gold. The men are experienced in the mining game, and after weeks spent in this vicinity, have decided to investigate the Elk river country with a view to extensive development.

Howard Elliott Likes Ong Valley

CORVALLIS, Or., Oct. 17.—"We find the Oregon Electric to be in fine shape, much better physically than we expected, and the trains make fast time and give good service," said Howard Elliott, chairman of the board of directors of the Northern Pacific, in Corvallis yesterday afternoon. Mr. Elliott and his party, in their private car, stopped in Corvallis a short time late yesterday afternoon. They had been to Eugene on a tour of inspection.

Serpentine Celebration

By Silverton Students

SILVERTON, Or., Oct. 19.—(Special to The Statesman).—What is said to have been the largest rally ever held at Silverton was held Thursday night by the Silverton high school student body. The student body serpentine the streets, the Cozy confectionery and the two motion picture houses.

More Road Work

ROSEBURG, Oct. 18.—That through the consolidation of road districts in the lower Umpqua river district and the voting of a special tax the county court hopes to complete the Roseburg-Reds-port highway, was the statement made today by County Judge George Quine.

Lane County Taxes Cut

EUGENE, Oct. 17.—Over \$4000 has been lopped off Lane county 1924 taxes by the tax conservation and supervising commission, according to Herbert Walker, secretary, this morning. The cuts have been made in school districts scattered over the county. This is \$1500 more than the annual expense item of the commission, and work has just started, in that none of the big budgets have yet come up for consideration, Walker points out.

HERE MADAM IS THE LOAF FOR YOU

and your family. Not only is it big in size but big in quality, flavor, and wholesomeness. I baked this loaf, so I know that it is light, white, pure and good for everybody in your house. Just like baking it yourself at home, without the bother.

"Always a bit better"

PEERLESS BAKERY
170 N. Commercial Phone 308