

## AUTOMOBILES, TRUCKS AND TRACTORS MOTORCYCLES—BICYCLES—ACCESSORIES

### MANY STUDEBAKERS IN BIG DRIVE-AWAY

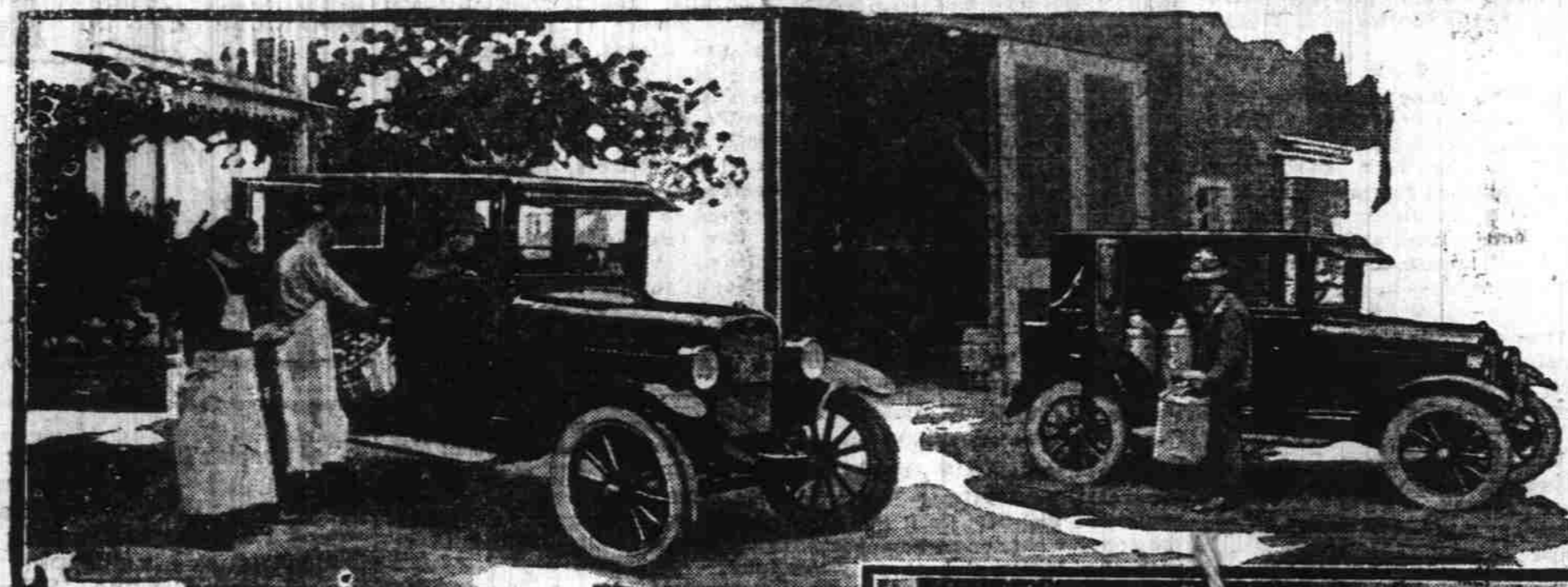
150 Light Sixes Leave Factory to Fill Orders of Dealers Who are in a Hurry

On Thursday, September 20, 150 cars were driven from the South Bend factory of the Studebaker corporation to fill retail orders of Studebaker dealers. This was the largest drive-away

ever held by Studebaker at this season of the year.

These cars were 1924 Model Light Sixes and included the full range of body styles—roadsters, touring cars, coupe-roadsters and sedans. The long line of cars made an impressive spectacle as they passed through the streets of South Bend and crowds gathered along the route to admire the attractive lines of the new cars.

Such an unusual drive-away was made possible by the continuous, large demand for Studebaker cars from all sections of the country. All plants are running at capacity in an effort to meet this demand.



### Overland Champion Is Farmer's Friend

New Closed Model Is Beautiful All-Family Car with Wonderful Utility Qualifications

At last the farmer has been given a closed car of superior finish inside and outside, that he can utilize for various farm jobs and "chores" with the same cheerful abandon as he does his open touring car.

Thousands of farmers have expressed the opinion that they would gladly use closed cars if they could press them into practical work and get out of them the same all-around service the touring car provides.

This has been the farmer's winning argument for the touring car over the closed car for some years and it is admittedly a reasonable one. Practical service on the farm means the hauling of grain and other material of a highly "spillage" nature. A load of bran or shorts for instance leaves a car resembling the interior of a feed grinding room. Whole grain, despite every precaution, will persist in "creeping" out of the bags and scatter to every corner and crevice of the car.

Summing up "practical service" for the farmer means the hauling of milk cans, live poultry, root crops, cans of kerosene, machinery oil, household supplies, garden tools, implement parts, rolls of belting and a long list of every conceivable sort of usable material on the farm from wire fencing to an occasional live calf.

No wonder the farmer hesitated to invest his money in a closed car. But now the wonder ceases with the advent of the new Overland closed car, fittingly named the Champion, for the good and logical reason that at last it leads the world in closed car values and "champions" the cause of the farmer in every respect.

This new model, having as many personalities as a South American personality, can proudly claim the distinction of being called "America's most versatile car" for in introducing the Champion Willy-Overland has succeeded in bringing out something absolutely novel and radically unique;

in fact, a type of motor car that the farmer has long wished for—and now has. It is probably the most extraordinarily useful car for the farmer that has ever been produced, with an all-steel body built on a standard Overland chassis cradled on the famous Triplex springs and powered with the larger Overland engine. Exclusive features, utilities and economies mark this model as a remarkably convenient car, warranted to give the utmost in closed car benefits to the farmer.

In the Champion, the rear seat and upholstery is entirely removable, providing fifty cubic feet of clear carrying space. Apart from this, both front and rear seats quickly adjust forward and backward. The front seat adjusts to three positions so that a tall driver can move it back to drive without leg cramp and a short driver can move it forward so as to reach the pedals without stretching. The rear seat can be adjusted backward so that rear seat passengers will not be crowded when the front seat is moved back.

Another clever feature of this car and characteristic of the unusual foresight in design, is the arrangement of both front and rear seats which with the upholstery can be entirely removed and made up into a luxurious bed in the car, occupying the whole length and width of the car. What a boon to the farmer and his family who want to spend the night away from home on a little hunting jaunt.

But this does not end the many amazing advantages included in the Champion and perhaps the most outstanding superiority from the farmer's viewpoint is the fifty cubic feet of space obtainable in the car by removing the rear seat with the upholstery. This arrangement leaves an absolutely clear carrying space capable of real service to the farmer who can load his tools, bags of fodder, produce, and so forth, into the car

through the wide rear door, with the satisfaction of knowing that the car can be thoroughly cleaned out later and the rear seat installed for passenger trips. The long grain Spanish upholstery is washable and wearable, to say nothing of being comfortable. Then on the back of the car is a commodious trunk of ample proportions with a warranted lock, in which there is plenty of room for personal effects when traveling or shopping in town.

The Champion is solidly built with that thoroughness of workmanship characteristic of all Willy-Overland products. The unusually clever general utility points of this exceptional car are the result of long and careful study on the part of the designers, who had in mind at all times the farmer and his particular needs, and for this reason the Champion will have a strong appeal to the man living away from the metropolitan centers.

### GARDNER BRAKES ARE ADEQUATE

Will Take Care of All Necessities Claim of Makers of Well Know Automobile

In perfecting the present Gardner braking system, brakes have been designed that are serviceable and dependable beyond the average—adequate for all necessities—convenience—and safety of the driver.

200 Square Inches Breaking Surface

There are no more reliable brakes on any car. Besides, they are simple in design, free of complicated mechanism, which means a lot to the owner in maintenance and adjustment cost. With 200 square inches of braking surface there is one square inch of braking surface for every 12½ pounds of car weight. There is no more use for having a car all brakes than all motor, or all something else. It is the balanced value that counts.

Efficiency of Four-Wheel Brakes In Doubt

The development of the four-wheel brake is undoubtedly creating a lot of interest and, under

certain conditions, such has a great deal of merit.

The Gardner Motor Company is now and has been for some time experimenting with such a braking system, and whenever one is found that is applicable—practical—and not dangerous for a car in Gardner use and type, it will be adopted. Meanwhile, here is a thought to keep in mind. The majority of automobile accidents are front-end collisions. Usually the front wheels pay the price in such collisions. Four-wheel brakes form a very intimate part of the front wheel construction, which means that in case of any accident to the front wheels this more or less complicated brake system on the front wheels is sure to be similarly affected, and the cost of repair and replacement very materially increased.

### Silverton Four-L Names Officers for New Term

SILVERTON, Or., Oct. 5.—(Special to The Statesman)—The Silverton 4-L association held its regular election of officers Wednesday night with the following results: Chairman, John Elder; vice chairman, George Tower; secretary, Robert Scott; local conference committee, T. Sanderson, chairman; S. Sammuelsen and Lewis Larson. This is one of the prominent organizations at Silverton.

## Ask them to show you a Car

WITH

1. Continental Red Seal Motor
2. Timken Axles with Timken bearings
3. Single Plate Disc Clutch
4. Durant Tubular Backbone—acts as a truss, making frame rigid
5. Spicer Universal Joints
6. Warner Transmission and Steering Gear
7. Oil Gear Pump assuring constant efficient circulation through cam-shaft and crank-shaft

at less than \$1000

AND THEY'LL SHOW YOU

# the Star Car

\$448.00

Roadster \$443 :: Coupe \$580  
Sedan \$645

F. O. B. Lansing, Michigan

The World's Lowest Priced 3-Speed, Fully Equipped Motor Car

### Salem Automobile Company

F. G. DELANO Salem, Ore. A. I. BOFF

Associate Dealers:

Allen Bros. Silverton	Grand Ronde Garage.
Peter Deldrich, Stayton	New Grand Ronde
J. W. Berkeley, Woodburn	M. J. O'Donnell,
Dallas Garage, Dallas	Independence
Service Garage, Mt. Angel	Graham & Calbreath,
C. H. Ernst, St. Paul	Monmouth

### Endowment and Loan Fund Opposed by PEO Women

SEATTLE, Wash., Oct. 5.—A concerted drive to raise the \$1,000,000 endowment and loan fund which constitutes the major phil-

anthropic work of the PEO Sisterhood, was voted down at the final sessions of the 25th biennial convention of the order here today. The fund proposal, however, was endorsed and many members contributed large sums at the meeting.



STILL going strong after 18,000 miles on heavy stages over tire-eating mountain roads—is one of a thousand examples of the superiority of C-T-C tires. They won't skid, either. Come in and take a look at them.

We want you to place at least one C. T. C. Cord Tire on your car on our highest personal recommendation. This remarkable tire will do the rest.

Columbia Tire Corporation  
Factory Branch

CARL E. HULTENBERG, BRANCH MANAGER,  
477 Court Street.

Smith and Watkins, Federal Tire Service; Vick Brothers; Ira Jorgensen; Other Dealers Throughout the Country.

C-T-C TIRES AND TUBES

### Filipino Legislators May Return to Native Dress

MANILA, Sept. 1.—(By Mail).—Restoration of the colorful native "barong" as the attire of Filipino legislators, is proposed in a resolution submitted by Representative Rafael Villaneuva in the house of representatives.

Heretofore native lawmakers have sported the approved American dress, but many believe it would be more patriotic to return to the original fashion of the Philippines.

The "barong" is a shirt-like garment, with a narrow neck-band and takes the place of both shirt and coat. Worn outside the belt of the trousers, it gives Americans the impression that the wearer had dressed hastily and neglected to tuck his shirt into his trousers.

Representative Villaneuva's resolution, recommending a boycott of foreign apparel, affects women's dress as well, and bans all evening gowns made of imported materials.

Coming!

NEW Overland CHAMPION

America's only Versatile Car

VICK BROTHERS  
High St. at Trade

# GARDNER

Motor Car

## A Car the Women Like

THE easily operated clutch and brake, the long shifting lever, the hand brake with spoon type lever release, and the rear vision mirror afford an ease and convenience in operating the Gardner sedan that especially appeals to the women folks.

The wide, deep seats, the open-car ventilation for driving in warm weather, Perfection heater for protection in cold weather, metal sun visor, satin window shades, and dome light, contribute to their comfort.

The outside body finish in Crane-Simplex Duotone, the luxurious blue cut velvet upholstery, and the inside body hardware of Colonial design in silver finish lend that atmosphere of distinctiveness which the average woman so ardently desires and appreciates.

F. W. PETTYJOHN CO.  
119 N. Commercial St.

# GARDNER

Motor Car