

AUTOMOBILES, TRUCKS AND TRACTORS

MOTORCYCLES — BICYCLES — ACCESSORIES

"More Miles Per Car"
Ray McNamara's
Tips for
SUMMER
Trips



CAMPING OUT REDUCES COST ON LONG TRIPS

It is a well known fact that it is very hard these days to obtain hotel accommodations in large cities for less than \$3 per person, even when doubling up in the same room. This rule will also apply in great many of the smaller cities. Add to this one dollar per person for the average meal in a reasonable price restaurant, and you will have a fixed expense of \$4 per day, not counting car expense and miscellaneous items. This amount might seem trivial to a great many tourists that are not blessed with a large family. However, a reader with a family of eight children, writes and asks if his car will carry the necessary camping equipment safely, in addition to his large family on a trip of approximately 1000 to 1500 miles.

With hotel accommodations, meals, etc., averaging around \$6 a day per person, and the fact that a well managed camping trip will not cost more than \$1 per day per person, you can readily appreciate the sum that this party will save on a seven to ten day trip. You can do likewise, the longer your tour, the greater the saving. The cost of a very elaborate and expensive camping outfit can be offset with a four passenger party on a two weeks tour. The next question of importance to this reader or any tourists with large families, is where can all the necessary camping equipment

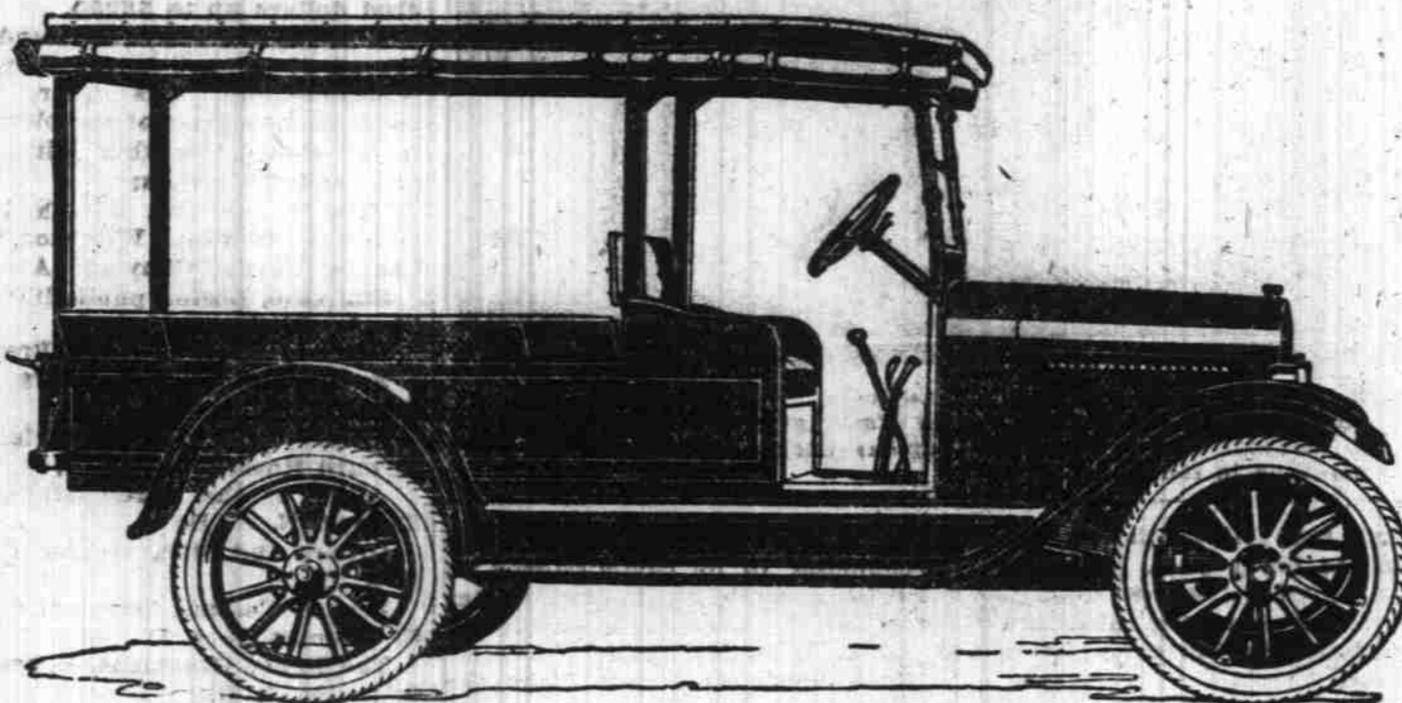
be carried, and what is a safe overload.

In connection with cooking utensils, light camp-stoves and food supplies, these can be carried most conveniently by mounting a light wood cabinet, bolted to the left running board. This can be built from light tough wood, lined with water-proof material inside and out. An imitation leather covering on the outside will add to appearance. The door should be hinged at bottom, so that when opened it will fold down and form the camp table. The space inside can be designed to have shelves or drawers of a size suitable for each article, or group of articles, in connection with kitchen, dining and pantry departments. The size of the box can be varied to suit your requirements and by attaching to running boards with screws and wing nut, it can be attached and detached readily when not in use, or to suit your camping layout.

In connection with tents, it is well to get a catalog from some manufacturers specializing in auto tents. These can be purchased in almost any shape or form, and of very light water-proof material that will fold into a very compact parcel. Heavy canvas and tarpaulin tents, on account of their weight and bulk, are less desirable, but cheaper.

The most desirable style of tent for auto camping is one that can be suspended between trees, or from the side of car. If you must carry tent poles of any

CHEVROLET LIGHT DELIVERY TRUCK



The new light delivery Chevrolet truck is proving a popular medium, for business concerns of the country at large. It is fully equipped with self starter, speedometer, lights and everything that goes to make it a serviceable truck for the merchant or farmer that has use for a truck that will deliver thoroughly efficient and economical transportation. Delivered to the Salem business man or farmer, this truck will cost \$627.00, ready for immediate service.

length, these should be made of light metal tubing, or pipe in three foot lengths with reducing sleeves at the joints, so that they can be telescoped into each other for convenience in carrying.

The tent and bedding can be strapped to car between fender and hood and should be wrapped well to prevent moisture and dampness.

Baggage should be limited to necessities: khaki suits, clean linens and one spare suit; extra apparel of fashion should be shipped by express to the week-end points or to places where you plan more than a one night stand. Baggage and other equipment should be strapped to the left running board

WILLYS-OVERLAND PRICES REDUCED

Notification of Cut in Willys-Overland Line Surprises Motor Industry

TOLEDO, Ohio, Aug. 25.—John N. Willys, president of the Willys-Overland company, Toledo, Ohio, today caused a furor in automobile circles by his announcement of immediate price reductions and great improvements in the 1923 Willys-Overland lines.

This action embracing a drop in price on the Willys-Knight touring car and roadster from \$1235 to \$1175, L.o.b. factory, and on the Willys-Knight coupe-sedan from \$1595 to \$1550, came as a distinct surprise to the automobile industry and motoring public in view of the advance in price made by not a few manufacturers in

in sufficient quantity to balance the car evenly.

The question of blankets, cots and other equipment for sleeping is probably the most serious one. Two good wool blankets are essential to comfort of each person on cool nights, particularly in high elevations. In addition to this a good pad or blanket is necessary beneath when sleeping on the ground. Following damp nights these should be permitted to air and dry thoroughly before breaking camp, as they will not dry when rolled up.

Sleeping cots are only big enough for one adult and make a bulky load and are quite heavy. Provisions should be made for carrying these on rear of car, when baggage is placed on running board. A suitable carrier can be made of wood slats, supported on strap iron frame, or trunk carrier for rear can be purchased in supply houses. With more than four passengers, the best method of sleeping is to dispense with cots and purchase a ball of hay or straw from the nearest town or farm house, spread this evenly under your tent, then cover with blankets. In my experience this is more comfortable than a cot, and can be purchased conveniently at most any farm or town at small cost. It beats carrying cots or impossible mattresses.

Camping equipment and baggage means overload for any passenger car, regardless of its capacity. When overloading, always travel on reduced schedule. In case of excessive overload on long tours (more than four passengers) it would be well to add another leaf to springs to prevent from bumping axles on rough roads. Most any car will carry a thousand pound overload safely, if the springs are stiffened up sufficiently and car driven carefully to preserve life of tires, axles, clutch, transmission, etc.

Other useful camping utensils are small auto shovel, hand ax and first-aid medicine kit.

For the owner's scrapbook:

Last week—Watch Your Cooling System.

Next Week—Important Equipment for Short or Long Vacations. (Copyright 1923 by The Christy Walsh Prudicate.)

announcing their 1924 models.

The new values in Willys-Knight and Overland cars are the direct result of the wonderful sales and production records made by the Willys-Overland company this year, eclipsing any previous period in its history, which determined the officials of the company to share with the public the appreciable saving in costs made possible by an enormous increase in business.

Mr. Willys added that in every detail all the advantages of the Willys-Knight car have been retained, while improvements have been added, making this car, powered with the famous Willys-Knight sleeve-valve motor, a bigger value than ever before.

This announcement has great significance because it marks a new valuation record for automotive products in the face of a generally rising market in raw materials.

TWO ENGINEERS RESIGN PLACES

Whitmore and McLeod Accept Positions With California Commission

Resignations of J. C. McLeod, division engineer, and O. H. Whitmore, market road engineer, were announced yesterday by the state highway department. Both will leave to accept positions with the California state highway commission which are said to require greater responsibility and offer greater opportunities. Whitmore is assigned to San Francisco and McLeod to Sacramento.

In line with the policy of the department promotions to fill the vacancies have been made from the ranks of present employees. J. S. Sawyer, now employed as resident engineer at Springfield, succeeds McLeod, and J. H. Scott succeeds Whitmore.

McLeod first entered the department in 1914 as resident engineer in Clatsop county. He was assigned to construction work in southern Oregon in 1917, and

since 1918 has been division engineer in charge of all work in Benton, Lincoln, Lane, Linn, Eastern Douglas and Southern Marion and Polk counties.

Whitmore came to the department in 1917 from Multnomah county where he was employed as assistant engineer on the county paving program. He has served the state highway department as division and assistant engineers and for several years has been in charge of the market road division.

Ohio, next month. Should any E. V. Blankenship will make the team, or of the two alternates be two alternates in the recent, unable to make the trip, Sergeant test at Clackamas.



Dayton and Columbia

Bicycles, Tires and Parts

A new shipment of bicycle lamps just in. Better get one before the cop gets you.

Lloyd E. Ramsden
387 Court St.

Announcing New WILLYS-KNIGHT and OVERLAND 1924

Lower Prices and great Improvements

These tremendous new values are the direct result of the greatest sales and production period in Willys-Overland history. We believe nothing else compares with them.

| | |
|---|------------|
| Willys-Knight 5-Pass. Touring..... | Now \$1395 |
| Willys-Knight 2-Pass. Roadster..... | Now 1395 |
| Willys-Knight 5-Pass. Coupe-Sedan..... | Now 1805 |
| Willys-Knight 5-Pass. Country Club..... | Now 1635 |
| Willys-Knight 5-Pass. Sedan..... | Now 2060 |
| Willys-Knight 7-Pass. Touring..... | Now 1670 |
| Willys-Knight 7-Pass. Sedan..... | Now 2275 |

Bigger, Much More Powerful New Engine in All Overland Models

| | |
|---|-----------|
| Overland Touring with bigger new engine..... | Now \$666 |
| Overland Roadster with bigger new engine..... | Now 666 |
| Overland Coupe with bigger new engine..... | Now 960 |
| Overland Sedan with bigger new engine..... | Now 1035 |
| The Big, Powerful Overland Red Bird..... | Now 910 |

In every detail, all of the superior Willys-Knight and Overland qualities, features and improvements are retained. Nothing has been spared to insure the continuance of Willys-Overland leadership in value.

Comparison has resulted in an enormous increase in sales for Willys-Overland this year. A new comparison of these new values we believe will sweep aside every other standard that your previous observation has set up. Come in and see for yourself.

All prices F. O. B. Salem. We reserve the right to change prices and specifications without notice

Vick Brothers
High Street at Trade

Smart Effects For Smart Cars

Don't spoil the fine lines of your car with a drab, commonplace, cheap painting job—have it painted HERE a distinctive, refined, well balanced color scheme by our skilled, experienced COACH PAINTERS. Smart effects for smart cars at prices that don't smart.

RELIANCE AUTO PAINTING CO.
Phone 937
219 State Corner Front

INTEGRITY SERVICE

1924 MODEL

THE STUDEBAKER LIGHT-SIX FIVE-PASSENGER TOURING CAR \$1210.

130,000 Owners Know the Value of this Studebaker

Every unit in the new 1924 Studebaker Light-Six Touring Car has proved its dependability in public use.

There are refinements and improvements, of course, but the underlying principles of design and construction which have made enthusiasts of 130,000 purchasers of this model in three years' time, are not radically changed.

In our opinion, the 1924 Light-Six stands out as the greatest value and closest approach to mechanical perfection in moderate priced cars yet produced.

It is practically free from vibration. Studebaker accomplishes this largely by machining the crankshaft and connecting rods on all surfaces. This requires 61 precision operations. It is an exclusive Studebaker practice on cars at this price—and is found only on a few other cars—and they're priced above \$2500.

Absence of vibration prolongs car life, causes slower depreciation, reduces the cost of operation and adds to the enjoyment of driving.

The Light-Six motor embodies the most advanced design known to automobile construction. It represents an achievement in the manufacture of quality cars in big volume.

Aside from its mechanical excellence, the Light-Six is handsome in design, extremely comfortable, sturdy and economical to operate just as it is in initial cost. It is powerful, speedy, has a pick-up range that is seldom taxed and never exhausted, is easy to handle, and convenient to park.

Its enameled all-steel body, one-piece, rain-proof windshield, ten-inch cushions upholstered in genuine leather, and cowl lamps are among many features heretofore to be had only in higher priced cars.

For 71 years the name Studebaker has stood for unflinching integrity, quality and value.

New all-steel body of striking beauty. One-piece, rain-proof windshield with attractive cowl lights set in base. Quick-action cowl ventilator. Door curtains, bound on three sides by steel rods, open with doors. Removable upholstery in tonneau. Door pocket flaps with weights hold them in shape. Upholstered in genuine leather. Large rectangular window in rear curtain. Thief proof transmission lock. Standard non-skid cord tires, front and rear.

| 1924 MODELS AND PRICES—F. O. B. Salem. | | |
|--|--|--|
| LIGHT-SIX 5-Pass., 112" W. B., 40 H. P. | SPECIAL-SIX 5-Pass., 119" W. B., 50 H. P. | BIG-SIX 7-Pass., 126" W. B., 60 H. P. |
| Touring..... 1210 | Touring..... \$1595 | Touring..... \$2040 |
| Roadster (2-Pass.)..... 1190 | Roadster (2-Pass.)..... 1575 | Speedster (5-Pass.)..... 2130 |
| Coupe-Roadster (2-Pass.)..... 1450 | Coupe (5-Pass.)..... 2295 | Coupe (5-Pass.)..... 2895 |
| Sedan..... 1795 | Sedan..... 2375 | Sedan..... 3125 |

STUDEBAKER
MARION AUTO CO.
235 So. Com'l Open Day and Night

THIS IS A STUDEBAKER YEAR

POWER & COMFORT