

Society

By MARGUERITE GLEESON

Mrs. H. G. C. Baldry and her little daughter, Ruth Adele, from Neesho, Missouri, arrived in Salem last night and will be guests of Mrs. Baldry's parents, Mr. and Mrs. Warren Armington.

Miss Dorothea Steusloff is hostess this week-end for a house party including several Salem friends. The guests include Mrs. Monroe Gilbert, Miss Bertha Davis, formerly a professor at the Oregon Agricultural and now at Mills college; and Miss Louise Williamson. The guests will be entertained at the Steusloff cottage at Pacific City for the week-end.

Mrs. John Graham has had as her guest this week, Mrs. Ruby Flint Hughes of Paris, France. Mrs. Hughes is spending several weeks in Oregon and is located at the Portland hotel. She formerly lived in Salem.

Mr. and Mrs. RexMcCorjey and their two daughters, Margaret and Elizabeth, are guests of Mr. and Mrs. Fred Waters. Their home is in Pasadena.

CLUB PROGRAMS

Summer months were meant for rest, recreation and play of various kinds, another use for summer is a time when club programs may be worked out for the coming year's study and work.

Club programs are in various stages of preparation now. One or two are completed to the final detail, even the printing of the year book and calendar, others are all down in black and white ready for the printer, in case the club has the programs printed. A few are only in the minds of the committee in charge while others have not even reached the state where even the committee has been selected.

Chapter G of the PEO has the coming season's program all planned, written up and printed within the booklet cover which the group has used for some time. The whole carries on the color scheme of the sisterhood with cover of mottled white and pages of yellow.

A birthday meeting will open the group's year September 6 when the members meet with Mrs. W. H. Byrd. Mrs. E. E. Fisher and Mrs. O. E. Price are in charge of the program that day. A social musical program will be one of the features of another day's meeting. During the year a special study will be made of Canada its cities and educational facilities. Later the members will study South America and its peoples with a special study of Argentina. "The Roof or South America," is one day's topic.

A mothers' day program will be given in May and the organization will hold the usual picnic in June. The program committee is composed of Mrs. W. T. Kirk, Mrs. B. X. Beechler, and Mrs. A. Godfrey. Other committees are social, Mrs. G. W. Lafler, Mrs. W. W. Moore, Mrs. C. B. McCulloch and Mrs. E. E. Fisher; philanthropy, Mrs. F. W. Seeles, Mrs. William McGilchrist; flowers, Mrs. B. J. Miles and Mrs. P. J. Kuntz. The visiting committee is the whole membership of the organization.

The Chemeketa chapter of the Daughters of the American Revolution will open the season's work with an open meeting in the

Chamber of Commerce rooms, September 17, Constitution day. The program committee is hoping to arrange for have Governor Walter M. Pierce deliver the address that day. Among the plans for the coming year's work among the DAR are a further study of the constitution which was also studied last year, a special Indian-day with the aid and cooperation of the Salem Indian school at Chemawa.

Miss Edith Benedict is chairman of the program committee and other members are Mrs. W. C. Tilson, and Mrs. A. A. Underhill. Mrs. Russel Catlin is regent of the local chapter.

The Salem Etokta club will continue its study of Oregon which was begun last year. The group will resume meetings in October.

The Salem library has a number of books and magazine articles which are considered of special value to committees which are preparing programs for the coming season.

Among the books suggested by Miss Flora Case, librarian, are "Work and Programs for Women's Clubs," by Caroline Benton. Then there is a group of books, "Views in Travel," "Essays," and in "Biography" which she considers specially helpful. Then there are a number of outlines for American literature, local and state government for Oregon and Oregon history.

In addition to all of these helps the library staff is happy to assist in planning and working out any program desired by the organization, Miss Case states.

The Drama class which meets at regular intervals during the season will study some form of modern drama although no definite plan for the year's study has been decided upon according to Mrs. W. E. Kirk who has been leader of the group for several seasons.

BOOKS

Interesting new books are included in some of the new lists just published.

"The Dominant Sex," by Mathilde and Mathias Vaerting, and translated by Eden and Cedar Paul. The authors show that there are no "masculine" or "feminine" characteristics, but only those of a dominant and a subordinate sex. In various societies at various periods, woman has been dominant and has then exhibited the so-called "masculine" traits and characters, even to physical superiority over the man. "American Poems," by J. C. Squire. A new collection of Mr. Squire's serious verse. One of the longest poems describes his visit to the Chicago stockyards.

"The Making of the Western Mind," by F. Mellan Stawell and T. S. Marvin. Traces the European cultural heritage from the days of the Greeks to the present. "Training for Power and Leadership," by Grenville Kleiser. This book contains the harvest of Mr. Kleiser's long experience in training men for leadership. "English Diaries," by Arthur Ponsonby. Excerpts from and brief accounts of all diaries of interest from the 16th to the 20th century. Edward VI., Fanny Burney, Fanny Kemble, Byron, Queen

Victoria, W. N. T. Barbellion and, of course, Pepys and Evelyn are among those represented.

"The Spirit of Islam," by Syed Ameer Ali. The only book in English recognized as an authentic interpretation by the Mohammedan centres of instruction.

"Snake Doctor," by Irvin S. Cobb. A collection of short stories headed by the story which won the O. Henry memorial award for 1922. The range is unusually wide, but Old Judge Priest is not missing, and "The Night of the Wedding," by C. N. and A. M. Williamson.

LUMBER GRADING CLASSES FORMED

J. W. Graham Appointed Instructor—Will Work With Oregon Mills

J. W. Graham, Oregon Agricultural college, class of 1911, has been selected by A. R. Nichols, state supervisor of trade and industrial education, to teach a series of classes in lumber grading in connection with several of the larger mills of the state. He has had 10 years' experience in mill work.

The appointment was announced yesterday by J. A. Churchill, state superintendent of public instruction.

"The students, who are mostly workmen from the mills," said Mr. Churchill, "do the actual grading under the supervision of the instructor. The first class will consist of 15 students from the Hammond Lumber company mills at Mill City. The two-weeks' course will later be given at Cottage Grove, Dallas and Mabel. After these four points have had two weeks each, Mr. Graham will return to Mill City and repeat the two-weeks' schedule with more advanced work.

"The state board for vocational education pays one-half of the instructor's salary. The local company and the school district pay the other half and the instructor's expenses. The state fund for this purpose is furnished by the federal government under the Smith-Hughes act.

"The classes are not confined to lumber grading but may be used in any part of the lumber industry. The most important element in this work seems to be selecting as instructor a man who possesses trade experience, combined with the proper teaching qualifications.

A prominent Oregon lumberman recently declared that he believed this the most valuable work done by the lumber companies in many years.

CHEVROLET SECOND BEST SELLER HERE

State Records Show Chevrolet Most Popular Car in its Class in State

G. L. Newton of the Newton-Chevrolet agency has gathered some very interesting automobile figures from the state records showing the number and kind of new cars registered in the state during the first six months of 1923.

There were 16,416 new cars sold and registered, and the following list shows the number sold of each make of the most popular kinds. The figures speak for themselves, and will prove of importance to dealers at large. This lot included 16,000 cars, the other 416 registered were divided among the miscellaneous lot of cars.

- Ford, 6402.
- CHEVROLET, 2576.
- Star, 1414.
- Buick, 1242.
- Dodge, 937.
- Overland, 633.
- Studebaker, 506.
- Oldsmobile, 305.
- Maxwell, 262.
- Durant, 244.
- Jewett, 229.
- Hupmobile, 194.
- Hudson, 151.
- Willys-Knight, 149.
- Essex, 123.
- Franklin, 121.

Wood Urges Filipinos to Enlarge Foreign Business

MANILA, July 26.—The business of the Philippine Islands must be increased if the country expects to extend its activities in schools, Governor General Wood declared in a statement today. He said there is a large market in the United States for the products of the Philippines, and all that is needed to increase business is a little attention from this end.

"I want to call the attention of Filipino manufacturers to the possibilities of a greatly increased market for native hats for both men and women in the United States," said General Wood. "The embroidery business of the Philippines has been built up from almost nothing to \$2,000,000 annually. There is a market for many times the output of Philippine furniture which we are now putting out."

NEW 1924 MODEL JUST ANNOUNCED

No Radical Changes—Number of Refinements and Improvements Made

The 1924 model Studebaker cars, described as the finest cars and greatest values Studebaker has ever offered, are announced by Marion Automobile Company, local Studebaker dealer.

They are offered in 3-cylinder chassis models—the Big Six, the Special-Six and the Light Six—in 12 body types. There are no radical changes but every improvement, the safety and practicability of which have been verified by Studebaker engineering tests, is embodied in these new cars.

The Big-Six Line The Big-Six line comprises four models, mounted on the standard 126-inch chassis with 60 horsepower, 3 1/2 x 5 inch motor. They are: Seven passenger touring car, five passenger speedster, five passenger coupe and seven passenger sedan.

Refinements and a few minor changes have been made in the Big-Six which has established an enviable record for 5 years. Everything for which one can wish in motoring comfort, convenience and utility has been provided.

The 1924 series Big-Six carries disc wheels and front and rear bumpers as standard equipment. An extra wheel, complete with cord tire, tube and tire carrier is provided on each Big-Six model (two on speedster and sedan).

Other striking features of the touring car that add to its completeness include the one-piece, rain-proof windshield with glare-proof visor, rear-view mirror and automatic windshield cleaner; walnut all-wood steering wheel with new type spark and throttle control; automatic gasoline signal mounted on the instrument board; aluminum-bound running boards with corrugated rubber mats and step pads and aluminum kick plates; quick action cowl ventilator; clock; courtesy light; cowl lights, tonneau lamp with long extension cord and combination stop and tail light; grip handles on body rails; tool kit in left front door; snubbers, and others.

The sedan, coupe and speedster are equipped with a large, roomy trunk, while the closed cars have among other desirable features, heater, flower vase, interior reading lights, and, in addition, the sedan is furnished with silver finished vanity case and smoking set.

The Special-Six Models The Special-Six line comprise four models, mounted on the standard 119-inch chassis with 50 horsepower, 3 1/2 x 5 inch motor. They are: two passenger roadster, five passenger touring car, five passenger coupe and five passenger sedan.

Radiator, hood, cowl, and body changes have been made in the Special-Six, with minor mechanical changes and refinements in the chassis. The Special-Six has for five successive years added luster to the name STUDEBAKER. It is one of the most satisfactory and finest cars on the market. It is as good in every respect as the Big-Six, except that it is smaller, and costs less to produce, and therefore sells for less.

All Special-Six models are equipped with a one-piece, rain-proof windshield which provides unobstructed view of the road ahead; glare-proof visor, automatic windshield cleaner and rear-view mirror; running board step pads and aluminum kick plates; American walnut all-wood steering wheel with new type spark and throttle control; cowl lights, combination stop and tail light; quick action cowl ventilator of cast aluminum and an 8-day clock.

An inspection lamp is mounted on the instrument board of the open cars and in the touring car a complete tool kit is carried in the left front door (left door in the roadster.) Grip handles on the



With our painting the sport-lines of the car are properly accentuated and the color scheme novel but appropriate.

For a "different" and better job let us quote you and offer suggestions.

RELIANCE AUTO PAINTING COMPANY Phone 937 219 State, Corner Front

body rails are a feature of the touring car.

The closed cars are furnished with a high grade heater and silver finished flower vase, and, in addition, the sedan is fitted with handsome vanity case and smoking set carried in the back of the front seat.

The Light Six Line The Light-Six line comprises four models, mounted on the standard 112-inch chassis with 40 horsepower, 3 1/4 x 4 inch motor. They are: three passenger roadster, five passenger touring car, two passenger coupe-roadster and five passenger sedan.

No body or mechanical changes except refinements have been made in the Light-Six. Over 130,000 Light-Sixes have been produced in the new, modern \$30,000,000 Studebaker plant at South Bend, Ind., under most economical and almost ideal manufacturing conditions.

The beauty of design, exceptional performance and low upkeep expense leave nothing to be desired in the 1924 model Light Six touring car. Among the usual features found on this model are the all-steel body, one-piece, rain-proof windshield with cowl lights set in the base; the quick action cowl ventilator, easily adjusted by a twist of the wrist; close fitting curtains; genuine leather seat cushions, 10 inches deep; large rectangular window in the rear curtain and the theft-proof transmission lock, all of which clearly indicate Studebaker's efforts to give unmatched value in its lowest priced five passenger touring car.

The closed cars are equipped with glare-proof visor windshield cleaner, clock, coach lamps and many other desirable features.

Very Hot at Spokane, Report of Mr. Chapin

"It's been insufferably hot up at Spokane," is the verdict of L. J. Chapin, who has returned from a convention of the federal land appraisers of the 12th district, comprising the states of Oregon, Idaho, Washington and Montana. Mr. Chapin is the special appraiser for the Northwestern Joint Stock Land bank of Portland, organized under the federal act and operating in the Willamette valley.

"It was hot in the Palouse country, where they nevertheless have a great grain crop. All over the 12th district big crops are reported, even over in Montana, where they say they have the first really good crop in six years. They have had drought and grasshopper

pests and cutworms and various other pests, besides their politics, but this season their grain is fine. Rains that are described as 'excessive,' have fallen over many portions of the district, and some down grain is reported, but they will have it for feed, anyhow, and the grain left standing is still the biggest crop they have had in years.

"It is the general opinion of the appraisers, who were reinforced by representatives of the

federal bank at Washington that the bottom low values has been reached, and that prices and real values will go steadily, if slowly, upward. The general note of optimism is most encouraging."

Other appraisers went from Roseburg, Eugene, Bend, and one or two other points in Oregon.

They are trying to find out how the women voted in Minnesota. True to form they apparently plugged for the man who made the most noise.

CALLS FOR AIRPLANTS MILAN, July 26.—Balked recently in a desire to fly to Mt.

SPEAKING OF THE DAILY OUTPUT OF AUTOMOBILES

You Should Read This

Chevrolet is making about 2,000 cars a day
Buick is turning out over 700 a day
Dodge Brothers are making over 700 cars a day
Durant and Star over 500 cars a day
Overland and Willys-Knight close to 400 a day

There's a Reason

Better Drop in and Let Us Explain It

NEWTON-CHEVROLET COMPANY

227 High St., Salem, Ore.

You'll Be Surprised

When You Look at the Speedometers on our

USED FORDS

Some have been run less than 200 miles.

IT'S OUT OF THE ORDINARY

To be able to buy used Fords that can hardly be told from new. We have Fords with motor numbers 7506237 and 7466058; this means that these Fords arrived on the coast from the factory less than THREE WEEKS AGO. Here's a few picked at random from our stock:

Ninety Days Service on Cars in this column

- 1923 Coupe, cord tires, car like new for \$550
- 1923 Sedan, cost \$850 and has been run less than 1300 miles. Our price on this one is \$625
- 1923 Touring, Stromberg carburetor and other extras; cost \$535, the motor number is 7506237 and it has run less than 200 miles. It is yours for \$450
- 1923 Touring, large steering wheel, new tires; you can't tell that it has ever been run. Motor number 7466058. Some would call it a new car but at our price it is yours for less.
- Late 1922, one man top and car is just as good as new for \$350
- Late 1922, new rubber, shocks, etc. In the pink of condition \$375
- Late 1922, just like new. Ruckstole two speed axle, cord tires and its yours for 450
- Several others in this class.

These cars are all in good shape.

Some thoroughly overhauled

- 1918 Ford Delivery, good rubber, just been overhauled \$115
- 1917 Ford Touring, a good buy, and car with lots of service \$75
- 1921 Roadster, starter, good rubber and newly overhauled \$225
- 1021 Touring, slightly used tires, and motor in dandy shape \$225
- 1921 Touring, good rubber, demountable rims, recently overhauled. Our price on this one \$250
- 1921 Ford Roadster, new tires all around, good top, upholstery, like new. Special price \$250
- 1918 Buick Six in good shape, has two Kelly cords (new), spotlight, etc. To move it quickly \$295

USED CAR CORNER

Ferry and Commercial—Terms

OPEN EVENINGS AND SUNDAY

FIRE SWEEPS IDAHO MINE—400 HOMELESS.

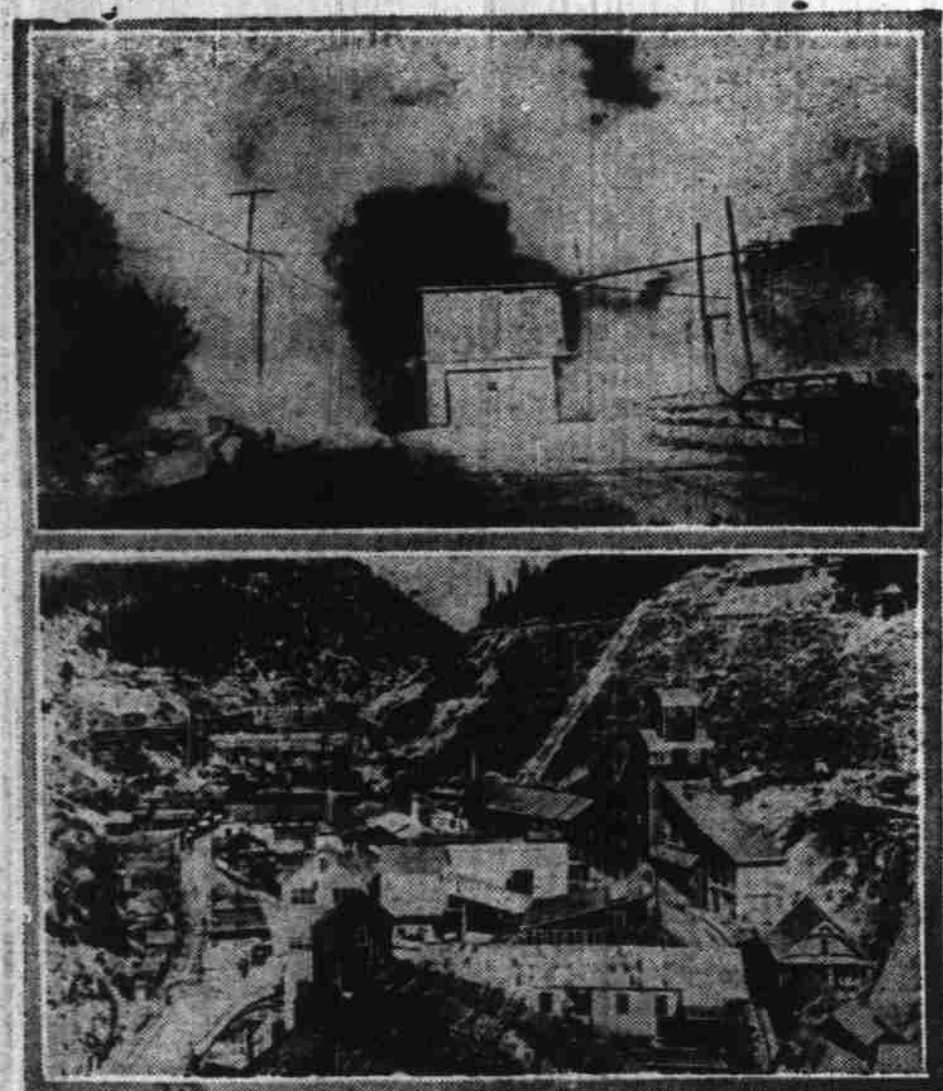


Photo shows (bottom) the great Hecla Mine works and part of the little town of Burke, Idaho, as they were before being swept by fire. (Top) the railroad station at Burke, burning during the great fire which rendered more than 400 miners in Burke and the nearby town of Mace homeless. Damage is estimated at \$1,500,000, for not only was this huge mine works wrecked, but the fire entirely destroyed Mace and swept away all of Burke except a small part of the residence district. Several hundred miners battled their way to safety from the depths of this mine after having been cut off by fire.