

The Oregon Statesman

Issued Daily Except Monday by THE STATESMAN PUBLISHING COMPANY 215 S. Commercial St., Salem, Oregon

DEHYDRATION DREAMS COMING TRUE Many readers of The Statesman are familiar with the subject of dehydration, for the editors of this paper have from the first been impressed with the great importance of this new method of food conservation.

Dehydrated products may go to the tropics or to the frozen lands near the poles, and be brought to the full excellence of fresh ripe fruits and vegetables right from the trees and vines by the mere restoration of the water taken out at the factory.

Dehydrated products may go to the tropics or to the frozen lands near the poles, and be brought to the full excellence of fresh ripe fruits and vegetables right from the trees and vines by the mere restoration of the water taken out at the factory.

There are a number of striking articles concerning dehydration in The Statesman of this morning. They show some new phases of a great vision.

SHAKESPEARE IN A TUXEDO In Birmingham, England, the other day an experiment in dramatic art, intended to prove that Shakespeare's plays were greater than any representation of them, ended in a ludicrous fiasco.

dispute between Sweden and Finland; the recommendation of adjustment of the dispute between Sweden and Finland; the recommendation of adjustment of the dispute between Poland and Lithuania over the seizure of Vilna; the threat of the economic boycott in Jugo Slavia and the Silesian dispute between Poland and Germany.

MEAT EXPORTS GROW Since the passage of the Fordney-McCumber tariff law, up to April 30, last, we have exported 559,351,000 pounds of meats valued at \$87,000,000, compared with \$83,000,000 worth for the corresponding period, October 1, 1921, to April 30, 1922, the year before.

CLASSIFIED ADS IN THE STATESMAN BRING RESULTS His face held the professional absorption which I often had seen upon it in the old times, and I knew that no woman's charm, no matter how potent, could stir him in his girding up of his powers for

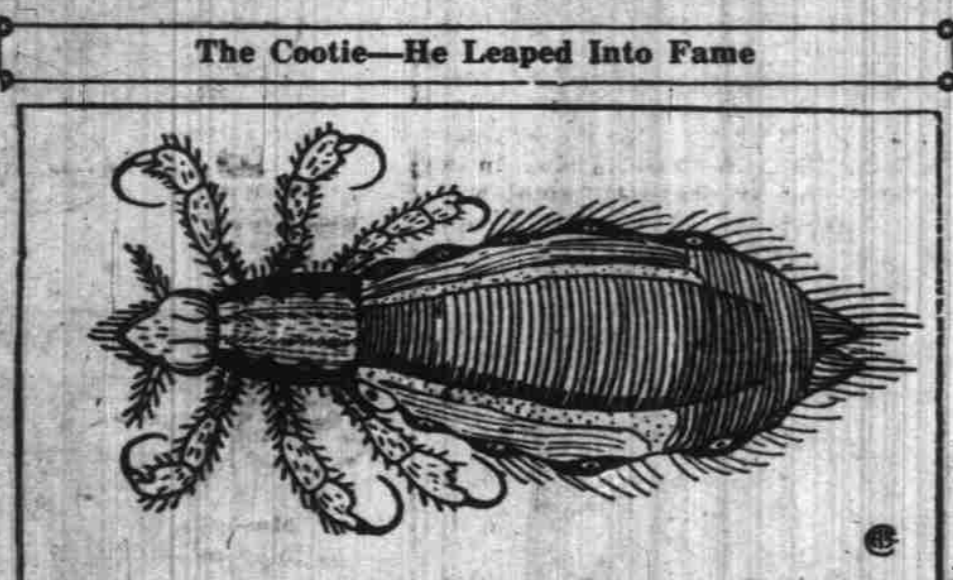
HOLDING A HUSBAND REVELATIONS OF A WIFE The next battle with Death which he must wage, I looked quickly, furtively at Miss Foster to see how she would relish this sudden shunting of her to the background.

THE QUESTION LILLIAN ASKED CHAPTER NO. 326 I waited with a good deal of interest for the reappearance of Miss Foster and Dr. Pettit at the hospital door.

TO DARKEN HAIR APPLY SAGE TEA Common garden sage, brewed into a heavy tea with sulphur, faded hair turns gray, streaked and faded hair beautifully dark and luxuriant.

THE BOYS AND GIRLS NEWSPAPER The Biggest Little Paper in the World

The Fun Box Such a Silly Diet Mary had a little lamb, Its fleece was black as ink; It chewed the paper off the wall And spat it in the sink.



Some Acrobat. Movie Director: "You have to do a number of falls. How are you on falls?" Applicant: "I rank next to Niagara."

three meals per day and taking 20 minutes to consume each meal. After the meal, the little pests usually crawl out and expose themselves for a little exercise and then retire to their favorite resting place, the seams of an undershirt.

THE SHORT STORY, JR. THE TADPOLE'S WISH "I wish I could live on the ground," The Tadpole said, swimming around.

She hated the water. She wanted to fly through the clear, blue sky. Benji knew of this wish of his little friend, and after he had become a frog he did not forget her.

OLD-TIMERS Traces of an ancient race existing more than 8000 years ago have been found under the peat beds dug up in Denmark.

BY WAY OF ILLUSTRATION What is the reason for assuming that participation in a World Court or membership in a League of Nations constitutes an embroilment in international affairs?

FUTURE DATES June 16, Saturday—County graduation exercises, Auditorium of Salem high school, 2 o'clock.

June 16, Saturday—Marion county Sunday school picnic. June 18, Monday—Opening, Daily Vacation Bible school.

Classified Ads in The Statesman Bring Results

See What's Coming Your Way A campaign has been started to shift the rural pedestrian from the traditional right side of the road to the left. This will enable him to see approaching traffic and avoid danger.