

MOON GOD'S SHRINE FOUND

Excavations in Ur of the Chaldees Uncover Interesting History

PHILADELPHIA, April 21.—Interesting reports are being received here on the archaeological excavations being made in Ur of the Chaldees, the ancient city that is being explored by the joint expedition of the University of Pennsylvania and the British Museum.

Wall Unearthed
Letters from C. Leonard Woolley, head of the expedition in Mesopotamia, describe the progress of the excavation, where diggers into the misty past have unearthed a portion of the wall of the temple of the Moon God, said by Mr. Woolley to be the oldest and largest temple of Babylon. While it is too soon to give details, it is believed

that the excavation of this temple will undoubtedly show continuous service dedicated to the Moon God covering several thousand years, and reaching backward possibly beyond the third millennium B. C.

Different Periods Seen
The wall shows several reconstructions, at different periods. On the upper part an inscription was found giving the name of Nebuchadrezzar as the restorer of the upper section, while another inscription shows that the main part was built by Ur-Ninur in the third millennium B. C.

While the chief popular interest in Ur of the Chaldees arises from the fact that it is mentioned in the book of Genesis as the birthplace of Abraham, scholars will find even greater interest in tracing its history backward through the millenniums that preceded Abraham, whose date was about 2000 B. C.

Natives at Work
The joint expedition of the British Museum and the University Museum was organized last summer and reached Mesopotamia in November. Work proceeded until the present time, as the climate has been particularly favorable for excavation. One hun-

and fifty natives have been kept at work, a light railroad has been laid down, and a house erected to accommodate the members of the expedition, which consists of Mr. Woolley, John Newton, archaeologist and architect, and Sidney Smith, reader of cuneiform writing.

Ur lies on the border of the Syrian desert six miles from the Euphrates and not far from the head of the Persian gulf, the nearest point of contact being Basra.

Heat Will Halt Work
It is planned to carry on excavations each season until the heat becomes intolerable about the middle of April. By employing from 150 to 250 men and utilizing as much modern machinery as is possible in scientific excavation, it is believed that a few seasons will uncover some of the more important parts of the city, and furnish an abundance of material for historical interpretation.

Ritual Elaborate
There was an elaborate ritual connected with the worship of the Moon God. A large number of priests were employed under the authority of the high prelate and, according to an ancient inscription, the last king of Babylon, Nabonidos, who lived in the sixth century, B. C., consecrated his daughter as high priestess and prophetess in the temple Ur. The inscription tells how she lived in her own house close by the temple, where a guard stood perpetually on watch. She was not only the high priestess, but the living oracle of the god.

As the calendar was based on the moon, it is supposed that the study of astronomy was one of the activities of the priesthood of the temple.

PHILLIPS DENIES HE KNOWS CARSON

Movements of Party Said to Be With Clara Phillips Being Traced

LOS ANGELES, April 21.—To establish that Armour Lee Phillips, out on bail following his arrest yesterday in connection with the escape of his wife, Clara Phillips, convicted murderer, aided in her escape, deputy sheriffs were today tracing the movements of Jesse E. Carson, who is said to be in Tegucigalpa, Honduras, with a woman suspected of being Mrs. Phillips.

That Phillips knew Carson and was with him shortly after Mrs. Phillips' escape from the county jail December 15, 1922, was definitely learned today through information reaching the sheriff's office.

Two motorcycle policemen of Lynwood, a suburb, arrested Phillips and it was learned Carson was in the car at the time.

Phillips has steadily denied that he knows Carson or that he has any knowledge of his wife's whereabouts. The sheriff's office is gathering evidence to the contrary to present to the court Tuesday, when a hearing on the writ of habeas corpus granted Phillips will be held. He was released today on \$3,000 cash bail.

WSC-GONZAGA SPLIT

PULLMAN, Wash., April 21.—The Washington State college and Gonzaga university, Spokane, split the honors in a double header today. The Cougars took the first game 6 to 2 while Gonzaga won the last 2 to 0. Washington State got four runs in the first inning of the first game. In the second, Gonzaga chased the two winning runs across in the sixth inning.

KELLS WILL BE FEDERAL AGENT

Government Employment Agency to Be in Operation Immediately

Beginning Monday, or as soon as he can be officially sworn in to the federal service, C. A. Kells, secretary of the Salem YMCA, is to be an official agent for the federal employment bureau, hunting jobs for men and men for jobs.

The Salem Y has been carrying on an efficient employment bureau for some years. Last year it secured jobs for several hundred men and boys; this year the demands for its services have promised to be even heavier than ever before. Secretary Kells thought that if the federal employment bureau would assist, the work might be carried on even more efficiently, and so, through the Chamber of Commerce, an application was made for the designation of Salem as a United States labor employment agency. This has been done, and word was received Saturday that Mr. Kells may begin work Monday.

The federal franchise will carry with it the privilege of franked mail for all the employment literature. The federal appropriation also helps to pay a full-time man in the Salem office.

Capt. A. M. Holbrook of the local Salvation army, is also preparing to do some extensive work in helping out the seasonal labor shortage. In May he is going to send out a series of letters to every Salvation army headquarters in the northwest, telling of the fruit labor necessities of the Salem district, and urging their cooperation in getting men and jobs together. This work will be done in cooperation with the Chamber of Commerce.

County Saves Money—The county, by cutting and

hauling its own wood instead of going into the open market to make purchases, is saving approximately \$900 a year, according to Commissioner J. T. Hunt, who returned from Hopewell yesterday where he made measurements of wood on the county farm. The contract for cutting the 300 cords has been let to Spees & Grader

at \$1.35 a cord, a saving of approximately \$1 per cord over the previous year. The contract for hauling the wood has not been given out as yet. However, an estimated cost per cord is placed at about \$2.35 this year.

Read the Classified Ads.

CHERRO PRODUCTS

Cherro Pancake Flour
Cherro Rolled Oats
Cherro Wheatola

These are now packed in 2 1/2 lb. and 3 lb. cartons, also in 10 lb. bags.

Call for CHERRO Products at your grocer.

NEW COLLARS For That Coat, Sweater or Dress



BERTHAS

In many different and pretty designs. White or Ecru.

\$1.25 to \$1.98

LACE FRONTS

with collars to match for sweaters.

COLLARS

For suits, coats, some have cuffs to match.

49 c to 98c



GALE & COMPANY

Commercial and Court Street

CHERRO COW CHOW

Is different than the ordinary dairy feed. It is composed of the ingredients that put your stock in first class condition. This feed is also strong enough that a large percentage of Mill Run can be used with good results.

CHERRO MOLASSES FEED

Is made from Coconut Meal, Oil Meal, Linseed Oil Meal, Mill Run, Molasses, and Clean Ground Out Hulls that contain 15% of the Grotes. Absolutely no screenings used in the manufacture of Cherro Molasses Feed. Cherro Molasses Feed contains 15% Protein and sells equal to Mill Run.

CHERRO CHICK MASH

Actual Analysis

Protein 16.7%
Fat 4.2%
Fiber 3.4%
Ash 3.7%

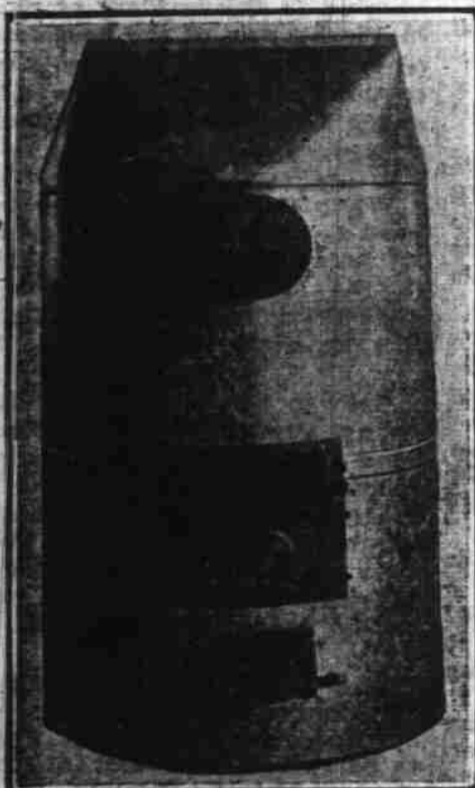
You do not need to change from a Chick Starter to a Chick Mash in seven days, as Cherro Chick Mash analysis is equal to other Chick starters. Why change feed when seven days old? It is not the best. Feed them Cherro Mash for six weeks, and pay no special price for starter mash.

Cherro Chick Mash at all feed stores at \$3.15 per sack.

Why pay more?

Patronize Home Industry

FUEL SAVER



PERFECT CONTROL

Get a

BERGER PIPE or PIPELESS FURNACE

At Factory Prices

Made in Salem

F. H. BERGER

Manufacturer
803 N. Liberty Street
Phone 1048-M

Drama League Takes No Action on Bennett Charge

IOWA CITY, Ia., April 21.—Charges by Richard Bennett, the actor, that the drama league of America is a community of "dumb-bells" and an organization of "low brows," were discussed at the closing session of the league's annual convention held here.

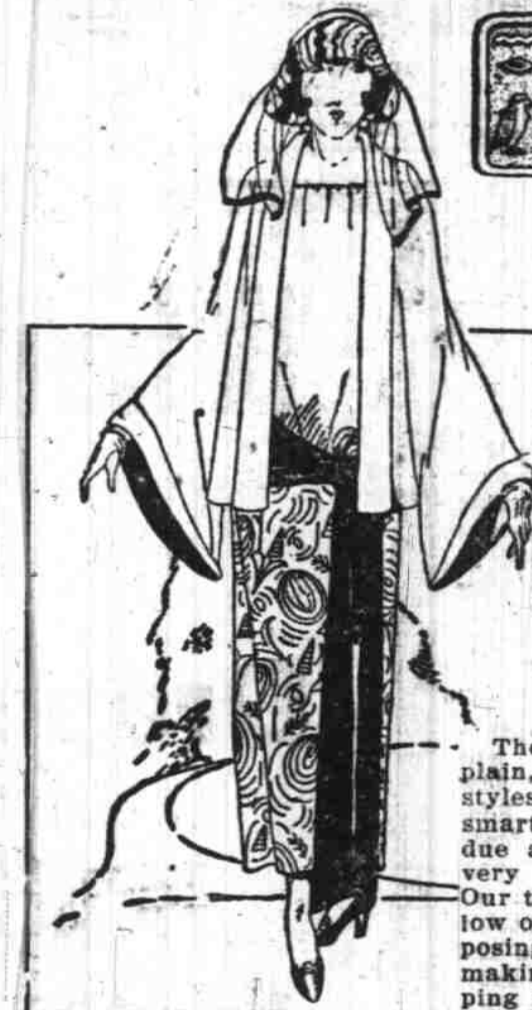
The drama league took no action on Mr. Bennett's charges, and officials expressed the opinion that the matter would be dropped. Aside from the consideration of Mr. Bennett and his charges, today's discussions of play going and the problems and opportunities of community and little theater circles were untroubled.

FASHION DELVES IN THE LAND OF PHAROHS FOR NEWER INSPIRATION

Egyptian Style Influence

TVT-ANKH-AMEN

Is reflected in the Rich Motifs That Distinguish Our Displays



The rapidity of which the popularity of capes has grown is simply marvelous. We offer **WOOL CAPES** At Recognized Savings **\$12.95 to \$29.50** Worth From \$18.00 to \$37.50

These capes can be had in plain, pleated or flounced styles. They are all very smart and withal you are due an explanation for the very low prices attached. Our tremendous volume, our low overhead expense in disposing of them, all join in making this store your shopping place.

3-Piece Silk **SPORT DRESSES** In a Special Offering **\$22.50** Ordinarily Worth \$40.00

We're so enthusiastic about these wonderful values that we want you to view them personally. Made of heavy Harvard Crepe and Egyptian printed crepe of King Tut period designs. In a variety of colors. Each dress in the lot are new and different.



Mannish Styles in Ladies' **TWEED SUITS** **\$10.75** A very unusual selling. These garments were made to sell at \$18.95. See them in the balcony dept.

SALE—PATENT AND SATIN PUMPS \$3-49

This price is deserving of much attention. Important reasons; they are all choice styles and of good quality and a regular \$5.50 value. All sizes. Shoe Dept. on balcony.

New Styles and Attractive Values in a Sale of **Wool Plaited Skirts, \$2.98**



Rushed by Express Came

110 New Hats

Values to \$8.50 and \$10.00 Priced Special at **\$5**

You'll be glad to see the extensive line that is completed by nearly all the wanted shapes.



A large line to select your favorite stripes and colors. Regular values \$5.50 to \$7.50.



\$15.00 Pure Silk **SPORT SWEATERS** **\$10.75**

Let this exceptional value complete your wardrobe **STYLES** are bent on the long tuxedo lines with knit diagonal weave and braided sash cord. You'll vouch for their extreme values once you see them.

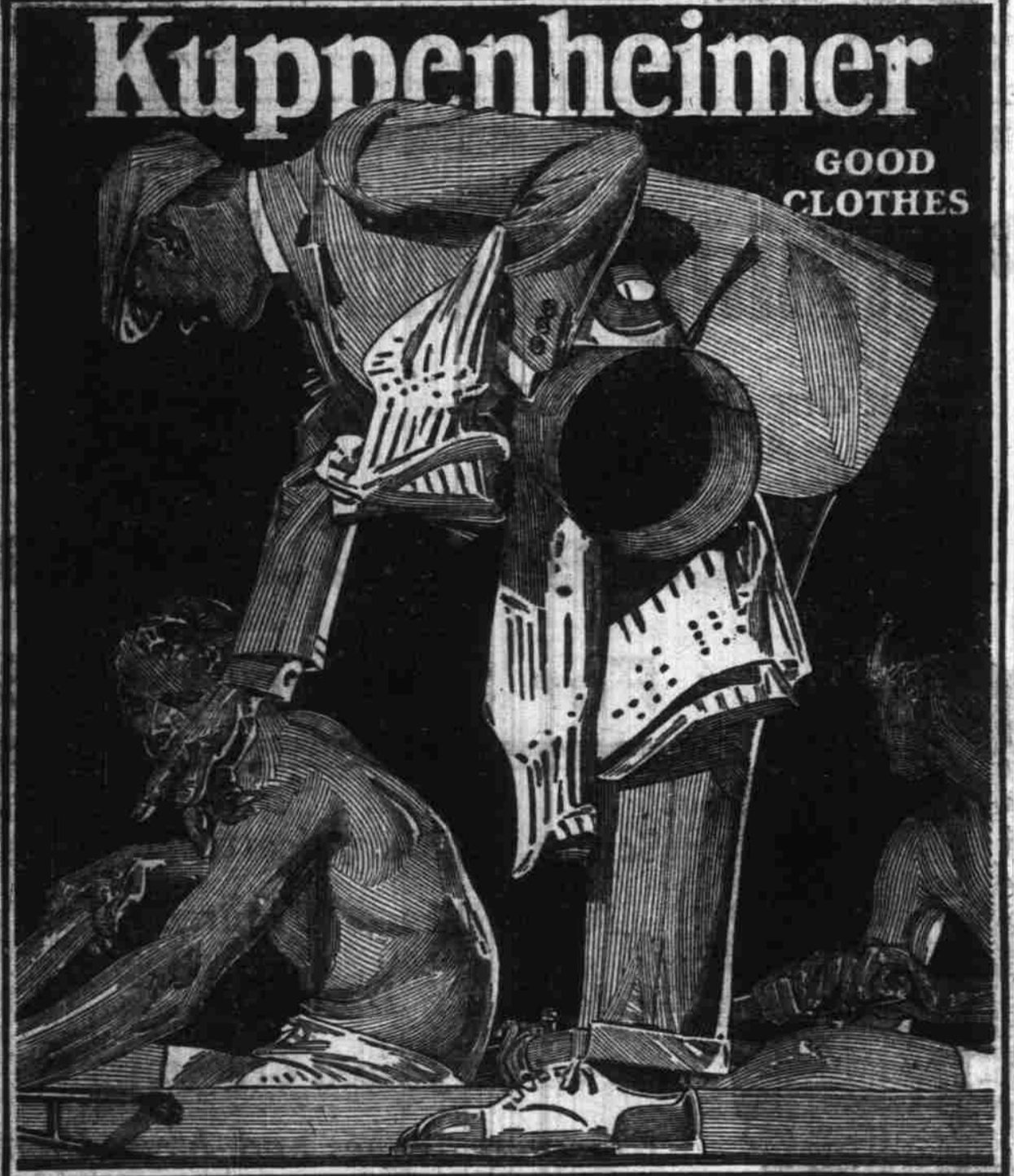
For Monday \$7.50 Values Only 4

Chokers

Go At **\$3.98**

THE PEOPLES CASH STORE

SALEM ORE.



Kuppenheimer

GOOD CLOTHES

Endurance wins out. That's why Kuppenheimer Clothes are made of sturdy, all wool fabrics. Their long service gives them first preference when economy is to be considered.

Their fine tailoring ensures an investment in good appearance. We've an excellent assortment.

\$35 \$40 \$45

Others at \$25 and \$30

SCHEI'S

344 State St.