

NEW GRADER IS TRIED OUT

Producers' Canning & Packing Company Installs Unique New Device

During the year 1922 the Producers' Canning & Packing company of Salem handled a total of 2,702,315 pounds or 1351 tons and 215 pounds of fruit. All this fruit was put through the company's cannery, with the exception of one truck load of strawberries that came in at a time when they had to be sold fresh to avoid spoiling. No spoilage of any consequence was sustained in any variety.

Prunes Biggest Item
Prunes made the largest item in the list, 1,344,058 pounds. Logans were second, with 626,837 pounds; blackberries were third, with 302,139 pounds, and No. 1 Bartlett pears followed with 141,157 pounds. Strawberries that require the most hand help for preparation, came fifth, with 129,755 pounds. The company handled practically every kind of fruit grown in the Willamette valley, including 4932 pounds of gooseberries and 722 pounds of green grape plums.

In his recent annual report to the board of directors and to the general stockholders, Manager Gibson stressed the idea of "quality pack," saying that to get quality at the selling end, the growers must cooperate and deliver quality goods from their vines and trees.

Much Improvement Made
The cannery is being greatly improved for the coming season, though none of the items are of great cost. New working tables for the fruit handling are being built and installed, which set a new mark for efficiency in the canneries of the northwest. A broad 18-inch belt on which all sorted and finished fruit is carried from the handlers to the canning department has been installed, and on either side of the long tables is another smaller belt, eight inches wide, running in the opposite direction, upon which the workers drop all refuse as it falls from their hands, to be carried away without the necessity of having busy men to collect the refuse and delay the whole game. There is no reaching, no strain, no waiting on the part of the women at the tables. It is expected that much greater efficiency and better wages and more handiers to a given floor space will be the result.

Grader is Unique
A new fruit grader, built by C. Pugh is just now being finished for use in the plant this year. It is about 20 feet in length, with the fruit feeding from a hopper at one end, on to a series of endless rubber belts that carry it away for sorting. These belts are heavy rubber garden hose, running over grooved pulleys at either end. The pulleys run free laterally on the driving axle, being held from rotary slipping by a line or key in the shaft. They can be set so as to touch each other, or they could be set wide enough apart to sort water melons. The belts radiate or diverge slightly towards the other end, the second grooved wheels being

also separable to any degree of angle. The fruit travels slowly on the series of rubber belts from the hopper, until the belts have diverged far enough for the smallest grade to drop through.

Walnuts Are Sorted
The first machine built has four graduations or hoppers, about three feet long, and with about one-eighth of an inch spread within the length of each three-foot hopper. The machine has been tested in grading English walnuts, and it grades them almost to microscopic exactness. It is believed to be capable of grading any kind of fruit, even the soft strawberries, with more accuracy and less fruit damage than any other grader on the market.

Fruit Carefully Handled
There is no shaking or rubbing motion anywhere in the handling. The fruit runs smoothly until the belts separate enough for the fruit to drop through—and then it's through. Mr. Pugh has worked out an extraordinarily simple and easily adjustable machine that looks to be the class of all the graders ever built. The Producers will give it a full work out as soon as the fruit season opens.

STRAWBERRIES ARE HURT BY FROSTS

Van Trump Reports After Trip Into Gervais and Other Sections

Frost has proved disastrous to the loganberries in the Gervais district as well as Kelzer bottoms and the Highway section, according to S. H. Van Trump, county fruit inspector, who returned from a trip to that section yesterday. The loganberries are spotted and low on the ground, he states, and from all appearances will not make a half or a third of a crop.

One grower of that section, he states, has 85 acres under cultivation of which about 30 acres appears to be ruined. Loganberries under cultivation on high ground have apparently escaped the frost, he says, but those which have been planted on low ground have suffered.

FEDERAL CLAIM IS OUTLAWED

If Supreme Court Wants to Collect it Must Ask Legislature

An echo of the litigation between the states of Oregon and Washington in the United States supreme court in 1908, in which it was decided that Sand Island, in the mouth of the Columbia river, was in Oregon, was heard in the office of Attorney General Van Winkle yesterday. This was a letter from the clerk of the United States supreme court reminding the attorney general that the state of Oregon has not yet paid its half of the costs of that litigation, amounting to \$540. Attorney General Van Winkle said yesterday that the reason

COMING



ELSIE FERGUSON IN "THE WHEEL OF LIFE"

the state did not pay its part of the costs was that no official notice was ever received from the United States supreme court. This was shown by a perusal of the records yesterday. Van Winkle went on to explain that the claim is now outlawed under the Oregon laws, and can only be collected by the presentation of a claim to the legislature. He forwarded the Washington, D. C., official claim voucher on which the claim may be presented to the next session.

At the 1923 session of the legislature a memorial was addressed to congress requesting that

Sand Island be ceded back to the state of Oregon. In the early 60s the island was ceded by the state to the government on condition that the government establish a military post there. This has never been done, and on that ground it was held by the legislature that the government should re-transfer the island to the state.

Sand Island is a fishing center and fishing grounds in the Columbia in that vicinity are assigned by the government.

Read the Classified Ads.

2-MINUTE TALKS FEATURE SESSION

Unusual Program Yesterday at Regular Dinner of Salem Realtors

Two-minute addresses made by the members themselves were the literary part of the program for the realtors at their dinner Thursday noon. A number of community suggestions were brought up.

Judge John Scott urged that Salem take up the matter of developing some of the cheap electric power from the Cascades, and have cheap power to offer industrial plants.

J. A. Mills told of how the Realtors are getting far away from the old-time sales plan, still followed in an organized way in certain of the states to the south of Oregon, of getting a man into the community, sizing up his roll, and then plucking him of his last copper by selling, if necessary, gold bricks or property that he couldn't use.

Rick Rotmann said that he had been in Salem only a few weeks, but he was here to be a booster. He didn't like the note of pessimism that some affect here; even the governor, he said, seemed to see through darkened glasses. "Smile now, for you'll be a long time dead," he submitted as a living creed.

T. M. Hicks urged that the several civic clubs of Salem get closer together, and presented the Chamber of Commerce as the one big organization that all should support.

W. C. Krueger urged a general cleaning up of the city, making it a personal matter for each owner, to help out the excellent work already being done through the mayor and city council.

A. W. Estes urged more exclusive listings of property as the only possible way for the realtor to give full service to his clients. Carl Becke told of the heavy tourist traffic coming from the

east this year, and urged everybody to prepare to make Salem so attractive, through courtesy, service and cleanliness of the community, that Salem should reap a harvest from these visitors.

C. C. Bohrnstedt urged more expert knowledge of soils, crops and weather conditions, so that the realtor can scientifically advise his clients about buying lands for the kind of crops they want to raise.

Virgil Johnson, deputy state real estate commissioner, urged that all realtors become a part of a big central community organization, like the Chamber of Commerce.

Dr. C. J. Smith of Portland, for more than 30 years a prominent figure in Oregon politics, was a guest of the day, and spoke briefly on the great improvement that is being made in the manner of selling lands and securities.

Dr. M. C. Findley of Salem, another guest, gave a brief greeting.

The Realtors are to give a 6 o'clock dinner and reception to Field Secretary Herrin of the National Realty association, who is to be in Salem Monday, April 23. Following this dinner, Mr. Herrin is to address the business men of Salem at the Chamber of Commerce auditorium.

HAY
PORTLAND, Or., April 20.—Hay: Buying price timothy val-

SATURDAY ONLY

We Pay

22c

FOR EGGS



Alfalfa nominal; eastern Oregon \$26; grain nominal; straw \$10 ton. Selling price \$2 more.

FRUIT

NEW YORK, April 20.—Evaporated apples quiet; prunes steady; apricots easy, peaches unsettled.

Little Junior, aged four, was the son of a radio enthusiast. Together one day they went to visit a neighbor who had a particularly screechy phonograph. The neighbor insisted on playing it. Junior listened to the scratching of the needle for a few minutes and then, turning to his father, gravely inquired: "ith that Pithsburg?"

Free! Free! Free

Today only \$25.00 worth of accessories with each of the following used cars sold.

These Cars Are Guaranteed

1921 Ford Touring; 1920 Ford Touring; 1920 Big Six Studebaker; 1920 Dort Touring; 1921 Special Six Studebaker; 1921 Buick Roadster; 1922 Chevrolet.

Every Day is Bargain Day at the Marion Auto Co.

We Give Terms Trades Considered

See Ackerman

Marion Automobile Company

Phone 362. 235 S. Commercial St.

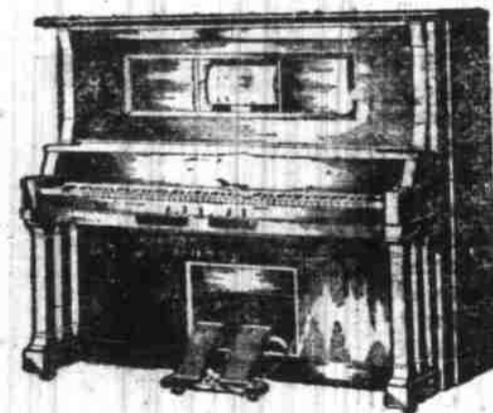
Open All The Time



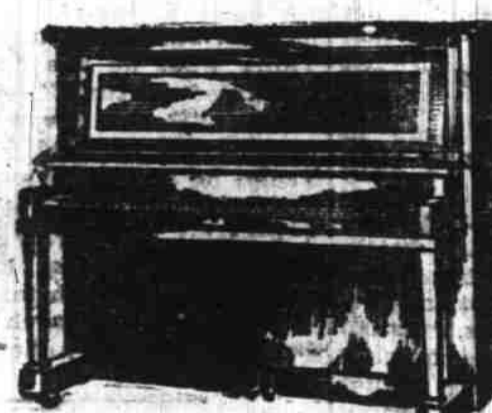
REMODELING SALE

PIANOS AND PHONOGRAPHS REDUCED ONE HALF

On or about May 1 our Music Department will occupy their new quarters—namely the adjoining store to our present location which is now occupied by Fitts Market. In order to reduce our stock to a minimum we are going to cut some of these instruments less than half.



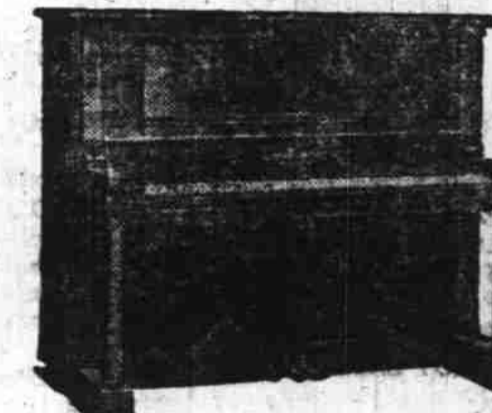
\$750 cut to \$410



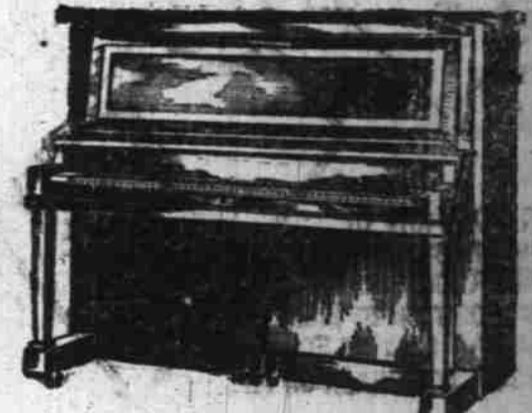
\$575 cut to \$337



\$600 cut to \$341



\$595 cut to \$348



\$435 cut to \$210

"BUY NOW—THIS IS YOUR OPPORTUNITY"



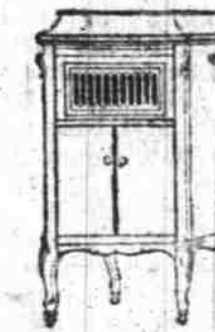
\$275 Columbia \$110



\$125 Victor \$89



\$120 Edison \$79



\$150 Pathe \$62.50



Two Good Practice Pianos \$30 Each



Terms as Low as \$1 per Week

Quality

IN PRINTING will reflect your personality in your Business.

Correct office forms and business stationery increases efficiency, accuracy, economy and pleasure in your Business.

Our commercial department is equipped to give you immediate and satisfactory service at prices that are right.

Suggestions and estimates given at your request.

The Oregon Statesman Commercial Printing Department