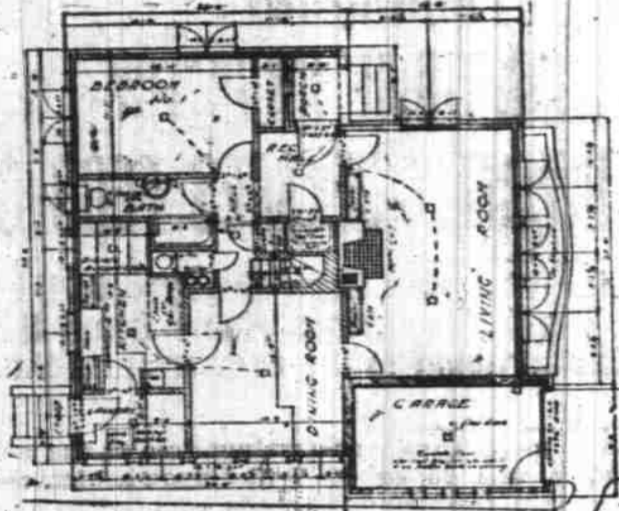


"THE SAN DIEGO" WOULD MAKE A MOST DELIGHTFUL HOME FOR YOU

It Would Guarantee the Safety of Your Investment—A Home With the Stamp of Originality and Having All the Features Going to Make Up Comfort and Convenience

If you are planning to build, "The San Diego" will prove a most delightful home, and will guarantee the safety of your investment. By that is meant the fact that the brick and hollow building the construction used safeguards your home and your family from fires; that the permanence—the time-defying nature of these materials—eliminates deterioration, minimizes your painting and repair bills, and protects you from excessive depreciation in value.

The specifications call for the use of an eight-inch wall, practically made up of two parallel walls tied together at regular intervals; the inner wall to be constructed of 3x6x12 hollow build-



First floor plan of "The San Diego."

ing tile and the outer wall of common brick or rug brick, there being approximately a two-inch space between the two walls. This form of construction, with the unbroken hollow space, insures a damp-proof wall, even against the severest driving rains. For basement walls, the heavier 6x6x12 tile should be used. It will be advisable to build partitions in the basement for store rooms, and in particular to isolate the furnace and fuel supply and thus minimize the danger of fire from those sources. These partitions may be quickly and cheaply constructed by using 3x12x12 partition tile. In addition to the many essential advantages and economies of the enduring construction used, "The San Diego" provides more sentimental values. The exterior

efficient arrangement of stove, sink, working table and built-in cabinets which will minimize the kitchen end of house work. A dining alcove is placed at one end of the kitchen. A laundry is provided for by a large rear entry. For Oregon conditions the laundry should be placed in the basement, and in that case the rear stairway into the basement would be placed in this rear entry. A bedroom with large casement windows on two walls occupies the remaining corner of the first floor, with a bath alongside. The use of outswinging casement windows which permit a complete opening of the window and without the waste of space required by the in-swinging type, is particularly worthy of note. The plans for the second floor provide a bathroom and two good

HOLDING A HUSBAND

Adèle Garrison's New Phase of REVELATIONS OF A WIFE

CHAPTER 286.

THE PLAN LILLIAN SUGGESTED TO DICKY.

"If I might venture to suggest," Lillian said with suspicious meekness in answer to Dicky's demand as to where we were going to live.

"You may speak, Patient Griselda," Dicky replied with an impish grin at her.

"I'm going to," she retorted a little grimly, "and if you have any usurer's blood in you my remarks will doubtless grieve you deeply. You made a pretty good thing out of the sale of the house, didn't you?"

"You've said something," Dicky replied, beaming. "I feel like a profiteer, but it's the first time in a long and misspent life that I ever succeeded in getting the better end of a deal in a business transaction. And when I contemplate the party of the second part, that unspeakable woman who was snooping around here the other day, I'm ready to gloat over every dollar of it. I know she's a skinflint, and that she sheds a tear on every cent as it is transferred. Are those tears sweet to you? Almost as sweet as the dollars."

"What is this?"

"I hope you're not too attached to the dollars," Lillian went on demurely, "for I'd like to separate you from about a thousand of them, for which you will get no return except a little increased comfort and sense of security."

Dicky whistled. "What's this, a rag?" he demanded.

"Nothing of the sort," Lillian replied. "I never was more serious in my life."

"Stop the car, Madge!" he commanded whimsically, but there was a note in his voice which told me that he really meant this unexpected request. "I've got to look into this. A thousand iron men! Police! Am I permitted to inquire what you intend to do with it?"

I drew the car to the side of the road, turned off the engine, and, turning around, watched Lillian's face with interest. I had no more idea than had Dicky of the scheme which was evidently concocting in her brain.

"There really isn't the slightest reason why I should inform you of the money's destination," Lillian drawled. "You've been clever enough to extract it from a poor, helpless, brow-beaten woman that ought to content you. But 'seein' as it's yours, I'll elucidate, but I warn you it'll take some time."

She settled herself more comfortably in her seat, evidently gave the points of her disclosure a quick mental review, and then began to speak in the slow drawl which she affects sometimes:



"Let's proceed from the known to the unknown," she began. "In the first place, we've satisfied ourselves that there's no house to rent, and none that we wish to buy within commuting distance of New York. Even if we older people wished to, live in New York this summer—an unthinkable proposition for Marion and Junior—we couldn't find an apartment. Things are worse there than in the suburbs. And by dint of diligent inquiry I've found that every furniture warehouse is filled to the brim. Also the moving men within a radius of 40 miles won't promise a thing till after May 15."

Arranging to Work.

"Whew!" Dicky's face showed alarm and chagrin. "And we're due to get out of here long before that! If it were anybody but that dame in the office—but it would be useless to expect anything from her. We've simply got to get out. I'll grant you the thousand. I'll give it to you as a commission if you'll get us out of this mess."

"I never rob a cradle," she retorted impudently. "All I ask is that you refrain from any remarks about fool women, unnecessary expense and any of the rest of the list which you wise masculines trot out on any sort of an excuse. For I warn you, you won't approve. My plan is simply to lease for you some comfortable place at the east end of the island for two years, move the furniture out there—in that section the vans are not so busy, and we can get them if we act at once—then sit tight for awhile. We'll then have plenty of time to keep our eyes open for something we really want. I'll get some little furnished place near you—luckily my apartment lease is a long-term one, and I can sublet or leave it empty as I like. It isn't as if any of us had to punch a time-clock or commute to the city every day. We can arrange to do a lot of our work at home, Dicky-bird."

"That doesn't work out so very well," Dicky said doubtfully. "Always unexpected interruptions." I flushed painfully at the injustice of the remark, for I always

am most careful to see that Dicky is absolutely undisturbed at his work.

Lillian came to my rescue, saying the thing which was in my mind, but which I never would have uttered.

"You mean," she drawled coolly, "that you're always interrupting yourself, flying off at a tangent when you should be drawing. You may be able to deceive yourself, Dicky-bird, but don't hand any of that vanilla to me. I've worked by your side too long."

"But apart from that objection what do you think of my scheme? Oh, yes, the thousand dollars is for moving out, deposit on house, and so forth, the little trifles which make moving such a pleasure."

(To be continued.)

CLOVERDALE

Mr. and Mrs. Spicer of Aumsville were guests Sunday at the home of Mr. and Mrs. William Butcher.

While playing, Saturday, at his father's home, Orville Thomas fell on a broken bottle cutting his foot very severely. Dr. Grey of Turner was called and found it necessary to take several stitches in the boy's foot. As an artery was cut the boy lost considerable blood and was in quite a weakened condition, but is doing well.

Mr. and Mrs. Farr were among the Salem shoppers Saturday.

Mr. and Mrs. Levi Fillet of Salem were visiting Sunday evening at the home of M. Fillet.

Mr. and Mrs. Ivan Hadley attended the Sunday School convention in Turner Sunday.

L. Hamilton and family of Ridgefield, Wash., spent Saturday evening with his father, J. M. Hamilton, leaving early Sunday morning for Lebanon.

L. Rambo and family of Oregon City spent Sunday here with Mr. and Mrs. William Butzke.

Watch the ventilation of cold frames and hotbeds as the first warm days approach. You may save a lot of plants or kill them when the weather gets warmer. Sprinkle in the evening before the sash is closed.

Give the asparagus beds a nitrate dressing. About a pound and a half to a square rod. Also salt them if you want to keep down the weeds and make the "grass" tender.

RAILROAD SHARES EXHIBIT STRENGTH

Short Covering and Pool Manipulations Contribute Much to Rise

NEW YORK, April 18.—Prices of stocks continued their rise to higher ground in today's more active market with the railroad shares giving the best exhibition of group strength. While short covering operations and pool manipulations undoubtedly were an important factor in the rise of many shares, the volume of sales and the nature of the buying indicated an increasing public interest in the market.

International buying also has been an important factor in the recent advance. Sales of Anaconda Copper for British account also were reported by local brokers. Announced tax reductions in Great Britain are generally believed responsible for a re-awakening of foreign interest in the local securities markets.

Speculative expectation of favorable March traffic statements accounts in part for the revival of interest in the rail group.

A sharp break in German marks which sustained an overnight drop of 10 points, to .003 cents, was the feature of the foreign exchange market. While official explanations for the decline were not available, local exchange dealers were of the opinion that the German government which had kept the mark "pegged" at .0048 cents for nearly two months had withdrawn its support or found it ineffective under the tremendous flood of new paper money. French francs rallied 8 points to 664 cents but the other European rates showed little change.

Call money opened at 5 per cent, but eased off to 4 1/2 per cent before the close. Business in the time money market was confined almost entirely to renewals which were arranged at 5 1/4 to 5 1/2 per cent, depending upon maturity. The commercial paper market was less active with no change.

Sow turnip seeds after a rain, and cover very lightly. Tread them in.

Astoria Streets to be Built on Solid Fill Plan

ASTORIA, Or., April 18.—Reconstruction of Astoria's streets has been undertaken on the solid fill plan, instead of the viaduct plan which the city commission first had approved. The change in the method of rebuilding the streets, which were wrecked in the fire of December 8, 1922, were made when property owners objected to the plan of leaving the space beneath the pavements unfilled.

According to the plan finally adopted concrete retaining walls are to be erected at the sidewalk lines and between the walls there will be placed solid fills of earth.

These fills will repair the wooden piling on which the streets were originally built. The wooden piling, with spaces beneath, was responsible for the rapid spread of the fire, which wiped out the business section. The piling had been constructed when the city was built out over the mudflats of the Columbia river in the early days.

Will Ask Treasurer to Open City Stork Account

CALGARY, Alberta, April 17.—City Treasurer Mercer may be asked to open a "stork account" if a suggestion made by the health committee of the local council of women is carried into effect. A deputation from the local council waited on Mayor G. H. Webster and Commissioner Graves recently to suggest that such an account be opened by the city.

The plan is intended to make it possible for expectant mothers to lay aside a sufficient sum for the day of need by making payments in advance. The trouble with the usual installment plan, the women explained, is that it is usually paid after the event. But after the birth of a child there are a number of expenses added to the family. By advance installment plan the best medical care and other services can be assured.

FRUIT

NEW YORK, April 18.—Evaluations steady; apricots unsettled; orated apples dull and easy; peaches easy.

Don't put any fresh manure on the soil where you are to grow egg plants.

AN ATTRACTIVE INVESTMENT

The
7% Prior Preference Stock
of the
PORTLAND RAILWAY, LIGHT AND POWER COMPANY

A Condensed Statement of the Principal Features of this Security

This issue of stock takes precedence over all other stock of the Company as to assets and dividends, and no stock having priority over this issue can be created without the approval of the holders of a majority of this issue.

This issue is being offered to the employees and the public served by this Company as an opportunity to participate in the actual ownership of the foremost public utility in this community.

The stock is to pay a dividend of 7% per annum payable quarterly on the first days of January, April, July and October of each year. This dividend will be provided before dividends are declared on any of the \$22,250,000 of other stock outstanding.

The Company has had, at all times, surplus earning materially in excess of the 7% dividend required by this issue.

The stock is offered to the public at a price of \$98 per share, plus accrued dividends, par value being \$100.00 per share. The dividend of \$7.00 per share will therefore afford a return of approximately 7.14% on the money invested, an exceptionally attractive rate of interest for an investment of this character.

All funds derived from the sale of this stock are to be used entirely for improvements in and additions to the properties of this Company, thus directly adding to the assets behind the Company's securities.

The stock may be purchased at \$98.00 per share on the installment plan if desired, and 7% interest will be paid on all partial payments from the time they are made. An initial payment of \$10.00 per share secures the stock for purchase in this manner, the balance payable at the rate of \$10.00 per share per month, with the privilege of paying in full at any time. Stock Certificates will be delivered upon payment in full.

Dividends on this stock are cumulative, thus affording additional assurance of full payment of dividends. Dividends on this stock are exempt from normal federal income tax.

Holders of this stock who, at any time, desire to dispose of it, may arrange to offer it for sale through the Securities Department of this Company.

Liberty Bonds will be accepted at market value to apply on payments for this stock.

SHERMAN CLAY PIANOS

Largest Retail Piano Concern in the World

For Your Selection We Offer You the Standard of Values

Steinway — Weber — A. B. Chase — Steck
Emerson — Kurtzman — Krakauer
Davenport & Treacy, etc.

A Piano for Every Purse

Your old piano taken in exchange
Victor Victrolas, Sheet Music, etc

MOORE'S MUSIC HOUSE

Sales Representatives

415 Court St.

Phone 983

Side view of "The San Diego," a hollow tile and brick home.

design is decidedly beautiful and individual in character. The interior is planned to provide a full measure of home comforts and conveniences. It has four rooms on the first floor and two on the second, with an attached garage.

Stamp of Originality
The triple arched windows on the front and in either gable, the long slope of the roof down over the attached garage, and the large flower bed within the retaining wall are a few of the special features which give this house the stamp of originality. But still, they merely supplement the distinctiveness of the entire design. Taken all in all it is a home of which anyone can be justly proud.

From the picturesque front entrance one enters a reception hall with a coat closet. From this

sized bedrooms, each with a great arched window, at the end and with a second window in the dormer, so that good ventilation is assured. Large storage and closet space is provided with each of these bedrooms under the roof.

The plans and specifications for "The San Diego" are in a blueprint that comes with the February, 1923, issue of the Permanent Builder. They may be secured by sending 35 cents to The Permanent Builder, 133 West Washington street, Chicago, Ill., and ask for a copy of their February, 1923, number. Or any one interested may look over this number at the office of the Salem Brick & Tile company. The officers of this company will be happy at any time to go over these plans with you and explain the values of this type of construction.

fully to be at their best as they are a cool weather crop and demand cool roots. The maintenance of a dust mulch in dry spells will do wonders towards keeping them going. They need liberal soakings if an unseasonable dry, hot spell intervenes in June as sometimes happens.

Although the dwarf peas will grow well without support they will do better, even the most dwarfed, if given a width of narrow chicken wire to start them into upright growth. The taller of the dwarf section, those that grow two feet or more high, need this support and some of the finest of the dwarf section attain this height.

Be sure to give seedling plants growing indoors all the light possible. They will reach up for it, if they must, and thus become weak and spindling.

Peas must be cultivated faith-