

TO OPEN VAST ALASKA REGION

Empire of 300,000 Square Miles to Be Provided With Transportation

ANCHORAGE, Alaska, April 11.—Providing an empire of 300,000 square miles with a complete transportation system, which differs from anything in America in that it embraces conditions and problems not encountered at any other point on the western hemisphere, is the work partly accomplished by the joint activities of the Alaskan Engineering commission and the Alaska Road commission.

To grasp the magnitude of the work performed, and being performed, in Alaska one must revert to a period of but two years ago when to penetrate the great hinterland of Alaska entailed months of travel and a thousand hazards over deep snows and in low temperatures. Travel was conducted in winter when rivers were frozen and the great tundras and swamps were coated with ice. To undertake such a trip in summer was fraught with greater difficulties.

Last Trench Remains
The army that has been showing the lines of transportation and modern conditions into the heart of Alaska has taken all but the last trench and in the consolidation of the trenches already taken have gained command of one of the most hazardous and complex transportation problems ever confronting a nation, according to leading engineers. The last trench is a matter of some 40 miles of narrow gauge railroad to be standardized when every obstacle to reaching the most remote regions of the territory will have been removed and supplanted by a transportation system, which the engineers say will be second to none.

The Alaska railroad is the key to the entire situation. This key has unlocked the door to river transportation on the Tanana and Yukon rivers and their tributaries. It is now possible to travel an all-year open seaport at Seward to Fairbanks by rail and at the Tanana river, lying in the great hard wheat belt of Alaska,

steamers will be ready in summer to take passengers and freight via this stream to the Yukon, up the Yukon to Dawson, and down the Yukon to Fort St. Michaels.

Mining Industry Aided
Aside from its other functions the government transportation system will enable gold hunters and placer operators to penetrate farther into the arctic, something entailing several years' time and untold hazards but two years ago. What was isolation is now accessible to almost anyone who cares to venture into hitherto mysterious and unexplored regions.

In speaking of the activities of the Alaskan Road commission, of which he is vice chairman, Colonel John C. Gotwals says:

"The solution of means of overland transportation is at last receiving the attention that it deserves in Alaska. The construction of the railroad, magnificent piece of work that it is, is a token of the aims of the government in this respect. This structure adds a gigantic link to the primary transportation line upon which our present economic system rests and upon which the future commercial activity, greater than anything seen in the past, will arise. But to bring on this greater day, still another link must be added tying our producing centers together and with the great outside; that is, the completion of the necessary trails and roads to reach the railroad and the interior river system served by boats operating from the railroad.

NEW CORPORATIONS

The Portland Wool Warehouse company, capitalized at \$300,000 filed articles of incorporation here yesterday. The incorporators are J. W. Creath, J. V. Burke and Oscar Furuset.

Other articles filed were: American Educational club, Portland; incorporators, Thomas Blagieh, Steven D. Adrian, Stefo Evanoff; capitalization \$1000.

City Messenger & Delivery company, Portland; incorporators, Karl Herbring, Neil Halarkey, O. Ohle; capitalization \$5000.

David Ocean Log Rafting & Towing company, Portland; incorporators, G. G. Davis, F. A. Douy, C. N. Wonacott; capitalization \$50,000.

Great Western Coffee company Portland; incorporators, R. M. Caldwell, Vibert Hunsaker, Gertrude Caldwell; capitalization \$50,000.

SOCIETY

By MARGUERITE GLEESON

THE first formal dance of the season was given last night at the Illahee Country club. The affair was preceded by a number of smaller dinner parties and a few informal supper parties were delightful affairs following the dance.

Mr. and Mrs. John J. Roberts were hosts of a dinner party preceding the dance at which covers were laid for 28 guests.

Mr. and Mrs. A. N. Moores have as their house guest their daughter, Mrs. Robert Kinney of Astoria.

Mrs. W. E. Johnson was hostess yesterday at a "500" party in honor of her house guests, Mrs. A. L. Johnson and Miss Cecil M. Davis of Santa Cruz, Ar. Mrs. Frank Schaffer won high score, and the consolation prize went to Mrs. H. H. Corey.

The rooms of the Johnson home were bright with potted plants and spring blooms in yellow and white. Four tables were in play during the afternoon.

The guests included, besides the guests of honor: Mrs. Rome Hunter, Mrs. H. H. Corey, Mrs. James Godfrey, Mrs. Frank Schaffer, Mrs. W. F. Buckner, Mrs. O. F. Hoff, Mrs. Ida A. Book, Mrs. W. W. Moore, Mrs. Miller Berier, Mrs. Walter Smith, Mrs. Carrie Fowle, Mrs. Margaret Montgomery, Mrs. Alice Coolidge, Mrs. D. B. Jarnine, Mrs. J. A. Bernardi, Mrs. Grace Johns, Mrs. W. A. Johnson and Miss Lella Johnson.

The OAC club will be entertained next week at the home of Mr. and Mrs. Lewis D. Griffith. The regular meeting of the club is tonight, but it has been postponed until next Thursday night.

Mrs. A. N. Bush will be hostess for the Thursday afternoon club at her home this evening. Joint hostesses for the afternoon are Mrs. F. A. Elliott, Mrs. S. C. Dyer and Mrs. Charles Park.

Mrs. E. Van Slyke is hostess today for members of the Golden Hour club.

The women of the Central Congregational church will give a

CLUB CALENDAR
Today
WRC Aid society, all day at armory.
Thursday Afternoon club, with Mrs. A. N. Bush.
YMCA auxiliary at YMCA.
Friday
Three Link Club.
Saturday
Salem Woman's club.
Ladies of G.A.R.

supper at the church early next week.

The first two lectures on the Tombs of Luthor were given yesterday by Mrs. Alice H. Dodd, under the sponsorship of the Salem Women's club at the Liberty theater. Mrs. Dodd was handicapped yesterday by the fact that the electric current went off at the beginning of her lecture, and she was obliged to talk for a while without illustrations around which her talk was built.

Those hearing her, however, had the opportunity of hearing many interesting things which she would have been obliged to omit had the lights enabled her to continue her lecture.

A double quartet from the Salem Women's club chorus sang "Where My Caravan Has Rested," and responded with an encore, "The Night Has a Thousand Eyes."

The members of the quartet, which is exceptionally well balanced and sings well together, affair.

AUTOS CLASH HITTING 90 MILES AN HOUR IN RACE.



Here is one of the most remarkable photos ever taken of an automobile accident during an exciting race on the Ormond-Daytona, Fla. Beach track. The cars were traveling ninety miles an hour when the leader blew a tire (shown coming off) and skidded. His nearest competitor, right behind, is seen making heroic efforts to avoid the crash. He suffered three broken ribs, while the leader got only a bad shakier up.

are Mrs. L. M. Gilbertson, Mrs. Merle Rosencrans, Mrs. John J. Roberts and Mrs. Ada Miller Harris. Miss Dorothy Pearce played the accompaniments.

Mabel Marcus Sings at Glee Club Entertainment

OREGON AGRICULTURAL COLLEGE, Corvallis, April 11.—Mabel E. Marcus of Salem, sophomore in physical education, gave several songs at an entertainment given at Shedd, Or., by the Glee club and Madrigal club of the college. Combining the men's and women's voices in the concert gave it a greater variety than it would have otherwise had, according to W. F. Gaskins, professor of music, who directed the affair.

TOM GIBBONS TO TRAIN IN HAVRE

Chief of Police and Fighter's Manager Negotiating for Quarters

HAVRE, Mont., April 10.—If the proposed Dempsey-Gibbons heavyweight champion bout is fought in Shelby, Mont., on July 4, Tommy Gibbons, challenger for the title, will train in Havre, according to James Moran, chief of police here.

Chief Moran and Mike Collins of St. Paul, Gibbons' manager, held a conference here recently

on the prospective bout and training quarters. Only a few years ago Chief Moran was a lightweight boxer with headquarters in St. Paul. Two years ago when a newly elected mayor decided on a reform administration, he found the proprietor of a ranch near Havre was an ex-pugilist. This rancher was Jimmy Moran and he accepted the post of police chief with the stipulation that he was to be given unquestioned authority over the police force.

Recently Moran turned up with the knuckles of one hand bandaged. His only explanation was that "two fellows in the railroad yard thought I couldn't arrest them." The two fellows, it seems were mistaken.

So when Mike Collins went through Havre to see if the \$250,000 offered for a bout was real

money or merely conversation, he was greeted by his pal, Moran, and accepted Moran's proposal that Havre be made Gibbons' training quarters if the fight is held here.

California Courts Will Eliminate Mr. Fixit's Job

LOS ANGELES, Cal., April 10.—"Fixing it with the judge" will soon be a forgotten art among local traffic law violators if a campaign inaugurated by Chief of Police Louis D. Oaks meets with success here. Chief Oaks has issued an ultimatum against attempts at intervention in speeding cases, accompanied by a warning that any member of the police department caught acting as a "friend on the force" in behalf of erring automobilists will be suspended.

Ford

ANNOUNCEMENT

of Interest to

MILLIONS of FAMILIES

"I will build a car for the multitude"
Said Henry Ford in 1903—Read how the fulfillment of that prophecy is now made possible through the

Ford Weekly Purchase Plan

For many years it has been Henry Ford's personal ambition to make the Ford the universal family car—to put it within the reach of the millions of people who have never been privileged to enjoy the benefits of motor car ownership.

During the past fifteen years over 7,500,000 Ford cars have been placed in the hands of retail customers—more than a million and a half of them within the past twelve months—and yet there are still millions of families who are hopefully looking forward to the day when they can own a Ford.

And now the way is open.
Under the terms of this plan you select your Ford Car, set aside a small amount each week and you will be surprised how soon you will own it. In the meantime your money will be safely deposited to your credit in one of the local banks where it will draw interest.

Think it over. Five dollars will start an account. The whole family can participate in it—father, mother, brothers and sisters each doing a little.

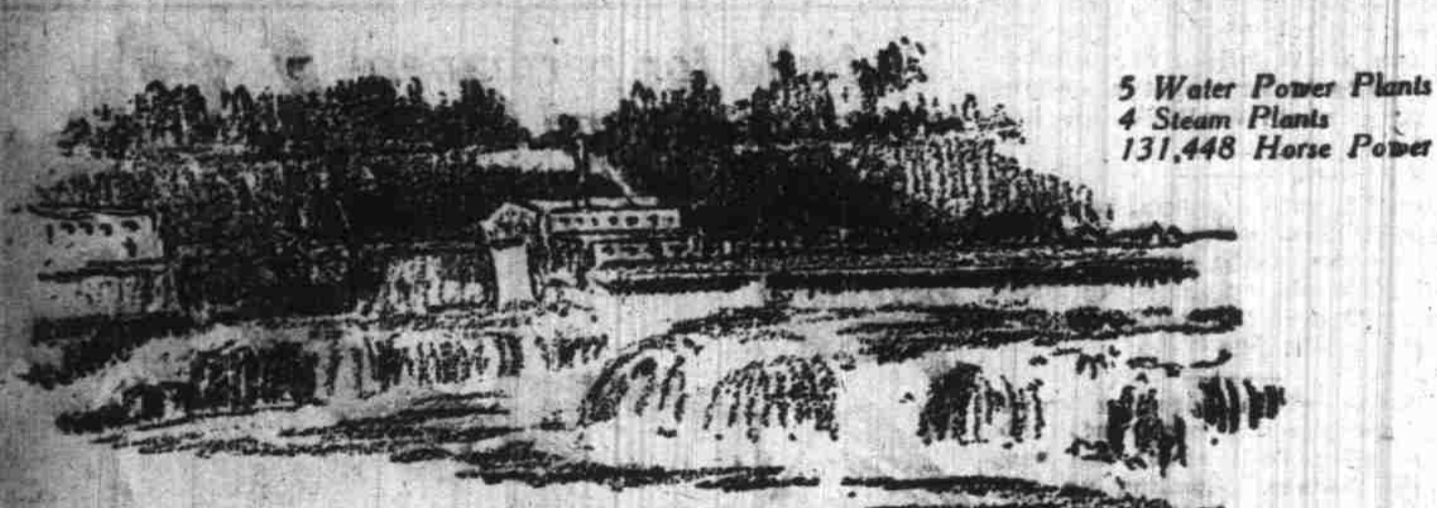
Why not start today. Stop in and talk it over with your local Ford dealer. He will be glad to fully explain the details of the plan and help you get started toward the ownership of a Ford car.

Ford Motor Company
Detroit, Mich.

Valley Motor Company

Salem, Or.
Phone 1995

260 N. High



5 Water Power Plants
4 Steam Plants
131,448 Horse Power

Nature Helps Build Up Your Earning Power

WHEN YOU PUT YOUR SAVINGS INTO the securities of a great and growing public utility like this Company, which supplies electric light and power service to nearly 40 communities, even Nature contributes toward increasing your dividend earning power.

This Company now has in operation, and devoted to the service of over 330,000 people, five large water power plants and four modern steam plants, with a capacity of 131,448 horsepower.

Yet, the demands for our light and power service are growing so rapidly that we are now engaged in the construction of one single hydro-electric power project which will have a capacity of about 105,000 horsepower—much more than all our present five water power plants, and when completed, this mighty undertaking will have cost approximately \$12,000,000.

When you subscribe for a few shares of our 7% Prior Preference Stock, which is now offered you at \$98 a share, par value \$100, you may rest assured that your money is safe and that so long as people need electric service, your investment will draw dividends regularly every three months.

You may buy these shares for cash, or on easy terms—\$10 down, per share, and \$10 a month, till paid for, and your payments draw interest at 7% till the shares are yours.

Why not investigate this splendid opportunity today?

INVESTMENT DEPARTMENT
Portland Railway, Light and Power Company

