

AUTOMOBILES, TRUCKS AND TRACTORS

MOTORCYCLES — BICYCLES — ACCESSORIES

ALL-STEEL BODY OF OVERLAND

Construction That Will Live
as Long as the
Motor

The public has much interest in the unusual body construction of the Overland touring cars which have created so favorable and popular impression at the recent automobile show. The Overland's body is all steel.

Giant machines blank, draw and stamp the pieces of steel, which make up the body. This all-steel body eliminates not only the possibility of the car bursting or bulging at the joints but it does away with body squeaks or rattles and provides a big factor of safety.

The body carries out the full streamline effect that is so marked in the completed car. Blasting windshield, full crowned fenders,

Good piano \$80. Only \$5 down, \$5 a month. We are closing out fifty pianos Monday and Tuesday from \$80 up. Many good buys around \$100 on terms of \$5 down, \$1.50 a week. See big sale ad, page 5. Geo. C. Will, 432 State St.—Adv.



Velocipedes for the little tots—Dayton and Columbia bikes for the older person.

Lloyd E. Ramsden
387 Court St.

TIRES and TUBES

Factory First
Standard
Guarantee

Equal to any tires that are sold as Fabrics 6000-mile guaranteed or Cords 10,000-mile guaranteed.

Size	Cords	Fabrics	Tubes
28x3	\$ 7.95	\$1.50
30x3	6.75	1.25
32x3 1/2	9.95	1.60
32x4	14.25	2.15
32x4 1/2	17.95	2.80
32x4 3/4	18.75	2.40
32x4 1/2	20.50	3.20
32x4 3/4	25.50	3.95
32x4 1/2	30.90	4.00
32x4 3/4	31.90	4.25
32x5	35.00	4.50
32x5 1/2	37.50	4.90
32x5 3/4	39.00	4.75
32x6	39.70	5.00
32x6 1/2	39.95	5.70

Garden Hose
25 feet..... \$2.50
50 feet..... \$4.70
Howitz Make.
Get the benefit of our large buying capacity.

**MALCOM
TIRE CO.**
Commercial and Court Sts.
Salem, Ore.
Established 1917

ders, and the highly sleeted, hard-baked permanent enamel finish are in keeping with the general high quality of the car. The interior construction provides everything of utility provided in the larger cars of much higher price. The wide deep seats of Overland are cushioned over divan type springs such as are used in the finest upholstery. The seats are of sufficient width to accommodate five passengers comfortably. All cushions, including the back and sides are removable, thus giving a large carrying capacity in the rear section of the car.

The fenders are of heavy sheet steel. The running boards are covered with linoleum, aluminum bound. The fittings are nickel and polished aluminum.

The all-steel body means to the buyer a car that will live as long as its motor, a body that will not develop squeaks and rattles or more serious defects with age and use.

Uncle Joe Cannon is undertaking a test of the question how long a man is thought about and discussed after he has retired from the limelight. And it is the acid test of greatness.

At Liberty— Competent Nurse

I would like to get a position for my faithful nurse. I have decided to remain home and attend to my baby myself. For reasons apply: "What's Wrong With the Women," Liberty Theatre.

RIMS

and Rim Parts for all Cars
Free Expert Advice
IRA JORGENSEN
180 South High Street

CAREFUL TESTS MADE BY DRIVERS

Adjustments Made in Motor
Before Machine Is Placed
on Sale

A return to first principles and old-fashioned methods is found in the Paige plant in Detroit here every Paige automobile is now being road tested. When the chassis has been finished, inspected and tested in the factory in the usual manner a test body is mounted upon it and it is turned over to the road tester. The road tester is instructed to consider himself the personal representative of the man or woman who will eventually own that car.

FORDS USED CARS

OUR STOCK IS COMPLETE

Touring, Coupes, Roadsters,
Sedans, Trucks, Chassis

From \$85.00 up

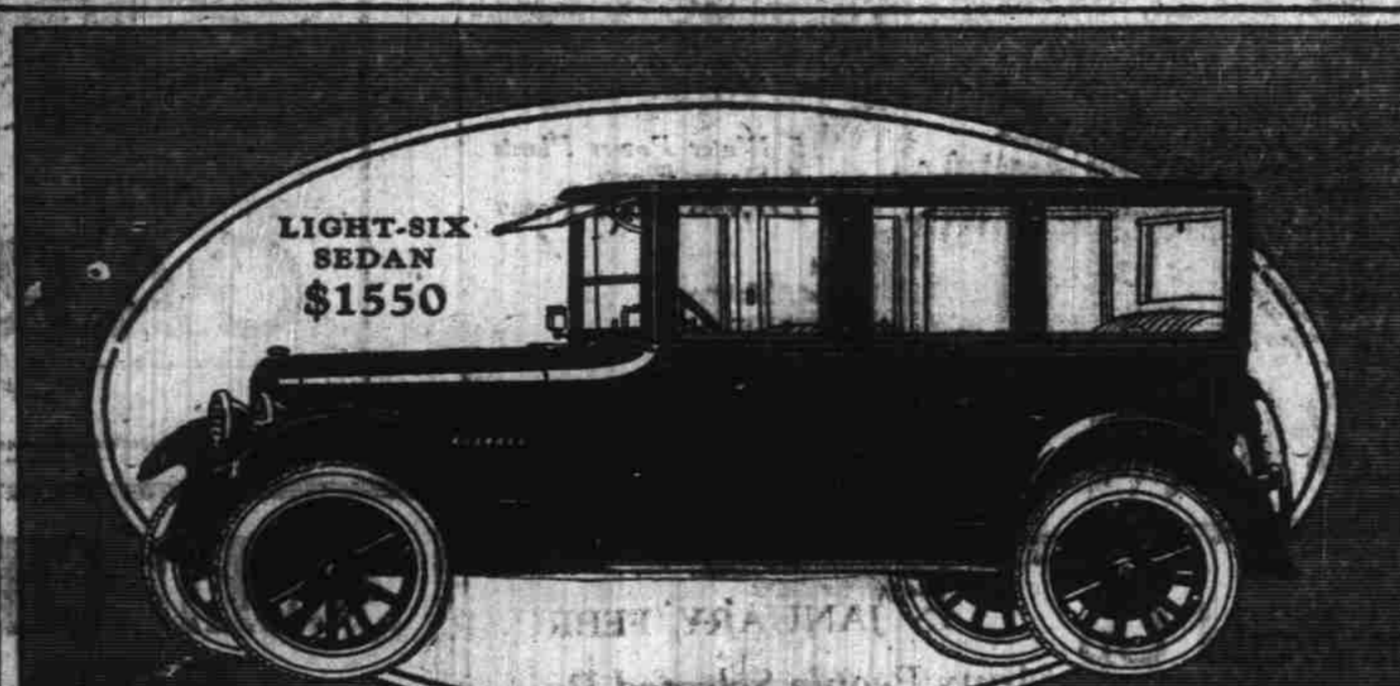
Also a Few Others

Overland - Maxwell - Oakland

TERMS:—Small deposit will hold any car. Our easy payment plan will let you ride while you pay.

VALLEY MOTOR CO.

Yours for Genuine Ford Parts and Service
260 North High Phone 1995



LIGHT-SIX
SEDAN
\$1550

If you pay a thousand dollars for a car and have to buy a new one each year, it is at least twice as expensive as a fifteen hundred and fifty dollar car that looks like new at the end of three years.

We believe a Studebaker Sedan is good for five to ten years of useful, satisfactory life. We are not positive as to the real life because none has yet worn out.

If, when you trade in your car, you learn that you can get only three or four hundred dollars for it because there is no second-hand market for that make of car, then you must add this extra

depreciation to arrive at the real cost of the car.

The trade-in price of Studebaker cars shows a very small depreciation, in many sections the smallest of all makes of motor cars. And there is always a ready market for used cars of Studebaker manufacture.

Motor car values find their proper levels in used car salesrooms. Visit one and compare Studebaker second-hand prices with others. The result will be illuminating. The built-in value proves itself each thousand miles of use.

MODELS AND PRICES—(F. O. B. Factory)		
LIGHT-SIX 5-Pass. 117 W. B. 40 H. P.	SPECIAL-SIX 5-Pass. 117 W. B. 30 H. P.	BIG-SIX 7-Pass. 126 W. B. 30 H. P.
Touring.....\$ 975	Touring.....\$1275	Touring.....\$1750
Roadster (2-Pass.).....975	Roadster (2-Pass.).....1275	Roadster (2-Pass.).....1750
Coupe (4-Pass.).....1275	Coupe (4-Pass.).....1575	Coupe (4-Pass.).....2100
Sedan.....1550	Sedan.....2050	Sedan.....2750

Terms to Meet Your Convenience
MARION AUTOMOBILE CO.
285 S. Commercial St. SALEM Phone 382
(Open Day and Night)



THIS IS A STUDEBAKER YEAR

CAR SALES ARE ON INCREASE

Paige and Jewett Cars Selling
Better Than Ever
Before Say Dealers

Sales of Paige and Jewett cars during the first three months of this year were 310 per cent greater than in the same three months of 1922 according to reports received from the Paige factory by

but they also start the breaking in process for the owner. "We have learned that no artificial test can exactly duplicate the conditions of actual driving," says W. A. Wheeler, vice president of the manufacturing division of the Paige company. "Our ideal is that the Paige 6-70 shall be second to none among the world's finest automobiles. Our long and careful road test is but one of the many old-fashioned painstaking processes that we now use to insure real and lasting quality and a perfection that means to the owner dependable performance and freedom from annoyance. These things take time and cost money but we believe that they are appreciated by the veteran motorist who wants a really fine motor car."

Vick Brothers, the local Paige-Jewett distributors.

"Leading lines in the industry are showing big increases in sales over previous years, but we believe that ours is above the average," says H. Krohn, vice president of the sales division at the Paige plant. "That three times as many motorists have selected Paige and Jewett cars this year as during the same period a year ago is, we take it, convincing proof of the popularity of our product."

"When we placed the Jewett on the market early in 1922 we felt that it offered an unusual combination of sturdy strength, comfort and fine six-cylinder performance at a low price. We designed and built the car to dominate the \$1,000 class. Now after a year in which more than 20,000 of these cars have passed into the hands of owners it has proved itself to the public in the test of actual use."

"The new Paige models which we placed before the public with the opening of the year are our ideal of fine cars developed through years of fine car manufacture. We set for ourselves entirely new standards of quality and completeness. The public has recognized this quality as their ideal. The demand for the new Paige in the above the \$2,000 class has been in proportion to the demand for the Jewett in

the \$1,000 field. They have combined to treble our business." Absolute truths are never superseded.

TIRES

GOOD TIRES AND GOOD PRICES

They are Fisk Premier Cords

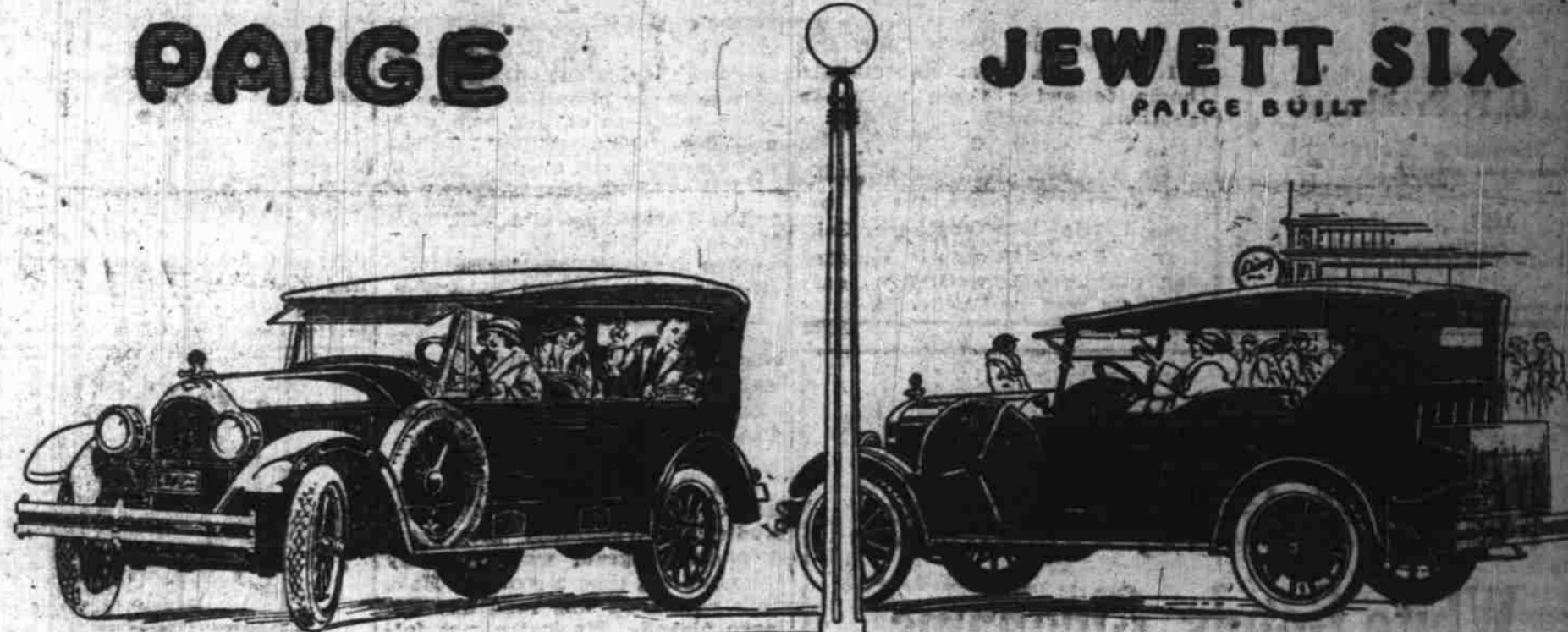
30x3 1/2	Oversize Fisk Premier Cord	\$12.65
31x4	—Use 30x3 1/2	
32x4	Oversize Fisk Premier Cord	24.30
33x4	Oversize Fisk Premier Cord	25.00
32x4 1/2	Oversize Fisk Premier Cord	31.45
33x4 1/2	Oversize Fisk Premier Cord	32.10
34x4 1/2	Oversize Fisk Premier Cord	32.90
33x5	Oversize Fisk Premier Cord	39.00
35x5	Oversize Fisk Premier Cord	41.15

Yours While They Last

"JIM" SMITH & WATKINS "BILL"

Our Service Car is for Your Use

125-147 North High Street Phone 44



310% Increase In Sales!

IN JANUARY, FEBRUARY AND MARCH, 1923

Three Times as Many People Selected Paiges and Jewetts as in the Same Months of 1922

AND we could sell twice as many if we could make them. For Paige and Jewett sales are governed only by what we can produce. As far ahead as we can see Paige and Jewett will go through 1923 with an increase in business never before witnessed in the industry.

It took the public nearly a year to find out how good the Jewett is. This Paige-designed, Paige-built, moderate size six is the huskiest built car of its size. It has the biggest motor of any car its size—50 horsepower. And so in spite of its sturdy construction it is the most active car you ever tried out in a speed brush—5 to 25 miles an hour in 7 seconds. Try it.

Paige-Timken axles front and rear. Ball-bearing steering spindles. Springs 80% of the wheel base. Paige-type clutch and transmission prevent motor stalling; gear changing is so easy you can drop from high to second at 30 miles an hour. If you want the best car \$1275 ever bought now is the time to buy.

Phaeton, 7 pass.....\$2795	Broughan, 5 pass.....\$3525
Phaeton, 4 pass.....\$2795	Tour Sedan, 5 pass.....\$3640
Roadster, 3 pass.....\$3050	Sedan, 7 pass.....\$3640
	Limousine, 7 pass.....\$3850

Our Ideal Paige—long the Most Beautiful Car in America—is now more beautiful and enduring than ever. Richness you can see and feel—not a piece of imitation leather in the entire car. The body made proof against squeaks and rattles by double strips of patent leather which prevent metal touching metal or wood.

The Paige 6-70 motor with silent timing chain and high-pressure oiling system possesses silence which will endure—power that will not diminish. With rear springs more than five feet long, Paige-Timken axles front and rear, ball-bearing steering spindles, and new clutch and transmission—our Ideal Paige rides and drives as no car ever could before.

Paige is equipped with two extra cord tires, two bumpers, shock absorbers, gasoline gauge on dash, motometer, automatic windshield wiper—everything you could think of. By far the finest car Paige ever produced, and fully equipped it costs only \$2795.

Tour, 5 pass.....\$1275	Sedan, 5 pass.....\$1775
Roadster, 3 pass.....\$1275	Special Tour.....\$1455
Coupe, 4 pass.....\$1740	Special Coupe.....\$1930
	Special Sedan.....\$1980

Prices at Salem

VICK BROTHERS
QUALITY CARS
High Street at Trade