

# COOLIDGE & McCLAIN BANK

Established 1880

**GEO. W. STEELHAMMER**  
Expert Prescriptionists  
The Rexall Store  
**Victor Phonographs**  
Eastman Kodaks  
Main St., Silverton, Or.

**BLAIR'S Delicatessen and Grocery**  
Everything to Eat and Drink  
F. R. Blair

Located in our new building at the corner of First and Main Streets, we are ready to serve you "with a smile."  
Our line of overstuffed furniture, davenport tables, end tables and period dining-room sets is complete.  
Our liberal credit terms make it easy for you to have your house furnished in the style you like.  
**LADIES:**—Comfortable and elaborate rest room at your disposal.  
**BRUNSWICK** talking machines, records and supplies.  
**USED DEPARTMENT**—Here you will find many wonderful bargains. Trade in your old furniture for new.  
"Silverton's Largest Furniture Store"  
**H. L. STIFF FURNITURE CO., INC.**  
SILVERTON, OREGON

**Try Olsen Pharmacy First!**  
At the Corner by the Bridge  
Silverton, Oregon

**The Needlecraft and Baby Shop**  
Carries All the New Ideas You Need  
**Lyon Rug Yarns and D. M. C.**  
Hand Painted China

**THE WOMEN'S SPECIALTY SHOP**  
216 Main Street  
Exclusive Styles in Women's Wear  
Suits, Coats, Dresses, Skirts, Blouses, Corsets, Petticoats, Hosiery  
**CATHERN BRUCE**  
106 First Street  
Successor to Mrs. M. P. Hoge  
Exclusive Spring Millinery Now on Display

## SILVERTON-SECOND CITY OF MARION COUNTY IN SIZE

Manufactures More Lumber Than Any Other City in Greater Salem District and Is Exceeded by Very Few Cities on Pacific Coast—Two Big Mills, Silver Falls Timber Co. and Silverton Lumber Co. Predominate—Modern in Civic Methods and Equipment—School System of Healthful, Sanitary Buildings and Standard Course of Study Is Among the Best—Women's Organizations Take Initiative

Silverton, second city in size in Marion county, is a payroll city of large proportions. It is also the center of a rich and thickly settled farming community, in the heart of the famous Willamette valley, "the garden spot of the world." Upon the union of these two resources—manufacturing and farming—rests the foundation of its prosperity.

Manufacturing of lumber plays a major part in Silverton's industrial life. Although there are other industries aplenty that contribute mightily to its support, farming is carried on in many types, from grain raising to the intensive culture of fruits. While the giant sawmills are busy creating wealth out of the areas of timber which are adjacent on the east, the flour mill, the cannery, the creamery are turning into finished products the raw materials from the farms. Silverton affords a happy example of the proper diversification of industry, the effect of which is found in her contented, prosperous, loyal people.

**Silverton Big Lumber Producer**  
Silverton is the largest lumber producing city in the Willamette valley and is excelled by very few individual communities anywhere in the Pacific Northwest, where the great bulk of the lumber now manufactured on this continent is made. Its two big plants, the Silver Falls Timber company and the Silverton Lumber company had an output last year, according to the Timberman, of over 120,000,000 feet. The former manufactured 94,000,000 and the latter 26,780,000. There were only four companies in the entire Pacific Northwest which boasted an output greater than that of the Silver Falls Timber company.

This institution, which has a property valued at several millions of dollars, came to Silverton in the spring of 1916. It is composed of eastern and Oregon capital. It erected a \$500,000 plant and began active operations one year later. It owns 20,000 acres of the best fir and hemlock timber, a supply that assures operation for years and years. This is connected with the mill at Silverton by a track of 35 miles long. The mill buildings, log pond and yards comprise a plot of 143 acres. The plant has a capacity of 225,000 feet of finished lumber every eight hours and gives employment to 500 men at the mill and to from 400 to 500 men in the woods. The buildings erected and used in connection with this industry, besides the mill proper, include a modern office building, power house, stacker house, dry kilns, sorting tables, planing mills, machine shop, car shops etc.

The Silverton Lumber company is owned practically by Silverton capital. It erected its plant in 1907 and has operated it continuously ever since, the company having the distinction of being one of the very few that have operated practically without a stop over a period of more than 15 years. It has a capacity of 125,000 feet every eight hours. Its plant occupies a site of 20 acres. It has given employment to 120 men at the mill and to a crew of 150 men in the woods. Its timber holdings are near Mehama, whence it ships

the logs to its mill by rail. The institution has been a great factor in the development of Silverton.  
Besides these two large plants, there are two smaller lumber companies, the Greer Lumber company which operates a mill four miles from Silverton and the John Brewer Lumber company about eight miles distant.

**Furnaces Are Manufactured**  
The Silverton Blowpipe company is an industry of great benefit to Silverton. It is owned by the Eastman Brothers, who came to Silverton in 1907 to in-

stall a blowpipe for the Silverton company. These young men, influenced by the then panicky times into thinking that their jobs might not be secure, conceived the idea of starting in business for themselves at Silverton. They did so and they have succeeded not only in establishing one of the most extensive and best equipped sheet metal working plants in the state but they have perfected a pipeless furnace, the "Sibloco," which is sold extensively throughout the country. They also manufacture blowpipe systems, which with their special hoods, suction pipes, fans and cyclone separators, are installed in many of the largest sawmills in the Northwest. The company has an output of about 400 furnaces a year and occupies a floor space of more than 17,000 square feet.

**Big Flour Center**  
Two flour mills turn into the finished product the grain crops which are raised in the Silverton country. More than this, one of them buys extensively from the outside in order to fill the demands of its domestic and export trade. This company, the Fisher Flouring Mills, has a daily capacity of 250 barrels of flour and 100 barrels of rolled oats and flaked wheat. It is kept busy day and night, except in the season of low water in Silver

ton. Working against handicaps of many kinds, he succeeded in putting up a pack of 100 tons of blackberries. In 1920 he purchased the present cannery site, organized the Silverton Food Products company with local capital, doubled its equipment and output. Since that time the output of the company has been appreciated by the public the unusual quality of the strawberry raised on the higher lands tributary to Silverton. These berries, large and firm, mature later than the berries on the lower bottoms, and make an unusually fancy pack. The company puts out two brands, Silvertona and Silverton, the latter being packed almost entirely for its apple pack.

Two other enterprises, the Hubbs Planing Mill and the Potter Sash and Door Factory, play an important part in Silverton's industrial life. They give employment to a number of skilled workmen and besides they enable Silverton's home builders to obtain their home equipment at home. During the past year, the city built approximately 200 new homes, which is a wonderful record for a metropolis of its size. Telephone System Independent

The Interurban Telephone company provides Silverton with telephone service. It occupies a new building just west of Silver

ton. The W. E. Loughmiller feed and flour mill manufactures flour for the domestic trade and carries on a general business in feed grinding and grain storage. Mr. Loughmiller has added a

number of new additions lately, mainly for warehouse room. The Silverton Foundry company discharges an important function in manufacturing and repairing logging machinery of all kinds as well as farm machinery. It affords employment for a number of skilled laborers and contributes significantly to Silverton's prosperity. It also manufactures hop and fruit stoves and does a general foundry business.

An industry which is of almost untold value to the agricultural interests of Silverton is the Silverton Creamery and Ice company. Its stockholders are all men who are interested in promoting the agricultural interests of the community, all of them being farmers. The plant has a capacity of 2000 pounds of butter a day. It sells a large portion of its product in Portland, where it enjoys a ready sale. The problem of the management is to obtain the butterfat enough to supply the demand. It has 240 patrons on its rolls and turns over to the support of Silverton a payroll of \$8,000 a month. In connection with the creamery, an ice plant is maintained with a capacity of three tons. It also is a market for eggs.

**Cannery Fills Void**  
With an output of 30,000 cases of canned fruits, for the raw material of which it paid the farm-

ers of the community \$60,000, and a yearly payroll of \$20,000, the Silverton Food Products Co. is of almost unestimable value to the community. Prior to its establishment in 1919, hundreds of tons of blackberries, not to mention other fruits, were going to waste in the Silverton district. Charles A. Hartley conceived the idea that this loss could be stopped by canning the berries and finding a market for them. He backed his faith with his money and in July, 1919, started a small cannery, which has developed into the present organi-

zation. Working against handicaps of many kinds, he succeeded in putting up a pack of 100 tons of blackberries. In 1920 he purchased the present cannery site, organized the Silverton Food Products company with local capital, doubled its equipment and output. Since that time the output of the company has been appreciated by the public the unusual quality of the strawberry raised on the higher lands tributary to Silverton. These berries, large and firm, mature later than the berries on the lower bottoms, and make an unusually fancy pack. The company puts out two brands, Silvertona and Silverton, the latter being packed almost entirely for its apple pack.

Two other enterprises, the Hubbs Planing Mill and the Potter Sash and Door Factory, play an important part in Silverton's industrial life. They give employment to a number of skilled workmen and besides they enable Silverton's home builders to obtain their home equipment at home. During the past year, the city built approximately 200 new homes, which is a wonderful record for a metropolis of its size. Telephone System Independent

The Interurban Telephone company provides Silverton with telephone service. It occupies a new building just west of Silver

ton. The W. E. Loughmiller feed and flour mill manufactures flour for the domestic trade and carries on a general business in feed grinding and grain storage. Mr. Loughmiller has added a

number of new additions lately, mainly for warehouse room. The Silverton Foundry company discharges an important function in manufacturing and repairing logging machinery of all kinds as well as farm machinery. It affords employment for a number of skilled laborers and contributes significantly to Silverton's prosperity. It also manufactures hop and fruit stoves and does a general foundry business.

An industry which is of almost untold value to the agricultural interests of Silverton is the Silverton Creamery and Ice company. Its stockholders are all men who are interested in promoting the agricultural interests of the community, all of them being farmers. The plant has a capacity of 2000 pounds of butter a day. It sells a large portion of its product in Portland, where it enjoys a ready sale. The problem of the management is to obtain the butterfat enough to supply the demand. It has 240 patrons on its rolls and turns over to the support of Silverton a payroll of \$8,000 a month. In connection with the creamery, an ice plant is maintained with a capacity of three tons. It also is a market for eggs.

**Cannery Fills Void**  
With an output of 30,000 cases of canned fruits, for the raw material of which it paid the farm-

ers of the community \$60,000, and a yearly payroll of \$20,000, the Silverton Food Products Co. is of almost unestimable value to the community. Prior to its establishment in 1919, hundreds of tons of blackberries, not to mention other fruits, were going to waste in the Silverton district. Charles A. Hartley conceived the idea that this loss could be stopped by canning the berries and finding a market for them. He backed his faith with his money and in July, 1919, started a small cannery, which has developed into the present organi-

zation. Working against handicaps of many kinds, he succeeded in putting up a pack of 100 tons of blackberries. In 1920 he purchased the present cannery site, organized the Silverton Food Products company with local capital, doubled its equipment and output. Since that time the output of the company has been appreciated by the public the unusual quality of the strawberry raised on the higher lands tributary to Silverton. These berries, large and firm, mature later than the berries on the lower bottoms, and make an unusually fancy pack. The company puts out two brands, Silvertona and Silverton, the latter being packed almost entirely for its apple pack.

Two other enterprises, the Hubbs Planing Mill and the Potter Sash and Door Factory, play an important part in Silverton's industrial life. They give employment to a number of skilled workmen and besides they enable Silverton's home builders to obtain their home equipment at home. During the past year, the city built approximately 200 new homes, which is a wonderful record for a metropolis of its size. Telephone System Independent

The Interurban Telephone company provides Silverton with telephone service. It occupies a new building just west of Silver

ton. The W. E. Loughmiller feed and flour mill manufactures flour for the domestic trade and carries on a general business in feed grinding and grain storage. Mr. Loughmiller has added a

number of new additions lately, mainly for warehouse room. The Silverton Foundry company discharges an important function in manufacturing and repairing logging machinery of all kinds as well as farm machinery. It affords employment for a number of skilled laborers and contributes significantly to Silverton's prosperity. It also manufactures hop and fruit stoves and does a general foundry business.

An industry which is of almost untold value to the agricultural interests of Silverton is the Silverton Creamery and Ice company. Its stockholders are all men who are interested in promoting the agricultural interests of the community, all of them being farmers. The plant has a capacity of 2000 pounds of butter a day. It sells a large portion of its product in Portland, where it enjoys a ready sale. The problem of the management is to obtain the butterfat enough to supply the demand. It has 240 patrons on its rolls and turns over to the support of Silverton a payroll of \$8,000 a month. In connection with the creamery, an ice plant is maintained with a capacity of three tons. It also is a market for eggs.

**Cannery Fills Void**  
With an output of 30,000 cases of canned fruits, for the raw material of which it paid the farm-

ers of the community \$60,000, and a yearly payroll of \$20,000, the Silverton Food Products Co. is of almost unestimable value to the community. Prior to its establishment in 1919, hundreds of tons of blackberries, not to mention other fruits, were going to waste in the Silverton district. Charles A. Hartley conceived the idea that this loss could be stopped by canning the berries and finding a market for them. He backed his faith with his money and in July, 1919, started a small cannery, which has developed into the present organi-

zation. Working against handicaps of many kinds, he succeeded in putting up a pack of 100 tons of blackberries. In 1920 he purchased the present cannery site, organized the Silverton Food Products company with local capital, doubled its equipment and output. Since that time the output of the company has been appreciated by the public the unusual quality of the strawberry raised on the higher lands tributary to Silverton. These berries, large and firm, mature later than the berries on the lower bottoms, and make an unusually fancy pack. The company puts out two brands, Silvertona and Silverton, the latter being packed almost entirely for its apple pack.

Two other enterprises, the Hubbs Planing Mill and the Potter Sash and Door Factory, play an important part in Silverton's industrial life. They give employment to a number of skilled workmen and besides they enable Silverton's home builders to obtain their home equipment at home. During the past year, the city built approximately 200 new homes, which is a wonderful record for a metropolis of its size. Telephone System Independent

The Interurban Telephone company provides Silverton with telephone service. It occupies a new building just west of Silver

ton. The W. E. Loughmiller feed and flour mill manufactures flour for the domestic trade and carries on a general business in feed grinding and grain storage. Mr. Loughmiller has added a

number of new additions lately, mainly for warehouse room. The Silverton Foundry company discharges an important function in manufacturing and repairing logging machinery of all kinds as well as farm machinery. It affords employment for a number of skilled laborers and contributes significantly to Silverton's prosperity. It also manufactures hop and fruit stoves and does a general foundry business.

An industry which is of almost untold value to the agricultural interests of Silverton is the Silverton Creamery and Ice company. Its stockholders are all men who are interested in promoting the agricultural interests of the community, all of them being farmers. The plant has a capacity of 2000 pounds of butter a day. It sells a large portion of its product in Portland, where it enjoys a ready sale. The problem of the management is to obtain the butterfat enough to supply the demand. It has 240 patrons on its rolls and turns over to the support of Silverton a payroll of \$8,000 a month. In connection with the creamery, an ice plant is maintained with a capacity of three tons. It also is a market for eggs.

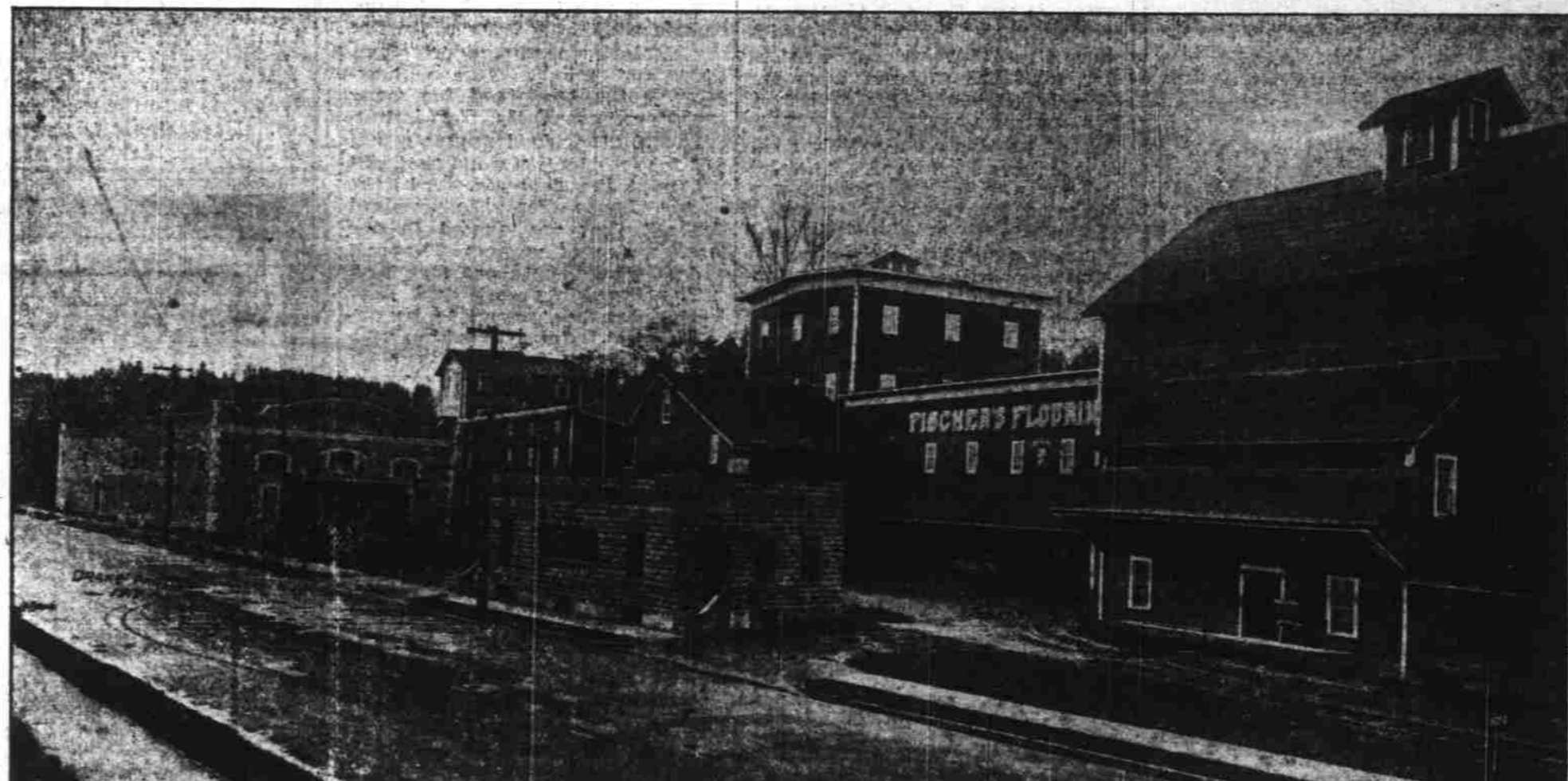
**Cannery Fills Void**  
With an output of 30,000 cases of canned fruits, for the raw material of which it paid the farm-

ers of the community \$60,000, and a yearly payroll of \$20,000, the Silverton Food Products Co. is of almost unestimable value to the community. Prior to its establishment in 1919, hundreds of tons of blackberries, not to mention other fruits, were going to waste in the Silverton district. Charles A. Hartley conceived the idea that this loss could be stopped by canning the berries and finding a market for them. He backed his faith with his money and in July, 1919, started a small cannery, which has developed into the present organi-

zation. Working against handicaps of many kinds, he succeeded in putting up a pack of 100 tons of blackberries. In 1920 he purchased the present cannery site, organized the Silverton Food Products company with local capital, doubled its equipment and output. Since that time the output of the company has been appreciated by the public the unusual quality of the strawberry raised on the higher lands tributary to Silverton. These berries, large and firm, mature later than the berries on the lower bottoms, and make an unusually fancy pack. The company puts out two brands, Silvertona and Silverton, the latter being packed almost entirely for its apple pack.

Two other enterprises, the Hubbs Planing Mill and the Potter Sash and Door Factory, play an important part in Silverton's industrial life. They give employment to a number of skilled workmen and besides they enable Silverton's home builders to obtain their home equipment at home. During the past year, the city built approximately 200 new homes, which is a wonderful record for a metropolis of its size. Telephone System Independent

The Interurban Telephone company provides Silverton with telephone service. It occupies a new building just west of Silver



Fischer Flouring Mills, Silverton, Whose Output Finds Immediate Consumption in Home and Foreign Markets—Big Asset

Established 1910  
**Silverton Variety Store**  
T. M. Lukens, Prop.  
Specialty made of 5, 10, 15 and 25c articles  
111 First Street  
SILVERTON, ORE.

**"Cozy Maid"**  
Ice Cream  
**"Cozy Maid"**  
and SILVERTONIA CHOCOLATES  
Meals—Lunches  
**The Cozy Confectionery**  
213 Main St.

**Cusiter's Quality Store**  
207 Main Street  
Fancy and Staple Groceries, Dry Goods, Dishes, General Merchandise.  
**Geo. Cusiter**  
Silverton, Oregon

**One Year in Silverton**  
We are using double the space we had to commence with. Our sales have been quadrupled. Quality Goods and Fair Prices has been our motto.  
We carry a complete line of Hardware, Stoves, Ranges, Sash, Doors, Paints, Oils, Queensware, Granite, Aluminum, and Tinware.  
**Wilbur A. Cochran & Son**

**F. W. Pettyjohn**  
AUTOMOBILES  
**Willys-Knight Overland Gardner**  
Silverton, Ore.

**Bentson's Grocery**  
Home of the Best Groceries  
We believe every thing you buy of us will give entire satisfaction  
Phone Main 212  
Prompt delivery to all parts of the city  
First St., Silverton, Or.

**CITY MEAT CO.**  
Tegland & Larson Proprietors  
SILVERTON OREGON

Res. Phone Black 1341  
Office Phone Black 771  
**D. E. GEISER**  
REAL ESTATE  
Farms and City Property and Trades  
Office 110 S. Water St.  
SILVERTON, ORE.

**INTERURBAN TELEPHONE CO.**  
Now in Our New Building  
**BETTER SERVICE at the OLD PRICE**  
Come in and See Us

**Julius Alm & Sons, Inc.**  
The Progressive Grocer and Gents' Furnisher  
Established 1903  
Silverton, Oregon

**P. W. NOFTSKER**  
Vulcanizing and Battery Shop  
Battery Recharging and Repairing—Vulcanizing, Oils, Gas, Tires, Accessories  
Prompt Service—Expert Work  
302 No. Water St.

WE FURNISH THE HOME COMPLETE  
Our Prices Are Interesting  
**GEORGE A. LANDON**  
COMPLETE HOUSE FURNISHER  
212 Main Street SILVERTON, OREGON  
**L. E. INMAN**  
PLUMBING AND HEATING  
Now at our new location, 110 South First Street  
Silverton, Oregon

**SILVERTON LAUNDRY**  
We Wash 'Em Clean  
**STAMEY BROS.**  
Silverton, Oregon

**Silverton Blowpipe Co.**  
Manufacturers of **Sibloco Furnaces**  
General Sheet Metal Work  
Silverton, Oregon

**The Wall Paper and PAINT STORE**  
**M. L. Guttenburg**  
212 First St.  
SILVERTON, ORE.

**SILVER FALLS DOUGLAS WHITE SP LUMBER**  
SILVERTON