

# SELLING SALEM DISTRICT

Devoted to Showing Salem District People the Advantages and Opportunities of Their Own Country and Its Cities and Towns.

The Way to Build Up Your Home Town Is to Patronize Your Home People

The Surest Way to Get More and Larger Industries Is to Support Those You Have

Selling Salem District is a continuation of the Salem Slogan and Pep and Progress Campaign

This campaign of publicity for community upbuilding has been made possible by the advertisements placed on these pages by our public-spirited business men---men whose untiring efforts have builded our present recognized prosperity and who are ever striving for greater and yet greater progress as the years go by.

We Will Give Our Best Efforts

At all times to assist in any possible way the development of the fruit and berry industries in this valley.

Oregon Packing Co.

Hunt Bros. Packing Company  
Salem, Oregon

Quality Fruits,  
Proper growing,  
Proper packing,  
Intelligent selling,  
Courteous treatment,  
Community service,

Are the steps to business success

DEHYDRATED and CANNED FRUITS AND VEGETABLES

Oregon Products

King's Food Products Company  
Salem—Portland—The Dalles  
Oregon

Gideon Stolz, Co.  
Manufacturers of Dependable Brand Lime-Sulphur Solution  
The brand you use depends on for purky and test  
Prices upon application  
Factory near corner of Summer and Mill St.  
Salem, Oregon

Willamette Valley Prune Association  
The oldest Association in the Northwest.  
W. T. JENKS  
Secretary and Manager  
Trade & High St.,  
Salem, Oregon

NELSON BROS.  
Warm Air Furnaces, plumbing heating and sheet metal work, tin and gravel roofing, general jobbing in tin and galvanized iron work.  
315 Commercial St. Phone 1906

DIXIE BREAD

Dixie Health Bread  
Ask Your Grocer

Take the Trolley

SAFETY COMFORT and ECONOMY Anywhere—Anytime  
Southern Pacific Lines

FOR YEARS AND YEARS

The Statesman has been supplying the wants of the critical job printing trade.  
Proof positive we are printers of work and merit.  
Modern equipment and ideas are the ones that get by.

STATESMAN PUBLISHING COMPANY

Phone 26 & 244, 2nd & 1st St.

## A SPLENDID AND A COMPREHENSIVE REVIEW OF THE WORK ON THE STATE HIGHWAY PROGRAM, BY THE SECRETARY

Oregon First State West of the Mississippi to Have a Paved Highway the Entire Length of the State—What Has Been Accomplished, and What Is Proposed—There Can Be No Turning Back; Work Must Go on—Ten Millions of Federal Funds to Be Matched in the Next Five Years.

By ROY A. KLEIN.

With the present season Oregon begins its seventh year on the state highway program which was inaugurated in 1917. In that period the work accomplished has resulted in 695 miles of highway graded and paved, 1197 miles graded but not surfaced, and 475 miles graded but not surfaced. In addition there are 143 miles paved on the state highway system in Multnomah county, and incorporated cities of greater than 2000 population, so that the total mileage of the state highway system which is paved, is 838 miles. The gross expenditures of the highway commission in that period have been \$54,737,414.81 of which \$6,747,047.94 is county funds, \$4,546,539.65 government funds, and \$97,381.27 railroad funds expended on grade crossing eliminations, and \$43,346,454.95 state funds.

Oregon First State. The outstanding features of the work accomplished are: The Pacific highway, 345 miles in length,

### KALSOMINE

Spring house cleaning time is now here  
See our line of beautiful Sherwin-Williams Tints  
Also complete line of all SHEKWIN-WILLIAMS House Paints  
Falls City-Salem Lumber Co.  
349 So. 12th St.  
Phone 813  
A. B. Kelsay, Mgr.

Ed. CHASTAIN CLOTHING CO.  
305 State St.

Men's and Young Men's Clothing and Furnishings  
Use my stairs. It pays

SALEM IRON WORKS

Established 1880  
Founders, Machinists and Blacksmiths  
Corner Front & State Sts.  
Manufacturers of the "Shand" pump for irrigation and other purposes. Correspondence solicited. Irrigation information supplied.  
Makers of Salem Iron Works Trac Saws.

HOTEL BLIGH

100 rooms of Solid Comfort  
A Home Away From Home

is paved or under contract for paving from the Columbia river to the California state line with the exception of small gaps which have been left for future overcrossings of the railroad and the gap between Junction City and Harrisburg, which has been left a graveled road on account of overflow conditions in the Willamette river bottom. The completion of this highway gives Oregon the distinction of being the first state west of the Mississippi to have a paved highway the entire length of the state.

The Old Oregon Trail. The West Side Pacific highway is also paved or under contract for paving its entire length from Portland to Junction City, except gaps for railroad overcrossings. The Columbia River highway is paved from Portland to Astoria and beyond to Seaside on the west, and from Portland to The Dalles on the east. From The Dalles to Pendleton it is graded to standard and gravel surfaced, and, when a single gap, not over four miles in length on the summit of the Blue Mountains which is under contract is completed, the Old Oregon Trail will be completely graded and graveled between Pendleton and the Idaho state line at Ontario.

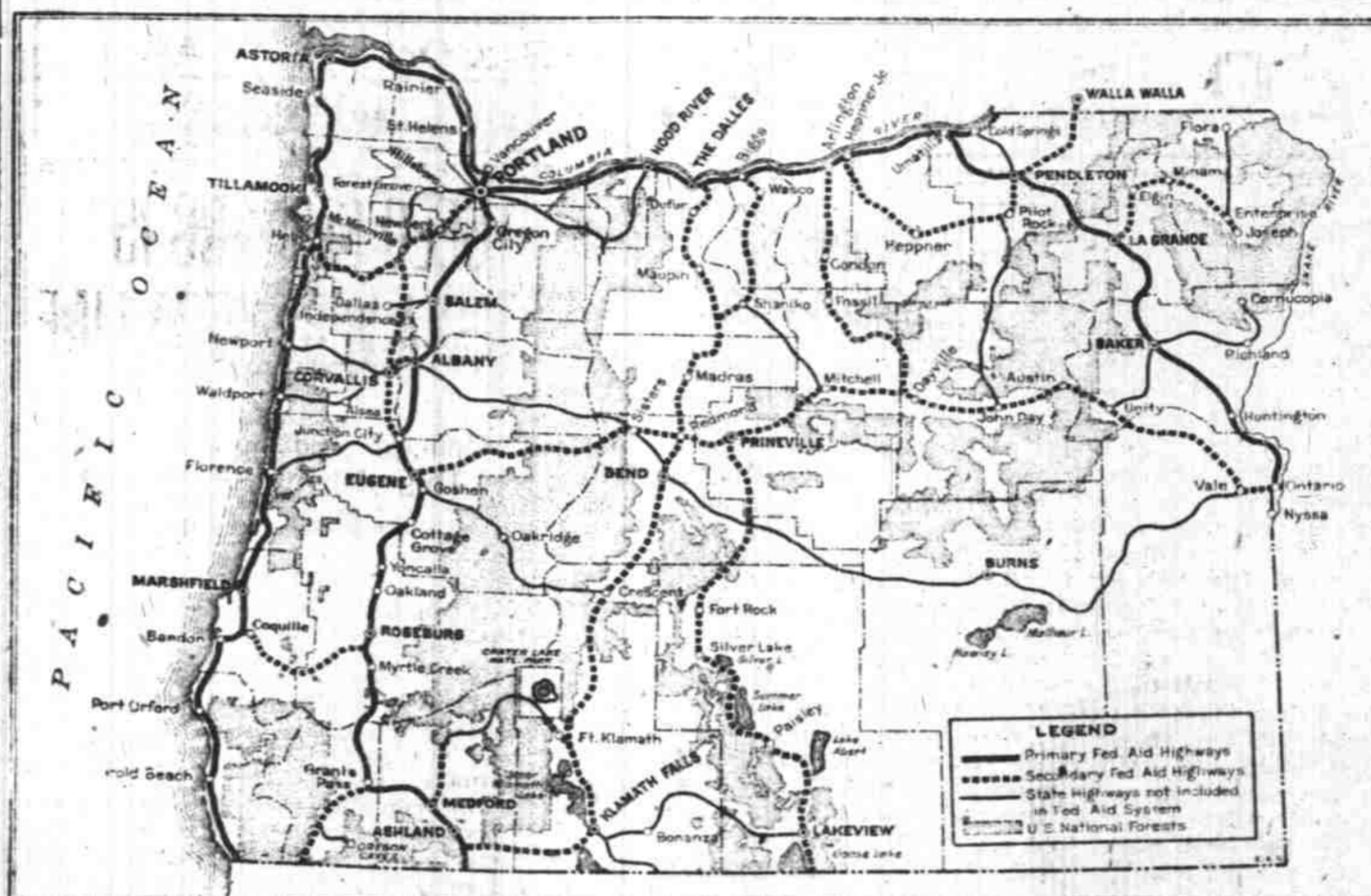
The John Day Highway, with a few exceptions, is now graded and graveled from Arlington through Condon, Post and Spray to Pringle City, and a beginning has been made toward opening the eastern end over the Blue mountains with a \$300,000 contract. The Dalles



W. W. ROSEBRAUGH CO.  
Foundry and Machine Shop  
17th & Oak Sts., Salem, Or.  
Phone 888

We Are Out After Two Millions We are now paying over three quarters of a million dollars a year to the dairyman of this section for milk.  
"Marion Butter" Is the Best Butter  
More Cows and Better Cows is the right need  
MARION CREAMERY & PRODUCE CO.  
Salem, Ore. Phone 2488

Salem Carpet Cleaning and FLUFF RUG WORKS  
All sizes of Rag and Fluff Rugs Woven  
Old Mattress Steaming and Renaking  
Otto Zwicker, Prop.  
Phone 1874  
13 1/2 & Wilbur Streets



MAP SHOWING THE FEDERAL AID HIGHWAY SYSTEM FOR THE STATE OF OREGON AS APPROVED BY THE U. S. BUREAU OF PUBLIC ROADS

Federal cooperation in the construction of highways can be obtained only upon projects which are on the Federal aid system. Note that the highways represented by the lighter solid black lines

California highway has been further improved by construction work in every county through which it passes.

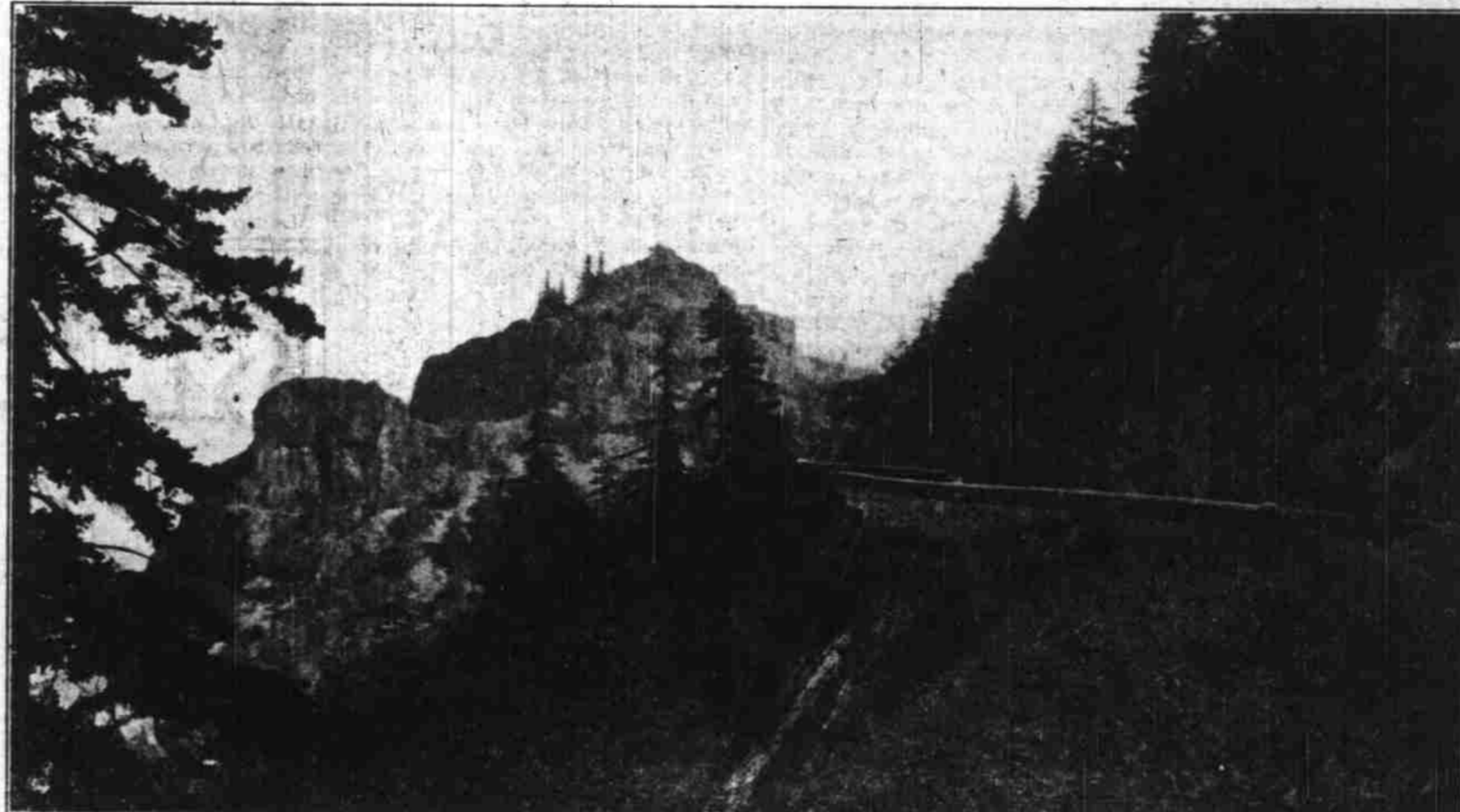
The Roosevelt Highway Rapid progress has been made on the northern and southern ends of the Roosevelt Coast highway.

forest which has not been placed under contract for surfacing.

The Oregon-Washington highway is now completed except the section between Heppner and the head of Vinson canyon. Also a noteworthy improvement which should be included is the La

river at Winchester; elimination of the railroad grade crossing in Douglas county at Oakland, Shady, Sutherland, and Wilbur by the construction of overhead structures.

West Side Highway Completion of the paving on the West Side Pacific highway



ON THE SECTION OF THE COLUMBIA RIVER HIGHWAY BETWEEN HOOD RIVER AND MOSIER

In Curry county many bad sections have been eliminated, and between Tillamook and Astoria all year travel is now possible.

Important connecting highways between the Pacific highway and the coast have been improved. The Corvallis-Newport highway has been graded almost its entire length and many miles have been rocked. The Coos Bay-Roseburg highway has been improved by trading and rocking, and next year both of these roads will be opened for all year travel.

Oregon Caves Highway Connecting roads between the Pacific highway and The Dalles-California highway on which considerable improvement work has been done this biennium are the McKenzie, Crater Lake and Ashland-Klamath Falls highway. The Oregon Caves has been opened up by construction of the Oregon Caves highway. The Mount Hood Loop is now all under contract from the Multnomah-Clackamas county line around the mountain to Hood River city for grading and rock surfacing, except a ten-mile gap in the national

Grande-Joseph highway now under contract or completed the entire distance from La Grande to Joseph. An important road for eastern Oregon is the Prineville-Mitchell section, part of which is completed and the balance under contract.

The Program for 1923 The program proposed for 1923 is largely a program of closing the gaps on many important through roads and will probably reach an estimated cost of \$8,000,000.

On the Pacific highway the major improvements are the elimination of the railroad crossing at Canemah and the construction of a new approach into Oregon City from the south, eliminating the timber trestle along the river; the construction of a new concrete and steel bridge over Pudding river near Aurora; the paving of the uncrossing section three miles north of Albany; completion of the paving between Harrisburg and Halsey; completion of surveys, designs and estimates for the Willamette river bridge at Harrisburg; completion of the bridge across the Umpqua

from Portland to Junction City, 112 miles, is on the program, if the present controversy in Polk county is settled and many others.

Also completion of the Corvallis-Newport highway between Wren and Newport, graded and rock surfaced, making possible all-year travel between Corvallis and Newport; completion of the Roseburg-Coos Bay highway graded and rock surfaced, 65 miles, completion of the Ashland-Klamath Falls highway, graded and rock surfaced, 57 miles, completion of the Crater Lake highway, graded and rock surfaced from Medford to Klamath Falls, 147 miles.

Completion is on the program of the Neskevin-Siletz river and Newport-Otter rock sections of the coast highway, insuring connection between Newport and Tillamook in 1924. Also improvement of the coast highway between Coos bay and the Umpqua river; also improvement of the coast highway in Curry county. Also bridge across Lewis and Clark river in Clatsop county,

placed under contract for completion in 1924. Also further work on the McKenzie highway between Bend and Eugene; further work on the John Day highway and also on the Lakeview-Prineville highway; further work on The Dalles-California highway in Wasco, Deschutes, Jefferson and Klamath counties.

Since December 1, 1922, 24 contracts have been awarded at a total estimated cost of \$1,525,000. These contracts represent 104 miles of grading, 94 miles of macadam and 3 1/2 miles of paving.

Legislation Will Help Legislation enacted by the session of the legislature just closed will materially assist the state highway program. The additional tax of 1c per gallon on gasoline will produce approximately \$500,000 per year additional revenue, which will be expended on the state highway system.

Under the new laws the highway commission is given authority to route the state highways through cities and towns, which will result in direct location on streets best adapted to carrying the through travel, without regard to local influences. The highway commission is also given control of telephone, telegraph and power lines on state highways. The present law providing that the commission could close roads or limit the loads, when it seems for the best interests of the state, was amended to provide an adequate penalty for violation.

Park and Camp Sites, Etc. Acting on the authority given by the 1921 legislature, the commission reports that some pro-

civic organizations to the latter feature is encouraging, and it is expected and hoped that this local assistance will continue as the results accomplished become more noticeable.

It has been the thought of the commission that in very many instances public-spirited citizens would be glad to donate park sites and thus conserve the state funds for improvements, and this expectation has been realized to a limited extent, several such gifts having been received which are gratefully acknowledged and which have been accepted for the state.

A gift of approximately 5 1/2 acres on the West Side highway in Polk county was received from Sarah, James and Amanda Helmick. Twenty acres at Clatsop Crest have been deeded to Clatsop county for a public park by the Bradley heirs. A strip of land between the Pacific highway and the Umpqua river south of Dilhard, containing approximately 6.3 acres, has been donated to the state by J. H. and Catherine Booth of Roseburg.

Eola Camp Grounds The commission has acquired by condemnation certain parcels of land on the Columbia River highway loops just east of Hood River in order to prevent the erection of buildings which would cut off the sight distance around the curves. Another purpose was to protect the roadbed from being undermined by the removal of gravel on the adjoining property. Ten acres on the Salem-Dallas highway near Eola have been acquired from Thomas Holman for \$1000 for a camping place, but no improvement work has been done. In order to improve the sight distance on a sharp curve near Rainier, two acres have been purchased from Dr. Ditto for \$600, a dilapidated barn removed and the property otherwise improved.

Many Beauty Spots There are many other spots along our highways which should be secured and preserved for future generations before the timber and shrubbery have been removed or destroyed or other physical features marred. Several donations of desirable property have been promised, and are now in process of negotiation.

In Deschutes county, by means of close cooperation between the Deschutes county court, the Brooks-Seanlon Lumber company, the forest service and the commission, arrangements were made to preserve the standing pine on a section of the Dalles-California highway south of Bend. This was done under authority of the Deschutes forest exchange bill recently passed by congress under which the timber company was permitted to exchange their holdings for other areas in the national forest.

Drinking fountains have been erected, some of which are ornamental, at a few places where pure water could be obtained. It is the intention of the commission to construct more of these fountains from time to time.

(Continued on page 3)

**HOLLOW TILE**  
A PROTECTION AGAINST HAZARDS  
ALL SIZES  
MOST COLD SPELL IN THE FIRE  
ALSO DRAIN TILE, PARTITION TILE AND BRICK  
Salem Brick and Tile Co.  
Salem, Oregon