

## AUTOMOBILES, TRUCKS AND TRACTORS

### MOTORCYCLES—BICYCLES—ACCESSORIES

#### GLOOMY PICTURE JAPAN'S FUTURE

Employer Writes Article; Wages Advance and Efficiency Decreases.

TOKIO, March 10.—Sanji Muto, president of Kanegafuchi Spinning Co., in an article contributed to the Osaka Asahi, draws a gloomy picture of the future of Japan's economic life. "Japan is

a third country in the world as regards the density of population," says Mr. Muto, "and since her population is increasing at an annual rate of something like 600,000, the country is more and more becoming dependent on foreign countries for the supply of food stuffs.

"As all the possible outlets for her surplus population have been closed, it will be necessary for Japan to develop industries so that money with which to buy food may be obtained. But Japan is lacking in raw materials, the cost of fuel is high and, in addition, the rising cost of production tends to retard the growth of industries and the development of export trade. Taking 100 as the index figure for prices and wages in 1900, these figures now are 264 and 415.

"The remarkable rise in prices as noted above is due," Mr. Muto said, "to the heavy burden of taxation, adoption of a protective policy, inflation of currency, rising wages and increase of consumption. In recent years wages have made a tremendous advance, but the efficiency of workers has been falling in inverse proportion, while the consumption of commodities, especially articles of luxury, has been increasing at a remarkable rate. In other words the consuming classes have been steadily increasing, but the producing classes are declining.

"Herein lies an economic crisis that is impending. Unless the people are awakened to this important fact and strive to ameliorate the existing state of affairs Japan will be plunged into a very grave crisis."

#### NEW CORPORATIONS

Notice of increase in capitalization from \$50,000 to \$150,000 was filed by the Oregon Canning

Articles of incorporation were filed yesterday by the Pacific Spruce Northern Railway company of Portland, capitalized at \$200,000. The incorporators are W. Lair Thompson, W. A. Illidge and Ralph H. King. The company will deal in timber. Other articles were:

Fox Brothers, Troutdale; incorporators, Francis May Fox, Milton I. Fox, Emanuel M. Fox; capitalization, \$10,000; merchandise.

Roger W. Cary company, Portland; incorporators, R. W. Cary, Irene S. Cary, Maud E. Crawford; capitalization, \$10,000; real estate.

Walter S. Skiff company, Portland; incorporators, Walter S. Skiff, Frederick W. Skiff, L. B. Cole; capitalization, \$10,000; in-

company of Portland.

Classified Ads in The Statesman Bring Results

#### ATTEMPT MADE TO STEAL WILL

War Romance Between Bosnian Soldier and Japanese Woman Is Revealed.

BELGRADE, March 10.—Mystery surrounds a recent attempt to steal a will in Belgrade, and the local courts are trying to solve the riddle. The information thus far available points to a war romance in Siberia between a Bosnian soldier and a Japanese woman, and further knowledge is being sought through diplomatic channels at Tokio.

A thief stole a document from a translation bureau here, and was captured. He admits he did not get what he was after. He says he sought a will made by the Japanese woman in question, who is described as wealthy. This man is the authority for the following tale.

Ivan Mrkonja, a Bosnian, 30 years old, belonged to one of the Austrian divisions which deserted the Central powers and joined with the Russians. When the Bolshevik revolution came and the Russians disbanded the old army, Mrkonja joined one of the wandering bands which fought Bolshevism, and wandered off toward Siberia. He was swept on oastward with the Czech-Slovaks whom Trotsky sought to exterminate because they would not join the communists.

Mrkonja's detachment was so hard pressed that he and all his associates fled into the Siberian forces and scattered. In the forests Mrkonja met a Japanese woman wandering alone. She knew

little Russian, but managed to tell him that her husband had been killed while fighting the Bolsheviks. She had been condemned to death, but escaped from the forest.

Mrkonja and the woman purchased a team and made their way southward into Mongolia. There they found an interpreter, and the woman explained to her rescuer that she was a member of the family of Togahama, and that her husband had left her a valuable silk business. In expression of her gratitude to Mrkonja, she asked him to accompany her to Tokio and take charge of her business. The Bosnian consented and remained in Tokio for over two years.

He was successful in developing the business, but became homesick for Bosnia and decided to return his wife and child. He confessed to the Japanese widow that he was married. She insisted that he must return to Japan and bring his Bosnian family with him.

Also, she is alleged to have made a hand-written will in which he was designated as the sole heir to her estate, said to be worth several million yen.

Mrkonja came to Bosnia. He

remained with his family for only a few days, and then suddenly disappeared. His wife in Bosnia does not know where he is, and testimony introduced in the court has not made it clear whether Mrkonja, or somebody else, had placed the much-sought Japanese will in the hands of the translation bureau from which the thief tried to steal it.

The Belgrade police have enlisted the aid of the government, which has directed that diplomatic inquiries be made in Tokio concerning the Togahama family.

#### Totally Different Method

A member of an athletic club, after swimming the length of the large tank in the basement of the institution, came out puffing and blowing, apparently exhausted.

"You don't manage your breathing right," said the swimming instructor. "It ought not to tire you so. As to the upper part of your body, including your arms, you use exactly the same muscles and in very much the same way in swimming as in sawing wood."

"No, sir," gasped the swimmer. "When it comes to sawing wood, I use the muscles of some other man."—Philadelphia Ledger.

#### Accident Commission Funds Total Over Five Million

The total of all assets of the state industrial accident commission on February 28 was \$8,059,608.94, according to a statement given out by the commission yesterday. The statement follows:

Assets—On deposit with state treasurer invested in bonds, \$4,665,586.71; cash \$295,464.91; total deposited with state treasurer, \$4,961,051.62; cash in bank, \$59,205.87; city and county warrants, \$8,866.80 cash on hand, \$7,043.42; total ledger assets, \$5,036,117.71; premiums in course of collection, \$23,491.23; total all assets, \$5,059,608.94.

Liabilities—Reserve a catastrophe fund, \$71,893.29; reserve rehabilitation fund, \$71,498.48; net special reserve for unpaid

workmen's compensation, losses and claims, account of permanent partial disability, \$886,245.10; fatal cases, \$1,900,607.04; total permanent disability, \$322,779.79; depreciation reserve to take care of any loss that may be incurred in respect of realization upon investments, \$100,000; reserve necessary to meet claim payments covered by outstanding final settlement vouchers, \$2,416.68; House Bill No. 99, reimbursing City of Canby, \$1,352; reserve based on actual experience to take care of pending claims, \$689,970.84; reserve permanent partial disability not over 24 months, \$15,860.95; unearned premiums, \$19,062.85; unclaimed warrants cancelled, \$6,310.19; unpaid bills as of February 28, 1923, \$2,913.40; unpaid medical aid refunds, \$733.62; unpaid dividends, \$121,306.25; surplus as required by Section 6624 Oregon laws as

amended, \$300,000; surplus, \$546,658.45; unassigned surplus, excluding state appropriation, \$457,070.26; total liabilities and surplus, \$5,059,608.94.

Those who favor the use of arbitration in the settlement of actions that grow into lawsuits, think it might be employed to relieve the courts in all cases except divorce and criminal actions. Why not divorce also? Many a discordant couple only need a mutual friend to eliminate misunderstandings.

#### RIMS

and Rim Parts for all Cars  
Free Expert Advice  
IRA JOERGENSEN  
150 South High Street

#### RELIANCE AUTO PAINTING CO.

219 State St.

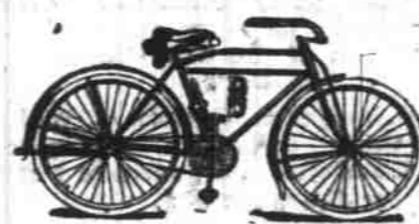
Cor. Front St. Phone 937

#### TIRES

STANDARD Guarantee  
Factory Firsts  
We Have Just Received Our  
Spring Stock

30x3 1/2	Fabric	Price
Fabric	.....	\$6.95
Cord	.....	9.95
Cords	Size	Fabric
\$	30x3	\$ 6.75
14.35	32x3 1/2	11.50
16.50	31x4	12.50
17.95	32x4	12.95
18.95	32x4 1/2	13.75
19.75	34x4	15.00
23.00	32x4 1/2	19.50
24.50	32x4 3/4	20.50
25.50	34x4 1/2	.....
26.50	35x4 1/2	.....
31.80	35x4 3/4	27.50
35.90	35x5	.....
31.00	35x5	.....
39.70	37x5	.....
56.65	36x6	.....

MALCOM TIRE CO.  
Commercial & Court Streets  
SALEM — ORE.  
(Established 1917)



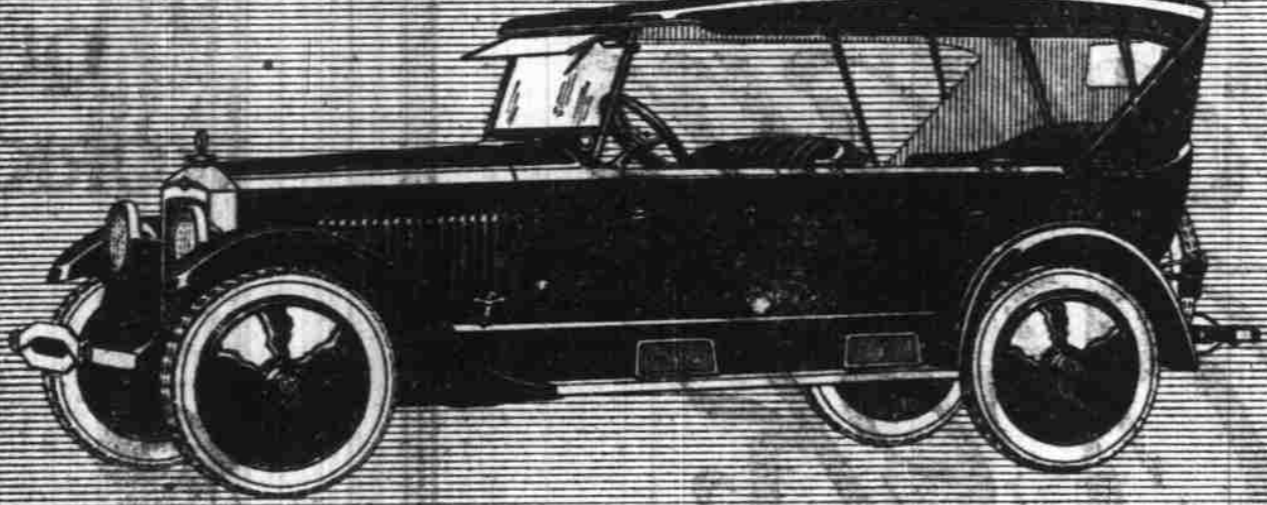
Dayton  
AND  
Columbia  
Tires, Supplies and  
Parts

A Bicycle for Health and Prosperity

Lloyd E. Ramsden

387 Court St.

## STUDEBAKER



23 SERIES BIG-SIX TOURING CAR \$1750

Many people make the mistake of buying a car without enough seating capacity.

Then when they want to take their friends along, the children have to sit on someone's lap, the foot space is all jammed up with luggage, and everybody is crowded and uncomfortable.

The Studebaker Big-Six Touring Car has two comfortable auxiliary seats that fold out of the way. It is a big, roomy five-passenger car except when you need it for seven, and then it's a comfortable, convenient seven-passenger car—something which a five-passenger car can never be. And there is still room for the luggage.

Come in and look at the Big-Six Touring Car. No matter how much you pay we don't believe you can find a more satisfactory car.

Its reliability has been proved in the service of thousands of owners. Correct design, highest quality of materials and precise workmanship are evident throughout every detail of its construction. Equipment is complete—even to an extra disc wheel with cord tire, tube and tire cover and bumpers, front and rear.

The name Studebaker is assurance of satisfaction.

1923 MODELS AND PRICES—f. o. b. factories		
LIGHT SIX 5-Pass. 119" W. B. 40 H. P.	SPECIAL SIX 5-Pass. 119" W. B. 50 H. P.	BIG-SIX 7-Pass. 126" W. B. 60 H. P.
Touring.....\$ 975	Touring.....\$1275	Touring.....\$1750
Roadster (3-Pass.) 975	Roadster (3-Pass.) 1250	Speedster (3-Pass.) 1835
Coupe-Roadster (3-Pass.) 1225	Coupe (4-Pass.) 1675	Coupe (4-Pass.) 2400
Sedan.....1550	Sedan.....2050	Sedan (3-Pass.) 2550
		Sedan.....2750

Terms to Meet Your Convenience



Marion Automobel Co.

235 S. Commercial St. SALEM Phone 362

THIS IS A STUDEBAKER YEAR

## Just One Year Old Today

We have been in business for one year. We are now sure that the policy on which we started is right.

Personal attention and close inspection on every job. To employ only the best workmen and expert mechanics so that we can guarantee our work absolutely.

To make our charges reasonable and consistent.

Above all to repair every car JUST RIGHT.

Let's make 1923 the best.

## HARBISON & CLEVELAND

Phone 298 229 State Street  
RACINE TIRES AUTHORIZED FORD SERVICE FORD PARTS

## TIRES

GOOD TIRES AND GOOD PRICES

They are Fisk Premier Cords

30x3 1/2	Oversize Fisk Premier Cord	\$12.65
31x4	—Use 30x3 1/2	
32x4	Oversize Fisk Premier Cord	24.30
33x4	Oversize Fisk Premier Cord	25.00
32x4 1/2	Oversize Fisk Premier Cord	31.45
33x4 1/2	Oversize Fisk Premier Cord	32.10
34x4 1/2	Oversize Fisk Premier Cord	32.90
33x5	Oversize Fisk Premier Cord	39.00
35x5	Oversize Fisk Premier Cord	41.15

YOURS WHILE THEY LAST

"JIM"

## SMITH & WATKINS

Our Service Car is for Your Use

125-147 North High Street

Phone 44

## Free HERE THEY GO AGAIN

With the Following Used Cars Sold From  
March 11th to March 18th. FREE

A slip good for \$50.00 in trade will go with each car.

1920 Mitchell—

New paint, new rubber, spot light, \$700

1920 Special Six Studebaker—

Good rubber, good paint, a dandy at \$790.

1920 Dodge—

Over-size tires, bumper, motor meter, spotlight, cutout, \$625.

1920 Dort—

Oversize tires, good paint, mechanically O. K., \$375.

Every Day is Bargain Day at the  
Marion Auto Co.

We Give Terms. See ACKERMAN

Marion Automobile Co.

Phone 362 235 S. Commercial St.

Open All The Time