

AUTOMOBILES, TRUCKS AND TRACTORS

MOTORCYCLES — BICYCLES — ACCESSORIES

NUMEROUS BLUE PRINTS NEEDED

Fifteen Prints Needed for Every Change in Car; Departments Supplied

Four hundred thousand square feet of blue print paper are used each year in the drafting departments of the Oakland Motor Car company, Pontiac, Michigan, or enough to paper the walls of more than 300 average sized homes. This paper is used by the drafting divisions of the designing engineering and tool engineering departments.

The tremendous amount of details and records to be kept by the designing engineering department of a large automobile company may be gleaned from the fact that approximately 50,000 blue prints of the parts of the car are on file at the Oakland Motor Car company.

Every time a change is made in the design of a part, 15 new prints are made to replace the old prints and sent to the various departments in which the parts are manufactured.

Change notices are likewise sent to each department.

Approximately 20 parts list books are kept on hand, giving the details of every part that goes into the car, sub-assemblies, parts and large unit assembly parts. Changes are made in these books, too, each time a change is made in any blue print.

Every change in design must first have the approval of the chief engineer before it is presented to the head of the company for final decision.

Thieves Hide Stolen Food in Old Cemetery

MOSCOW, Dec. 19.—Ingenuous thieves of this city have been using an old graveyard in which

RIMS

and Rim Parts for all Cars
Free Expert Advice
IRA JORGENSEN
150 South High Street

to hide food supplies pilfered from railroad cars. The loot was buried at night under what, the next day, looked like newly made graves. Ultimately the police recovered 15 tons of sugar and half as much cocoa and flour, all of which had been abstracted from relief supplies.

Men's Suits in England Said to Be Cheaper

LEEDS, Dec. 13.—The textile trade is considerably disturbed by the announcement that three million yards of woolen tweeds and serges, sufficient to make 90,000 men's suits, and about seven million yards of cotton trimmings, linings and linen canvases have been thrown on the market.

These materials form part of the surplus that passed through the disposals board. An Italian syndicate made an offer some time ago which was accepted, but the contract was not completed and the goods have now been forfeited.

"My Wild Irish Rose" will be the attraction at the Liberty theatre today. All those who love the land of the shamrock will so wild over this splendid play, which tells a thrilling story of life in the Emerald Isle in the early days of Queen Victoria's reign.

SPARK PLUG A MINUTE MADE

Toledo Factory Turns Out 120,000 Champion Plugs Each Working Day

The factory of the Champion Spark Plug company at Toledo is said to be the largest in the world devoted to making this important article of motor car equipment.

On its present schedule the Champion company is making 120,000 spark plugs each working day, which means that they are being produced at the rate of 271 per minute.

It doesn't mean that Champion plugs are really turned out in fractions of a second, of course. Actually each plug is several days in process of manufacture. But it does mean that in 1922 the Champion company made more than 35,000,000 complete spark plugs.

The cores are made in the Champion plant at Detroit under the direction of ceramic scientists of national reputation. In

the Toledo Champion plant the shell is made and the assembling done—largely by automatic machinery, most of it designed by Champion engineers.

Champion spark plugs are regular equipment on many motor cars in every class, from Ford to the American rolls-Royce, the highest priced car produced in this country.

Prominent Californian Dies at Football Game

STADIUM, Stanford University, Dec. 30.—Charles H. Bentley, vice president of the California Packing corporation and prominent resident of San Francisco, died of apoplexy while attending the football game here today between Stanford and Pittsburgh.

Dr. T. M. William, chairman of the Stanford board of athletic control, and a Palo Alto physician was sitting close to Mr. Bentley in the stand, and went to his aid when he was stricken. He died instantly and his body was taken to an undertaking establishment in Palo Alto.

Read the Classified Ads.

400 ADDITIONAL HORSE POWER ON

Salem Paper Mill Added This Much Yesterday; Will Make it 1000

Four hundred additional horse power was made available for the Oregon Pulp & Paper company yesterday when the company completed its new power plant at the foot of Belmont

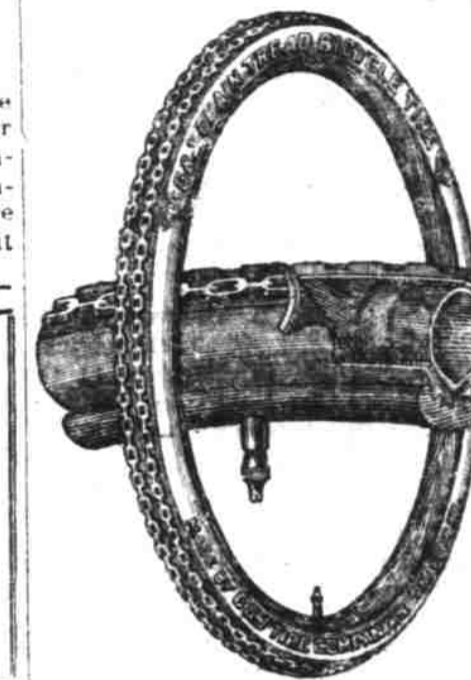
street on the site of the old Salem flour mill. The company is now using 3000 horse power, 700 of which it develops itself, the remainder being furnished by the Portland Light & Power company.

The new water power is harnessed by means of a rope drive turbine which propels an electric dynamo which generates

electric current. The power is carried to the company's plant many blocks away over transmission wires.

"This power has been going to waste for years," said C. F. Beyers, general manager, "and the company decided to utilize it. We believe that fully 1000 horse power can be developed in a similar manner and we are planning to take advantage of it as soon as we can complete arrangements."

The Hickman Beesey Stock company will present for their show at the High theatre starting Tuesday night, "The Shepherd of the Hills," taken from Harold Bell Wright's famous book.



TIRES At Special Prices

Closing out discontinued lines United States Chain Tread single tube—tread like cut—at \$2.00 each. Also several other odd tires and sizes \$1.50 to \$2.00.

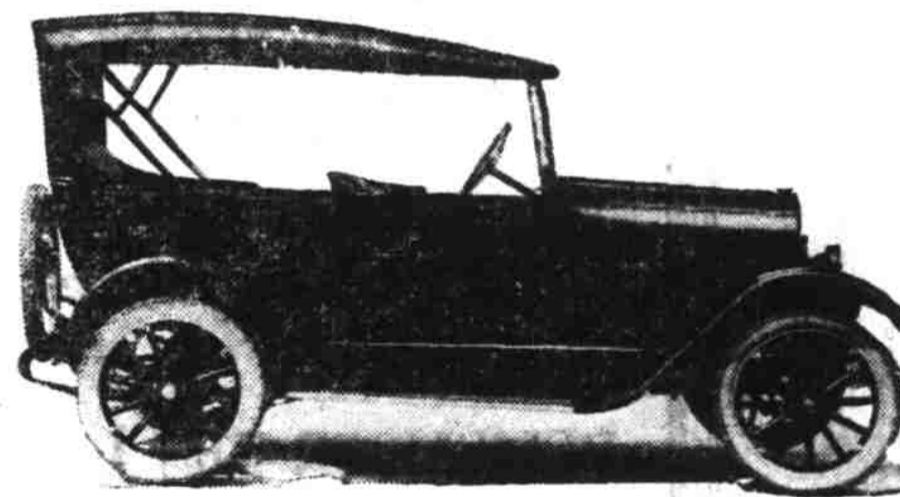
SEE THEM IN THE WINDOW

Lloyd E. Ramsden

387 Court Street

COMING SOON THE STAR

Made by Durant
The Man Who Founded Buick, Chevrolet, General Motors



Star Touring \$558.75 Salem

Star Sedan \$827.48 Salem

Star Coupe \$759.88 Salem

Star Delivery \$625.60 Salem

THE STAR

- Motor—Continental Red Seal
- Bearings and Axles—Timken
- Steering Gear—Warner.
- Gear Shift Standard.
- Gas Tank—In rear—11½ gallons
- Oiling System—Force Feed.
- Water Pump and Stewart Vacuum Feed

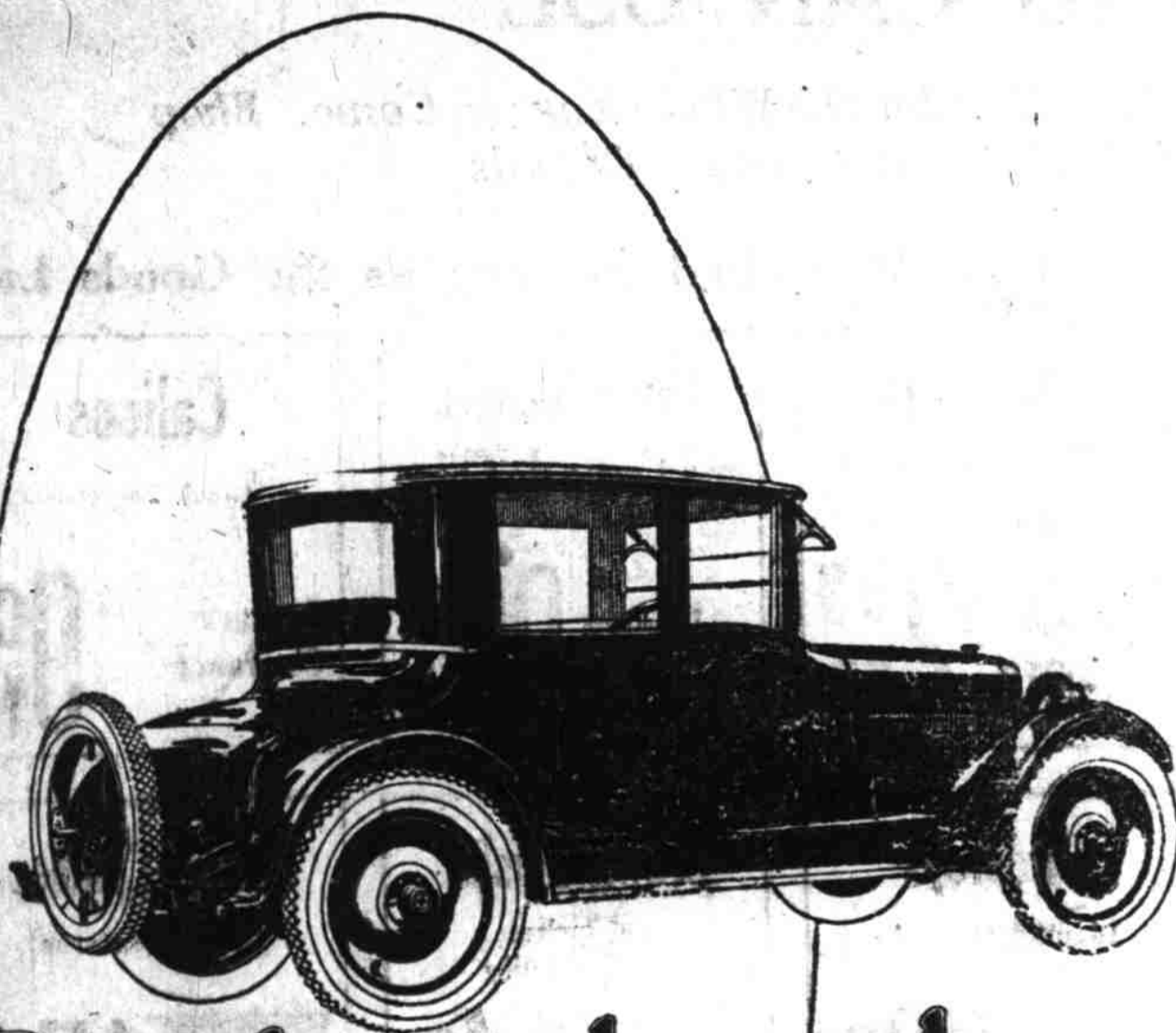
NOTE--All Prices Are Salem Delivery.

MARION AUTOMOBILE COMPANY

235 S. Commercial Street

Open Day and Night

Phone 362



Rickenbacker

A CAR WORTHY OF ITS NAME

While the Rickenbacker Six has many distinguishing characteristics, without question its chief charm is its unvarying fitness as a mechanical unit of super excellence. Fashioned, fabricated and finished by and with the pick of the industry's finest materials and men, this great car, though still in its first month, has already taken its rightful place among the quality cars of America.

5-Passenger Touring Phaeton \$1485
Coupe \$1285; Sedan \$1085
J. A. Bewley Co.

219 N. Commercial St.
Salem, Or. Phone 28