

## AUTOMOBILES, TRUCKS AND TRACTORS

### MOTORCYCLES — BICYCLES — ACCESSORIES

#### CLOSED CARS ARE POPULAR

World Record for Production is Announced by Maxwell Company

DETROIT Mich., Nov. 18.—Maxwell Motor corporation's closed-car production, which has shown steady gains throughout the year, has now reached a point higher than ever before in the history of the company, and the unusually large buying demand is forcing the Maxwell factories to work day and night. There are also substantial indications that even the present high mark may be exceeded within the next few months.

#### Strong Position Held

For the past year Maxwell closed models have held an exceptionally strong position in a market ruled by intense competition. Several times it was found necessary to increase production materially in the company's large body plants in Dayton, Ohio. And recently additions were made in the Dayton properties which permitted the Maxwell organization to shoot at a manufacturing schedule that would more closely conform to the steady and insistent buying demand. The present high closed car output is the direct result of the greatly expanded resources for fine close car manufacture, it is pointed out by Arthur E. Barker, vice-president of the company, but even with this tremendous schedule it has been found necessary to make further increases, and in the past week the Maxwell factories have been in operation nights as well as days. There is every evidence that this condition will continue.

#### Plans Are Ambitious

"Our increased facilities for building closed cars have made possible the attainment of what is believed to be the highest proportionate closed car production ever recorded for a car of or above the Maxwell price," said Mr. Barker. "And our plans for the next few months call for even more remarkable closed car manufacturing developments in our factories."

"The Maxwell club coupe, a two-passenger enclosed vehicle that has found instant favor in the less than \$1000 class, is being turned out in increasing quantities each day. As soon as we are able to realize our production requirements in this model, I feel certain that our closed cars will represent an even greater proportion of our total schedule."

Public Response Great  
"The public response to this vehicle has been so wonderful that we are already warning dealers and motor car users to place orders well in advance."

It was also stated that all club coupes that could possibly be built in the first two months of its manufacture were sold in less than one week after the car was announced.

Read the Classified Ads.

#### GREAT STEAMSHIPS

Many who have traveled on the great trans-Atlantic steamships will appreciate certain comparisons which an enterprising observer has figured out regarding their enormous size. For example, the space inside the Majestic, the largest of these vessels, is the equivalent of 400 detached suburban residences of eight rooms apiece, while her single tonnage more than equals the combined tonnage of the entire fleet of the Spanish Armada, which was itself more than double the combined tonnage of the British fleet which sailed against that invincible array. Will the time ever come when vessels of the size of the Majestic will be considered almost insignificant, as are today the mighty galleons of Queen Elizabeth's time?—Christian Science Monitor.

#### Klan Takes Credit for Defeating Mr. Olcott

The Ku Klux Klan, through L. I. Powell of Portland, king kleeagle of the Oregon domain of the invincible empire, takes full credit for defeating Governor Olcott and electing Walter M. Pierce on November 7. "Your condemnation of a truly 100 per cent American organization, composed of many thousands of Oregon's best citizens in every walk of life is the direct result of your sad defeat politically," says a letter Powell writes to the governor, gloating over the defeat of the latter.

"As a York and Scottish Rite Mason the writer sincerely hopes that you will seriously endeavor in the future not to condemn without first carefully investigating."

Senator Stanley is campaigning through the middle west and one of his favorite expressions is that "a growing wave of socialization is infesting all the governments of the world." It must be some sight for a "wave" to "infest" anything, Watson, call Mrs. Malaprop. But O. Owsley Stanley is from Kentucky, and there are not so many red schoolhouses on the hills.

#### RELIANCE AUTO PAINTING CO.

219 State St.

Cor. Front St. Phone 937

#### GRUNERT AUTO TOPS

256 State St.

#### OAKLANDS ARE SENT EASTWARD

New York Branch Gets Several Carloads to Satisfy Growing Demand

To satisfy the demand for the 1923 Oakland Sedan and five-passenger coupe in the New York territory, the Oakland Motor Car company of Pontiac, Mich., shipped several carloads of their models by express this week to the New York branch for distribution to consumers and Oakland dealers.

It is seldom that any automobile company sends automobiles by express, and it's the first time in two years that the Oakland company has sent cars this way. Their models are being shipped to New York by express because the first orders were received from the New York territory where the cars were shown for the first time at the New York Closed Car show.

The first two models built were shown at the New York show, Sept. 23 to 28; at the Montreal show Oct. 1-7; Pittsburgh, Oct. 14-21, and Washington, 21-28, being shipped from city to city by express.

W. R. Tracy, assistant sales manager, states that the new closed models are now in full production and will be shipped on regular schedule starting next week. Both these models of the 1923 Oakland line are entirely new and have Fisher-built bodies.

The "wets" in this country will probably overlook the statement that when the people of Cuba wanted a peaceful election they suppressed the use and sale of intoxicants. What a blow that was to "personal liberty"—Ex-

#### Prince of Wales Brings Cabaret Back to London

London, Nov. 18.—The popularity of the cabaret and the evening dances in London's fashionable West End restaurants is returning, and the reason therefore seems to be in no small measure due to the Prince of Wales and his brothers.

Immediately after his return from the Far East, the Prince appeared at several well known restaurants for the late supper and dance, accompanied generally by the Duke of York or Prince Henry and a party of friends. Also since the return of the Prince from Scotland he has been seen at several of these dances, and so have his two brothers.

The Royal visitors applaud heartily the entertainment and music, but only occasionally take part in the dancing. The mere fact that they are present, however, is enough for the West End, and the places are crowded nightly in the hopes that some member of the royal family will be present.

#### BIG CHIEF IS LATEST MODEL

Indian Motorcycle Company Announces New Machine For 1923 Trade

The Hendee Manufacturing company announces a new super-powered model, the Indian Big Chief, of 74 cubic inches piston displacement. The original Indian Chief of 61 cubic inches brought out in 1921 made a decided hit with the motorcycle trade both in the domestic and export field, but there seemed to be a demand for a machine for side car use with greater power and speed, but embodying the same engineering principles of the original Chief, and this new model, a heavy duty plugger, is the result.

The Big Chief 74 has been undergoing development for a year and over 50 of these machines

have been plugging good, bad and indifferent roads in all sections of the country since early summer. These were factory production machines, regular stock models and not specially constructed experimental models. The company is greatly pleased at the uniformly good reports from dealers and riders which are coming in every day on the splendid performances of this new addition to the Indian family. The Indian Big Chief sells for \$345. f. o. b.

#### JOYFUL BELIGION

The men of the M. E. church congregation will hold a frolic next Saturday afternoon at the church for the purpose of putting the graveyard in order. All are invited. — Hackettstown, N. J.) Gazette.

#### Judge Campbell Assigned to Try Case at Moro

Judge J. U. Campbell of the circuit court for Clackamas county has been assigned by Chief Justice George H. Burnett of the supreme court to conduct the trial of the case of the state against Walter Givens at Moro, Sherman county. Givens was indicted on a charge of embezzling over \$12,000 and affidavits of prejudice were filed by his attorneys against Judge David Parker of the circuit court at Moro.

zling over \$12,000 and affidavits of prejudice were filed by his attorneys against Judge David Parker of the circuit court at Moro.

**RIMS**  
and Rim Parts for all Cars  
Free Expert Advice  
IRA JORGENSEN  
150 South High Street

#### OILS — GREASES

Tires at prices that are right.  
Alomite Greasing and Oiling Service.

We give your car our personal attention.

**TOMPKINS & HEINE**

219 N. Coml.

Phone 28

## DODGE BROTHERS SEDAN

Many who could well afford more expensive cars are showing a marked preference for Dodge Brothers Sedan.

They find it easy to drive, economical to run, and comparable in beauty and elegance with cars much higher in price.

In the vast amplitude of Dodge Brothers closed body plant, this sedan is constructed with all the studious precision that marks the work of the finest custom builders.

Eighteen days are devoted alone to the 18 rubbing and varnishing operations which are responsible for the unusual brilliancy of its lustre.

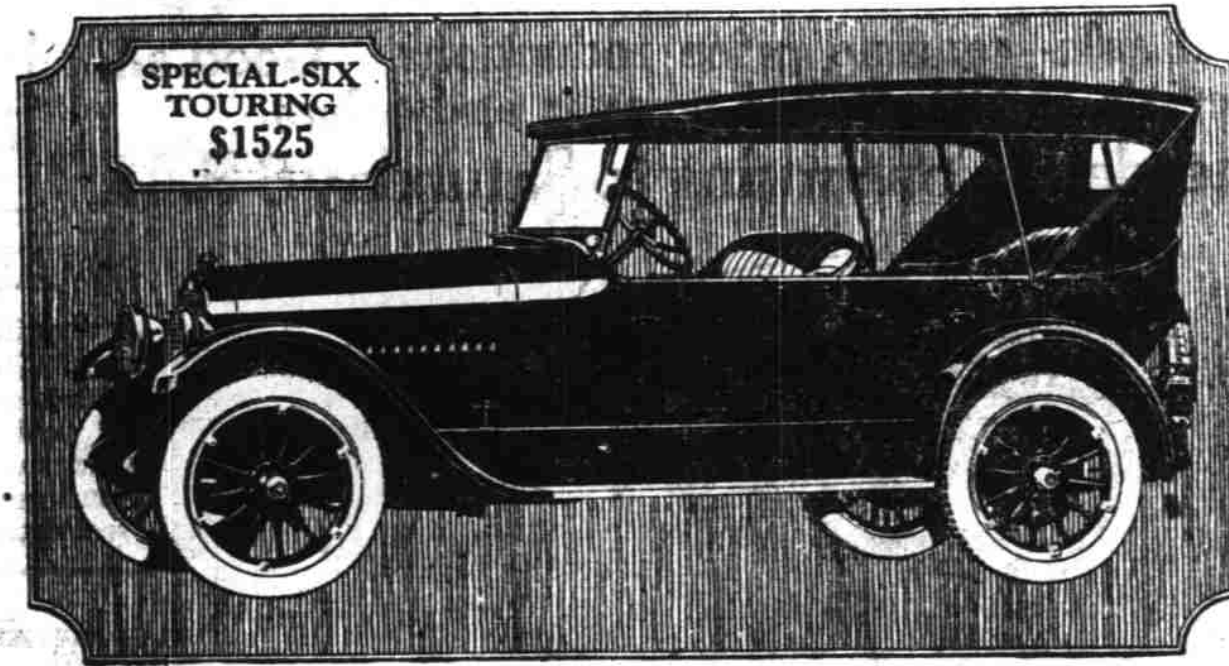
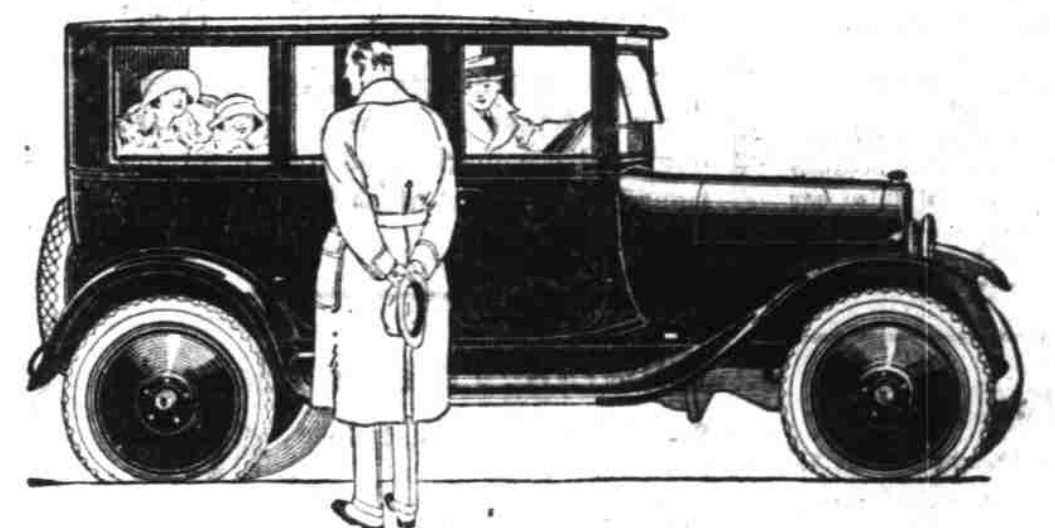
Months of seasoning precede the use of the fine, critically selected ash which gives the body its rugged firmness.

The interior fittings, too, are chosen with thoughtfulness and rare good taste. The upholstery is covered with genuine mohair velvet of a singularly rich and beautiful pattern. The seats are roomy and luxurious.

Steel disc wheels (with cord tires) harmonize in a most effective way with the new grace and smartness which Dodge Brothers have recently brought to the lines of the body.

The price is \$1655 delivered

**Bonesteel Motor Co.**  
184 S. COMMERCIAL



SPECIAL SIX TOURING  
\$1525

*Studebaker*

At its new low price of \$1275 the Studebaker Special Six Touring Car maintains Studebaker ideals of quality and performance, with added features that make it even a greater value than before.

It is known for its striking beauty just as it is for its thorough dependability. Luxurious comfort is assured by the nine-inch seat cushions of genuine leather and the long semi-elliptic springs, front and rear.

Power, flexibility and ease of handling are combined to make the Special Six the most highly regarded five-passenger car on the market.

By manufacturing complete motors, transmissions, bodies, tops, castings, forgings and stampings, middlemen's profits on such items are eliminated and one profit only is included in Studebaker prices. Highest standards of workmanship are maintained and materials are the finest the market affords.

In the Special Six Touring Car you will find such value and satisfaction as only Studebaker can offer.

The name Studebaker is your assurance of satisfaction.

MODELS AND PRICES—f. o. b. Salem		
LIGHT-SIX 5-Pass., 117" W. B. 40 H. P.	SPECIAL-SIX 5-Pass., 119" W. B. 50 H. P.	BIG-SIX 7-Pass., 126" W. B. 60 H. P.
Touring ..... \$1190	Touring ..... \$1525	Touring ..... \$2040
Roadster ..... 1190	Roadster ..... 1495	Speedster ..... 2130
Coupe Roadster ..... 1450	Coupe (4-Pass.) ..... 1525	Coupe (4-Pass.) ..... 2780
Sedan ..... 1795	Coupe (4-Pass.) ..... 2195	Sedan (5-Pass.) ..... 2850
	Sedan ..... 2375	Sedan (6-Pass.) ..... 3155

Non-Skid Cord Tires, Front and Rear, Standard Equipment

## MARION AUTOMOBILE CO.

235 S. Commercial St.

Open Day and Night

THIS IS A STUDEBAKER YEAR

## Ford Prices Greatly Reduced

NOW LOWEST IN HISTORY

Read the Salem Prices—Then Act

Chassis Complete .....	\$420.32	Touring Comp. ....	\$492.72
Roadster Complete .....	\$462.56	Coupe, comp. ....	\$635.20
Truck Chassis, comp. ....	\$471.52	Sedan, comp. ....	\$702.80
Tractor .....	\$484.60		

Each Model With All the Latest Improvements

### Special

FOR A SHORT TIME ONLY

## MASON CORD TIRES

30x3 1/2 Maxi Mile Cord .....	\$11.80
30x3 1/2 Heavy Duty Cord .....	\$13.95
32x4 Cord .....	\$24.50
33x4 Cord .....	\$24.70
34x4 .....	\$25.35
32x4 1/2 .....	\$30.75
33x4 1/2 .....	\$31.55
34x4 1/2 .....	\$32.40

These tires are fully guaranteed by factory with our personal service back of them.

As tire prices are on the incline it would be wise to take care of your Tire Needs now.

Vulcanizing and Retreading

## Federal Tire Service

Phone 471

197 South Commercial Street

Katty corner from Marion Hotel