

## AUTOMOBILES, TRUCKS AND TRACTORS

### MOTORCYCLES — BICYCLES — ACCESSORIES

#### BONESTEEL PARTY BACK FROM TRIP

Crater Lake National Park and Oregon Caves Visited on Motor Tour

Russell and Wallace Bonesteel, with a party of friends, have just returned from a trip to Crater Lake and the Oregon caves in Josephine county.

Going south from Salem, the road is paved to Albany; then it is macadamized to Corvallis, and paved from there to Eugene. At Oakland there is a 13-mile detour, around some new road construction. This is a very rough and tempestuous 13 miles. Beyond this, most of the road through Roseburg and Grants Pass is paved. There is one little detour at Grants Pass, Central Point, where the Crater Lake road leads off eastward from the main highway, is 253 miles from Salem; from there to Crater Lake is 88 miles.

#### RIMS

and Rim Parts for all Cars  
Free Expert Advice  
IRA JOHNSON  
150 South High Street

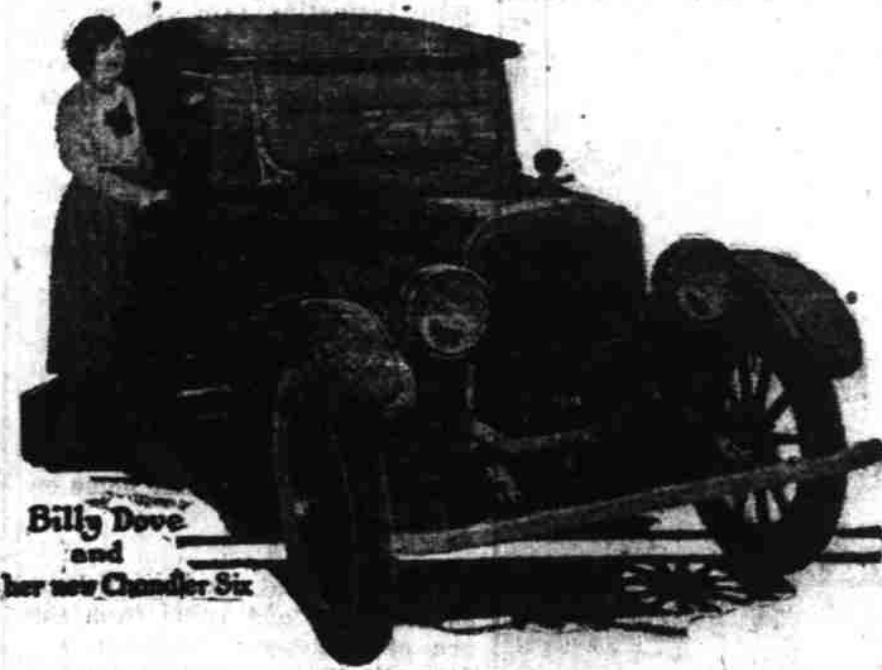
with the road in fair condition. Some parts of this lake road are now under construction, and short detours may be necessary during working hours. There are good camp grounds at Union and Butte Creeks.

They describe the 40-mile road around the rim of the lake, and about 2,000 feet above it, as one of surpassing grandeur. The lake itself is one of the wonders of the world. Good fishing can be had in the lake. It is a fact not known to everybody, perhaps, and that because it is a national reservation and so not subject to ordinary game laws. The angler may fish there without a license.

It is 22 miles from the lake to Fort Klamath, over a good road. There is one side trip, to the Garden of the Gods on Canyon creek, where the observer looks across the precipitous canyon, seemingly thousands of feet deep, to the curiously chiseled and sculptured pinnacles of rock that make the everlasting, granite "Garden". At Fort Klamath, the travelers found vast herds of cattle, in numbers never seen or dreamed of in this part of the Willamette valley.

There is a 40 mile drive along the shores of Klamath lake, that is described as a splendid boulevard—and there isn't a speed cop within radio distance. The White Pelican hotel at Klamath Falls was one of the greatest marvels of the journey, they say. To find such a hostelry so far inland, as-furnished them almost as greatly as the Crater Lake itself.

#### BILLY DOVE AND HER NEW CHANDLER SIX



Billy Dove and her new Chandler Six

"A stiff, fast ride in my New Chandler Six wipes out that tired feeling after a hard day at the studio," says Billie Dove, the nineteen-year-old movie star, who recently joined the Hollywood colony.

Every day as soon as her work at the studio is finished, Billie jumps into her Chandler and speeds to shore or mountain.

From Klamath Falls to Keno there is 13 miles of good roads; and then the next 52 miles to Ashland should be driven by a deaf-and-dumb man—any one else

they say, is bound to say things he will regret. There is a 50-mile drive over fairly good roads from Grants Pass to Oregon caves, a trip that they found wonderfully profitable to take. The caves rank with the most wonderful limestone caves in Kentucky and in Missouri. A tour takes three hours of steady travel underground. The travelers made the trip without so much as a puncture.

#### SCHOOL MONEYS ARE APPORTIONED

Distribution to Counties of State Made by Secretary of State

The per capita apportionment of school moneys among the 36 Oregon counties for 1922, made yesterday by Secretary of State Koser, is 11 cents greater per child than a year ago, or \$1.85 this year and \$1.74 last year. This is considered a remarkable showing for the reason that the school census shows 6868 more persons of school age in the state this year than last year.

The total amount apportioned yesterday is \$422,088.60 for 228,156 persons of school age. Last year the amount was \$384,985.60 for 221,268 persons of school age.

This year's apportionment by counties follows:

County	Children	Amount
Baker	5,454	\$ 10,089.90
Benton	4,546	8,410.10
Clackamas	12,678	23,454.30
Clatsop	7,036	13,016.60
Columbia	4,683	8,663.55
Cook	7,324	13,549.40
Crook	1,061	1,962.85
Curry	909	1,681.65
Deschutes	2,792	5,165.20
Douglas	6,285	11,627.25
Gilliam	1,269	2,347.65
Grant	1,662	3,074.70
Harney	1,085	2,007.25
Hood River	2,978	5,509.30
Jackson	7,024	12,994.40
Jefferson	875	1,618.75
Josephine	2,716	5,246.60
Klamath	3,411	6,310.35
Lake	1,288	2,382.80
Lane	11,447	21,176.95
Lincoln	2,090	3,866.50
Linn	8,134	15,047.90
Malheur	3,523	6,517.55
Marion	14,462	26,754.70
Morrow	1,791	3,183.85
Multnomah	66,092	122,270.20
Polk	5,044	9,331.40
Sherman	1,089	2,014.65
Tillamook	2,793	5,167.05
Umatilla	7,545	13,958.25
Union	5,232	9,679.20
Wallowa	3,038	5,620.30
Wasco	4,189	7,749.65
Washington	9,040	16,724.00
Wheeler	980	1,813.00
Yamhill	6,661	12,322.85
Total	228,156	\$422,088.60

#### Two Cherry Trees Yield Money to J. E. Phillips

J. E. Phillips of Spring Valley, near Zena, in Polk county, seems to be the prize-winner in cherries this year. If not for a large orchard, at least for orchards of his size.

From his two Black Republican trees he harvested and sold to the Drager Fruit company \$113.50

#### DECISION IS AID TO PORTS

Interstate Commerce Commission Decision Consolidates Terminals

The ports of the Pacific do not and never have had such consolidated operation as is possible under a recent decision of the interstate commerce commission whereby absolutely common use of terminal facilities is accorded all railroads entering any port, if carried to its logical conclusion whenever the commission may so direct.

This is the interpretation placed upon the decision by Hal F. Wiggins, traffic expert of the Oregon commission, upon receipt of a copy of the decision yesterday.

**Portland To Benefit**  
In Portland, for example, the decision could have the effect of making possible, whenever the commission may so order, a complete free use of all trackage of the Portland terminals by four transcontinental roads, the Great Northern, the Northern Pacific, the Oregon - Washington Rail-

worth of cherries. They were good-sized trees, and it took some work to pick 'em—but he has the checks to show that he got the money.

It might not be impossible to beat that record. Fifteen bushels of cherries is a lot, however, even for most good trees.

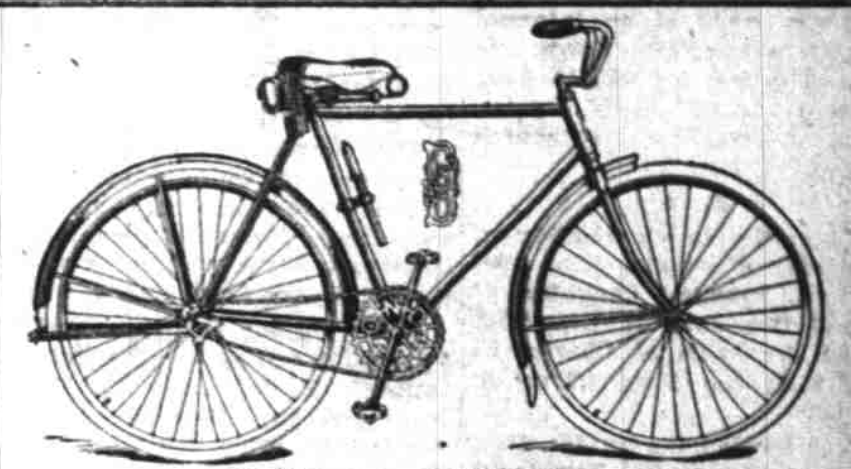
The black cherries have not brought quite the price of the Royal Annes, but they have brought enough to make real money.

road & Navigation company and the Southern Pacific, and also of the shorter lines entering that city. It may offer a solution to the terminal troubles that have harassed the port of Portland and dock commission officials and the shipping interests on the East Side and other sections. At present Portland has a very limited common user arrangement of terminals, under which the Southern Pacific, the O-W-R & N and the Northern Pacific are only partially affected.

**Decision Far-reaching**  
"The most interesting and far-reaching decision that has ever come out of the transportation act of the interstate commerce commission, for the reason that 'consolidation' is the biggest word in the railroad world today," is the way Mr. Wiggins describes the decision.

The case from which the decision emanated was that the Hast-

ings, Minn., Commercial club vs. The Chicago, Milwaukee & St. Paul Railway company. Georges Carpentier will become a movie actor. He ought to be a knock-out.



"IT'S A DAYTON"  
LLOYD E. RAMSDEN  
387 Court Street—Phone 1687

#### Announcing a Slight Reduction IN FORD CARS, TRUCKS AND TRACTORS

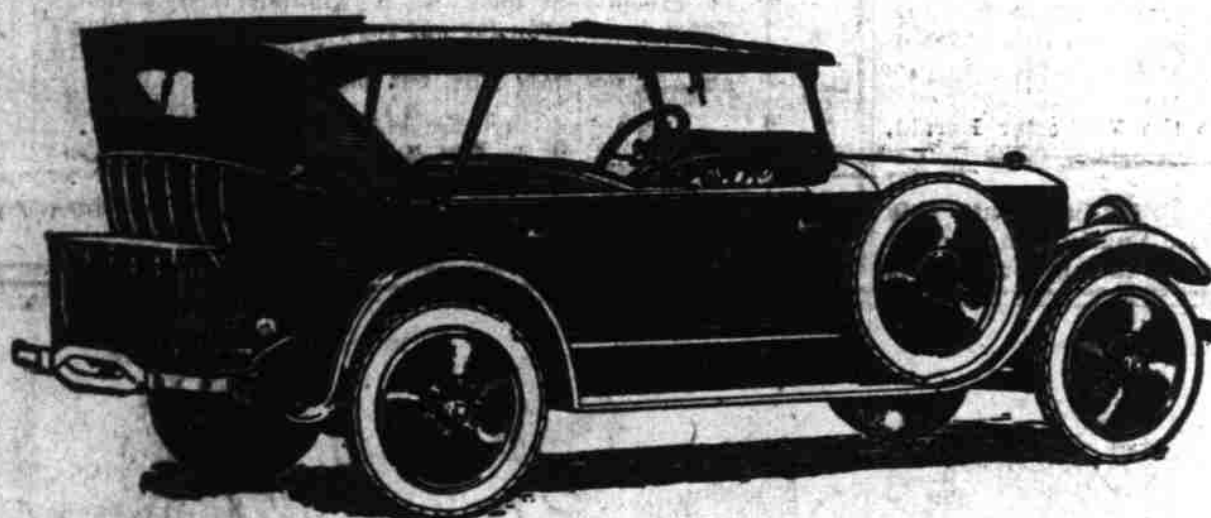
Chassis	\$471.52	Sedan	\$754.80
Roadster	514.56	Coupe	687.20
Touring		544.72	
All Equipped with Starter and Demountable Rims			
Truck	522.72	Tractor	484.60

At Your Home

More Value—Less Money

Phone 1995 VALLEY MOTOR CO. 260 North High

#### THIS IS A STUDEBAKER YEAR



### STUDEBAKER

Announces

## NEW PRICES

On All Models

Owing to reduction of freight rates and the policy of The Studebaker Corporation to produce the Best Automobiles on the Market at reasonable prices, we are enabled to quote the following prices effective August 1, 1922.

Light Six Touring, 5 passenger	\$1190.00
Light Six, 2 passenger Roadster	\$1190.00
Light Six Coupe	\$1450.00
Light Six Sedan	\$1795.00
Special Six Touring, 5 passenger	\$1525.00
Special Six Club Roadster	\$1525.00
Special Six 2 Passenger Roadster	\$1495.00
Special Six Coupe	\$2195.00
Special Six Sedan	\$2375.00
Big Six Touring, 7 passenger	\$1935.00
Big Six Speedster	\$2075.00
Big Six Coupe	\$2650.00
Big Six Sedan	\$2850.00

All prices F. O. B. Salem, Oregon

These are quality Automobiles of highest standard

We are proud to call your attention to OUR LIGHT SIX

## Marion Automobile Co.

Open Day and Night Salem, Oregon Phone 362

## VICK BROTHERS

### MID SUMMER PRICE ADJUSTMENT

NEW PRICES ON CARS

NEW PRICES ON TIRES

Lower prices all along the line

Come in and see our new models at reduced prices

The New Businessman's Coupe on our floor is one of the latest attractions

Call in for demonstration and further information

## VICK BROTHERS

The House of Quality Cars

High and Trade Streets

Salem, Oregon