

AUTOMOBILES, TRUCKS AND TRACTORS

MOTORCYCLES — BICYCLES — ACCESSORIES

Tire Wear Depends On Wheel Alignment

Proper alignment of wheels is vitally essential to maximum wear in tires, according to Federal Tire Service, the local Federal Tire dealers.

"In speaking of some of the ways in which the motorist unconsciously subjects tires to unnecessary strains and wear," says Mr. Zosel, the manager, "the proper alignment of the wheels plays a most important part in obtaining greater tire mileage." In explaining this he said, "Most cases of rapid tire wear on the front tires can be traced to

misalignment of the wheels. They should run parallel. On nearly all cars the front wheels are set to 'toe in' slightly, usually about a quarter of an inch. They run parallel, however, when in use owing to the road resistance having a tendency to spread the parts a trifle.

"When the wheels 'toe-in' too much, the tires are subjected to a shearing wear which literally grinds down the tread. Sometimes only one wheel is out of line. Then all the wear comes on that tire. It is just as bad for the tires when the wheels 'toe out.' To properly guard against this misalignment, watch the front wheels and see that there are no

loose bearings or bent steering knuckles or rods. These are responsible for much unnecessary trouble.

NEW CORPORATIONS

Articles of incorporation were filed Saturday by the Myers-Blackwell company of Portland, capitalized at \$10,000. The incorporators are Francis P. Myers, Harlie A. Blackwell and Arthur Langguth.

Notification of an increase in capitalization from \$5000 to \$9000 was filed by Crantford's Inc., of Portland.

BROCCOLI GOING STRONGER IN 1922

There Will Be Over 1000 Acres Planted by Growers of Salem District

The Salem Independent Broccoli association met at the Salem Commercial club rooms last Saturday for the election of officers and other business.

C. C. Russell was elected president; J. W. Savage, vice president; Mrs. U. J. Lehman, secretary. Board of directors: Frank Hines, Gervais, route 1; Fred Limbeck, Macleay, M. C. Petys, West Salem; C. C. Russell and J. W. Savage.

Then the seed situation was taken up and discussed thoroughly. Mr. Russell was strong for foreign seed, and the meeting authorized him to procure seed from England, known as the Johnson strain of St. Valentine. Seed of this strain is in sight to plant 120 acres, besides some seed Mr. Russell has of his own raising. Over 100 acres have been signed up, and there will be a lot more coming every day. The books will be open as long as seed may be had. Mr. Russell says that if you have good broccoli ground it will pay you to look into this matter.

There have been no full cars of broccoli shipped from the Salem district, but the Willamette Valley Transfer company carries broccoli to Portland every trip. Glafke & Co. are handling the crop. They have taken about 2000 crates, and

there has been a considerable local sale.

Pratum and Macleay have furnished the larger part per acre, theirs not being frost killed so badly. Mr. Limbeck of Macleay has harvested 250 crates from less than two acres.

Every planter, or at least 95 per cent of them, will increase his acreage largely this year.

With the 700 acres to be planted by members of the Oregon Growers Cooperative association, the Salem district is going to put out at least 1000 acres of broccoli the coming season—which will mean, with good weather conditions throughout the coming winter, well up towards a half million dollar crop next spring.

CIRCUIT COURT OPENS MONDAY

Four Polk County Women Accept Jury Service — Docket is Short One

DALLAS, Or., April 28.—(Special to The Statesman.)—The spring term of the Polk county circuit court which was to have convened the first Monday in April but which was postponed one month, meets in Dallas next Monday. The docket at this term promises to be one of the shortest of recent years and it is expected that it will take but a few days to clean up the cases.

The first case to be heard is that of C. W. Irvine, trustee, vs. Bert Hilde, action for money. The case comes up for hearing at 9:30 Monday morning. The retrial of the suit of Pugh & Sauer against the city of Dallas for an alleged balance due on a sidewalk contract made in 1920, is scheduled for Monday afternoon at 1:30 o'clock.

A new grand jury will be chosen Monday morning and will immediately get to work on at least three criminal cases. If indictments are returned it may force court to continue for at least two more days.

At this term of court the first women to serve on juries will be called. A total of nine women were summoned to appear but out of this number but four have accepted jury service. They are Mrs. B. I. Ferguson of Eola; Mrs. Howard Coleman, Mrs. Fred J. Holman and Miss Julia Nunn, all of this city.

Remodeled Pratum Church Dedicated Last Sunday

PRATUM, Ore., April 29.—The Pratum Methodist church which has during the winter undergone considerable changes, was dedicated last Sunday. Besides Bishop Shepherd from Portland, District Superintendent Rev. E. E. Gilbert and Rev. E. B. Hertzler from Portland, and Rev. John McNeese, the local pastor and other pastors

FEDERAL Double Cable Base Tires



Motor Time Means Federal Time

Experienced motorists have a habit of thinking "Federal" whenever motoring season comes round. The swarms of people who are now buying Federal Tires because of their serviceability convinces us that automobile time is here. Are you in the running? You will find the Federal Tire adapted to every need.

Federal Tire Service

Katty-Korner Marion Hotel

took part in the exercises. Rev. John McNeese has rented the Denney home where Mr. D. Morgan lived last year. He will take possession the first of the week.

The Loyal Workers Bible class will hold their monthly business meeting and class social for the first time in the basement of the church this evening.

Rev. Mr. Kliever, a missionary of the Mennonite church, gave a

very interesting lecture on the American Indian on Wednesday night; on the Holy Land yesterday forenoon and on India last evening. He will conclude his series of lectures on Sunday night when he will speak on China. Mr. Kliever knows from experience what he is talking about and draws a large attendance.

The latest editions of popular dictionaries have added thou-

sands of words to the English language, but we have seen nothing to describe the exclamation of the average man when he pays his income tax.—Exchange.

RIMS

and Rim Parts for all Cars
Free Expert Advice
IRA JORGENSEN
150 South High Street



The Reliable Buick Transmission Is a Feature of the Buick "Four"

The same quietly operating, dependable transmission that has been so pronounced a feature of the Buick Six, is employed in the Buick Four. The design is the same—the quality is the same—Only in size is there any difference.

Every part of the remarkable line of Buick four-cylinder cars is as distinctly Buick as if the name were stamped upon it.

And back of every Buick car is the skill and experience of 20 years, combined with unparalleled manufacturing equipment facilities.

OTTO J. WILSON
CENTER and COMMERCIAL STREETS
Phone 220—Salem, Oregon

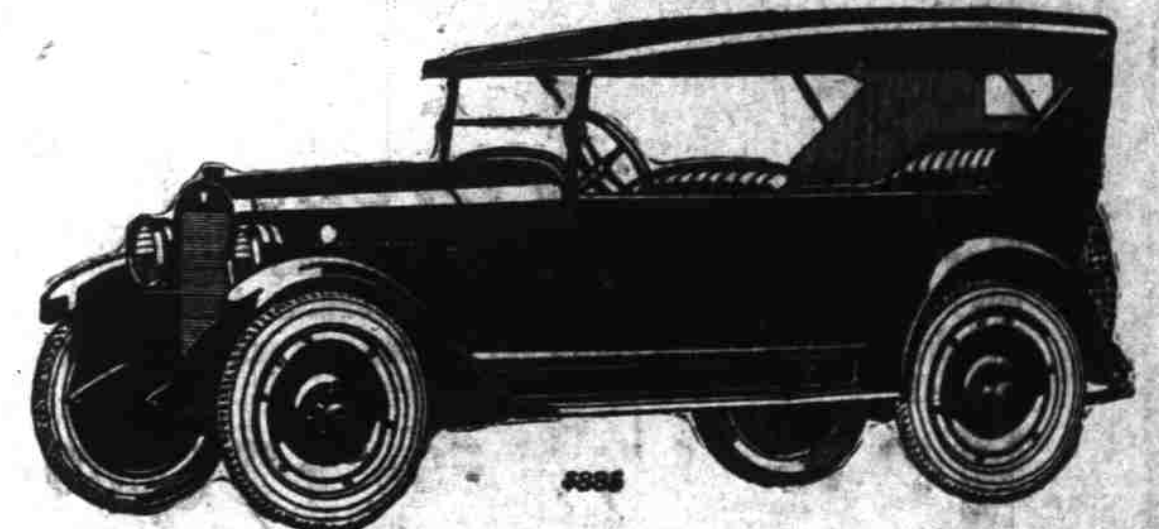
WHEN BETTER AUTOMOBILES ARE BUILT, BUICK WILL BUILD THEM



THE friendly regard in which the good Maxwell is held by its owners is a distinct tribute to the reliable, economical way in which it serves the average family.

Cord tires, non-skid front and rear; disc steel wheels, demountable at rim and at hub drum type lamps; Alomite lubrication; motor driven electric horn; unusually long springs; deep, wide, roomy seats; cool leather upholstery in open cars, broadcloth in closed cars; open car side curtains open with doors; clutch and brake action, steering and gear shifting, remarkably easy; new type water-tight windshield. Prices F. O. B. Detroit, revenue tax to be added: Touring Car, \$885; Roadster, \$885; Coupe, \$1285; Sedan, \$1485

GINGRICH MOTOR & TIRE CO.
371 Court St. Phone 635



The Good

MAXWELL

AUTO TOPS

Our prices are probably not the lowest but the quality of work we do is of the highest. Low prices generally mean poor work. Our aim and purpose is to perform the best work possible at prices within reason. Give us a trial.

Our Experience Means Your Satisfaction

Walter E. Grunert
AUTO TRIMMER

256 State Street Opposite U. S. Bank Building Phone 793

Studebaker

A name that has been before the Public for over seventy years.

Studebaker Automobiles are cars of quality and stability giving service to the owner that can be unquestioned.

In offering these automobiles in this territory we also offer service and a parts depot that but few dealers have to offer.

A demonstration in the Studebaker Automobile will please you.

Prices Are Back to Pre-War Times

Light Six Touring \$1275

Special Six Touring . . . \$1745

Big Six Seven Passenger \$2095

F. O. B. Salem

We are at your service

Marion Automobile Co.

Open day and night

Salem, Oregon

Phone 362