

AUTOMOBILES, TRUCKS AND TRACTORS

MOTORCYCLES—BICYCLES—ACCESSORIES

MOTOR PERMITS TOTAL SIXTEEN

Public Service Commission Makes Public List of Those Granted

A total of 16 automotive permits have been issued by the public service commission under the transportation act placing the motor vehicle lines under the jurisdiction of the commission, according to a list made yesterday. The

lines to which permits have been issued are as follows:

Robert Butler, Sheridan, operating as Sheridan-McMinnville stage line.

H. A. Denton, Salem, passenger service between Salem and Dallas.

P. G. Anderson and B. Henry, Albany, operating as Albany Corvallis stage line.

York Taxi company, Baker, passenger service Baker and vicinity. Clifford B. George, La Grande, passenger service La Grande and vicinity.

O. H. McPherrin, Athena, passenger service between Weston and Pendleton.

D. J. Dawson, Pendleton, operating as Umatilla Stage line between Pendleton and Umatilla.

Sherman's Transfer company, 471 Duane street, Astoria, freight service Astoria and vicinity.

Rand Truck line, Dayton, freight service between Dayton and Portland.

Howard & Grimes, Klamath Falls, passenger service between Medford and Klamath Falls.

Warren Truck lines, 65 1/2 Second street, Portland, freight service between Portland and Mosier.

D. K. Ford, La Grande, passenger service, La Grande and vicinity.

Ezra Allen, La Grande, passenger service, La Grande and vicinity.

C. A. Bruckman, Albany, passenger service, Albany and vicinity.

Charles W. Lanham, Salem, passenger service, Salem and vicinity.

Fred Henry and Albert Oberon, Independence, freight service, Independence and vicinity.

FRUIT EXPERTS ARE APPOINTED

Committees to Handle Various Products Named by Oregon Growers

At their meeting to discuss the local fruit situation, the Salem district Oregon Growers' Cooperative association directors appointed a full set of committees to handle all the local crop matters for the season.

The committees and their members are:

Loganberries: J. P. Aspinwall, August Lentz, Seymour Jones, S. A. Miller, E. Dougherty.

Prunes and pears: E. E. Towle, W. H. Weeks, F. C. Ewing, Otto Hansen, W. J. Neuens.

Apples and walnuts: J. R. Chapman, E. B. Page, Robert Shinn.

Cherries: J. R. Chapman, J. P. Smart, A. P. Carpenter.

Strawberries and other berries: C. A. Ratcliff, F. R. Robinson, G. A. Miller, Ralph Gilbert.

These committees are charged with the general supervision of the fruits under their particular classification. They will look after the arrangements for delivery, for picking, for getting and handling boxes and facilities,

and in general serve as executive officers for their particular fruits almost as if each were a separate organization. It is believed that this close supervision will greatly improve the production and the delivery of all kinds of fruits.

Prof. C. I. Lewis, assistant general manager of the Oregon Growers, is visiting one Oregon local union daily, to attend their local elections and tell the members something of his market study all over the United States. He was at Dallas Thursday, and will be at Newberg today and at Forest Grove on Saturday. He will be at The Dalles and at Roseburg, within the next week or 10 days.

SHERIDAN NOTES

SHERIDAN, Or., March 23.—The Oregon Growers held an all-day meeting in Sheridan today and was well attended. Several interesting speakers were present and gave talks. Among them was A. I. Lewis, who spoke, largely, on his trip through the east, and market conditions in that part of the country. He also handed in his resignation as assistant general manager of the Oregon Growers, and will become editor of the "American Fruit Grower," a paper published in Chicago.

The Women's Study club will hold its Thursday meeting at the home of Mrs. D. B. Hill on West Main street.

The St. Patrick's entertainment and lunch given at the grade school last Friday was largely attended. The eighth grade room was crowded to listen to the musical program given by the pupils, and later more than 190 people were served in the lunch room on the first floor. The proceeds will be used to help furnish the library.

The Sheridan furniture factory is booming, and orders are coming in faster than they can be filled. A shipment was made to Salem today.

The play given by members of the Artisan lodge last Friday evening was a great success and was largely attended.

G. W. Epley of Sheridan has been appointed by County Assessor Nichols of McMinnville to assess all mercantile stocks in Yamhill county.

Mr. and Mrs. Bob Shibley have moved to Willamina, where they will manage the local telephone exchange.

AUBURN NEWS

Loganberry training was finished in the Sneed & McKinney yard this week.

Miss Mabel Williams is having her apple orchard grubbed out, as it was killed by the heavy freeze of two years ago. Mr. Kade is doing the work.

Mr. and Mrs. W. H. McKinney and son James are home after a week's siege of influenza which they contracted while nursing their son-in-law and daughter, Mr. and Mrs. Charles Clark, of Salem.

Miss Esther Sneed is visiting at the home of her uncle and aunt, Mr. and Mrs. J. L. Sneed of Stayton.

Several persons from Auburn are planning to attend the Hayesville Sunday school convention at Pratum Sunday.

The teachers' training class, which was recently organized with Claud Armstrong as teacher, will hold its first meeting Sunday after the regular Sunday school.

The Woman's Missionary society recently held the last meeting of the conference year at the home of Mrs. W. H. Sneed. The following officers were elected: President, Mrs. Albert Peebles of Salem; vice president, Mrs. Claud Armstrong; secretary treasurer, Mrs. W. H. Sneed; corresponding secretary, Ms. C. A. Bowd. The next meeting will be held the second Wednesday in April at the home of Mrs. S. J. Sutter.

Field and Stream Club Doing Excellent Work

The Mistland Field and Stream club of Salem certainly started things when it set out to put Marion county on the fish and game map of the state.

A letter from the state game warden, A. E. Burghdoff, of Portland, discusses several of the matters brought up by the club. It had asked to have the North Santiam closed for five years, and to have 1,000,000 trout fry a year planted in the stream to put it back into the big fish class of streams. The game warden writes that the department has already declared the South Santiam closed for four years, to allow it a chance to replenish.

More birds are to be sent to Marion county.

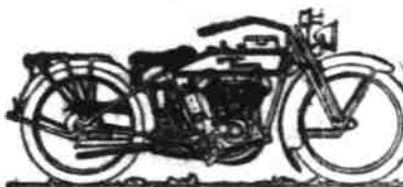
The game warden writes that through an error of figures, Marion county actually received 27,000 instead of 164,000 trout fry, during 1919 and 1920. Even this number, however, is held to be far below a fair proportion considering the license paid and the mileage of streams within the county borders.

Special Fares Announced By the Southern Pacific

"Reduced rates of one and one-half for round trip from all points on Southern Pacific lines in California, Oregon, Arizona, Nevada, New Mexico and Utah to Salt Lake for those who wish to attend the Intermountain Livestock show and the Mormon Spring conference to be held there April 3 to 6 and April 4 to 9 respectively, were announced today by Charles S. Fee, passenger traffic manager for the railroad. Tickets will be on sale from March 29 to April 7 with final return limit April 30.

RIMS

and Rim Parts for all Cars
Free Expert Advice
IRA JORGENSEN
150 South High Street



Now is the time to place your order for a

Rebuilt Motorcycle

We have the largest and most complete stock of Motorcycles in the Willamette Valley, and at prices as low as—

\$45

USE YOUR CREDIT

Machines sold on small payment down and the balance on small monthly payments. Call and see them or write for free list.

HARRY W. SCOTT
"The Cycle Man"

147 So. Com'l St., Salem, Or.

Bicycle Tires Are DOWN

Now is the opportune time to equip your bike with a new set of tires. We can supply you with any make of tire you desire in any size:

Single tube tires, many treads to choose.....\$2 to \$4.75
Clincher Casings.....\$3.25-\$4
Inner Tubes, additional.....\$1 and \$1.25

New Velocipede

Drop in and see our new velocipede with coaster brake, for the kiddies. Also a trailer. Your kid'll go wild about it.

Lloyd E. Ramsden
387 Court Street

Used Cars Wanted

At the present time we are selling so many cars that we find it practically impossible to keep enough cars on display to meet the demand.

If you have a good light car that you are willing to sell at a reasonable price, bring it to us and we will put our display space and salesman at your disposal.

Oleson-Rookstool Auto Exchange

173 S. Liberty St.

Phone 666

A WANT AD. IN THE STATESMAN WILL BRING RESULTS

BUICK

The Four Chassis— Standard Buick All Through

From tire carrier to radiator, the Buick four chassis is of the same powerful construction as the Buick Six.

Buick cars for twenty years have been built for dependability—and the Buick Four embodies standard units which have proved themselves through years of service.

Compare the Buick Four chassis part by part with any other four cylinder car.

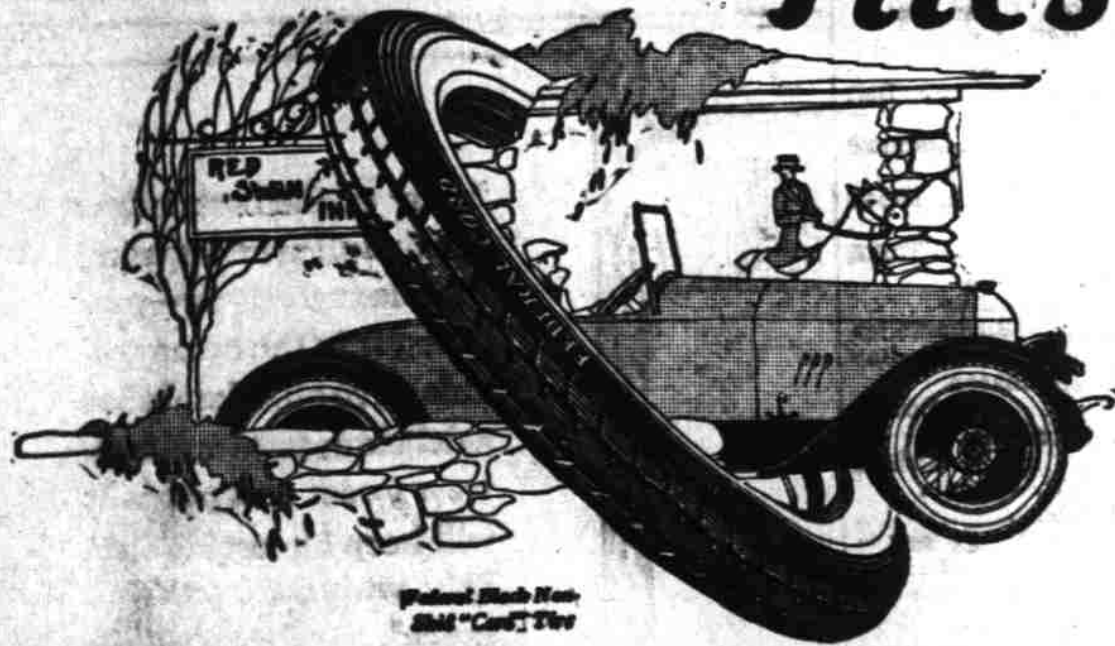
Goodyear Tire Service Station
Oil—Gas—Repairing

OTTO J. WILSON
CENTER and COMMERCIAL STREETS
Phone 220—Salem, Oregon

WHEN BETTER AUTOMOBILES ARE BUILT, BUICK WILL BUILD THEM

FEDERAL

Double Cable Base Tires



Across Our Counter

WHEN you face us across the counter, it isn't altogether what you buy that counts with us. It may be a Federal tire, it may be only a valve cap.

Of equal importance to us is the fact that you have called upon us for service.

We welcome every opportunity to recommend to you goods that we fully believe in and to establish business relationships which will prove profitable to you and to us.

Every man in the Federal organization must live up to the Federal square-dealing policy. Count upon us for "service with a smile in it."

Federal Tire Service
Katie-Korner Marion Hotel

Batteries Wear Out for Two Good Reasons

Every battery has two kinds of wear—the natural slow wear due to use, and the more rapid wear that comes from abuse.

Keep the proper amount of water in your battery by putting in a little every two weeks. Test with the hydrometer to make sure there's enough charge. Come in to Battery Headquarters at the first faint sign of trouble.

Then your battery will wear out slowly and gradually, giving you uninterrupted service at lowest cost per month and per mile.

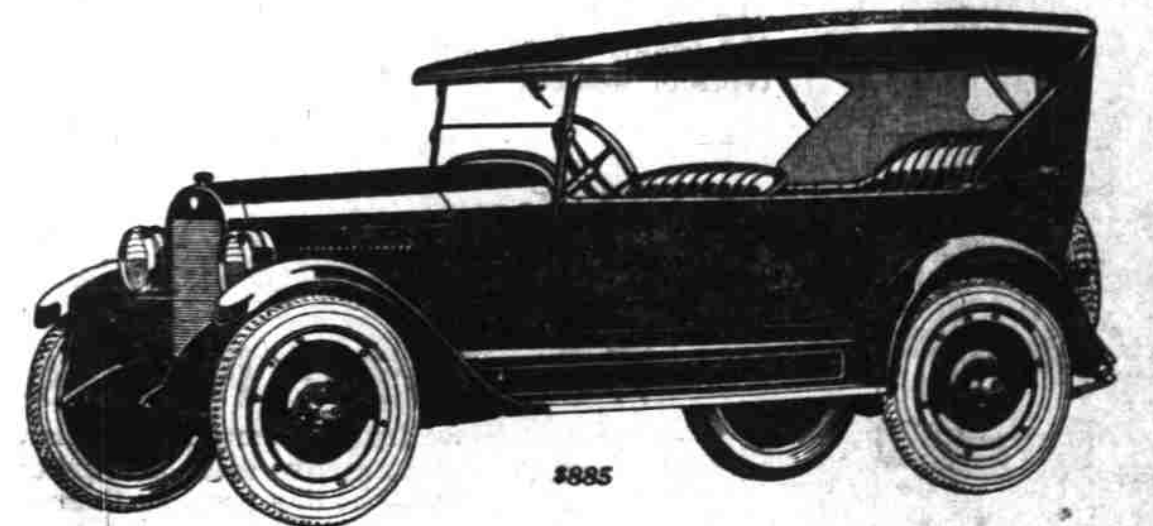
DEGGE & BURRELL
Auto Electricians
238 North High St.
Phone 203

Representing
Willard Storage
Batteries

THE records which the New Series of the good Maxwell is making everywhere, in saving service and in splendid performance, evidence the sound value which the new organization is building into these fine cars.

Touring Car - \$885
Roadster - - 885
Sedan - - - \$1485
Coupe - - - 1385
P. O. B. Detroit, revenue tax to be added

GINGRICH MOTOR & TIRE CO.
371 Court St. Phone 635



The Good

MAXWELL