

More Bargains Every Day At The New Store Worth & Gray DEPARTMENT STORE

177 N. Liberty St. Salem, Or.

Pep and Progress Pages

Dedicated to Stimulating Our Present Industries And to the Establishment of New Ones

The Way to Build Up Your Home Town Is to Patronize Your Home People

The Surest Way to Get More and Larger Industries Is to Support Those You Have

SOUND TIRES SOUND ALL AROUND VICK BROS. Trade and High

WEATHERLY ICE CREAM BUTTERCUP ICE CREAM CO. P. M. Gregory, Mgr. 240 South Commercial Street Salem

This campaign of publicity for community upbuilding has been made possible by the advertisements placed on these pages by our public-spirited business men--men whose untiring efforts have builded our present recognized prosperity and who are ever striving for greater and yet greater progress as the years go by.

Your Health Begins When You Phone 87 for an appointment DR. O. L. SCOTT P. S. C. Chiropractor

DRY GOODS NOTIONS WOMEN'S READY-TO-WEAR FURS CORSETS

THE CAPITAL CITY CO-OPERATIVE CREAMERY IS ONE OF THE NOTABLE SUCCESSES OF THE WHOLE COUNTRY IN ITS FIELD OF OPERATIONS. IT HOLDS ITS GAINS

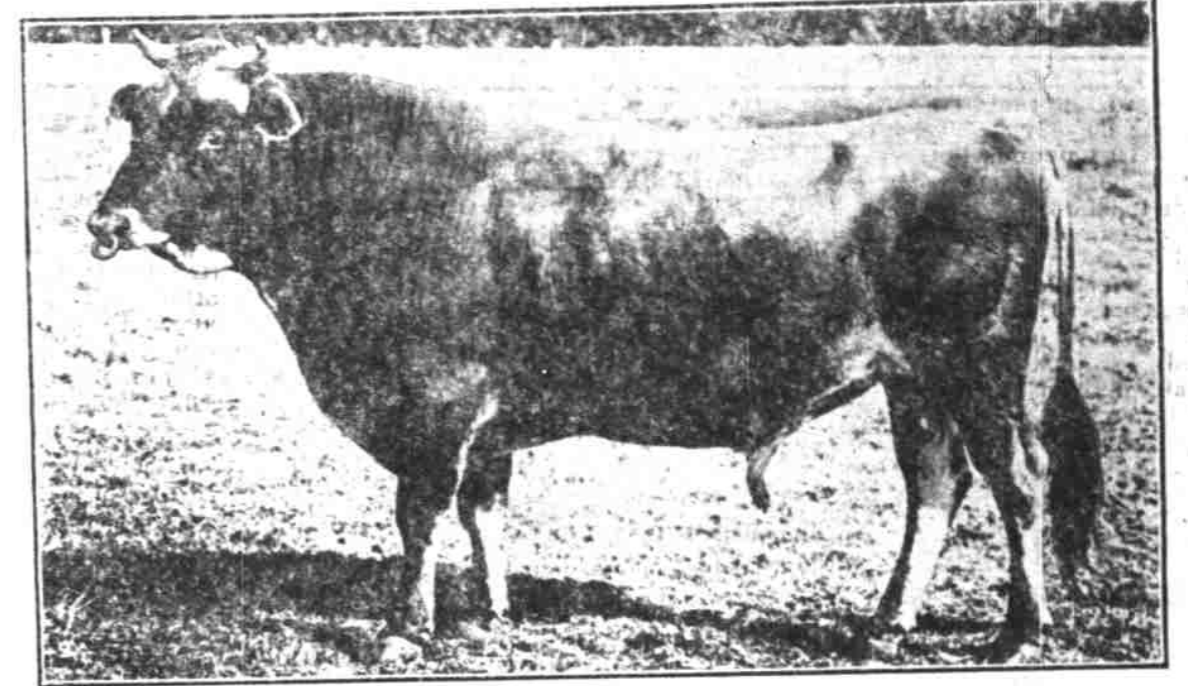
A Short Sketch of the History of Dairying in This Valley from Pioneer Times--The Present Effort Is to Weed Out the "Boarder" Cows and Bring the Dairying Industry Up to a More Profitable Basis--Butter Producers, Furnishing the Vitamines of Life, Ought to More Vigorously Advertise and Set Forth the Facts Concerning the Absolute Necessity of Dairy Products in the Dietary of the People, to Maintain a Virile Race.

The first calamity that befell the original first white settlers in the Willamette valley, was their inability to get cows. It was not thought possible to bring them

overland over the terrible "Oregon Trail." The Hudson Bay company had a few cows; but, shrewd business men that they were, they did not propose to sell them to

that necessarily the dairy herds are being decimated. But the average efficiency of the herds has been largely increased by the elimination of the "boarder" cows and the retention of a better class of cows that really pay their way.

Better Dairying Methods "It is getting easier to keep up the standard of cleanliness and quality in the products we buy," is the testimony of Manager Harpole of the Capital City Co-operative Creamery.



Holger 109744, formerly owned by McArthur and Stauff, 10 miles west of Salem, but now owned in Linn county. McArthur and Stauff have been making most creditable records with the daughters of this great bull.

representative as saying that "the butter substitutes contain no food values." That was not quite true, and the statement was challenged by a near-butter representative in a wonderfully able speech before a big business meeting in Portland.

Eyes Tested Glasses Fitted Hartman Bros. Jewelers and Opticians Salem, Oregon

KING'S FOOD PRODUCTS COMPANY Dehydrators and Canners Oregon Fruits and Vegetables Salem Portland The Dalles Oregon

the new white settlers that might take away the fur monopoly and transfer it from the hands of St. George to the Stars and Stripes of the newer America.

Save Your Clothes Salem Laundry Company 136 Liberty St. Phone 25

Wiring Fixtures Mazdas Electrical Appliances Salem Electric Company "If it's electric, come to us." Masonic Temple. Phone 1200

OWPCO. Oregon Wood Products Co. West Salem

Our efforts will be to assist in every possible way the development of the fruit and berry industries of this valley OREGON PACKING COMPANY

Capital City Laundry Quality and Service Phone 165

DIXIE BREAD Ask Your Grocer SALEM BAKING CO.

Monuments and Tombstones Made In Salem Capital Monumental Works

G. SATTERLEE AUCTIONEER Falls City-Salem Lumber Company

Made In Salem Swiss Cheese Cream Brick Cheese Limberger Cheese Salem Cheese Factory

BETTER YET BREAD It Satisfies MISTLAND BAKERY Order from your grocer

World's Greatest Cows There are more world's record Jersey cows in the Willamette valley than anywhere else in the world.

Seamless Hot Water Bottles and Combination Syringes Guaranteed Not To Leak Prices from \$1 up Brewer Drug Co.



St. Maves Lad's Lady, the world's record senior yearling, all breeds. She is a Jersey. Her record of 829 pounds of butterfat stands unequalled for age by any animal, any breed, living or dead.

Table with columns: Month, No. of cows, Average lbs. fat. Rows for January through August, and an overall Average row.