

SCOPE IS WIDENED FOR THE AMERICAN AUTO ASSOCIATION

WASHINGTON, Sept. 4.—Activities of importance to every motorist in the country are encompassed in the new and forward looking plans of the American Automobile Association. Since the recent meeting of the A. A. A. executive board, at which time it was voted to widen the scope of the organization's activities and to raise more revenue to carry on the work, the national headquarters here in Washington have been fairly popping with "pop" and resounding merrily to the hum and bustle of putting the board's decisions into effect.

New Features Introduced

While the committee in charge of the organization's automobile plans is combing the country for all the data, information and experiences necessary to establish such an important bureau, Acting Executive Chairman D. L. Morgan is making every effort to get A. A. A. legal counsel appointed in every section of the country. At the same time other members of the official staff are working out

and putting into effect many new features designed to benefit motorists generally, and A. A. A. members particularly.

Nothing Left Undone

In New York City and Washington, where membership in the A. A. A. is individual and direct, nothing is to be left undone. It is said that could be considered an aid to members. Increased activities include free towing, free legal advice, special membership protection, and renewed and closer cooperation with police departments and traffic squads in the handling of traffic and the elimination of speed maniacs, reckless operators, and all persons whose driving is a menace to other users of the streets and highways.

Branches Established

In Washington, branch stations of the touring bureau are being established with the idea of not only making it more convenient for members to obtain touring information but also to make such information available earlier and later in the day than has been the case heretofore at the main offices. This plan probably will be followed in New York City. Other plans include a printed list of all the campsites in the country together with a resume of the conditions under which they may be used; a reliable and recommended hotel service for touring motorists, and a national string of guaranteed garages and repair shops.

Renewals Increased

Although it has been necessary to explain in many instances why the membership fee has been increased, the percentage of renewals continues high and the new membership campaign inaugurated recently is meeting with success everywhere. With a large force of solicitors already employed in Washington and New York City, more are being added each week with a view to training and equipping men for field service.

The men going into the field will cover the entire country; they will go to promote membership in the A. A. A., to encourage road building and highways sign-marking, to arrange for district legal counsel, and to appoint official hotels and garages.

Salem Main Tackles Road

The first of the field representatives to take to the road was L. E. Warford, who has been associated with the New York offices of the A. A. A. for several months and who is crossing the country to begin his activities in the middle west. Mr. Warford was in Washington several days before starting, and his official A. A. A. road car, fully equipped for night and day travel in every character of country, together with his "Mo-

tor baggage," attracted wide interest as it passed through the streets of the national capital.

Warford Visits Senators

Having the momentum of roads as one of the chief objects of his trip, Mr. Warford naturally called on Senator Charles E. Townsend of Michigan, chairman of the United States senate postoffice and post roads committee, before leaving. Senator Townsend together with Senator Jones of Washington, Senator Phipps of Colorado, and numerous other national legislators came out in front of the capitol and wished Mr. Warford's outfit and wished him Godspeed.

While the A. A. A. field men will stay at hotels wherever possible, they go forth with trailers attached for use in an emergency. Their camping outfits are quite simple and meant to attract lots of attention from the residents of the sections through which they pass.

REPORT ON ROADS

(Continued from page 1.)

east of the sanitarium. (Valley road closed from 6 a. m. to 11 a. m. and from 12 noon to 5 p. m.)

Macadam under construction from Union to North Powder and the only detour available is through Ladd Canyon. Detour at end of pavement out of La Grande, which is fair; North Powder-Baker, good.

Baker-Huntington Good in general though a little rough in places; under construction from Nelson to Huntington; detour from Nelson school house to Weatherby, good; bridge across Chicken creek not in good shape; short detour at Lime, sandy and one steep pitch; within a few days traffic can pass over the new grade from Nelson to Weatherby.

La Grande - Joseph Highway

La Grande - Enterprise: Paved to Island City; rough and dusty between Island City and Elgin; from Elgin to Minam, first five miles macadamized, and fair from this point on; under construction through Willow canyon; from head of Willow canyon to Lostine, under construction but fair; detours well marked.

Enterprise - Joseph: Detours well marked; fair but heavy with dust.

Joseph - Wallowa Lake: Dusty and somewhat rough.

Central Oregon Highway

Bend - Burns: Fair; take new road out of Bend for about 16 miles.

Burns - Vale: County has removed some rocks and filled holes on the road through Drews and Westfall and it is in somewhat better condition than for some time. Through Crane, fair.

Oregon - Washington Highway

Washington State line - Pendleton: Paved.

Pendleton, through Pilot Rock-Heppner: Partly under construction; rough and dusty; detours well marked.

Heppner - Gilliam County line: Under construction and fair; detours well marked.

McKenzie Highway

Springfield - Belknap Springs: Good to Blue river; under construction but open from Blue river to Belknap Springs.

McKenzie pass open and in fair condition.

Sisters - Redmond: Graveling under way; no delay to traffic.

Redmond - Prineville: Graveled throughout and in good condition.

Prineville - Mitchell: Under construction and rough to the forest boundary; rocky to Summit, and in good condition; open to auto travel from Summit to Mitchell; fair condition.

Sherman Highway

The Dalles - Madras (Bend and Redmond): Through Sherman county, via Wasco, Moro, Grass Valley, Shaniko and Antelope; fair condition throughout.

Shaniko - Mitchell Highway

Fair in general, with a few rough places.

Baker - Unity Highway

In fair condition entire distance; first 10 miles macadamized.

Ashland - Klamath Falls Highway

Both Topsy grade, via Ager, and the Green Springs Mountain road are rough and dusty and full of chuk holes.

Klamath Falls-Weed, Cal.

Rough and dusty throughout.

Klamath Falls-Lakeview Highway

From Klamath Falls to a point 5 miles east of Olene is good macadam; hence to a point 2 miles west of Dairy is very rough on account of trucks hauling rocky thence to Dairy is newly macadamized; good from Dairy to Bly; travel is advised to take the river road from Olene to Bonanza and the hill road from Bonanza to Bly. If it is not desired to pass through Dairy; Bly to Drews alley, rough; Drews Valley-Lakeview, good.

(Bend) Lapine-Lakeview Highway

Bend-Silver Lake—Rough and dusty via either Lapine or Millikan.

Silver Lake-Paisley—Good.

Paisley-Lakeview—On account of construction work, traffic is advised to take the hill road between these points; 6 miles very rough.

Lakeview-Burns Highway

Best road via Warner Canyon and Plush; Warner Canyon recently graded and macadamized.

Glamath Falls-Crater Lake Highway

Travel advised to go on east side of lake; good macadam from K. F. to Barclay Springs; Barclay Springs-Lamm's hill recently graded and rough as no surfacing has yet been done; Lamm's Hill-Williamson River, good dirt road; thence to fish hatchery in badly rutted condition and dusty; fish hatchery-Crater Lake, excellent condition.

CUT IS MADE IN AUTO COST

Willys-Overland to Make Quotations 32 and 42 Percent Lower

TOLEDO, O., Sept. 3.—The Willys-Overland company tonight announced that radical price cuts in all models of Overland cars will become effective tomorrow.

The statement was signed by John N. Willys, president of the company in his statement, Willys pointed out that the increased efficiency in manufacturing methods and marked reductions in contract prices for new materials made the cuts possible. The statement showed that the company has used a large portion of the raw material on hand the first part of the year, and that its retail reports showed sales for the past year totaling \$65,000,000 worth of automobiles.

The cuts were among the most radical ever made by the company. The Overland car will be offered at the lowest price in its history. The new prices of Overland cars are 42 per cent under last year, and the Willys-Knight prices 32 per cent lower. The new prices of Overlands including demountable rims and electric lighting and starter, with the amount of reductions are: Overland chassis \$495, reduction \$95; touring car \$595, reduction \$100; roadster \$595, reduction 100; coupe \$850, reduction \$150; sedan \$895, reduction \$380; Willys

Kn'ght touring	\$1525,	reduction	\$370;
roadster	\$1475,	reduction	\$420;
coupe	\$2195,	reduction	\$355;
sedan	\$2795,	reduction	\$355.

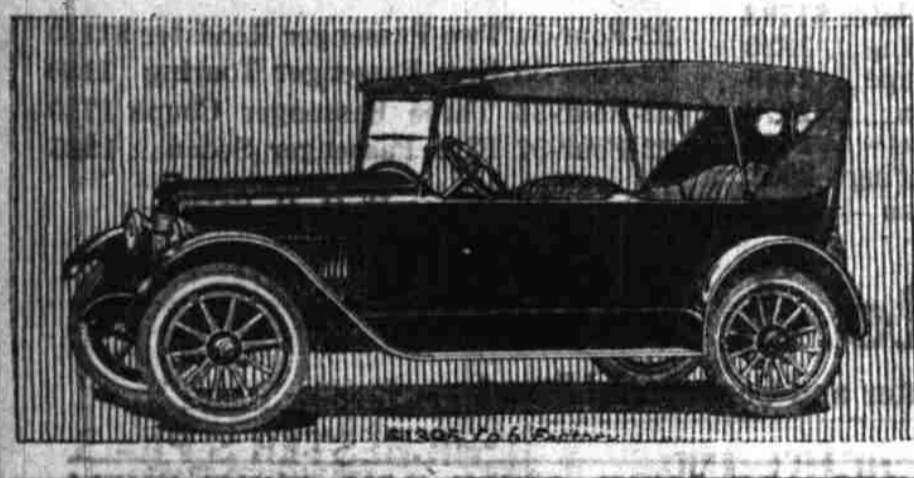
and Saussure, his patron, who followed in his steps the next year, would have cried "No fair!" had they seen a man-bird float through the air and with nothing of their toil and tribulation alight on the summit and fly off again. Yet this is what the Swiss flyer,

Dunafour, has accomplished; and his success points to a day when many peaks now sealed with difficulty are to be mounted by the rich and lay as easily as the English channel is crossed every day by many aerial voyagers.—Philadelphia Ledger.

USED CARS

Ford Touring.....	\$250
1917 Maxwell.....	\$185
Ford Sedan.....	\$700
Overland 90.....	\$450
1920 Maxwell Touring.....	\$450
1918 Franklin.....	\$1500

Gingrich Motor Co.
371 Court Street



World's Champion Light Six

Elgin Six

Comparisons continually favor the Elgin Six. Yet there's no way, quite, of really comparing its reasonable price.

Lee L. Gilbert
156 South Commercial Phone 361
Elgin Motor Car Corporation, Argo, Ill.

Tire Repairing

is done everywhere, and it's done well in many places. But there's something more to a successful tire business than mere mechanical repairing. That something is TIRE SERVICE—doing just a little more than you're paid for. If as yet you haven't had this TIRE SERVICE—we invite your patronage. We hope you'll see our point.

HOFFMAN & ZOSEL
197 So. Commercial St.
Phone 471
Katty-Korner Marion Hotel

Another thing, why doesn't somebody introduce a bill into congress making an appropriation to teach the farmers' wives how to make cottage cheese. Has it never "beckard" to the statesmen?

The improvements in the postal service are so many that it will soon be possible to get one's teeth filled by mail.

TIRES—ACCESSORIES

Perfection Tires

A quality tire at wholesale cost
We are a direct factory Branch

Investigate our tire, ask any users about them
Let us explain to you the construction and the advantage of the asbestos breaker strip and cushion embodied in the casing. No loose tread causing premature deterioration and trouble

Fabrics guaranteed 6000 and 8000 miles
Cords guaranteed 10,000 miles

PERFECTION TIRE CO.
Y. M. C. A. Building

We Wish to Announce

That we will be in our

New Location

294 North Commercial St.

Tuesday, Sept. 6th

With a Complete Line of

KELLY SPRINGFIELD

SOLID AND PNEUMATIC TIRES

Accessories, Oils and Greases, Vulcanizing, Retreading and Tire Repairing of All Kinds

QUACKENBUSH AUTO SUPPLIES

Phone 66. 294 North Commercial Street

DODGE BROTHERS COUPE

Women are always impressed by the quiet good taste of its upholstery and interior fittings.

They appreciate, too, the ease with which it can be driven, and its unvarying economy.

The gasoline consumption is unusually low. The tire mileage is unusually high.

BONESTEEL MOTOR CO.
Commercial and Ferry Sts., Salem, Ore.

A Home for Your Automobile

The CAR USER the same as the patron of a Bank must have a home and it is this home that we are inviting you to. The longevity of your automobile depends upon the care and attention you give this great machine of service. The better the home that you can provide the better service you can expect to receive.

The Marion Automobile Company offer you better service, fair, dependable treatment. We never close our doors. We keep a full line of Goodyear and United States tires and accessories.

The Studebaker and Franklin Automobiles And White Trucks

We are here to please our customers.

MARION AUTOMOBILE CO.

Open Day and Night
235 South Commercial Street Phone 362