

MY HEART AND MY HUSBAND

Adele Garrison's New Phase Of REVELATIONS OF A WIFE

CHAPTER 100

WHAT MADGE FACED WHEN SHE REACHED THE SCHOOL.

Alice Holcombe, preoccupied, anxious, looked up with a relieved smile from the big desk in the principal's office as I entered the room, a full half-hour earlier than my wont.

PERFECT SARTORIALLY AND ATHLETICALLY.



An excellent action picture of Miss Hilda Lewis on the London Country Club's tennis court. Miss Lewis has the reputation in England of being the best dressed woman in the world.

The blackberry is the favorite of all the Willamette fruits for many home canners, but it does not get into the factories. The evergreens, the hunking, double-jointed, overgrown cousins of the finer blackberries, are expected to make a record crop this season, but they too are a long way in the future.

SAM GOMPERS WINS LABOR PRESIDENCY

The railroad organizations which are reported to have backed the Lewis boom, failed to support him, two of the largest unions, electrical workers and railway carmen, voting solidly for Gompers.

LEGAL QUESTIONS HALT NAMING BEE INSPECTORS

Owing to legal questions, being involved in the appointment of bee inspectors for Marion county, the county court did not appoint deputy inspectors at the hearing given the question yesterday.

JURY DECLARES WAGNER GUILTY

Conviction is Second at Present Term for Violating Liquor Laws

After about 30 minutes deliberation, for a second time during the June term of court, a jury returned a verdict of guilty on a charge of violating the prohibition law of the state.

MRS. O'HARE SCORES THE PRISON SYSTEM

(Continued from page 1.)

In referring to her imprisonment for 14 months in the Jefferson prison for a violation of the probation act, she said:

Harrowing Incidents Told

Of the Jefferson prison, Mrs. O'Hare told many harrowing tales of brutal treatment and of unsanitary conditions. She said there was no hospital.

FINANCIAL STATUS OF INSTITUTIONS SHOWN

(Continued from page 1.)

Blind school 1919-20, \$36,150; 1921-22, \$48,383.65.

Deaf school 1919-20, \$65,900; 1921-22, \$112,328.68.

New Buildings Allowed

Although the actual increase in appropriations for these institutions over those for the two-year period ending December 31, 1920, is \$716,455.89, it must be taken into consideration that the going allowances included approximately \$698,000 for new buildings and improvements, exclusive of \$127,929.84 of deficiency appropriations authorized during the preceding biennium.

Improvements designated in the current appropriations include \$175,000 for the erection of a new wing and generating plant at the Eastern Oregon hospital building and other improvements aggregating \$61,000 at the state home for the feeble-minded, new barn and minor improvements at the state hospital estimated to cost \$12,000, new dormitory at the state industrial school for girls, \$50,000, and a new plant for the boys' training school aggregating a cost of \$280,000 and industrial building at the state school for the deaf at an estimated expenditure of \$15,000.

Deficiency Total High

Deficiency appropriations authorized during the 1919-20 biennium which also were included in the allowances for the present two-year period, follow:

Oregon state hospital, \$72,106.14; girls' industrial school, \$4218.35; penitentiary, \$15,185.99; boys' training school, \$15,048.93; blind school, \$3,882.65; deaf school, \$7478.68.

Appropriations for these nine institutions for the two bienniums, 1919-20 and 1921-22, which show the comparisons of expenditures as estimated by the legislature follow:

generating plant, \$15,000; new buildings, \$160,000.

Feeble-minded home— 1919-20 — Maintenance, \$253,200; new buildings, \$118,000; repairs and improvements, \$31,200.

1921-22 — Maintenance, \$205,200; new buildings, \$61,357.85 and repairs and improvements, \$36,000.

Oregon state hospital— 1919-20 — Maintenance, \$400,000; maintenance deficiency, \$100,588.82; repairs and improvements, \$42,000; transportation, \$25,000.

1921-22 — Maintenance, \$875,600; maintenance deficiency, \$72,106.14; new barn, \$12,000; repairs and improvements, \$19,750; transportation, \$20,000 and transportation deficiency, \$23,699.96.

Tuberculosis hospital— 1919-20 — Maintenance, \$100,750; maintenance deficiency, \$9,065.80; new buildings, \$26,300; repairs and improvements, \$19,500.

1921-22 — Maintenance, \$126,800; repairs and improvements, \$8,500.

Industrial girls' school— 1919-20 — Maintenance, \$36,056; maintenance deficiency, \$19,209.65; new buildings, \$117,500; repairs and improvements, \$19,750.

1921-22 — Maintenance, \$47,200; maintenance deficiency, \$4218.35; new buildings \$0.00 and repairs and improvements, \$63.70.

State penitentiary— 1919-20 — Maintenance, \$250,000; maintenance deficiency, \$71,152.04; pumping plant, deficiency, \$750.41; repairs and improvements, \$35,522; transportation, \$7000; aid of paroled prisoners, \$250.

1921-22 — Maintenance, \$296,400; maintenance deficiency, \$15,185.99; construction of pump and deficiency, \$4,552.26; repairs and improvement, \$32,500; transportation, \$7000; transportation deficiency, \$564.72; purchase of land, \$24,800; purchase of automobile, \$3000; plant in which to employ convicts, \$20,000.

State training school— 1919-20 — Maintenance, \$97,520; maintenance deficiency, \$12,236.12; new buildings, \$250; repairs and improvements, \$17,026.

1921-22 — Maintenance, \$117,000; maintenance deficiency, \$15,048.93; new buildings, \$600; repairs and improvements, \$10,300; returning escapes, \$1000.

State blind school— 1919-20 — Maintenance, \$31,500; repairs and improvements, \$4650.

1921-22 — Maintenance, \$40,000; maintenance deficiency, \$83,650; repairs and improvements, \$4600.

State deaf school— 1919-20 — Maintenance, \$64,000; repairs and improvements, \$1000.

1921-22 — Maintenance, \$77,000; maintenance deficiency, \$7,478.68; repairs and improvements, \$7859.60; new building, \$15,000; linotype machine, \$5000.

Population Grows

In considering the appropriations for the two bienniums there also must be taken into consideration the growth of the institutions, both with regard to population and expansion of treatment and instruction.

The following summary shows the population of the nine institutions on June 1, 1919, and June 1, 1921:

Institution 1919 1921 State hospital 1722 1791 Penitentiary 281 371 Feeble-minded 497 523 Boys' school 170 170 Tuberculosis hospital 78 99 Blind school 39 42 Deaf school 91 97 Girls school 45 25 E. O. Hospital 245 508

Present Fund Held Sufficient

Based on the per capita, as set out in the reports of the superintendents of the several institutions monthly, the added population during the past two years, would entail an expense aggregating many thousands of dollars a year.

With declining prices, officials are of the opinion that none of the nine institutions will require a deficiency appropriation during the present biennium, and in some cases they probably will have a small balance in their maintenance funds at the end of the two-year period.

OREGON DEAF TO MEET HERE JULY 1

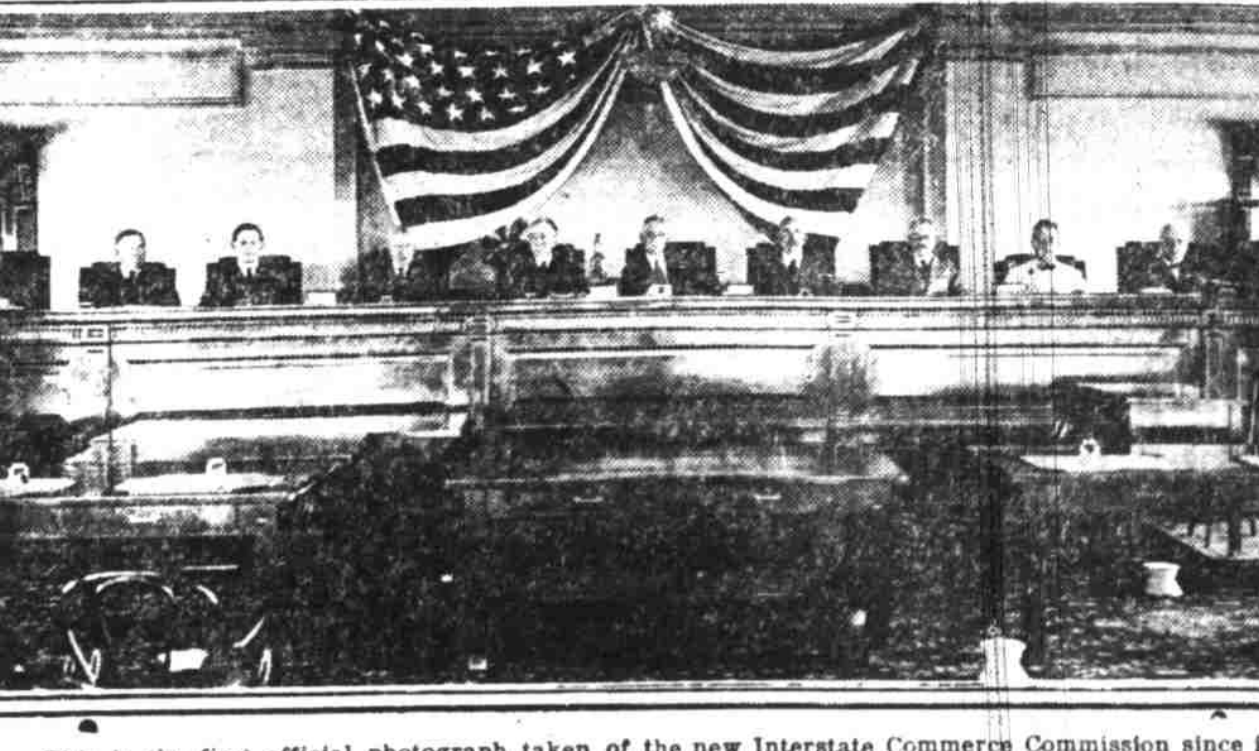
(Continued from page 1.)

and a general good time will be part of the Monday program, games, contests, picnic dinner and all that.

Graduates Coming

The last issue of The Oregon Outlook, the bulletin publication of the Salem school, shows the picture of one of the girls' basketball teams of the school with this inscription: "This cut is interesting for the reason that every member of the team has since graduated and is now happily married. Moral: Girls should play basketball." The Outlook expects every graduate of the school to be present at the convention, these six successful girls included.

THE NEW INTERSTATE COMMERCE COMMISSION IN WASHINGTON.



This is the first official photograph taken of the new Interstate Commerce Commission since it went into office. They are seated on the bench in the Department of Commerce Building, Washington, D. C. Reading from left to right in the photograph are: Judges Johnson B. Campbell, Mark W. Potter, Clyde B. Atchison, Henry C. Hall, Charles G. McChord, Edgar M. Clark (chairman), Balthasar M. Moyer, Winthrop M. Daniels, Joseph B. Eastman, John J. Esch and Ernest I. Lewis.

Developed among the girls of the school for the honor of waiting on the tables at the state convention. Especial attention is being paid to domestic arts and sciences in the school, and the artistic service the girls are able to give ought to make the convention dining room a dream of beauty.

ELK LAKE TRIP IS WORTH TWICE COST

(Continued from page 1.)

he keeps us going with jokes, songs and games.

"I will write more when the mail goes out again," Frank Hutchinson said.

Silas Fletcher writes of their trip up the beautiful Santiam, in going from Mill City. They went down to the stream at Detroit and watched the salmon trying to go up over the dam, which was a brand new experience for many of the boys. They have been making the week one long dream of good hard play and organized work and sleep like the everlasting hills. They will have more than another week of the holiday.

WINNING BASEBALL TEAM TO BE FETED MONDAY NIGHT

A dinner is to be given at the Y.M.C.A. Monday night in honor of the team that won the Twilight League championship. The officers of the league and the captains or official representatives of all the teams that took part in the league series, will be among those present with their appetites and their smiles. The dinner promises to be worth the attending, even for the man with the dyspepsia and the stout and Secretary Kells says that if there's an empty plate it won't be until after the dinner is eaten.

Considerably rivalry has developed among the girls of the school for the honor of waiting on the tables at the state convention.

BODY IS FOUND IN WILLAMETTE

Funeral of Gene La Follette To Be Held at Rigdon Chapel Monday

After many hours of searching the body of young Gene LaFollette, 11-year-old son of W. T. LaFollette who was drowned Thursday afternoon in the Willamette river, was recovered early yesterday morning by Wm. B. Berth and James H. Jacobs, both of West Salem. The body was found about 50 yards from the place where Gene was last seen in a hole estimated to be at least eight feet deep.

With grappling hooks improvised from pieces of heavy pipe and gang hooks the two men began the work early in the morning which darkness had forced them to abandon Thursday night. Taking their boat to the place where Gene sank, they allowed it to drift with the current until they were caught in an eddy about 50 yards below. Here they lowered their grappling hooks and in the first attempt located the body.

Gene was drowned Thursday afternoon while swimming with four other boys. Efforts to locate the body Thursday afternoon by diving and dragging failed. Funeral services will be held at 10 o'clock Monday at the Rigdon parlors, Rev. William T. Milliken of the First Baptist church taking charge of the service. Interment will take place in City View cemetery.

OREGON STATESMAN



CLASSIFIED ADS

WILL FIND ANYTHING

They will find lost articles, will find a buyer if you have something to sell or will find a bargain if you want to buy something.

To keep in touch with the business world--- READ ADVERTISEMENTS

You can learn more from the advertisements in your daily newspaper than you could in weeks spent in visiting stores, shops and offices.

It pays if you have nothing to buy but your own clothes and shoes and candy and books and other personal things.

If you did not read the advertisements, you might go to a store and come home again and never learn about some new goods in that store that would interest you. But the storekeeper knows and he publishes the news in an advertisement for you to read.

It pays even more if you are buying for a household.

If you did not read advertisements, you might go on purchasing one article for years when a new and better article has come to take its place.

By keeping in touch through reading advertisements you can buy to more advantage, find our where and when to get the things you want, and avoid regrettable expenditures.

It pays to keep in touch with the business world by reading advertisements.

A large part of our world of today is the world of business and commerce. And the voice by which it speaks is advertising. It has a message for you.

Keep in touch by reading this message — by reading advertisements.