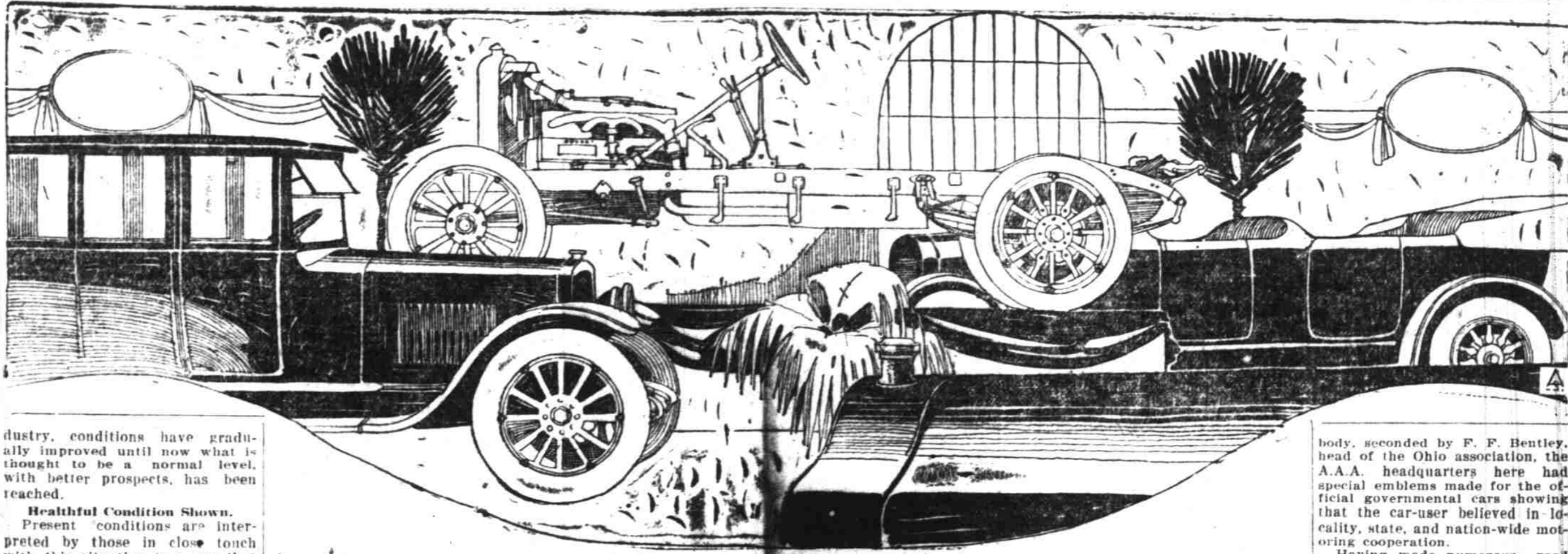


AUTOMOBILES—TRUCKS—TRACTORS—

Motorcycles — Bicycles — Accessories



FORD OUTPUT SHOWS GROWTH

Three - Thousand - A - Day Mark Passed in Big Factory at Detroit, Mich. By Workers.

INCREASE IS GRADUAL

Strengthened Demand From American Buyers Declared to Be Permanent

DETROIT, Mich., April 9.—Output in the Ford factory has now passed the 3000-cars-a-day mark and the plant at Highland Park has resumed its six-day week. This condition is reflected in all other automobile manufacturing concerns in the city and is extended to the various firms engaged in the making of accessories for automobiles.

While there has been no great spasmodic increase in the volume of business in the automobile in-

dustry, conditions have gradually improved until now what is thought to be a normal level, with better prospects, has been reached.

Healthful Condition Shown. Present conditions are interpreted by those in close touch with this situation to mean that industrial conditions are far more healthy at the present time than they were in the height of prosperity during the war period.

Manufacturers, while only making cars as they are ordered, report a strengthening demand from buyers and the present betterment is regarded as permanent. Many organizations are reported to be adding to their working force every week.

Schedule Six Days. The Ford plant is now on a 6-day week for the first time since it was closed in December. In February the plant was re-opened on four-day basis, which alternated, each shift working two weeks at a time.

The Dodge factory has announced its intention of resuming work on a one-third production basis and many of its former employees are regaining their old positions with the firm.

A. R. Shiedler a prominent farmer of the Scotts Mills district purchased a Light Six Studebaker last week. The car was bought from the Marion Automobile Co. Studebaker representatives here, through their salesman, A. Ragsdale.

ROADS DECLARE STATE PROGRESS

Salem Automobile Dealer Comments on Conditions Now and in Past

"With an aggregate fund of one billion dollars appropriated by the federal government and by the various states, highway construction this year is likely to make healthy progress," says one of Salem's prominent auto dealers.

"While not all of this fund is available for expenditure at once, there is at the disposal of the various state and county officials money sufficient to begin roadway development this spring on a large scale.

"The record of the development of transportation is an important page in the history of the world's

progress, for as man's means of communication have bettered, so has his physical well being improved and his mental growth progressed. Through the medium of good roads those heretofore practically isolated in a small community are brought into close touch with the larger center of population.

"But while our railroads have been developed to a point that has made them a model for all other nations, our highways until within very recent years, have remained but trails.

"With the advent of the motor car and motor truck, the necessity for good roads became apparent. The limited radius of the horse-drawn buggy became entirely insufficient for the gasoline propelled vehicle and there developed a real effort to improve our highways. As a matter of fact there is no longer any serious opposition to plans advanced for road construction or improvement.

"Most of us, I believe, realize the necessity for permanent highway construction, but few of us make it our business to see that the work actually is accomplished. The highway program to be carried out this year should receive the indorsement of the progressive citizen."

of the state and are made a regular appropriation from the general fund on March 15 and September 15 of each year, when they are apportioned by the secretary of state. This is the interpretation of Attorney General Van Winkle, in reply to an inquiry by State Treasurer Hoff.

Under the apportionment law, these fees, after administrative expenses in the secretary of state's office are deducted, are apportioned 75 per cent to the highway fund and 25 per cent to the counties.

MOTOR FIRST AID

The Motor Union of Great Britain maintains a patrol system of highways for the convenience of its members. The patrolmen are equipped with motorcycles and side cars and carry first aid kits. A telephone system lines the highways for the use of members for personal or business calls.

EMBLEMS USED IN WASHINGTON

American Automobile Association Monogram Placed On Harding's Car

WASHINGTON, D.C., April 9.—The White House automobiles have new A.A.A. radiator emblems. President Warren G. Harding is a member of the Marion County Automobile Association which is a part of the Ohio State Automobile Association. At the direction of David Jameson, president of the national

body, seconded by F. F. Bentley, head of the Ohio association, the A.A.A. headquarters here had special emblems made for the official governmental cars showing that the car-user believed in locality, state, and nation-wide motor cooperation.

Having made numerous road trips between Washington and Marion, most of the route being over the "Old National Road," President Harding has repeatedly come in contact with actual highway conditions, and in con-

sequence has given the subject no small amount of attention. One point which he has always emphasized has had to do with the proper maintenance after construction, and this opinion has been expressed by him again and again. There is a belief that in any future Federal help to the states in highways, the "Head of the Nation" will insist upon a maintenance provision which shall be definitely expressed.

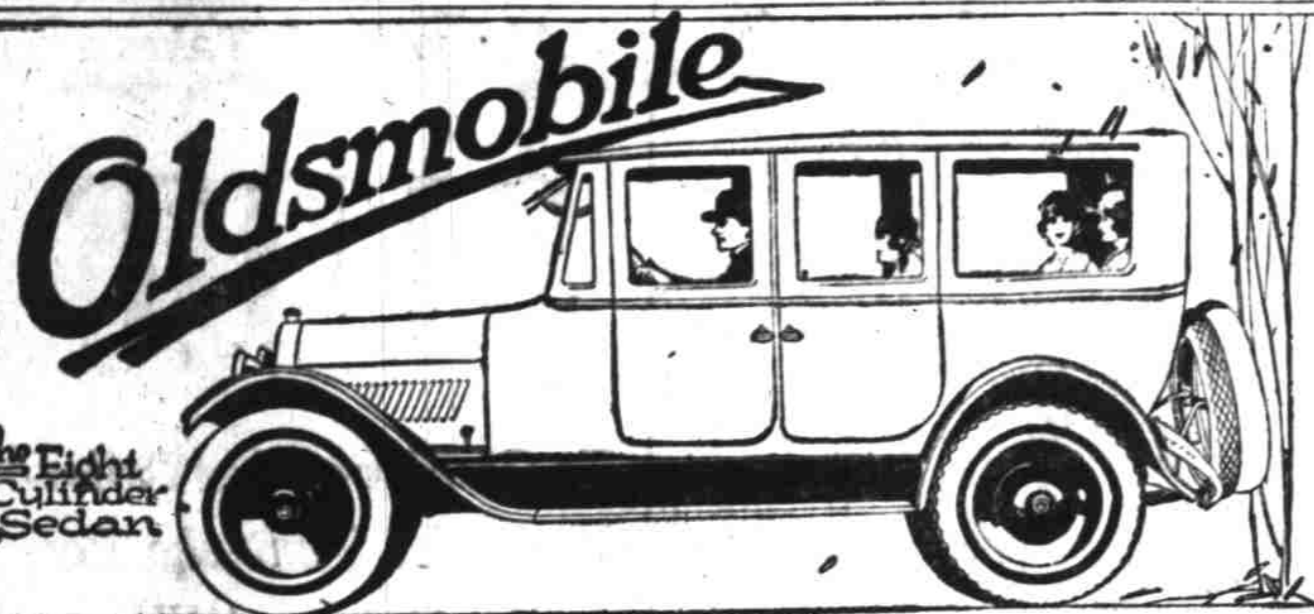
Farmer—Hey, there, how come you to be under my apple tree. Meandering Mike—I just fell out of an airplane.

Free Towing ADVANCE-RUMELY GARAGE & MACHINE SHOP

solicits all kinds of automobile and tractor work. Expert mechanics insure the best results at the least expense. All makes of auto and tractors repaired and rebuilt, any place, any time.

Phone 222

326 North Commercial



Leadership in Sedans and Coupes



OLDSMOBILE long foresaw that the wide-spread popularity of the enclosed car was inevitable. Accordingly, a variety of models was developed in order that every Oldsmobile enthusiast might be enabled to choose one that precisely fits his requirements.

These beautiful enclosed cars reflect Oldsmobile's twenty-three years of leadership in a number of ways. They establish a most distinguished style. They set the pace in comfort, in smartness, in convenience and in mechanical reliability.

The eight-cylinder Sedan is a luxurious, dignified seven-passenger coach. The six-cylinder Sedan is a commodious five-passenger car. The Coupe, also built on the standard six-cylinder chassis, is a three-passenger car with a forward-facing auxiliary seat for a fourth person.

A thorough investigation of any of these models will prove to your complete satisfaction that Oldsmobile offers supreme value in enclosed cars.

OLDSMOBILE SALES CO.

185 S. Commercial Street

Phone 380

YANKS WILL BE IN FRENCH RACE

America to Be Represented For First Time in Grand Prix Contests

When the French Grand Prix automobile race is revived in July, America will be represented for the first time in the history of the famous speed classic.

Four Duesenberg cars will go to the starting line to meet the cream of the French, English, Italian and Belgian race creations. The American entries are sponsored by Albert Champion of Flint, Mich., president of the Old-Timers' club and head of the Champion Ignition Company.

Ralph Mulford, a veteran road race driver, and Jimmy Murphy, who rose from comparative obscurity to stardom during the 1920 speedway racing season, have been selected to drive two of the Duesenbergs, while the other American entries will be handled by Frenchmen—Albert Guyot, who has been seen in action at Indianapolis and Inzhibert.

The Duesenbergs were selected to represent America in the Grand Prix because they were the only cars ready for such a strenuous race. They have already proved their superior speed and stamina, and have dominated American racing for the past two seasons, winning eight of the nine speedway and road-racing events on the 1920 schedule.

America's maiden participation in the 1921 Grand Prix will add much to the normal interest created by this classic of all automobile classics, which has not been run since the outbreak of the World War, the 1914 Grand Prix being staged on July 4 and won by Lautenschlager in a German Mercedes.

Motor Vehicle Receipts First Go to General Fund

Receipts from Oregon motor vehicle license fees shall not immediately be credited to the state highway fund when they reach the state treasurer's office, but go instead into the general fund

Studebaker

Materials used in the manufacture of Studebaker Cars are the best that money can buy. The highest priced cars contain nothing better or more expensive, pound for pound, although such cars, being heavier, contain greater quantities of such materials. In Studebaker Cars the public pay only for necessary weight.

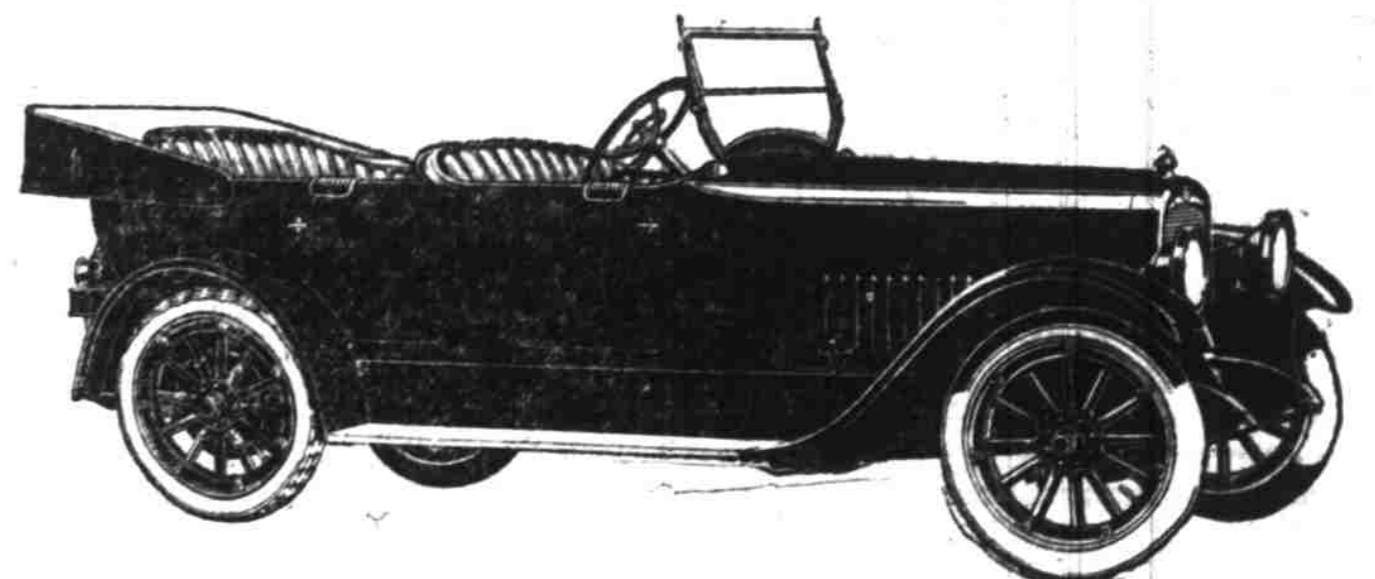
Light-Six Touring Car.....	\$1750.00	Special-Six Touring Car.....	\$2085.00
Light-Six Landau-Roadster.....	\$1990.00	Special-Six 2-Passenger Roadster.....	\$2085.00
Light-Six Sedan.....	\$2490.00	Special-Six 4-Passenger Roadster.....	\$2085.00
		Special-Six Coupe.....	\$3045.00
		Special-Six Sedan.....	\$3145.00
		Big-Six Touring Car.....	\$2550.00

F. O. B. South Bend

F. O. B. Salem

All Studebaker Cars Are Equipped With Cord Tires

This is a Studebaker Year



Marion Automobile Co.

Open Day and Night

Distributors, Salem, Oregon

Phone 362