

Machine Shop Owner Would Remedy Troubles

Roy Stevens, proprietor of the Advance Rumley George & Machine shop, announces that he is prepared to render prompt and efficient service to all makes of tractors and automobiles in Marion and Polk counties.

Mr. Stevens states that a phone call to his shop No. 222 will bring an expert tractor mechanic to any disabled tractor or auto in the counties mentioned. The Advance Rumley shop employs none but expert mechanics. This policy means much to the tractor owner for it will save needless experimenting involving loss of time and expense. Mr. Stevens states that while he did not open his shop until last fall he has already established a good trade which is growing each day as the spring work is now in full swing.

LEAPS 67 FEET ON CYCLE

Doubling for the star in a "big punch" scene for a motion picture feature now in production at Palahassa, California, California, Gus Martin, well-known Los Angeles motorcycleist, not only clear the young chasm under him, but his leap of 67 feet set a new record in the annals of motorcycle feats. Measurements taken showed that Martin made a lap of 67 feet from take-off to the point where the machine first landed, and it traveled a total distance of 97 feet before it came to a stop. The landing spot was 8 feet lower than the take-off. Those who witnessed the madcap leap, including the movie folk, declare it to

be one of the greatest motorcycle feats in the history of film making, as well as breaking the former record of 54 feet.

Year's Record 28,000 Miles.

R. B. (Red) Parrish, the "most traveled man in America," and pathfinder for the travel and transport bureau of the B. F. Goodrich Rubber company, and his motorcycle sidcar outfit, have zigzagged through another year. Motoring here, there and everywhere, "Red" has established a new long-distance motoring record during 1920 which will probably not be broken for many years. Before December had drawn to a close, Parrish crossed his 28,000-mile mark, thereby beating his old record of 19,543 miles made in 1917 by nearly 50 per cent. Twenty-two states were toured during the last year by Parrish, his route taking him through the east, middle west and south, ending up at Jacksonville, Fla. Parrish is high in his praise of his motorcycle outfit, having voluntarily decided on this form of transportation as being the ideal mount both in an economical way and from a sporting standpoint.

MONEY THROWN AWAY

Statistics show that one-third of the tires used each year fail to give their mileage, because of neglect in having the small tread cuts and holes repaired in time. A great many tires can be made as good as new by having them retreaded, or sections put in where tire has blown out.

Vick Brothers Report Business Picking Up

Vick Brothers report business picking up, as they have sold and delivered the past week one Yuba tractor and have taken orders for two more to be delivered as soon as possible; also several car deals have been closed during the week.

All three Yuba tractors have been sold to hop growers, and it is proving an ideal tractor for this work. It is used in connection with a Ketterlin plow which is especially designed for hop cultivation and plows either to or from the rows. It is equipped with a power lift and completes an entire row by going through once. The Yuba tractor is narrow enough and strong enough to do this work easily and the new owners are more than pleased with its performance.

Patrols Reduce Damage

With the temperature hovering around 33 degrees as it has been during the last two or three weeks in the California citrus fruit district, the motorcycle frost patrols are reducing the damage of former years to a wonderful extent. Squads of motorcycle riders are assigned to the different valleys where oranges, lemons and grapefruit are the principal sources of economic wealth. These riders keep tabs on a large number of temperature stations in widely separated localities and the moment the mercury drops to the point of creating frost which will damage the fruit, the news is flashed broadcast by telephone. The smoke pots in the orchards are then lighted and Jack Frost is kept away from the scene.

Safety of Cycle Traveling

Reports of accidents from the office of the Indianapolis chief of police for the year 1920 show the motorcycle about the safest means of transport. Motorcycles were responsible for 37 accidents and automobiles for 1,222. No deaths resulted from the motorcycle accidents. Bicycles came in for some glory as a means of safe transportation causing only 55 of the street accidents and no fatalities.

Cast Piston Rings Rapidly

A Brazilian living in New York has invented a machine to cast piston rings at a rate of 18,000 to 20,000 a day by whirling molten metal into shape by centrifugal force.

Tractor Production in 1919

Statistics on tractor production in the year 1919 just made public by the bureau of public roads of the United States department of agriculture place the number of tractors produced by eighty concerns in that year at 164,590. The production fell considerably short of estimates furnished by the manufacturers in the fall of 1918 for the year 1919.

Teach Children Traffic Rules

In the schools of Cleveland, O., a course of instruction in traffic rules is given the small children in order to avoid their being injured in crossing streets. Lines are drawn on the school room

WILL FLY IN TOURNAMENT.



Lieutenant C. C. Chauncey, who heads the group of aviators from Carlstrom Field that will be entered in the National Southern air meet at Belleair, Fla., March 26-28. The important feature of the tournament is the Southern Air Derby over a twenty-mile course, for a distance of 100 miles. The tournament is slated to be the most important event in aeronautics to be held in the South since the world war ended.

floor to represent car tracks and the sidewalks; one child with a semaphore represents the traffic policeman and other children represent automobiles.

Allies Seek Bees and Domestic Animals

BERLIN, Mar. 23.—Bees, Belgian hares and sheepdogs are among the domestic pets the Entente powers are demanding from Germany.

The ship, carrying the miscellaneous assortment of animals which Germany's former enemies are demanding will have almost as great an assortment as Noah's craft.

Decision of the reparations commission on the exact number of rabbits which Germany must deliver has been postponed for a month. The Entente demanded 200,000. Meantime, the German

delivery by Germany of 919,550 head of cattle to her former enemies within three years.

Delivery of the cattle, it was agreed, should take effect "from the date which shall be agreed upon by the experts of both parties, having regard to the prevailing conditions of health."

The stock of cattle in Germany in 1919 numbered 16,523,803, which in the first months of 1920 was increased by 380,573 head.

"A rich man's daughter married a poet."

"Did the old gentleman do anything for the couple?"

"He set the poet up in business."

"In business?"

"Yes. He bought him \$1000 worth of stamps."

—Birmingham Age-Herald.

Burns
Bandage the spot with plenty of soothing
Mentholatum
Cooling and heals gently and antiseptically.

Read The Classified Ads.

Accessories Service Vulcanizing

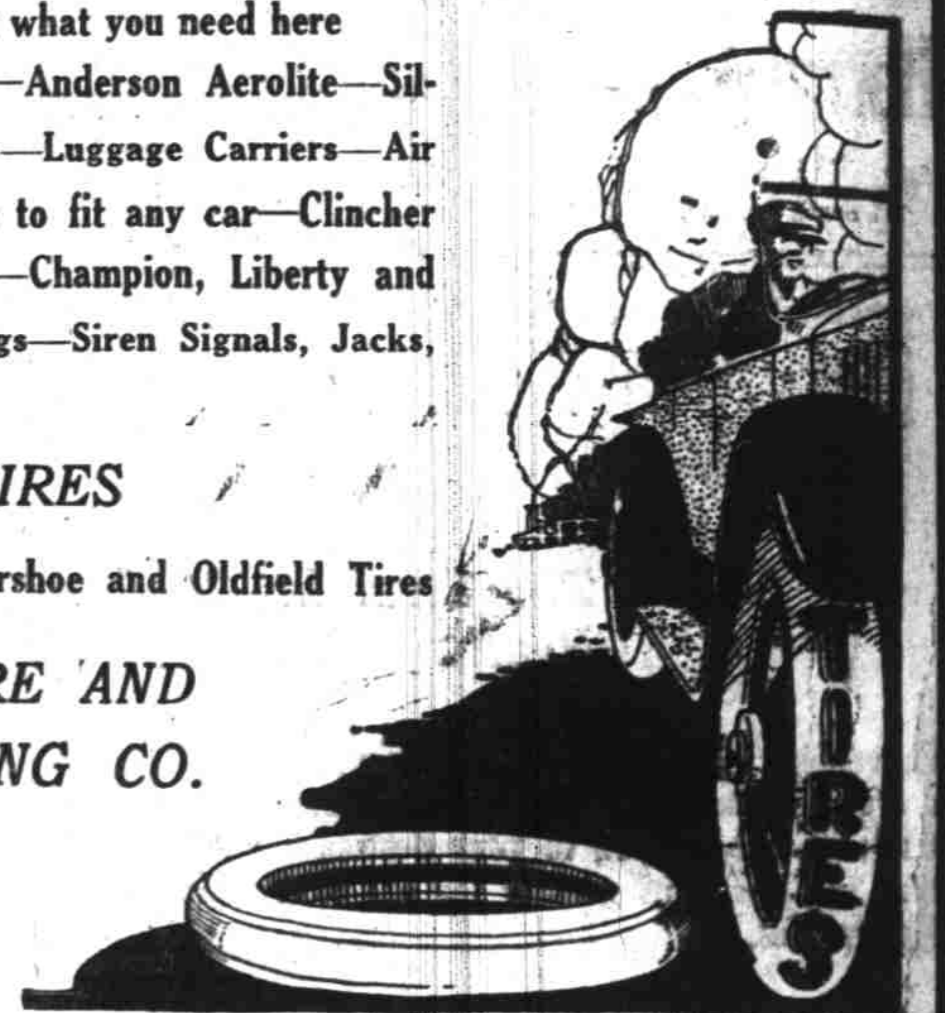
You'll find just what you need here
 Kay Bee Spotlights—Anderson Aerolite—Silver Beam Spotlights—Luggage Carriers—Air Friction Carburetors to fit any car—Clincher Rim Tire Changers—Champion, Liberty and Splittorf Spark Plugs—Siren Signals, Jacks, Pumps, etc.

TIRES

Sound—Racine—Horseshoe and Oldfield Tires

SALEM TIRE AND VULCANIZING CO.

154 South Commercial Street



The "Exide" Starting & Lighting Battery

is a quality product. It is made right at the factory and stays right in service. It has built into it real, dependable power and service-proved durability—the two important factors which insure satisfactory automobile battery service.

We've an "Exide" that is correct in size and capacity for your car. Come in and examine it; see what "Exide" construction really means.

Our Battery Service is indispensable to the car owner; use it regularly—no matter what the make of Battery on your car

R. D. BARTON
SALEM, OREGON

171 South Commercial St. Phone 1107

BUICK

FOR twenty years Buick has returned full value as an investment in personal transportation.

Today the new 1921 models return this same value in characteristic Buick reliability and sturdiness—with greater beauty, comfort and refinements. Let us demonstrate to you the ease of operation and accessibility of mechanism in these new models.

Authorized Buick Service will serve you as faithfully as the Buick car.

Since January 1st, regular equipment on all models includes Cord Tires

Otto J. Wilson

388 North Commercial Street

When Better Automobiles Are Built, Buick Will Build Them



The Oldsmobile Thorobred

ALL things considered, the Oldsmobile "Eight" affords supreme motor car value.

A car of ultra-distinguished appearance; built on a chassis that is a masterpiece of advanced engineering; flexible in operation and extremely high powered; exceptionally comfortable and finely appointed; economical—that in brief describes the dependable, roomy 7-passenger Oldsmobile Thorobred.

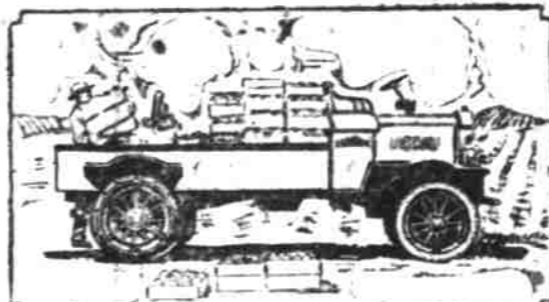
Other Oldsmobile models are the 4-passenger Pace-maker and the 7-passenger Sedan

Oldsmobile Sales Co.

185 S. Com'l St. Phone 380

SAMSON

TRADE MARK REGISTERED U.S. PATENT OFFICE



Before You Buy Your New Motor Truck for Farm Work

Before buying a motor truck there are many features of its construction upon which you will naturally want to satisfy yourself.

First, is the truck the right capacity for your work?

Is its construction adapted to your needs?

Is it economical with tires, gasoline and oil?

Will it give good service, day in and day out, regardless of the uses to which it is put?

Can it be used in soft fields and on muddy, rough roads as on smooth improved highways?

Check up the Samson on all these points. We know it will meet everyone of your truck demands.

The close-coupled seat back of the hood gives a

third more loading space than you will find in any other truck of equal rated capacity.

This feature also permits a more even distribution of weight which makes the Samson very economical on tires and gasoline.

The sturdy construction of the Samson combined with correct designing, enables it to stand up under the hardest use.

The extension bases with demountable, grouter-equipped cleat bands enable the Samson Truck user to drive on heavy-going roads of mud, snow or slush or on soft fields, and get perfect traction.

We are ready to show you the full line of Samson Trucks. Let us explain their many important farm-work features.

A Book for the Asking

Call or write for Samson truck book which tells you all about the Samson 3/4- and 1 1/4-Ton Trucks.

VICK BROTHERS
Samson Dealers
High and Trade Streets