



Don't let
This
crush
YOU

YOUR HOME

When you have a nice fat bank account, you won't fear the danger shown in the above picture.

It's a mighty comfortable feeling to know that the steady deposits you made in our bank has secured you against financial disaster.

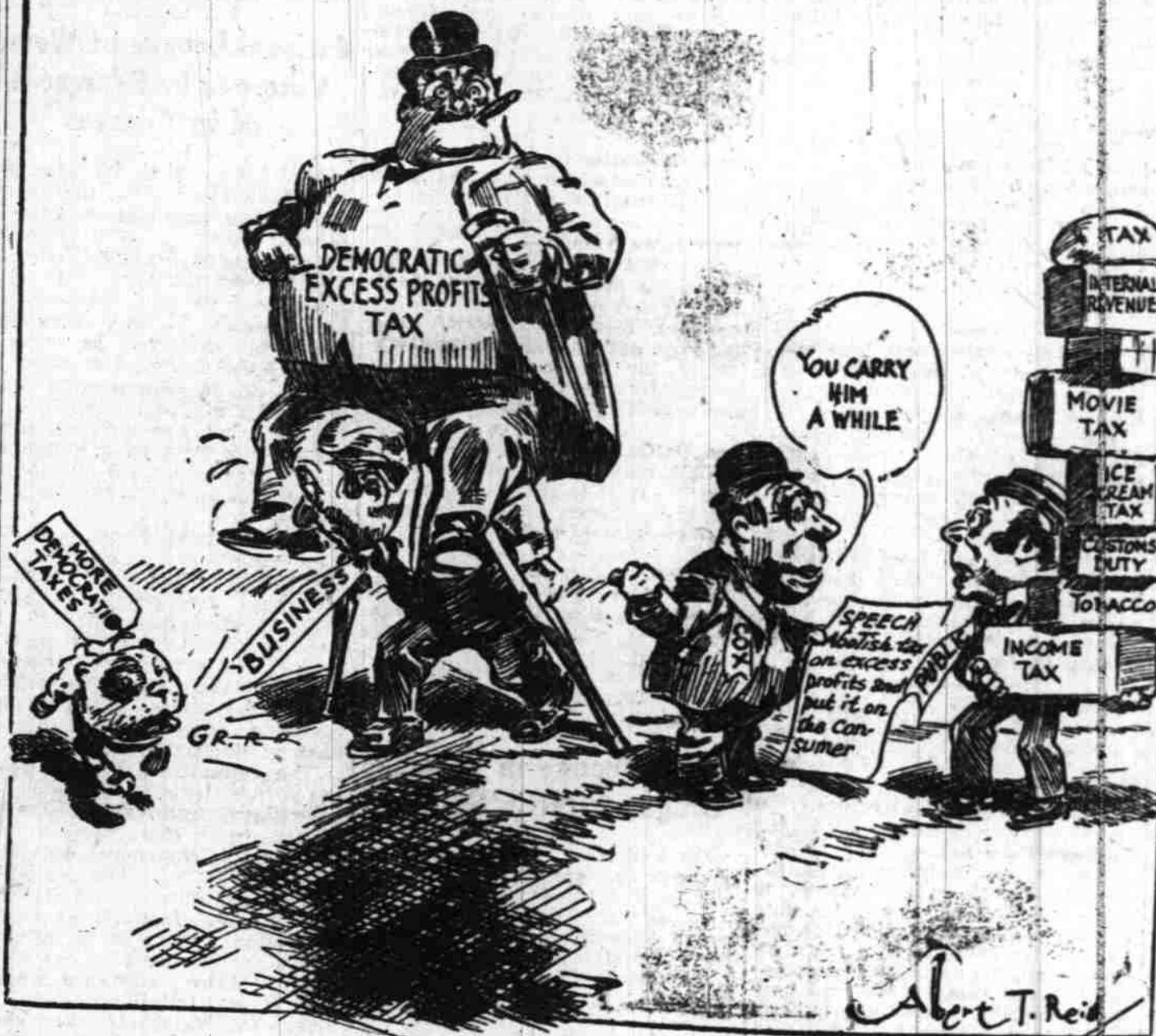
Come in and start a bank account or come in for advice or help in your money affairs.

Put Your Money in Our Bank

You will receive 3 per cent interest

Salem Bank of Commerce
SALEM, OREGON

WHY NOT GET RID OF HIM ALTOGETHER?



SHRINERS CAVORT AT OREGON STATE FAIR

(Continued from page 1)
The best in history, the Boys' and Girls' club exhibits 50 per cent above the 1919 state fair, the county and agricultural displays excelled by a big margin, and the entertainment features and racing

program was the best in many years.

Secretary A. H. Lea, who severs his connection with the state fair board this year after five seasons of activity in that capacity, leaves behind him a record that will be difficult for his successor to excel. He has realized the possibilities of the state as an agricultural and livestock leader, and with splendid vision has endeavored to stimulate interest along these lines by larger premiums in these departments, and by securing as heads for them some of the most alert and vitally interested men in these fields.

Reputation Extended.
That he has succeeded in his endeavor is evident in the reputation that the Oregon state fair has gradually built up as an annual livestock and agricultural exposition. The fame of the yearly event has spread abroad until eastern, southern and middle western stockmen are anxious to be represented, as was demonstrated this year.

And these exhibitors who have visited state fairs all over the country are unanimous in the assertion that the Oregon state fair is superior to any other state fair west of the Rocky mountains, and compares favorably with the greater number east of them.

Boundary Lines Given for Schools of Salem

Below are given the boundary lines of the Salem schools. They are practically the same as last year except as they affect the third, fourth, fifth and sixth grades of the Washington school. The first and second grades are not affected and neither are the junior high school grades:

Between Highland and Grant—Same as last year. Commencing at Willamette river, proceed east on Shipping street to Fourth then north on Fourth to Norway, then east on Norway to Church, then north on Church to Jefferson, then east on Jefferson to Fairground road, then northeast on Fairground road to Madison street, then east on Madison to the district boundary.

Between Park and Lincoln—Commencing at the Willamette river, proceed east on Mission street, then south, through Bush pastures along Davidson street east on Howard street to Berry street, then south on Berry street to the district boundary.

Between Grant and Garfield—Commencing at Willamette river, proceed east on Mill creek to Current street, then east on D street to Twelfth street.

Between Park and Richmond—Beginning at Seventeenth street and Mill creek, proceed south on Seventeenth street to Turner road, then on Turner road southeast to the district boundary.

Between Park and Garfield—Trade street to Twelfth street, then north on Twelfth street to Center street.

Between Englewood and Richmond—Beginning on Seventeenth street and Mill creek, proceed southeast on Mill creek to State

street; then east on State street to Twenty-first street; then north on Twenty-first street to Marion; then east on Marion to the district boundary.

Between Englewood and Park—Beginning on Twelfth street and Center, go east to Mill creek, then on Mill creek to Seventeenth street.

Between Englewood and Garfield—Twelfth street.

Englewood and Grant—Southern Pacific railroad.
Boundaries of Washington for first and second grades. Northern boundary commences on Summer and D street, goes east on D street, then south on Twelfth street to B street, then east on B street to Eighteenth street, then south of Eighteenth street to Center, then northeast on Center to Twenty-first street, then south on Twenty-first street to State street, then west on State street to Seventeenth street, then on Seventeenth street to Trade, then west on Trade to Summer, then north on Summer to D street.

Boundaries of Grant and Washington junior highs—Beginning at the Willamette river, go east on Division street to Cottage, then north on Cottage to Mill creek, follow Mill creek to Parrish street, then east on Twelfth street, then north of Twelfth street to D street, east to Fifteenth street, then north on Fifteenth street to Nebraska street, then east on Nebraska street to Seventeenth street, then north to Frickey street, then east to district line.

Washington and Lincoln junior highs—Beginning at the Willamette river, go east on Mill street to Winter, then south to Mission street, then to Fifteenth, south to Waller street, go east to Seventeenth, then south to Hines, then east to Turner road, then southeast on Turner road to the district line.

Whitman's Registration Reaches Total of 514

WALLA WALLA, Wash., Oct. 2.—Registration at Whitman college has broken all records, the total up to this evening being 514 which includes the college proper and the conservatory. The college registration is 353.

FIRE IS UNDER CONTROL

GALVESTON, Tex., Oct. 2.—Fire which has been burning in section A of pier 41 since 9:30 a. m. yesterday, was pronounced under control at midnight. About half of the 150,000 bales of Mexican sisal in the compartment will be salvaged, it was announced.

New Coast Steamship Service Established

ASTORIA, Or., Oct. 2.—Direct steamship service between Astoria and California points will be established November 1, according to an announcement by R. R. Bartlett of the port of Astoria. The new line will be known as the Astoria and West Coast Steamship company.

H. L. Kincaid, Prominent Oregonian, Is Dead

PORTLAND, Oct. 2.—Harrison L. Kincaid, former secretary of state for Oregon and for 50 years identified with journalism in the state, died here today at the home of his son, W. L. Kincaid. His home was at Eugene.

BAKER SUSPENDS TWO.

PORTLAND, Oct. 2.—Mayor Baker today issued an order suspending W. D. Morris and E. A. Jackson from the police force until after their jury trial for complicity in the fatal shooting of Robert W. Hedderly, alleged bootlegger, on September 10.

Shipping Board Gets Only One Coast Bid

PORTLAND, Oct. 2.—H. B. Miller, director of the Pacific coast division of the supply and sales department of the shipping

board today announced that only one bid was received yesterday for the purchase of materials remaining unsold in the shipyards of the Pacific coast district, and that in view of this fact he had telegraphed to Washington recommending that the bid be held in abeyance and the time for the receipt of other bids extended. His action was taken after other firms who desired to bid for the materials had protested the closing of the deal at this time on the ground that specifications for the materials were not sufficiently definite. It was said the approximate value of materials on hand at Tacoma is \$1,000,000, at San Francisco, \$2,000,000, and at Portland, \$2,000,000.

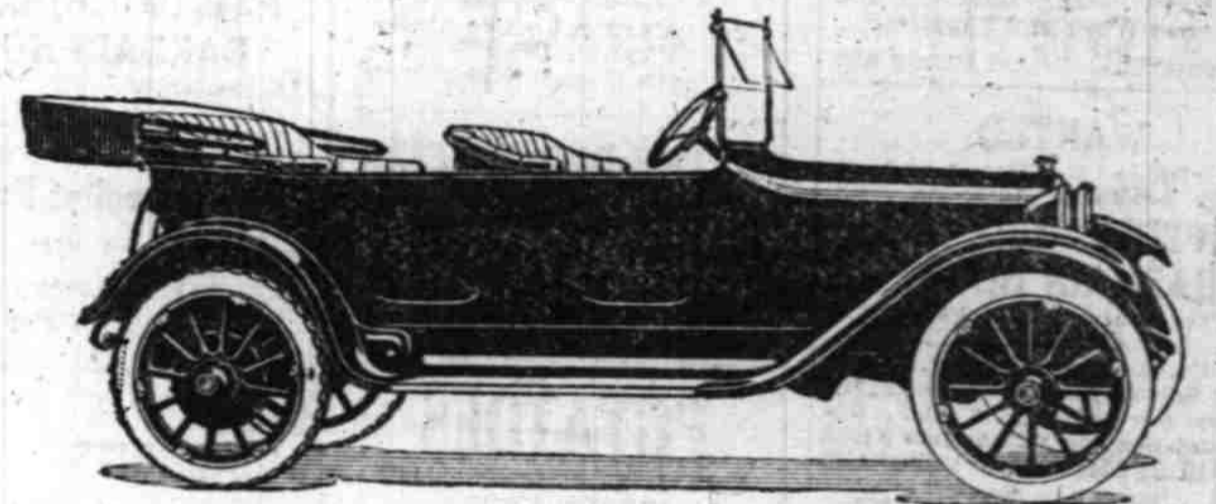
DODGE BROTHERS MOTOR CAR

The public believes implicitly in the goodness of Dodge Brothers Motor Car, because it has found, in sixty-seven months of experience, that it is all it is represented to be.

The gasoline consumption is unusually low. The tire mileage is unusually high.

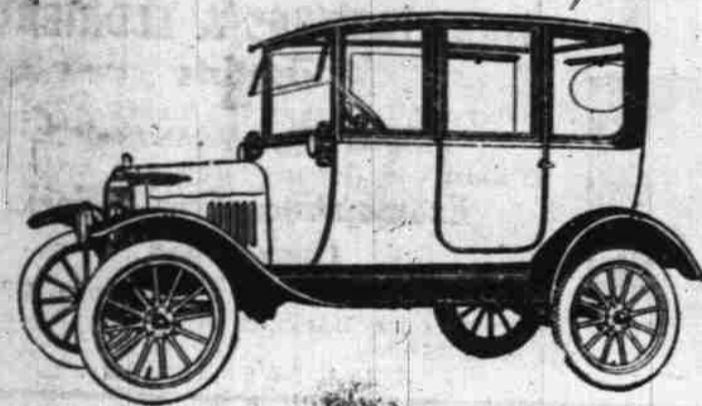
H. F. Bonesteel

Marion and Polk County Distributor
Ferry and Commercial Streets Salem, Oregon



Rain and Cold Weather Predicted

It does not require a weather prophet to make this prediction; the season is on us, when the rains will start, with cold winds blowing their icy blasts, and the Auto owner will dread driving his machine; but that only means those who own the Open or Touring Car. The owner of a Closed Car will retain the happy smile, and continue to enjoy the conveniences and joy of motoring.

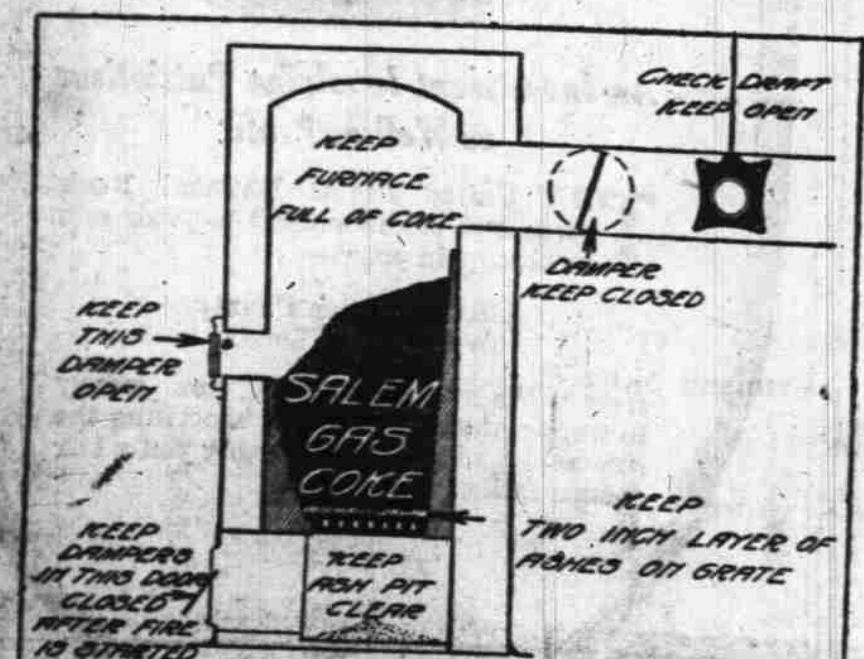


Enclosed in plate glass with clear vision to every occupant of the car, riding on beautifully upholstered cushions, the car nicely warmed from the engine, the driver and guests protected from the icy blasts and down pouring rain, the owner of a Ford Coupe, or Sedan—laugh at the elements and continue motoring without interruption.

We Can Make Immediate Delivery

Don't lose months of driving on account of weather. Get a Closed Car today and enjoy life all the year around.

Insist on Genuine Ford Parts
Valley Motor Co.
Insist on Genuine Ford Parts



SALEM GAS COKE

No Smoke - No Dirt Little Ash

The clean, economical, efficient fuel for furnaces, hot water and steam boilers, bakeries, and for any purpose, where heat and cleanliness are required. Properly burned, "Salem Gas Coke" will give

Order Your Winter's Supply Now. Our Output Is Limited

you better results and more satisfaction than any other fuel you have ever used.

SALEM GAS WORKS

Phone 85 237 North Liberty Street

We unreservedly endorse Republic Grande Cord Tires.

They have proven, like their fabric namesake, that they wear down slowly and evenly like finely tempered steel.

Our word to you—the Republic Grande Cord Tire is supremely worthy of its name, its record and the Republic reputation for longer life and greater value.

SALEM AUTOMOBILE CO.

F. G. Delano Salem A. I. Eoff Dallas

REPUBLIC GRANDE CORD TIRES

