

CHURCH NEWS

Evangelical Church
Chemeketa street, F. W. Launer, pastor. Sunday school at 10 a. m. J. Leppold, superintendent. Sermon at 11 a. m., subject "Wilt Thou be Made Whole?" Y. P. A will be led by William Scholl. Sermon at 7:45 p. m.: W. M. S. Tuesday evening at the church. Mrs. F. W. Launer will give report of big convention held in Seattle last month. Prayer meeting Thursday evening. Sermon at Fruitland at 3 p. m.

Presbyterian Church.
Thomas S. Anderson, minister. Joseph H. Albert, school superintendent. All services at the usual hours today. The pastor will preach at morning service on "How to Mind Your Own Business." In the evening the theme will be "Our Father." A welcome for everybody.

Seventh Day Adventist.
North Fifth street and Gaines avenue. Tonight at 7:30 Evangelist A. E. Bell, pastor, subject "A Question Service." The evangelist will spend the hour answering some very interesting questions that have been handed in. If you have a question in your mind on the Sabbath, the immortality of the soul, the state of the dead, the gospel of Jesus, the grace of God, the second coming of Christ, justification by faith, etc., come and have it answered. You will miss a treat if you miss this quiz meeting.

South Sacm Friends.
South Commercial and Washington streets, H. E. Pemberton, pastor. Church Bible school at 10 a. m. with all the usual classes, Carl Miller, superintendent. Meeting for worship at 11 a. m. with special music and preaching; the theme, "Saul of Tarsus." At 7 p. m. the young people will meet in the C. E. room; gospel meeting in the evening at 8 o'clock. All are welcome. Thursday at 8 p. m. the prayer meeting—studying Acts 5th chapter, Mrs. F. A. Elliott, leader.

First Church of Christ Scientist.
Sunday services held at 440 Chemeketa street at 11 a. m. Subject of

Bible lesson. "Mortals and Immortals." Sunday school at 9:45 a. m. Wednesday evening testimonial meeting at 8 o'clock. Reading room, 209 Masonic temple, open every day except Sunday and holidays, from 11:45 a. m. to 6 p. m. All are invited.

Leslie Methodist Episcopal.
South Commercial and Meyers streets, Horace N. Aldrich, pastor. At 9:45 a. m., Sunday school, with classes for all ages and grades, E. A. Rhoten, superintendent. Primary department meets in Leslie hall, under the direction of Miss Sue Williams. At 11:00 a. m. public worship, with sermon by pastor, theme, "What is Faith?" Devotional meeting of the Epworth league at 7:00 p. m., led by Ed Nerone. At 8:00 p. m. the pupils of the State School for the Blind will lead in a song service and will sing several special numbers. The sermon will be delivered by the pastor.

Scandinavian Methodist.
Fifteenth and Mill streets. Service at 11 o'clock, Rev. C. H. Hassel will preach. Sunday school at 12. Mr. Gust Anderson, superintendent.

First Methodist Episcopal.
State and Church streets, Dr. Richard N. Avison, minister. At 9:15, old time class meeting, room 4 downstairs, W. L. Cummings, leader; 9:45 Sunday school, Prof. Alpheus Gillette, superintendent. Robert Fisher, assisting; 11 a. m. (in the absence of the pastor) Dr. Charles A. Brown will preach morning and evening. Morning theme, "Christ the Pioneer"; 3 p. m. Prof. E. E. Bergman will preach at the Old People's Home, corner Twelfth and Ferry streets. At 7:00 p. m. Epworth league anniversary, Hubert Wilkin, leader. Intermediate league in Epworth hall; Junior league upstairs; 8 p. m. (note change of time), senior. On Thursday, 8 p. m., midweek prayer and praise service.

First Congregational.
Liberty and Center streets, W. C. Kantner, minister. At 10:00 a. m. Sunday school with classes for all. W. I. Staley, superintendent; 11:00 a. m. "Christianity as a Social Force;" 7:00 p. m. Christian endeavor, Miss Nell Fake, leader. At 8:00 p. m. "Are You Registered?" Pictures.

Central Congregational.
South Nineteenth and Ferry streets—H. C. Stover, minister. Sunday school at 10 a. m. in charge of Mrs. B. E. Edwards. Dr. Cammick will address the Sunday school at 11 a. m., subject "Africa." Christian Endeavor at 7:15 p. m. Evening service at 8 p. m.

Court Street Christian.
North Seventeenth and Court streets. Bible school at 10 a. m. sharp. Remember the first Lord's day in June is Children's day. Our aim is 225 present. That's easy. Let's get busy and beat it. Talk by pastor to children during closing exercises. Sermon at 11 a. m., subject, "Why the Tithe?" Come hear this sermon. The church at Turner invites the brethren to bring a basket dinner and enjoy fellowship with them on the convention grounds. The pastor will conduct a baptismal service after the sermon at Turner Junior and Intermediate C. E. at 5:30 p. m. Y. P. S. C. E. at 7 p. m. Song service and sermon at 8 p. m. Come and enjoy the song service, under new song leader. Sermon, "The Handwriting on the Wall." Tuesday evening the Loyal Sons and Daughters will hold a joint social at the home of Mrs. A. Baker, North Eighteenth street. Thursday at 8 p. m. devotional and Bible study. We are having an interesting Bible study on "Holy Spirit." Everybody welcome. R. L. Putnam, pastor.

First Christian.
Center and High streets, two blocks north of the court house. Bible school at 9:45, with big orchestral features. Sermon and communion at 11 a. m. Christian Endeavor at 7 p. m. and evening worship at 8 p. m. Prayer meeting on Thursday at 7:15 p. m. United circles Friday afternoon at the church. Leland W. Porter, pastor.

State Institutions.
Services at the state institutions Sunday will be held as follows: At 2:30 p. m. Chemawa Indian school, by R. L. Putnam; 3:00 p. m. Girl's Training School, by T. S. Anderson.

St. Paul's Church.
Chemeketa and Church streets, the Rev. Charles H. Powell, B. D., rector. Services for the Sunday after Ascension: At 7:30 a. m. holy communion; 9:45 a. m., church school; 11 a. m., morning prayer and sermon, "Ascension—The Exaltation of Humanity;" 7:30 p. m. evening prayer and address—Some Teachings of Socrates. Mr. Leon Jensen will sing Gounod's "Passe of God" as an offertory solo at the morning service. Everybody welcome.

Catholic Church.
Communion mass at 7:30, high mass and sermon by the pastor, "Ignorance the Cause of Catholic Persecutions," at 10:30. Benediction and sermon by Rev. Father Derouin at 7:30 p. m. Moving pictures at the hall on Friday evening, May 21, for the altar and choir boys' benefit.

Lutheran.
East State and Eighteenth streets. George Koehler, pastor. Sunday school at 10 a. m. Preaching service at 10:30 a. m. Visitors are welcome. There will be no evening service.

First Baptist.
Regular services of the church at 11 o'clock. Sunday school at 10:45. B. Y. P. U. at 7 o'clock. At 2:30 there will be a meeting of the Woman's Missionary society, at which Professor Van Ossell and a delegation of McMinnville students, who attended the convention at Des Moines,

la., will take charge. The object of this meeting is to stimulate life enrollment work among our young people. This delegation will have charge of the regular services of the church at 8 o'clock.

W. C. T. U.
Good Samaritan mission; meeting at the W. C. T. U. hall Sunday, 3:00 p. m. Headquarters at Mrs. Buckbee's home, 156 North Front street.

Tuesday, May 18, will be observed as "Candidate's day" by the W. C. T. U. at their hall. The members will be at home from 3 to 5 to all prospective candidates and be glad to have them call and present their cards. Someone will present the millage measure and Ivan Martin will speak. All women interested in the coming election are cordially invited to be present.

First Baptist.
Sunday school at 9:45 a. m., Prof. H. E. Hewitt, superintendent; classes for all. Morning service, 11 o'clock, Rev. J. C. Tibbets, preacher. Evening service will be conducted by young people from McMinnville college. Those not worshipping elsewhere are invited to these services.

Jason Lee Memorial.
North Winter and Jefferson streets, the Rev. Thomas Acheson, pastor. Sunday school at 9:45. Chas. Hageman, superintendent. Capable teachers are in charge of classes for all ages. Strangers and visitors always welcome. Public worship at 11 a. m. and 8 p. m. In the absence of the pastor, Albert S. Mulligan will preach; morning subject, "Christ Precious;" evening, "Moral Heroism." Class meeting at 12:10, led by J. M. Clark; junior league at 3 p. m., in charge of Miss

Grace Tyler, all children welcome and a profitable time assured. Epworth league at 7 p. m. Special music will be rendered by the choir both morning and evening, under the leadership of Professor Clark. Prayer and praise service Wednesday evening at 8 o'clock. A step toward the church is a step in the right direction.

"DANDERINE"

Stops Hair Coming Out; Doubles Its Beauty.



A few cents buys "Danderine." After an application of "Danderine" you can not find a fallen hair or any dandruff, besides every hair shows new life, vigor, brightness, more color and thickness.

HOLD FAST TO HEALTH With The Mighty Strength-Giving Power of NUXATED IRON



Nothing slips away so easily as HEALTH. Unless YOU hold fast to HEALTH by your own efforts—by keeping your blood pure, red and rich in iron—the day may come when all you can do is WISH you had acted sooner. Nuxated Iron helps strengthen the blood, restores wasted tissue and build red blood, strength and endurance. Over three million people use it annually. At all drugists.

Send me your name and address and I will send you a prospectus of the

SILVER KING MINE

C. Chappell Hotel Bligh Salem, Oregon

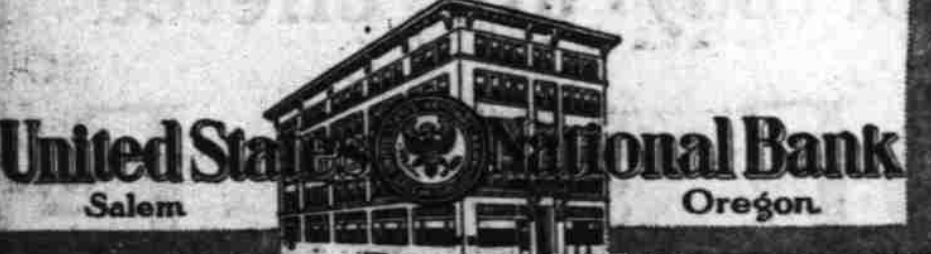
Exide Battery Service



WE GUARANTEE OUR REPAIR WORK FOR 8 MONTHS

R. D. BARTON
171 South Commercial Street
Phone 1107 SALEM

IDLE MONEY DOES NOT PAY A PROFIT
IT'S working money which benefits its owner. When you carry or bury your earnings, you take away its earning power. Money deposited here at the United States National Bank in a Savings Account is really a "hired hand." It works 24 hours a day and pays its wages to you in the way of interest.



RACINE TIRES

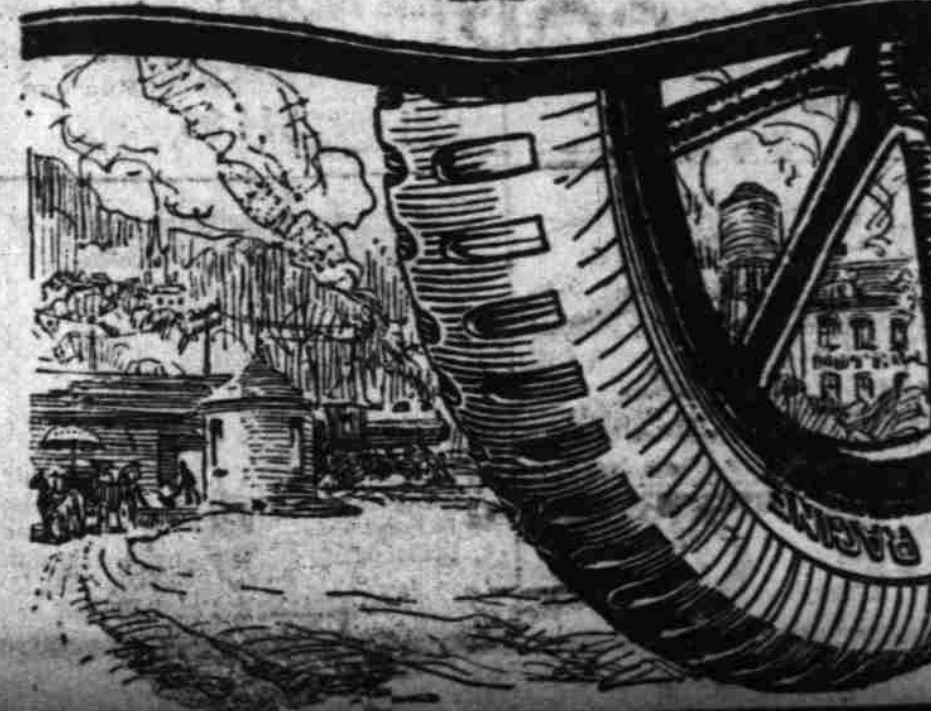
COUNTRY ROAD FABRIC

For Country Rides Built for severe country road service, Racine Country Road Fabric Tires have the Extra Tested quality that means more miles to you—tire economy.

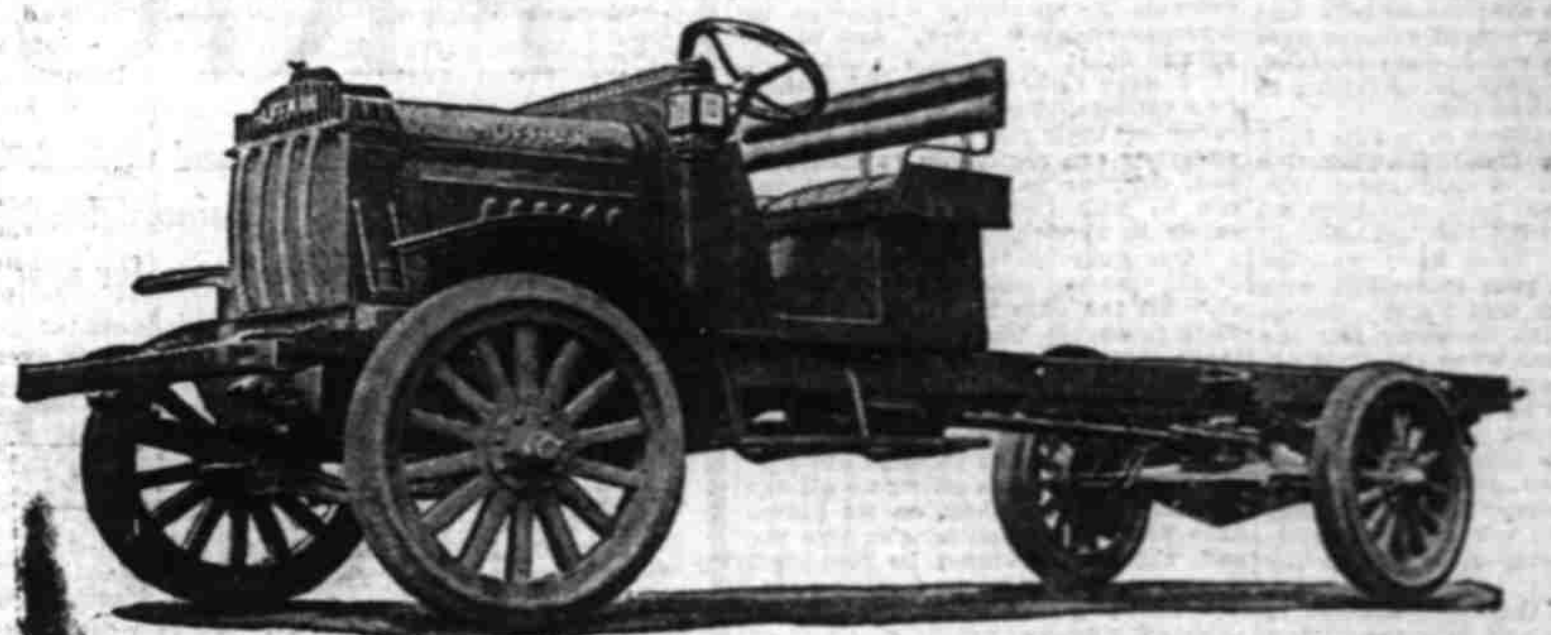
Extra Tested for Extra Miles Plus the Extra Tests, safeguarding quality in Racine Country Road Fabric and Multi-Mile Cord Tires, the Racine Absorbing Shock Strip welding tread and carcass perfectly is an added insurance of extra miles—comfort—economy.

Be sure the name RACINE RUBBER COMPANY is on every tire you buy.

J. B. HILEMAN
Automobile Accessories
291 N. Commercial St. Phone 787 Salem, Oregon



HUFFMAN TRUCKS



F. O. B. Salem, \$1995

The Huffman 5500 pound capacity general utility truck is built for those who are seeking the very highest quality and service. A truck that will give maximum efficiency, stand up under capacity load on long or short hauls and deliver its merchandise with the lowest possible cost per ton mile. Note these Specifications—

- MOTOR**—Model C, 4-cyl. Buda-W. U. Bore and stroke, 3 1/2 inch by 5 1/8 inch. Thermo-Syphon cooling.
- MOTOR**—Model B, 4-cyl. Continental Red Seal. Bore and stroke, 3 1/2 inch by 5 inch. Thermo-Syphon cooling.
- IGNITION**—Elsceimann high tension magneto with automatic impurser, assuring easy starting under most abnormal conditions and prevents as far as possible motor kicking.
- CARBURETOR**—Zenith automatic float type, with hot air quick starting device.
- RADIATOR**—Large cast tank armored radiator, cellular type, mounted on cushions with floating spring suspension. Front provided with triangle steel protection guards and cooling fins.
- CLUTCH**—Fuller adjustable and easily accessible dry disc type.
- TRANSMISSION**—Fuller-unit power plant type. All parts extra heavy and especially designed for truck use. Selective sliding rear, three speeds forward and one reverse. Gears of heat treated nickel steel, case hardened. Extra large annular ball bearings. Center control, ball and socket type.
- DRIVE**—Through two universal joints with 2-inch tubular shaft. Hotchkiss type. Steady bearing positively prevents whipping of drive shaft and eliminates wear on universal joints.
- STEERING GEAR**—Lavinie-screw and nut irreversible type; 1 1/2-inch wheel; left hand drive.
- FRAME**—Straight side type, heat treated, pressed steel channels 3-1/2 inch thick, semi-flexible. Length over all, 21-2 inches; 5 1/2 inches deep, 3 1/2 inches wide. Four heavy, pressed steel cross members. Front cross member removable to afford easy access to motor.
- FRONT AXLE**—I-beam, drop forged, nickel steel heat treated spindles. Timken taper roller bearings throughout.
- REAR AXLE**—Model "C"—Torben heavy duty internal gear drive. Drop forged I-beam form. Spindles, chrome-vanadium alloy steel, heat treated. Easily lubricated and adjustable. Timken taper roller bearings in pinion shaft and differential. Gear ratio, 8 to 1.
- REAR AXLE**—Model "B"—Standard worm drive, special large steel worm, alloy bronze wheel, insuring minimum friction and long wear. Driving shafts of alloy steel, heat treated. One-piece housing of uniform thickness at all points. Combined radial and thrust at each end of worm shaft. Gear ratio, 8 1/2 to 1.
- BRAKES**—Model "C"—Internal expanding and external contracting.
- BRAKES**—Model "B"—Two pairs internal expanding brakes.
- WHEELS**—Heavy artillery truck type, fourteen 2-inch square spokes in rear and fourteen 1 1/2-inch square spokes in front.
- REAR SPRINGS**—Our own specially designed Perfection springs, 50 inches long and 3 inches wide, semi-elliptic, with 11 extra heavy leaves. Each leaf cupped to prevent possibility of shifting, and Clemons bushings in all spring eyes. Spring bolts of special hardened steel, ground and polished. Spring U-bolts of 3/4 per cent non-stretching nickel steel, with spring pads accurately shaped to conform with spring curve, absolutely insures against rear axle shifting and getting out of alignment, and so eliminates rear axle trouble.
- FRONT SPRINGS**—Our own specially designed Perfection springs, 42 inches long, 2 1/2 inches wide, semi-elliptic, with nine heavy leaves and single shackles in rear.
- TIRES**—Firestone, solid tires, 3 1/2 inch rear and 2 1/2 inch front.
- GASOLINE CAPACITY**—Heavy steel tank, 16 gallons, under driver's seat; gravity feed.
- WHEELBASE**—140 inches.
- LOADING SPACE**—10 1/2 feet from rear of driver's seat to end of frame.
- HEIGHT OF FRAME**—50 inches under load.
- TREAD**—56 inches front and rear.
- CHASSIS WEIGHT**—3200 pounds.
- CAPACITY**—5000 to 5500, including body weight.
- EQUIPMENT**—Seat and riser, tool box, tool kit, horn, governor, rear two line hooks, radiator guards, oil side lamps and tail lamp.
- CHASSIS PRICE**—Model "C" with Buda motor, \$1,695; Model "B" with Continental motor, \$1,895. Finished in lead prime. Pneumatic tires, pressed steel bumper, prestolite equipment, open or all-weather closed cabs, army top, bodies, etc., extra at nominal charge. Body building blue prints of chassis construction will be gladly furnished on request.

Huffman Motor Sales Co.

Office 124 South Liberty
State Distributors for Oregon and Idaho
J. E. SCOTT, Manager
Phone 937
P. X. JOHNSON, Sales Mgr.