



## Christmas Shopping with the Kiddies

Does it tire you out? Or do you come home fresh, active and happy after a strenuous day? If only you had comfortable shoes—

That's just it. A woman must wear stylish shoes when she goes out. And who can expect them to be comfortable? Oh, if they only could be!

Well, they can be. Every Red Cross Shoe is wonderfully comfortable, fitting snugly yet bending graciously with every lift and turn of your foot. And in these models that we are showing, there's every new line, every smart feature that one's heart could wish.

Come in and see them and try them on. Your very first step in the one you like best will show you how you can enjoy every busy minute of these happy holidays. The prices range from

\$8.00 to \$14.75

No finer present could be given "her"

At The Electric Sign "SHOES"



Littler & Upmeyer Sole Owners

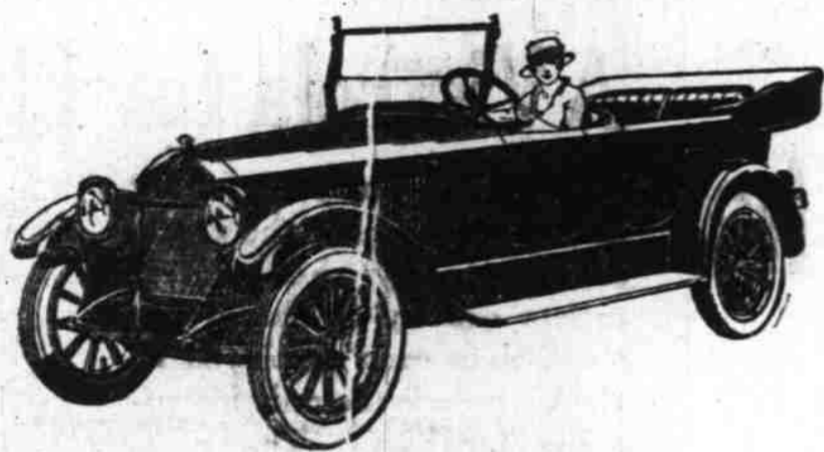
Specially Accredited Red Cross Agency



Chief Clerk—Biffson has asked for another raise, although he's been given three in the last four months. Office Manager—He must have

worked for the railroad administration.—Life. Madge—They say she is very clever,

but I never noticed it. Majorie—Of course not. She says all the clever things about you after you have gone.



The New Studebaker Cars are the final result of the combined experience and genius of the entire Studebaker engineering staff—among the ablest men known to the automobile industry.

They do not represent the untried theories of any one man, but are rather the fruit of the ripened experience of this group of prominent and successful automotive engineers.

The performance of each new car, throughout the gruelling factory test run of 40,000 miles, and in the hands of thousands of thoroughly satisfied owners everywhere, is proof of their mechanical excellence.

Studebaker quality, dominant for 67 years, is reflected in these new models.

What gift could bestow more service, more pleasure, more real contentment and appreciation than a New Studebaker?

The Season's Greetings  
Marion Automobile Company

## CUPPER LISTS WATERED LANDS

Irrigated Area of Oregon Approximates Almost One Million Acres

Oregon has an approximate total of 968,759 acres in irrigated lands. Percy A. Cupper, state engineer, has arrived at this figure in footing up the watered lands, and in the list also has segregated the adjudicated and non-adjudicated lands. While some of the figures given are approximations they are near enough correct to come very near showing the actual irrigated acreage of the state. Of the grand total of 968,759 acres, 476,479 acres is the adjudicated area and 492,280 the non-adjudicated area. The respective lists are shown below:

**Adjudicated Acreage**  
Following is a list of the streams on which the irrigated area has been adjudicated, the figure in each case also being the total irrigated area in acres:

Althouse creek, Josephine county, 479; Anna creek, Klamath county, 8273; Butter creek, Umatilla and Morrow counties, 7712; Crooked river, Crook county, 29,020; Cochran creek, Grant county, 35; Cherry creek, Klamath county 3302; Chewaucan river, Lake county, 34,775; Cottonwood creek, Malheur county, 173; Dugger creek, Umatilla county, 534; Goodman Spring branch, Umatilla county, 202; Grand Ronde river, Union county, 20,299; Johnson creek, Umatilla county 364; Lost river, Klamath county, 5988; Mill creek, Union county, 2035; middle branch of Mud creek, Umatilla county, 472; Malheur river, Malheur county, 42,178; North Powder river, Baker and Union counties, 20,987; Rogue river, Jackson and Josephine counties, 34,188; Squaw creek, Deschutes county, 10,000; south branch of Mud creek, Umatilla county, 445; Sucker creek, Josephine county, 2162; Silvies river, Harney county, 87,566; Tumalo creek, Deschutes county, 8000; Trout creek, Harney county, 4253; Trout creek, Crook and Jefferson counties, 3470; Umatilla river, Umatilla county, 19,700; Willow creek, William and Morrow counties, 6291; Willow river, Malheur county, 8000; west prong Little Walla Walla river, Umatilla county, 563; Walla Walla river, Umatilla county, 5000; Walla Walla river, Walla Walla county, 38,650; east branch of Mud creek, Umatilla county, 552; Neal creek, county not stated, 159; Pauline creek, Deschutes county, 704; Powder river, Baker and Union counties, 70,000; Total, 476,479.

**Non-Adjudicated Area**  
Below is a list of the streams on which the area has not been adjudicated, but where estimated area has been checked up, the figures also being the total irrigated acreage:

Ana river, Lake county, 5000; Burnt river, Baker county, 21,185; Blitzen river, Harney county, 30,000; Ohoco project, Crook county, 10,000; Cherry creek, Jefferson county, 2000; Deschutes river, Deschutes county, 40,000; Fifteen Mile creek, Wasco county, 2500; Goose Lake valley, Lake county, 13,582; Hood river, Hood River county, 18,000; John Day river, Grant and other counties, 60,000; Klamath river, Klamath county, 75,000; Horsefly irrigation district, 5000; Owyhee river, Malheur county, 35,000; Pine creek, Baker county, 10,000; Snake river, county not stated, 15,000; Snow creek and Three Creeks, Deschutes county, 597; Silver creek, Lake county, 11,716; Silver lake, Harney county, 8000; White river, Wasco county, 2000; Warner valley, Lake county, 18,000; other streams including Willamette river and coast counties, 50,000; certificates under permits, 60,000. Total, 492,280. Grand total irrigated lands in Oregon, 968,759.

## REALTY MARKET WILL PICK UP

Present Slow Period Is Attributed Mainly to Weather Conditions

Ask any dealer in real estate in this city "How is business," and the will likely draw in a moment, dejected tone the one word, "Slow." They say there is no lessening of interest in city and far properties on the part of prospective buyers. But it simply has been out of the question to show properties to advantage.

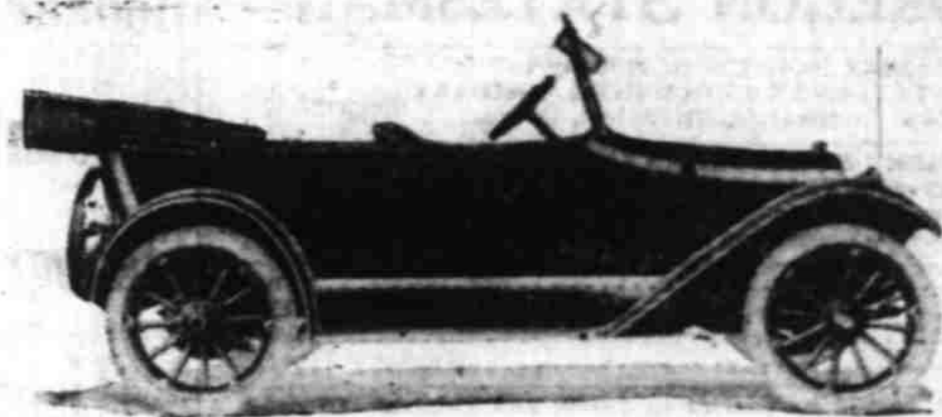
All express confidence, however, that business in the real estate market will pick up with the return of normal weather conditions. Asked whether land values have been advanced of late, one of the leading realtors said that no material increase in farm quotations have been noted recently. The average price he believes, has remained stationary, but with the approach of spring, he would not be surprised to see the market take a favorable turn upward. He recognized the fact that a very large amount of all kinds of real property is now on the market. This will go far toward steadying the market.

## Hop Yard to be Planted on Estate of Seid Beck

Fifteen acres of hops will be planted next spring by Lope Sing on the land owned by the Seid Beck estate near Independence. There is already a large acreage of hops on this property.

Lope sing says that 50 cents a pound is now being offered for next year's crop and 40 cents for each of the two years following can be obtained on contract.

"But I no contract," said the veteran hop man.



## Model 490, 5 Passenger \$857.20

F. O. F. SALEM, INCLUDING NEW IMPROVEMENTS

## A Christmas Present for the Whole Family

Make your family a Christmas present of an automobile.

It's a present that will give every member of your family pleasure and comfort.

It's a present that will endure—a present that your whole family can enjoy together.

And make your selection a CHEVROLET—a car of established reputation and proved value—in which you will get added value in the assurance of ever-ready, courteous and dependable local service.

## Salem Automobile Co.

F. G. DELANO SALEM

A. I. BOFF DALLAS

## Maxwell is but another name for Quality

THE goodness, the efficiency, the quality in previous Maxwells created a demand for the current Maxwell which 100,000 cars (the number now being built)



100,000 axles is constructed. Consider the vast use of capital it requires to turn them out—300 a day.

This shows a rare liking for Maxwell; and the appreciation that every dollar devoted to its manufacture has been wisely expended.

Think what the making of 100,000 axles means, the making of 100,000 frames, 100,000 engines, 100,000 clutches, and 100,000 transmissions.

Think of the great saving that comes with the purchase of so many materials.

Consider the accuracy that follows as one after another of

Estimate the confidence the Maxwell executives had in the Post-War model to rest the future of the Maxwell name on a year's production like 100,000.

They knew; 300,000 previous Maxwells had told them; the public was their judge.

You can look for high engine efficiency, or merely comfort, or long mileage on gas and tires, or improvements the war developed, or style, or value—you'll find it in the Post-War Maxwell.

Price, \$985 f.o.b. Detroit.

OSCAR B. GINGRICH MOTOR & TIRE CO. 371 Court Street SALEM, OREGON

