

# These Local People Are Using Denby Motor Trucks

GREER LUMBER COMPANY, Falls City  
FISHER FLOURING MILLS, Silverton  
JOHN WITTHYCOMBE, M. L. Jones Ranch

G. W. SENN, Brooks, Oregon  
OBERSON TRANSFER COMPANY, Independence  
SALEM FUEL YARDS, Salem

C. E. TIMME, TRANSFER, Salem  
CAPITAL CITY TRANSFER COMPANY, Salem  
LARMER TRANSFER COMPANY, Salem

**ASK THESE OWNERS What They Think of DENBY---Then See Us**

## 1TON

A one-ton truck that combines the sturdiness and long life of the heavy-duty truck with the speed and low operating cost necessary in this class of hauling.

### SPECIFICATIONS MODEL 12

Body allowance—900 pounds.  
Total Capacity—2900 pounds.  
BODY LENGTH—9 feet.  
FRAME BACK OF SEAT—95 in.  
WHEELBASE—124 inches.  
TURNING RADIUS—25 feet.  
ROAD CLEARANCE—12 inches.  
MOTOR—4 Cylinder, Unit Power Plant, 3 point suspension.  
BRAKE HORSEPOWER—At governor speed (1300 r.p.m.) 25.  
FRAME—Pressed Steel, 4½ in. deep x 4 in. wide x 3-16 in. thick.  
SPRINGS—Front 44 x 2¼ in. rear 48 x 2½ in.  
AXLES—Front, I-beam, drop forging; rear internal gear, load carried on solid round axle. Gear ratio 8.2 to 1.  
BRAKES—Internal expanding and external contracting, 14 in. drums.  
WHEELS—Wood, heavy duty, artillery type.  
TIRES—Standard, Goodrich; Optional, Firestone; front 34 x 3 in., rear 34 x 4 in. single. 34 x 3 in. dual optional at extra cost. 35 x 5 Pneumatic Tires mounted on Demountable Rims can be furnished at additional cost; also demountable solid at additional cost.  
SPEED—16 miles per hour.

## 2TON

A medium size truck with an extra strength in every part and a thorough construction, that makes it ideal for a wide range of work.

### SPECIFICATIONS MODEL 13

CAPACITY—4000 pounds.  
Body Allowance—1200 pounds.  
LENGTH OF FRAME BACK OF SEAT—129 inches.  
WHEEL BASE—144 inches.  
BODY LENGTH—11 feet.  
TURNING RADIUS—28 ft. 6 in.  
ROAD CLEARANCE—12 inches.  
MOTOR—4 Cylinder, Unit Power Plant, 3 point suspension.  
BRAKE HORSEPOWER—At governor speed (1275 r.p.m.) 29.  
FRAME—Pressed Steel—5½ in. deep x 4 in. wide x ¼ in. thick.  
SPRINGS—Front 44 x 2¼ in. rear 52 x 3 in. wide.  
AXLES—Front, I-beam, drop forging; rear internal gear, load carried on solid round axle. Gear ratio 9.8 to 1.  
BRAKES—Internal expanding and external contracting, 16½ in. drums.  
WHEELS—Wood, heavy duty, artillery type.  
TIRES—Standard, Goodrich; Optional, Firestone; front 36 x 3½ in., rear 36 x 6 in. single. 36 x 3½ in. dual optional at extra cost. Demountable type at additional cost.  
SPEED—14 miles per hour.

## 3TON

Like all Denby Trucks it has the power, flexibility and high road clearance for the hardest going and the economy and low power losses that give minimum delivery cost.

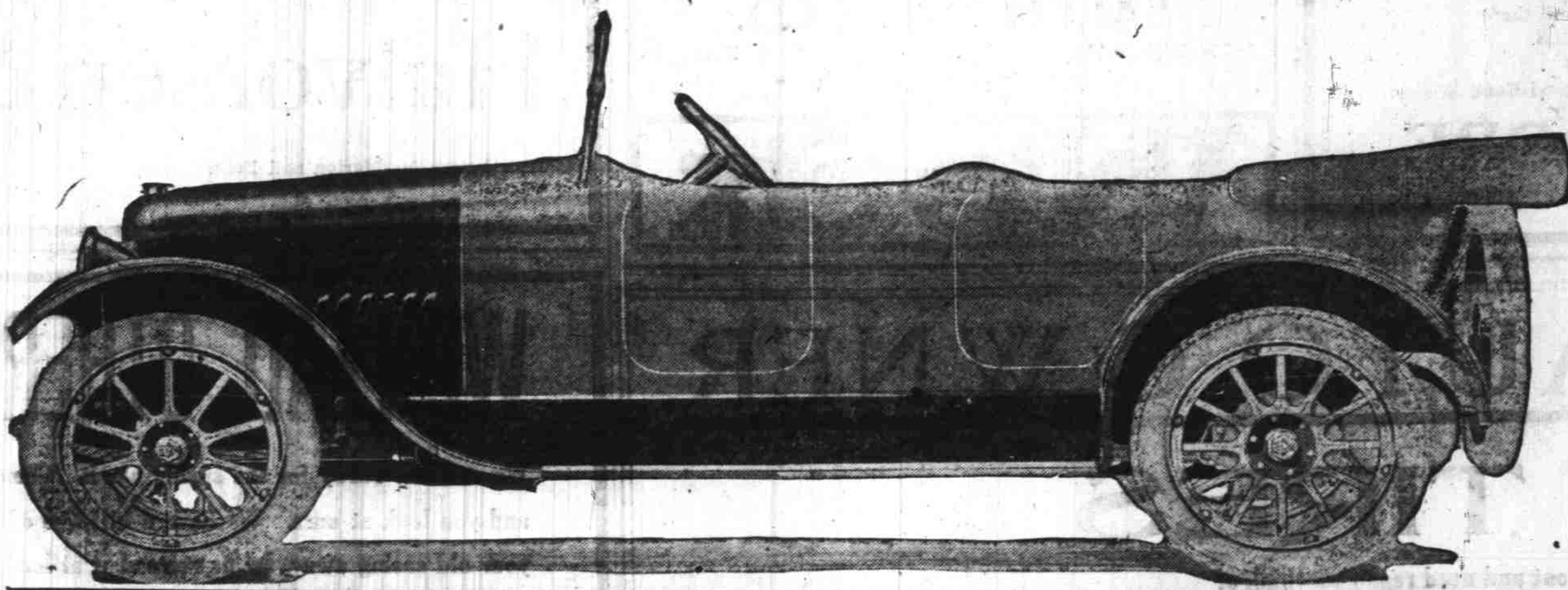
### SPECIFICATIONS MODEL 15

CAPACITY—6000 pounds.  
Body allowance—1500 pounds.  
LENGTH OF FRAME BACK OF SEAT—129 inches.  
BODY LENGTH—12 feet.  
WHEEL BASE—144 inches.  
TURNING RADIUS—28 ft. 6 in.  
ROAD CLEARANCE—13 inches.  
MOTOR—4 Cylinder, Unit Power Plant, 3 point suspension.  
BRAKE HORSEPOWER—At governor speed (1275 r.p.m.) 29.  
FRAME—Pressed Steel—5½ in. deep x 4 in. wide x ¼ in. thick.  
SPRINGS—Front 44 x 2¼ in. rear 54 x 3½ in.  
AXLES—Front, I-beam, drop forging; rear internal gear, load carried on solid round axle. Gear ratio 10.9 to 1.  
BRAKES—Internal expanding and external contracting, 18 in. drums.  
WHEELS—Steel.  
TIRES—Standard, Goodrich; Optional, Firestone; front 36 x 4 in., rear 36 x 7 in. single. 36 x 4 in. dual Goodrich or Firestone, or 36 x 7 single Firestone Giant optional without extra cost. Demountable type at additional cost.  
SPEED—12½ miles per hour.

**LET US DEMONSTRATE TO YOU WHAT THESE TRUCKS WILL DO**  
**OREGON MOTOR CAR CO.**

FERRY AND HIGH STREETS,  
SALEM, OREGON, Phone 121

Distributors Studebaker Cars and Denby Trucks



## ELGIN SIX, "the Car of the Hour"

\$1250 at Salem.

4-Passenger Roadster.

5-Passenger Touring.

### Distinction and Comfort

The Elgin Six is the only car selling for less than \$1250 which has the fashionable center cowl and the "V" type radiator of the high-priced European models. Its beautiful yacht line design was established by a famous artist and gives the Elgin Six a style and distinction that set it apart from the monotonous design of the average car.

Elgin engineers have perfected an improved rear spring suspension, found only in the Elgin Six, which sets a new standard of motoring ease and comfort at high speeds, reducing shock and vibration to a point not surpassed in any car at any price.

The special construction of the Elgin velvet-acting clutch enables the Elgin Six to be started on high gear, eliminating to a large degree the necessity of gear shifting, under ordinary conditions, thus removing the last barrier to the safe and easy handling of a motor car by women.

### Endurance and Economy

The Elgin Six, now in its fourth triumphant year, has stood "The Acid Test" by winning perfect scores and highest honors in some of the most grueling endurance and economy runs of the past year.

Three Elgin Sixes, on a hard two days' run, under the auspices of the Chicago Motor Club, made perfect scores and averaged 25.6 miles to the gallon of gasoline.

The Elgin Six has established a new record of 1626 car-racking stamina-testing miles in 67½ hours between Chicago and Miami, Fla., over the steep, rocky mountain grades of Kentucky and Tennessee, the heavy sands of Georgia, and the slimy, treacherous swamp roads of Florida.

Many other remarkable Elgin performances have firmly established the Elgin as a Mechanical Masterpiece and the champion for long-sustained speed, endurance and economy.

**ELGIN MOTOR CAR CORPORATION, CHICAGO, U.S. A.**

**L. D. GILBERT** Distributor for Marion, Polk, Washington, Yamhill and Tillamook Counties  
156 SOUTH COMMERCIAL STREET, SALEM, OREGON.

Dealers Write for Open Territory.

J. S. HANSON, Sales Manager.