

# Brothers Automobiles Since 1915



...ers have brought to bear upon the manufacture of everything that tends to produce value—extraordinary immense production capacity, complete financial... that rigid insistence upon unerring accuracy has been acknowledged as the chief characteristic of all their work.

**DODGE BROTHERS**

figures will be more greatly appreciated when one remembers that the three years just before the war, while auto sales were steadily increasing, did not begin to approximate the volume shown in the last year of the war, and the two following.

The present Walther-Williams establishment covers over 100,000 square feet. This includes the main office and main sales room, the implement and heavy hardware building and the garage and repair shops in connection with the latter. In addition, there is a large warehouse on First street, between Federal and Washington, and the sales branch office at Bend.

The Walther-Williams company has been largely successful under the practical application of that overworked term, "service" in its truest sense—service of the most complete, all embracing kind, to motorists.

Cars, tires and accessories, to be included in the stocks of the Walther-Williams company, have to be good have to be the best in fact—reliable products of proven standard which the company knows will give satisfaction. Likewise, the company has spared no pains or expense in



**GEORGE E. WALTHER**  
Salesmanager, Heavy Hardware Department

getting the best mechanics and other employes in the maintenance departments, and every effort is made to do the very best possible on every job. Finished work in every respect is the motto.

E. M. Williams, president of the corporation, is a leading and active figure in the business life of The Dalles. He is president of A. M. Wil-

liams & Co., and also president of the First National bank. Mr. Williams was born in The Dalles.

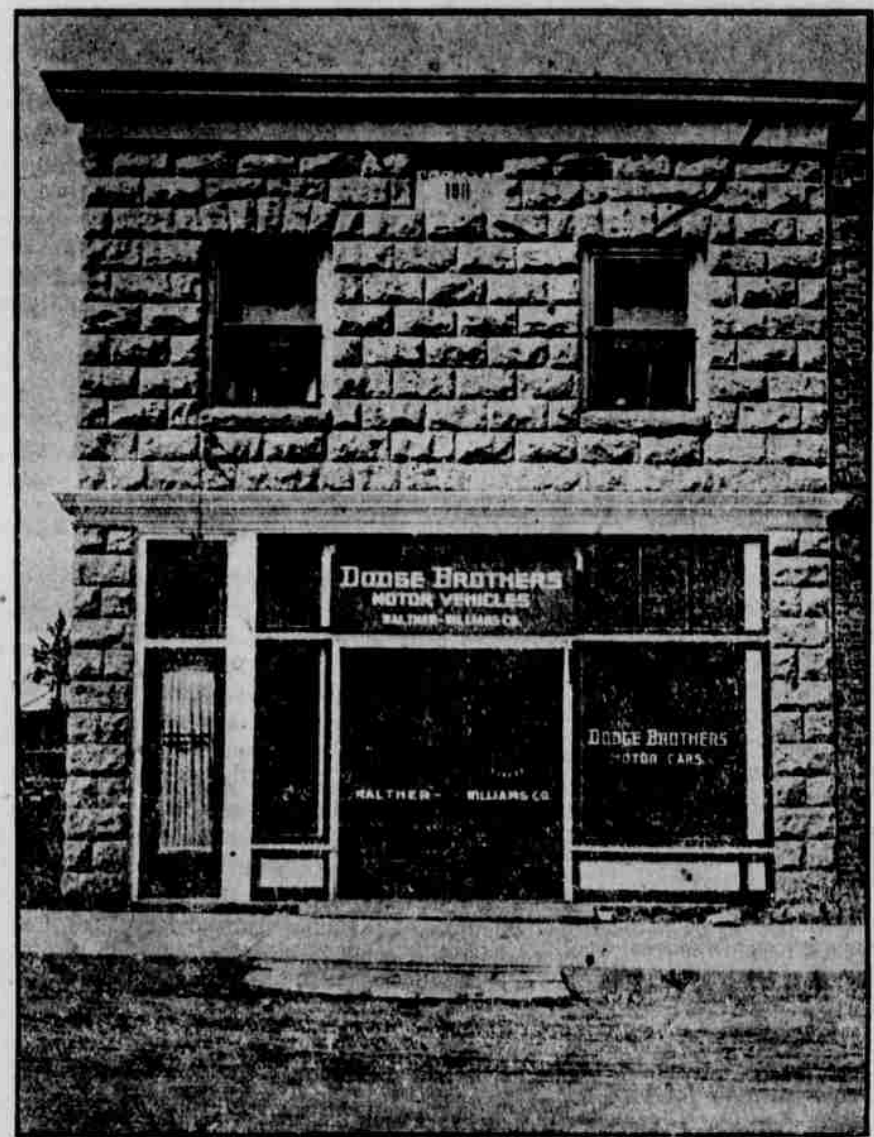
W. E. Walther has been in The Dalles since 1888. He is vice-president and general manager, actively in touch with the business all the time. His unflagging vigor and business acumen have been responsible in a large measure for the growth of the firm.

His son, Harry E. Walther, and nephew, George E. Walther, are associated in the management of the corporation. George E. Walther is sales manager of the agriculture and heavy hardware departments.

Harry E. Walther is sales manager of the automobile side, and he is also in charge of garage end of the business.



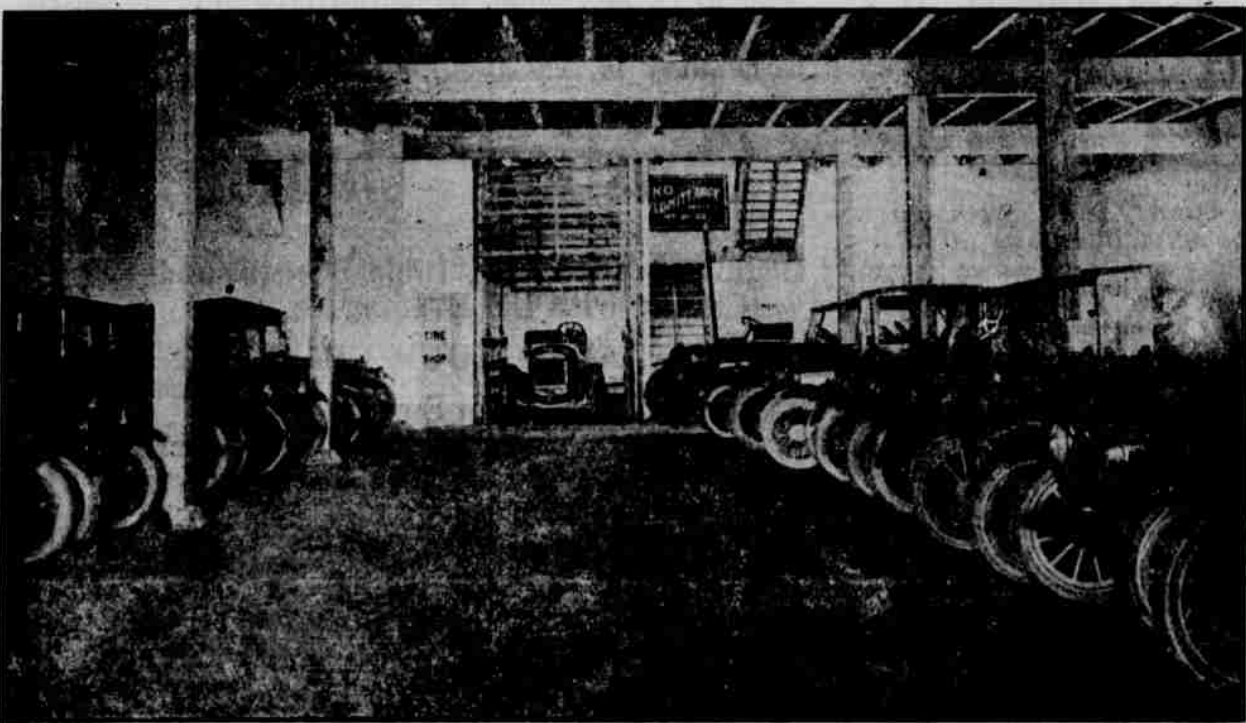
**E. M. WILLIAMS**  
President



Salesroom at Bend



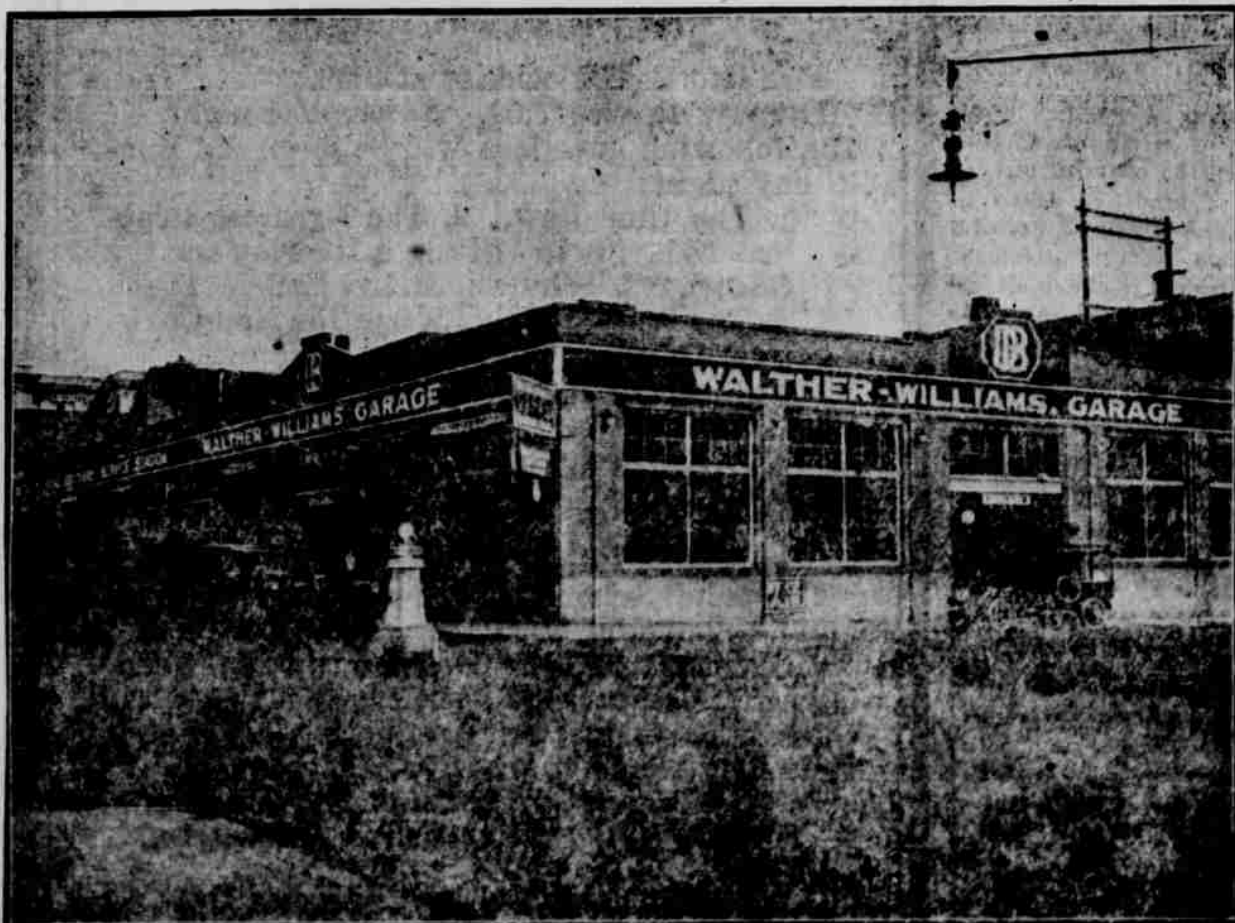
Parts Department, on Second Floor of Garage



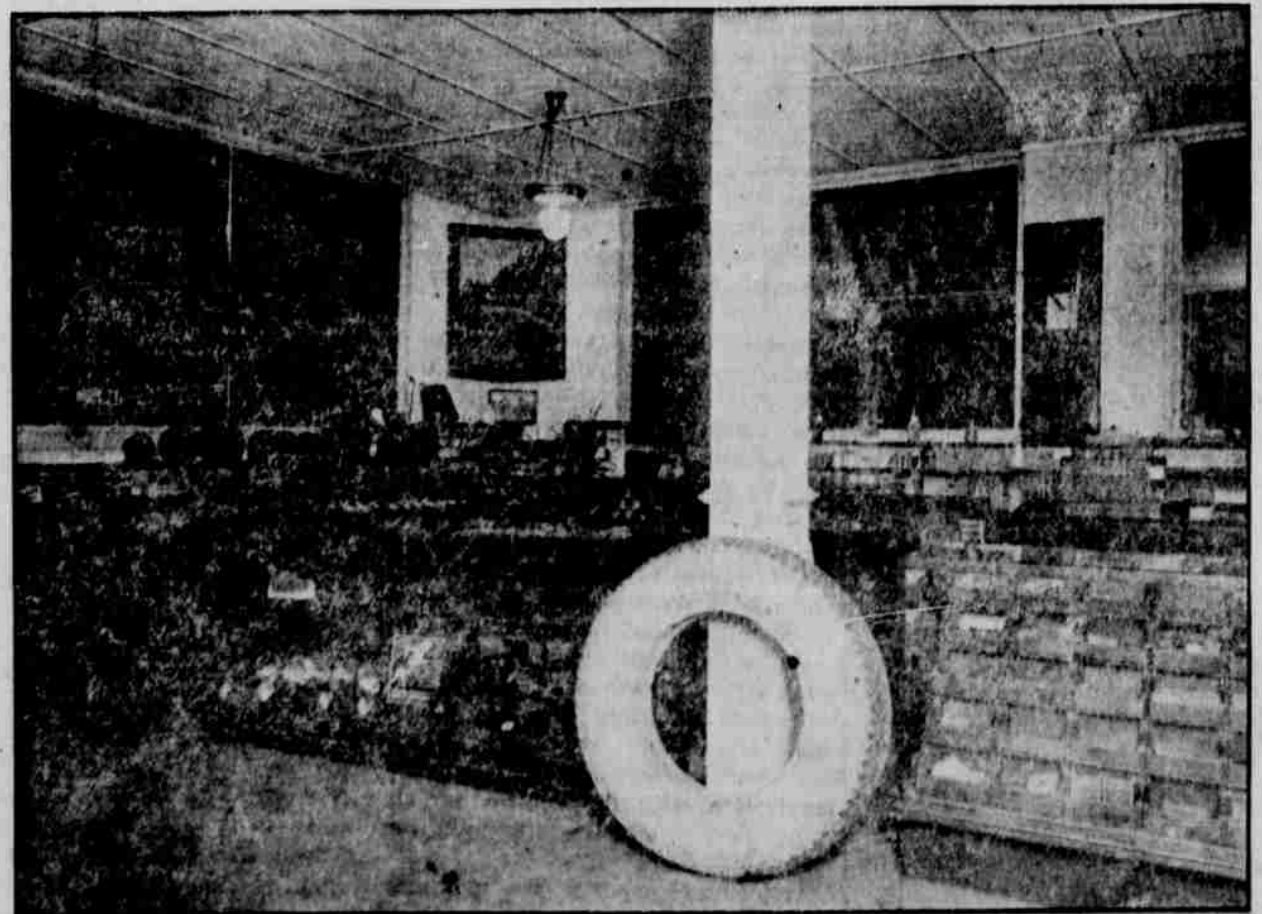
Showing the Garage Storage Facilities



Ladies' Rest Room in Garage Building



Exterior View of Garage and Machine Shop



Accessories and Salesroom in Garage