



I have just received a fine line of **Woolens in Suitings, Overcoatings and Pantings**, and will be pleased to have you call and see them.

**J. A. Eberle, Fine Tailoring.**

**The Dalles Daily Chronicle.**

**SUBSCRIPTION PRICE.**  
 One week ..... \$ 15  
 One month ..... 50  
 One year ..... 6 00

**TUESDAY - - - JULY 25, 1899**

**AN ENGLISH VICTORY.**

Oxford and Cambridge athletes were victorious by a narrow margin over the representatives of Yale and Harvard in the events at Queen's field in a most sportsmanlike contest, but the victory can not be called a sweeping one. The visitors were handicapped by the change of climate and water, the strange field and the introduction of the three mile run, for which they were unprepared, yet they made an excellent showing against the flower of college athletes in Great Britain. Yale and Harvard athletes are not the fastest collegians in America this year. In fact, of the four great colleges which make pretensions to representative championships, they are weaker combined than Pennsylvania. It is highly probable that Pennsylvania alone could defeat the Englishmen with little trouble. Kraenzlin, the famous athlete of Pennsylvania, could be depended upon to win the hurdles, the high jump and broad jump, and there are others in his college who could more than hold their own in other events. In the recent intercollegiate games between American college athletes Pennsylvania scored more points than the second and third colleges combined, her nearest competitor having less than one-half the points of Pennsylvania.

No true sportsman desires to take from the glory of the English athletes. They were most gentlemanly in their treatment of American cousins before the struggle, during the progress of the games and after their conclusion, but they did not defeat All-America by any manner of means. The contests were between virtually All England collegiates and only two American colleges. The entire affair, however, has been productive of the best of feeling and probably will lead to international amateur athletics of a more general character.

It is gratifying to note that the use of American flour abroad has reached its high-water mark in the fiscal year just closed with an exportation of 18,000,000 barrels. The average price per bushel of wheat exported during the year was 74 7/8c. and the average price per bushel for the wheat exported in the form of flour was 87.67c., calculating that 4 1/2 bushels of wheat are utilized in the production of a barrel of flour. This adds 12.9c. to the amount of money received for each bushel of wheat sent abroad in this form, thus making over \$10,000,000 during the year as a compensation to the American labor which transformed the 80,000,000 bushels of grain into the 18,000,000 barrels of flour exported during the year.

Mr. James Creelman is a mysterious sort of person. A few weeks ago he was performing alleged wonders as a correspondent at Manila, using

carrier pigeons, and anticipating the news of the current day for the American breakfast table. Now Mr. Creelman is out in a statement that "Gen. Otis' conditions for press dispatches were so outrageously unfair that I and other correspondents, too, refused to send anything, preferring not to send a lot of lies." The papers that printed so-called Creelman dispatches seem to have filled the vacuum with devices of their own, singing his name to them, though he was sending nothing, as he states himself. Mr. Creelman thinks Otis should have attacked Aguinaldo instead of trying to avoid hostilities; that Otis is incompetent and a military blunderer, and as a censor of newspaper sensation simply unendurable. In a word, the United States has missed a great opportunity by not putting Creelman in command instead of Otis.

**Lost.**  
 Three horses June 16, 1899, described as follows: two weighing about 1400 each. One a light chestnut branded D on left shoulder. Black horse branded C on left shoulder. One bald faced sorrel weighing about 1200; roached mane. A liberal reward for information of the whereabouts, or the return of same. A. MASON, J. BAYS, Contractors, Viento, Or., or E. V. HUSBAND, Mosier, Or. [28-1m]

A diseased stomach surely undermines health. It dulls the brain, kills energy, destroys the nervous system, and predisposes to insanity and fatal diseases. All dyspeptic troubles are quickly cured by Kodol Dyspepsia Cure. It has cured thousands of cases and is curing them every day. Its ingredients are such that it can't help curing. Snipes-Kinersly Drug Co.

You can't cure dyspepsia by dieting. Eat good, wholesome food, and plenty of it—Kodol Dyspepsia Cure digests food without aid from the stomach, and is made to cure. Butler Drug Co.

**Cash in Your Checks.**  
 All county warrants registered prior to August 1, 1895, will be paid at my office. Interest ceases after June 9, 1899.  
 C. L. PHILLIPS,  
 County Treasurer.

"Harmony" Whiskey.  
 Harmony whiskey for family and special use, sold by Ben Wilson, The Dalles.

Ask your grocer for Clarke & Falk's pure concentrated flavoring extracts. If

**A Beautiful Skin.**

Ladies, if you desire a transparent, clear and fresh complexion use Dr. Bourdon's French Arctic Cream on your face. Their effect is simply magical, possessing the wizard touch in producing and preserving a beautiful transparency and perfect clearness of complexion, simply colour of form, brilliant eyes, soft and smooth skin where the reverse exists. Even the coarsest and most repulsive skin, marred by freckles, moths, blackheads, pimples, vulgar redness, yellow and muddy skin, impermanently removed, and a deliciously clear and refined complexion assured.  
 Price per small box, 50 cents; large box, \$1.00; six large boxes, \$5.00. Sent to any address post paid and under plain wrapper upon receipt of the above amount. Write for free circular.

**The Parisian Drug Co.,**  
 131 Montgomery St., San Francisco Cal.

**ST. MARY'S ACADEMY.**

Under the direction of the Sisters of the Holy Name of Jesus and Mary.

**THE DALLES, - - OR.**

This institution is pleasantly situated near the Columbia on the line of the Union Pacific; hence it is easy of access for all those who desire to secure a comfortable home and a progressive seat of learning for their daughters or wards. The location of the Academy is one of the most healthy on the Pacific slope, this portion of Oregon being proverbial for its pure water, embracing air and picturesque scenery. The Academy is incorporated and authorized by the State to confer Academic honors.  
 Board and tuition per scholar: Year \$100. Studies will be resumed Tuesday, September 5th. For detailed information apply to the Sister Superior. 1154-2m

**PROFESSIONALS.**

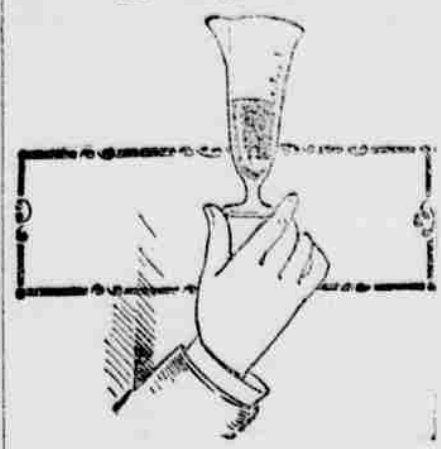
**H. A. STURDEVANT,**  
 Dentist.  
 Office over French & Co.'s Bank  
 Phone 6, THE DALLES, OREGON

**DR. GEISENDORFFER**  
 Physician and Surgeon,  
 Special attention given to surgery.  
 Rooms 21 and 22. Tel. 328. Vogt Block

**FRED. W. WILSON,**  
 ATTORNEY-AT-LAW,  
 THE DALLES, OREGON.  
 Office over First Nat. Bank.

**H. H. HUNTINGTON** and **H. W. WILSON**  
 HUNTINGTON & WILSON,  
 ATTORNEYS AT LAW,  
 THE DALLES, OREGON  
 Office over First Nat. Bank

**A good drug sign.**

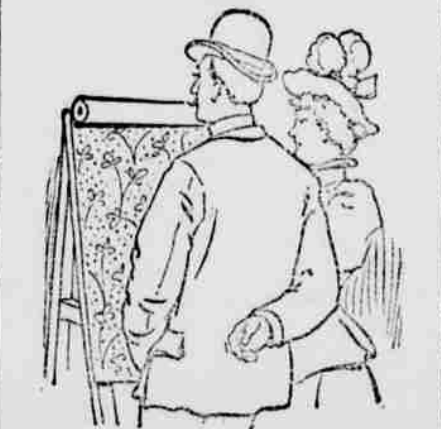


You well know that a good drug sign is the patronage which is bestowed on the store. It is the purity of the goods handled and the manner of doing business that makes and keeps this business. We are pleased with the result of our efforts to supply the best drugs at the best price. We are particular about the compounding of them.

**Blahley & Houghton**

RELIABLE PHARMACISTS.  
 175 Second Street. THE DALLES

**Just What You want.**



New ideas in Wall Paper here. Such wide variety as we are showing never before graced a single stock. Real imitation creton effects at ordinary prices. Good papers at cheap paper prices. Elegant designs, tasteful colorings, yours for a small price, at our store on Third street. Also a full line of house paints.  
**D. W. VAUSE, Third St.**

**EAST and SOUTH via The Shasta Route**

—OF THE—  
**Southern Pacific Comp'y.**

Trains leave and are due to arrive at Portland.

LEAVE	OVERLAND EXPRESS, Salem, Roseburg, Ashland, Seaside, Medford, San Francisco, Mojave, Los Angeles, El Paso, New Orleans and East	9 A. M.
6:30 P. M.	Roseburg and way stations.	
9:30 A. M.	Via Woodburn for Madras, Silverton, West Slope, Brownsville, Springfield and Natron	Daily except Sundays
17:30 A. M.	Corvallis and way stations	5:50 P. M.

**INDEPENDENT PASSENGER.** Express train Daily (except Sunday).  
 4:50 p. m. (Lv. Portland, Ar.) 8:25 a. m.  
 7:30 p. m. (Ar. McMinnville, Lv.) 5:50 a. m.  
 8:30 p. m. (Ar. Independence, Lv.) 4:50 a. m.

\*Daily. (Daily, except Sunday).  
**DINING CARS ON OGDEN ROUTE.**  
**PULLMAN BUFFET SLEEPERS AND SECOND-CLASS SLEEPING CARS** Attached to all Through Trains.  
 Direct connection at San Francisco with Oceanic and Oriental and Pacific mail steamship lines for JAPAN and CHINA. Sailing dates on application.  
 Rates and tickets to Eastern points and Europe. Also JAPAN, CHINA, HONOLULU and AUSTRALIA.  
 All above trains arrive at and depart from Grand Central Station, Fifth and Irving streets.  
**YAMHILL DIVISION.**  
 Passenger Depot, foot of Jefferson street.  
 Leave for Sheridan, week days, at 4:30 p. m. Arrive at Portland, 9:30 a. m.  
 Leave for AIRLIE on Monday, Wednesday and Friday at 9:40 a. m. Arrive at Portland, Tuesday, Thursday and Saturday at 3:05 p. m.  
 \*Except Sunday. \*\*Except Saturday.  
 R. K. ELLER, G. H. MARKHAM, Manager, Asst. G. F. & Pass. Agt.  
 Through Ticket Office, 134 Third street, where through tickets to all points in the Eastern States, Canada and Europe can be obtained at lowest rates from  
 J. B. KIRKLAND, Ticket Agent, or N. WHEALDON.

**NERVITA** known as VITALITY, LOST VIGOR, AND MANHOOD

Cures Impotency, Night Emissions and wasting diseases, all effects of self-abuse, or excess and indigestion. A nerve tonic and blood builder. Brings the pink glow to pale cheeks and restores the fire of youth. By mail 50c per box; 6 boxes for \$2.50; with a written guarantee to cure or refund the money.  
**NERVITA MEDICAL CO.**  
 Clinton & Jackson Bldg., CHICAGO, ILL.

**O. R. & N.**

PART FOR	TIME SCHEDULE FROM DALLES.	ARRIVE FROM.
Fast Mail 11:50 p. m.	Salt Lake, Denver, Ft. Worth, Omaha, Kansas City, St. Louis, Chicago and East.	Fast Mail 5:15 p. m.
Spokane Flyer 5:40 p. m.	Walla Walla, Spokane, Minneapolis, St. Paul, Duluth, Milwaukee, Chicago and East.	Spokane Flyer 5:00 a. m.
8 p. m.	FROM PORTLAND, Ocean Steamships. For San Francisco—January 22, and every five days thereafter.	4 p. m.
8 p. m. Ex. Sunday	Columbia Rv. Steamers To ASTORIA and Way Landings.	4 p. m. Ex. Sunday
6 a. m. Ex. Sunday	WILLAMETTE RIVER, Oregon City, Newberg, Salem & Way Landings.	4:30 p. m. Ex. Sunday
7 a. m. Tues, Thurs. and Sat.	WILLAMETTE AND YAMHILL RIVERS, Oregon City, Dayton, and Way Landings.	3:30 p. m. Mon., Wed. and Fri.
6 a. m. Tues, Thurs. and Sat.	WILLAMETTE RIVER, Portland to Corvallis, and Way Landings.	4:30 p. m. Tues, Thurs. and Sat.
1/2 Riparia daily	SNAKE RIVER, Riparia to Lewiston.	LEAVE LEWISTON daily

Parties desiring to go to Heppner should take No. 4, leaving The Dalles at 5:30 p. m. making direct connections at Heppner Junction. Returning making direct connection at Heppner Junction with No. 1, arriving at The Dalles at 4:15 p. m.  
 No. 21, through freight, east bound, does not carry passengers; arrives 2:50 a. m., departs 3:50 a. m.  
 No. 21, local freight, carries passengers, east bound; arrives 4:30 p. m., departs 5:15 p. m.  
 No. 21, west bound through freight, does not carry passengers; arrives 8:15 p. m., departs 9:30 p. m.  
 No. 22, west bound local freight, carries passengers; arrives 5:15 p. m., departs 5:30 a. m.  
 For full particulars call on O. R. & N. Co.'s agent The Dalles, or address  
 W. H. HURLBERT,  
 Gen. Pas. Agt., Portland, Or.

**NORTHERN PACIFIC RY.**

**PULLMAN SLEEPING CARS**  
**ELEGANT DINING CARS**  
**TOURIST SLEEPING CAR**

TO  
 ST. PAUL  
 MINNEAPOLIS  
 DULUTH  
 FARGO  
 GRAND FORK  
 CROOKSTON  
 WINNIPEG  
 HELENA and BUTTE

**Through Tickets**  
 CHICAGO  
 WASHINGTON  
 PHILADELPHIA  
 NEW YORK  
 BOSTON AND ALL POINTS EAST and SOUTH

For information, time cards, maps and tickets, call on or write to  
 W. C. ALLAWAY, Agent,  
 The Dalles, Oregon

**Santa Fe Route**

Offers travelers choice of the following routes east. They are all famous for their scenic attraction.  
 O. R. & N. view Ogden and Denver.  
 Shasta Route view Sacramento, Ogden and Denver.  
 Shasta Route view Sacramento, Los Angeles and Albuquerque.  
 A daily line of through PULLMAN PALACE and TOURIST SLEEPER, from San Francisco and Los Angeles to Chicago. This is

**The Short Line To the East.**

Apply to the agents of the O. R. & N. Co. or the undersigned, for folders and descriptive literature.  
 J. J. DEVEREUX,  
 Gen. Agt. Worcester, Bldg. Portland, Or.

It will be our aim to carry a **Complete Line of the Purest Drugs.**

And we invite your attention to our stock of  
**PAINTS, OILS, GLASS AND WALL PAPER.**  
**BUTLER DRUG COMPANY,**  
 Successor to Snipes-Kinersly Drug Co.

**C. J. STUBLING**

Wholesale and Retail  
**Wines, Liquors and Cigars.**  
 Agency for the Greatest American Liquor  
**Yellowstone Sour Mash Whiskey.**  
 WHISKEY from \$2.75 to \$6.00 per gallon. (4 to 16 years old.)  
 IMPORTED COGNAC from \$7.00 to \$12.00 per gallon. (11 to 20 years old.)  
 A LICENCIA FRANCES from \$5.25 to \$6.00 per gallon. (4 to 11 years old.)  
**ONLY THE PUREST LIQUORS SOLD.**

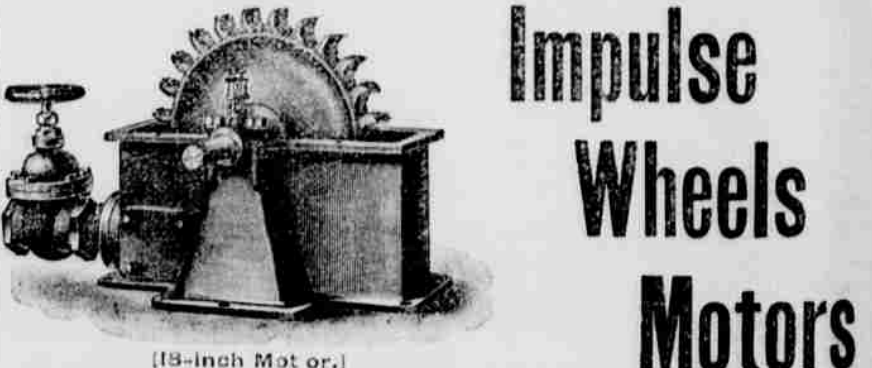
OLYMPIA BEER on draught, and Val Blatz and Olympia Beer in bottles Imported Ale and Porter.

**JOBBERS IN IMPORTED and DOMESTIC CIGARS.**

**THE DALLES STEAM LAUNDRY.**

Dewey white wash? Yes, and wash white. You can Havana thing washed at the Steam Laundry. The Maine point is quality and the Merritt of our work is such that people go Miles to patronize us. Our prices are not Hobson's choice, but the standard rates, which are not Cevera high as some people think, and we want to C-U-B-A customer of ours.

Corner of First and Court Street,  
 Phone 341. THE DALLES, OR.



**AMERICAN IMPULSE WHEEL CO.**

SUITABLE FOR DRIVING  
**GENERATORS AND STAMP MILLS, ELEVATORS, PRINTING PRESSES, ETC.**  
 Circulars and particulars furnished on application.  
**F. S. GUNNING, Agent,**  
 THE DALLES, OREGON

**PIONEER BAKERY.**

I have re-opened this well-known Bakery, and am now prepared to supply everybody with Bread, Pies and Cakes. Also all kinds of Staple and Fancy Groceries.  
**GEORGE RUCH, Pioneer Grocer.**

**Grandall & Burget**

DEALERS IN  
 All kinds of **FUNERAL SUPPLIES**  
**UNDERTAKERS EMBALMERS**  
 Robes, Burial Shoes Etc.  
 The Dalles, Or.