



Colic, Cholera and Diarrhoea Remedy.
I was taken very badly with flux and procured a bottle of this remedy. A few doses of it effected a permanent cure. I take pleasure in recommending it to others suffering from that dreadful disease.—J. W. LYON, Dorr, W. Va. This remedy is sold by Blakeley & Houghton, never been claimed that Chamberlain's Pain Balm would cast out demons, but it will cure rheumatism, and hundreds bear testimony to the truth of this statement. One application relieves the pain and this quick relief which it affords is alone worth many times its cost. For sale by Blakeley & Houghton.

I have just received a fine line of Wo l en s in Suitings, Overcoatings and Pantings, and will be pleased to have you call and see them.

J. A. Eberle, Fine Tailoring.

The Dalles Daily Chronicle.

SUBSCRIPTION PRICE.
One week \$ 15
One month 50
One year 6 00

FRIDAY - - - - - MAY 12, 1899

A colonel of Nebraska volunteers was killed at the head of his regiment in the Philippines yesterday, says the Providence Journal. Another man who was a colonel of a Nebraska volunteers is now on a speech-making tour, condemning the cause of the United States as unjust and unholy. The Walla Walla Union asks, would it not be an insult to the memory of one to accept the views of the other as patriotic?

South Africa, it is estimated, will produce about \$90,000,000 of gold in 1899. The expansion in gold production is one of the marvels of the age. Not even the most sanguine gold standard men ever dreamed half a dozen years ago that the production of the yellow metal would reach anything like its present figures within twenty years. This gain hits the poor Bryanites as hard a blow as the advances in farm products and the general rise in wages.

The administration has wisely allowed Otis to be his own campaign manager. Necessarily he has advantages in the way of getting information about the conditions which are denied to persons 11,000 miles away from the scene. Otis has the entire confidence of the administration and of the American people. He is master of the situation. Whatever any man could do with the number of troops in the Philippines the present commander in that locality can do. Otis is doing his work with great vigor and intelligence.

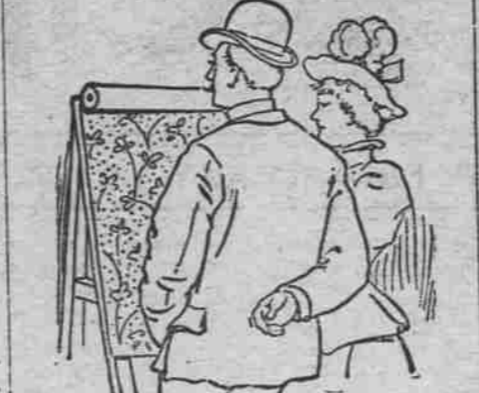
Gomez is endeavoring to hasten the disarmament of the insurgent army. This is where he has sense. The rehabilitation of the island can not proceed far until after all the armed forces in the island disband and settle down to the ways of peace. Undoubtedly Gomez will turn out to be an annexationist in a few months. It is true he has been quoted frequently against this policy. Lots of persons, however, whispering they would never consent have consented. Garcia was an anti expansionist in July, 1898, but was on the annexation side in August. Gomez is a man of sense. He will vote to make the American connection permanent.

Millions Given Away.

It is certainly gratifying to the public to know of one concern in the land who are not afraid to be generous to the needy and suffering. The proprietors of Dr. King's New Discovery for consumption, coughs and colds, have given away over ten million trial bottles of this great medicine; and have the satisfaction of knowing it has absolutely cured thousands of hopeless cases. Asthma, bronchitis, hoarseness and all diseases of the throat, chest and lungs are cured by it. Call on Blakeley & Houghton, druggists, and get a free trial bottle. Regular size, 50 cents and \$1. Every bottle guaranteed or price refunded.

I consider it not only a pleasure but a duty I owe to my neighbors to tell about the wonderful cure effected in my case by the timely use of Chamberlain's

Just What You want.



New ideas in Wall Paper here. Such wide variety as we are showing never before graced a single stock. Real imitation creton effects at ordinary prices. Good papers at cheap paper prices. Elegant designs, tasteful colorings, yours for a small price, at our store on Third street. Also a full line of house paints.

D. W. VAUSE, Third St.



There is no part of our business which does not receive its full share of attention and the stock of

Drugs, Medicines and Toilet Goods.

M. Z. DONNELL...DRUGGIST...

A good drug sign.



You well know that a good drug sign is the patronage which is bestowed on the store. It is the purity of the goods handled and the manner of doing business that makes and keeps this business. We are pleased with the result of our efforts to supply the best drugs at the best price. We are particular about the compounding of them.

Blakeley & Houghton
RELIABLE PHARMACISTS.
175 Second Street. THE DALLES

Santa Fe Route
Offers travelers choice of the following routes east. They are all famous for their scenic attraction.
O. R. & N. view Ogden and Denver.
Shasta Route view Sacramento, Ogden and Denver.
Shasta Route view Sacramento, Los Angeles and Albuquerque.
A daily line of through PULLMAN PALACE and TOURIST SLEEPER, from San Francisco and Los Angeles to Chicago. This is

The Short Line To the East.
Apply to the agents of the O. R. & N. Co. or the undersigned, for folders and descriptive literature.
J. J. DEVEREUX,
Gen. Agt. Worcester, Bldg. Portland, Or.

C. J. STUBLING
Wholesale and Retail
Wines, Liquors and Cigars.

Agency for the Great American Liquor
Yellowstone Sour Mash Whiskey.

WHISKEY from \$2.75 to \$6.00 per gallon. (4 to 15 years old.)
IMPORTED COGNAC from \$7.00 to \$12.00 per gallon. (11 to 20 years old.)
A LICFMA FEANIE from \$8.25 to \$6.10 per gallon. (4 to 11 years old.)
ONLY THE PUREST LIQUORS SOLD.

OLYMPIA BEER on draught, and Val Blatz and Olympia Beer in bottles Imported Ale and Porter.
JOBBER IN IMPORTED and DOMESTIC CIGARS.

Wasco Warehouse Company

Headquarters for Seed Grain of all kinds
Headquarters for Feed Grain of all kinds
Headquarters for Rolled Grain, all kinds
Headquarters for Bran, Shorts, and all kinds of MILL FEED
Headquarters for "Byers' Best" Pendleton Flour. This flour is manufactured expressly for family use; every sack is guaranteed to give satisfaction.
We sell our goods lower than any house in the trade, and if you don't think so call and get our prices and be convinced.
Highest Prices Paid for Wheat, Barley and Oats

Rockford "Quick Shot" Quick Sellers No Complaints
12-Plate Magazine Camera.

"Turn the lever and you are ready for another." No plate holders with slides to draw. No sleeve or changing bag. No chance to fog plates. No failures.
If you want 12 pictures quick, buy the "Quick-Shot," the only magazine camera that holds the plates securely after they are exposed. No rattling or breaking of plates. Best on earth.
3 1/2 x 4 1/4 \$6.00
4 x 5 \$9.00
With one dozen plate holders.
Manufactured under the Conley patents by the Rockford Silver Plate Co., ROCKFORD, ILL.
We sell only through local agents. Ask our agents to show you this "Quick Shot."
The Snipes-Kinersly Drug Co. AGENTS, The Dalles, Oregon.



Modes and Fabric

We are ready to show them in Dry Goods, Notions, Clothing, Boots and Shoes, Ladies' Capes and Jackets. "Time enough" is a poor principle. Those who make the earliest selections secure best results. The stock is complete and new and we invite you to look at it.
E. F. Stephens.

PIONEER BAKERY.
I have re-opened this well-known Bake and am now prepared to supply everybody with Bread, Pies and Cakes. Also all kinds of Staple and Fancy Groceries.
GEORGE RUCH, Pioneer Grocer.

Grandall & Barget
DEALERS IN
All kinds of Funeral Supplies
UNDERTAKERS and EMBALMERS
The Dalles, Or.

O. R. & N.

DEPART FOR	TIME SCHEDULE FROM DALLES.	ARRIVE FROM.
Fast Mail 11:50 p. m.	Salt Lake, Denver, Ft. Worth, Omaha, Kansas City, St. Louis, Chicago and East.	Fast Mail. 8:15 p. m.
Spokane Flyer 5:40 p. m.	Walla Walla, Spokane, Minneapolis, St. Paul, Duluth, Milwaukee, Chicago and East.	Spokane Flyer. 5:00 a. m.
8 p. m.	FROM PORTLAND, Ocean Steamships. For San Francisco. January 22, and every five days thereafter.	4 p. m.
8 p. m. Ex. Sunday 10 p. m.	Columbia Rv. Steamers. For ASTORIA and Way Landings.	4 p. m. Ex. Sunday
6 a. m. Ex. Sunday	WILLAMETTE RIVER. Oregon City, Newberg, Salem & Way Land's.	4:30 p. m. Ex. Sunday
7 a. m. Tues, Thurs. and Sat.	WILLAMETTE and YAM-HILL RIVERS. Oregon City, Dayton, and Way-Landings.	3:30 p. m. Mon., Wed. and Fri.
6 a. m. Tues, Thurs. and Sat.	WILLAMETTE RIVER. Portland to Corvallis, and Way-Landings.	4:30 p. m. Tues, Thurs. and Sat.
Lv Riparian daily	SNAKE RIVER. Riparian to Lewiston.	LEAVE LEWISTON daily

Parties desiring to go to Heppner should take No. 4, leaving The Dalles at 5:30 p. m., making direct connections at Heppner Junction. Returning making direct connection at Heppner Junction with No. 1, arriving at The Dalles at 4:15 p. m.
No. 22, through freight, east bound, does not carry passengers; arrives 2:50 a. m., departs 3:50 a. m.
No. 24, local freight, carries passengers, east bound; arrives 4:30 p. m., departs 5:15 p. m.
No. 21, west bound through freight, does not carry passengers; arrives 5:15 p. m., departs 9:30 p. m.
No. 23, west bound local freight, carries passengers; arrives 5:15 p. m., departs 8:30 a. m.
For full particulars call on O. R. & N. Co.'s agent The Dalles, or address
W. H. HURLBURT,
Gen. Pass. Agt., Portland, Or.

NORTHERN PACIFIC RY.

Pullman Sleeping Cars
Elegant Dining Cars
Tourist Sleeping Car
ST. PAUL
MINNEAPOLI
DULUTH
FARGO
GRAND FORK
CROOKSTON
WINNIPEG
HELENA and BUTTE

Through Tickets
CHICAGO
WASHINGTON
PHILADELPHIA
NEW YORK
BOSTON AND ALL POINTS EAST and SOUTH
For information, time cards, maps and tickets, call on or write to
W. C. ALLAWAY, Agent, The Dalles, Oregon
A. D. ARLTON, Asst. G. P. A., Prison Cor. Third, Portland Oregon

NORTHWESTERN TRAVELERS ARE "North-Western" Advertisers
Is the Shortest and Best Route to CHICAGO and the EAST via MINNEAPOLIS and ST. PAUL;
And also, the equipment of its trains is the most modern of the car builders' art embodying all the luxuries, comforts and necessities of "THE NEW NORTH-WESTERN LIMITED" (20th Century Train)
Is electric lighted both inside and out and equipped with handsome buffet smoking-library car, compartment and standard sleepers free chair car and modern day coach; and on which NO EXTRA FARE is charged. It makes connections at Minneapolis and St. Paul with Northern Pacific, Great Northern and "800-Pacific" trains; and leaves daily Minneapolis 7:20 p. m.; St. Paul 8:10 p. m.; and arrives Chicago 8:55 a. m.
For berth reservations, rates, folders and illustrated booklet FREE of the "Finest Train in the World" call at or address Ticket Offices 218 Washington St., Portland; 506 First Avenue, Seattle; 205 Granite Block, Helena; 118 Nicollet Avenue, Minneapolis; 355 Robert St., St. Paul; 405 West Superior St., Duluth, or address T. W. TEASDALE, General Passenger Agent, St. Paul, Minn.

Advertise in... The... Chronicle