



I have just received a fine line of Woolens in Suitings, Overcoatings and Pantings, and will be pleased to have you call and see them.

J. A. Eberle, Fine Tailoring.

The Dalles Daily Chronicle.

SUBSCRIPTION PRICE.
One week \$ 15
One month 50
One year 6 00

SATURDAY - - - - APRIL 29, 1899

SPANISH METHODS AT MANILA.

Spanish methods of government, commerce and finance in the Philippines seem to have been based on studied unreason, says the Spokesman-Review. Among other iniquitous laws which the United States authorities have abolished was one forbidding the importation of Mexican dollars of a date subsequent to 1877. As Mexican dollars are practically the only money in general circulation in the islands, the purpose and effect of this law was to create and perpetuate a ruinous monetary monopoly. At times money became so scarce that the dollar would frequently go to a premium of 10 or 12 per cent. At such times partial relief would be had by smuggling in Mexican dollars from China, and Edward W. Harden, special commissioner of the United States in the Philippines, says this smuggling of silver into the islands was a recognized industry.

"It was carried on largely by the rich mestizos, or Chinese half castes. There was a regular system for bringing in these coins, which would be shipped from Hong Kong in a special steamer and the cargo landed at some point north or south of Manila bay. Practically all of the silver was landed in the neighborhood of Bolinao, where it would be stored until it could be shipped overland to Manila. There was nothing disgraceful in the view of the people in Manila in these practices, and those who were interested in the illicit trade will discuss their operations, telling the manner in which coins were brought in. In a convent north of Manila there were regularly equipped vaults in the basement of the building, where much of the silver was first taken."

Immediately on the occupation of Manila by the American forces, permission was given the banks to import silver freely, and Mr. Harden says the effect has been to keep exchange rates on a more stable basis.

Many of us scarcely realize the anxiety with which the relatives of the men in the Philippines scan the pages of the daily papers devoted to war news. A friend of ours was at Airlie, over on the west side, a few days ago. He had bought a copy of a newspaper, when a resident of the vicinity asked him what was the news from the war. He turned to the dispatches, and the first item that greeted his eye was one telling of the death of a brother of the inquirer, from smallpox, in the Philippines. He was a regular. No person who has not a brother, son or other near relative with the troops at the front can have a clear conception of the terrible suspense and anxiety, from day to day, hoping for the best always, but dreading the worse continually.—Statesman.

Deafness Cannot be Cured. by local applications, as they cannot reach the diseased portion of the ear

There is only one way to cure deafness, and that is by constitutional remedies. Deafness is caused by an inflamed condition of the mucous lining of the Eustachian Tube. When this tube is inflamed you have a rumbling sound or imperfect hearing, and when it is entirely closed, Deafness is the result, and unless the inflammation can be taken out and this tube restored to its normal condition, hearing will be destroyed forever; nine cases out of ten are caused by catarrh, which is nothing but an inflamed condition of the mucous surfaces.

We will give One Hundred Dollars for any case of Deafness (caused by catarrh) that cannot be cured by Hall's Catarrh Cure. Send for circulars; free.

F. J. CHENEY & Co., Toledo, O.
Sold by Druggists, 75c. 6-10
Hall's Family Pills are the best.

Elegant new Pullman palace sleepers between Portland and Chicago have just been placed in service via the O. R. & N., Oregon Short Line, Union Pacific and Chicago & Northwestern railways daily every day in the year. Cars are of the very latest pattern, in fact being the most improved up-to-date sleeping cars turned out by the Pullman Company. These new palaces will leave Portland on the evening fast train of the O. R. & N. arriving at Chicago the morning of the fourth day and running through without change via Granger and Omaha. 191f

Kodol Dyspepsia Cure.

Digests what you eat.
It artificially digests the food and aids Nature in strengthening and reconstructing the exhausted digestive organs. It is the latest discovered digestant and tonic. No other preparation can approach it in efficiency. It instantly relieves and permanently cures Dyspepsia, Indigestion, Heartburn, Flatulence, Sour Stomach, Nausea, Sick Headache, Gastralgia, Cramps, and all other results of imperfect digestion.

Prepared by E. C. DeWitt & Co., Chicago.

50 YEARS' EXPERIENCE PATENTS

TRADE MARKS DESIGNS COPYRIGHTS &c.
Anyone sending a sketch and description may quickly ascertain our opinion free whether an invention is probably patentable. Communications strictly confidential. Handbook on Patents sent free. Oldest agency for securing patents. Patents taken through Munn & Co. receive special notice, without charge, in the Scientific American.

A Beautiful Skin.
Ladies, if you desire a transparent, clear and fresh complexion, use Dr. Bourdon's French Arsenic Complexion Wafers. Their effect is simply magical, possessing the wizard touch in producing and preserving a beautiful transparency and pellucid clearness of complexion, shapely contour of form, brilliant eyes, soft and smooth skin where the reverse exists. Even the coarsest and most repulsive skin, marred by freckles, moth, blackheads, pimples, vulgar redness, yellow and muddy skin are permanently removed, and a deliciously clear and refined complexion assured.

The Parisian Drug Co.,
131 Montgomery St., San Francisco Cal.

FRENCH & CO., ANKERS.

TRANSACT A GENERAL BANKING BUSINESS
Letters of Credit issued available in the Eastern States.
Sight Exchange and Telegraphic Transfers sold on New York, Chicago, St. Louis, San Francisco, Portland and Oregon, Seattle Wash., and various points in Oregon and Washington.
Collections made at all points on favorable terms.

PROFESSIONALS.

H. A. STURDEVANT,
Dentist.
Office over French & Co.'s Bank
Phone 6, THE DALLES, OREGON

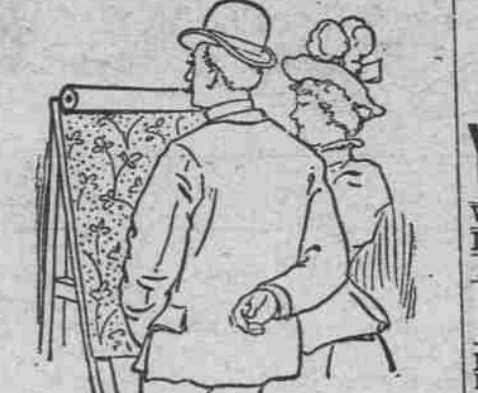
DR. GEISENDORFFER
Physician and Surgeon,
Special attention given to surgery.
Rooms 21 and 22. Tel. 323 Vogt Block

Oregon Viavi Company,
Room 7, over French's Bank.
Office hours, Charlotte F. Roberts, Local Manager.
2 to 4 p. m.

FRED. W. WILSON,
ATTORNEY-AT-LAW,
THE DALLES, OREGON.
Office over First Nat. Bank.

H. HUNTINGTON & WILSON,
ATTORNEYS-AT-LAW,
THE DALLES, OREGON.
Office over 1st Nat. Bank.

Just What You want.



New ideas in Wall Paper here. Such wide variety as we are showing never before graced a single stock. Real imitation creton effects at ordinary prices. Good papers at cheap paper prices. Elegant designs, tasteful colorings, yours for a small price, at our store on Third street. Also a full line of house paints.

D. W. VAUSE, Third St.

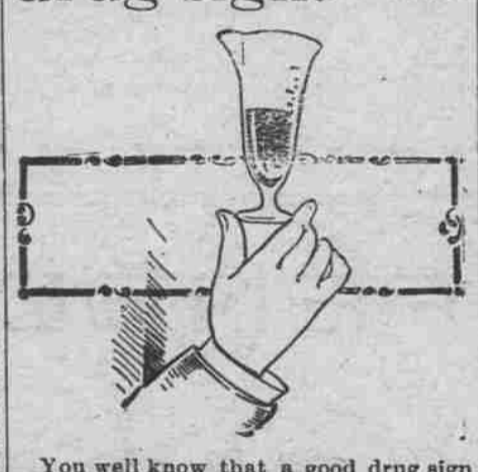


There is no part of our business which does not receive its full share of attention and the stock of
Drugs, Medicines and Toilet Goods.

we carry are not surpassed by any in the city. Our Prescription Department, however, is considered the most important and the utmost care is exercised in compounding and filling orders. The purity of the drugs used and absolute accuracy in measuring and weighing ensure perfect results.

M. Z. DONNELL
...DRUGGIST...

A good drug sign.



You well know that a good drug sign is the patronage which is bestowed on the store. It is the purity of the goods handled and the manner of doing business that makes and keeps this business. We are pleased with the result of our efforts to supply the best drugs at the best price. We are particular about the compounding of them.

Blakely & Houghton

RELIABLE PHARMACISTS.
175 Second Street. THE DALLES

Santa Fe Route

Offers travelers choice of the following routes east. They are all famous for their scenic attraction.
O. R. & N. view Ogden and Denver.
Shasta Route view Sacramento, Ogden and Denver.
Shasta Route view Sacramento, Los Angeles and Albuquerque.
A daily line of through PULLMAN PALACE and TOURIST SLEEPER, from San Francisco and Los Angeles to Chicago. This is

The Short Line To the East.

Apply to the agents of the O. R. & N. Co. or the undersigned, for folders and descriptive literature.
J. J. DEVEREUX,
Gen. Agt. Worcester, Bldg. Portland, Or.

C. J. STUBLING

Wholesale and Retail
Wines, Liquors and Cigars.
Agency for the Greatest American Liquor

Yellowstone Sour Mash Whiskey.

WHISKEY from \$2.75 to \$6.00 per gallon. (4 to 15 years old.)
IMPORTED COGNAC from \$7.00 to \$12.00 per gallon. (11 to 20 years old.)
A LIORINA FRANDIS from \$3.25 to \$6.00 per gallon. (4 to 11 years old.)

ONLY THE PUREST LIQUORS SOLD.

HOP GOLD BEER on draught, and Val Blatz and Hop Gold Beer in bottles Imported Ale and Porter.

Wasco Warehouse Company

Headquarters for Seed Grain of all kinds.
Headquarters for Feed Grain of all kinds.
Headquarters for Rolled Grain, all kinds.
Headquarters for Bran, Shorts, and all kinds of MILL FEED
Headquarters for "Byers' Best" Pendleton Flour. This Flour is manufactured expressly for family use; every sack is guaranteed to give satisfaction. We sell our goods lower than any house in the trade, and if you don't think so call and get our prices and be convinced.
Highest Prices Paid for Wheat, Barley and Oats.

Rockford "Quick Shot"

Quick Sellers No Complaints
12-Plate Magazine Camera.

"Turn the lever and you are ready for another." No plate holders with slides to draw. No sleeve or changing bag. No chance to fog plates. No failures.
If you want 12 pictures quick, buy the "Quick-Shot," the only magazine camera that holds the plates securely after they are exposed. No rattling or breaking of plates. Best on earth.

3 1/2 x 4 1/4 \$6.00
4x5 \$9.00
With one dozen plate holders.

Manufactured under the Conley patents by the Rockford Silver Plate Co., ROCKFORD, ILL.

We sell only through local agents. Ask our agents to show you this "Quick Shot."

Modes and Fabric

We are ready to show them in Dry Goods, Notions, Clothing, Boots and Shoes, Ladies' Capes and Jackets. "Time enough" is a poor principle. Those who make the earliest selections secure best results. The stock is complete and new and we invite you to look at it.

PIONEER BAKERY.

I have re-opened this well-known Bake, and am now prepared to supply everybody with Bread, Pies and Cakes. Also all kinds of Staple and Fancy Groceries.
GEORGE RUCH, Pioneer Grocer.

Grandall & Barget

DEALERS IN
All kinds of Funeral Supplies and EMBALMERS
UNDERTAKERS
The Dalles, Or.

Robes, Burial Shoes, Etc.

Advertise in...

The... **Chronicle**

O. R. & N.

DEPART FOR	TIME SCHEDULE FROM DALLES.	ARRIVE FROM.
Fast Mail 11:50 p. m.	Salt Lake, Denver, Ft. Worth, Omaha, Kansas City, St. Louis, Chicago and East.	Fast Mail. 3:15 p. m.
Spokane Flyer 5:40 p. m.	Walla Walla, Spokane, Minneapolis, St. Paul, Duluth, Milwaukee, Chicago and East.	Spokane Flyer. 6:00 a. m.
8 p. m.	FROM PORTLAND. Ocean Steamships. For San Francisco. JANUARY 22, and every five days thereafter.	4 p. m.
8 p. m. Ex. Sunday 10 p. m.	Columbia Rv. Steamers. TO ASTORIA and Way Landings.	4 p. m. Ex. Sunday
6 a. m. Ex. Sunday	WILLAMETTE RIVER. Oregon City, Newberg, Salem & Way Land'g.	4:30 p. m. Ex. Sunday
7 a. m. Tues, Thurs. and Sat.	WILLAMETTE and YAM-HILL RIVERS. Oregon City, Dayton, and Way-Landings.	3:30 p. m. Mon., Wed. and Fri.
6 a. m. Tues, Thurs. and Sat.	WILLAMETTE RIVER. Portland to Corvallis, and Way-Landings.	4:30 p. m. Tues, Thurs. and Sat.
Ly Riparia daily	SNAKE RIVER. Riparia to Lewiston.	LEAVE LEWISTON. daily

Parties desiring to go to Heppner should take No. 4, leaving The Dalles at 5:30 p. m., making direct connections at Heppner Junction. Returning making direct connection at Heppner Junction with No. 1, arriving at The Dalles at 3:15 p. m.
No. 22, through freight, east bound, does not carry passengers; arrives 2:50 a. m., departs 3:50 a. m.
No. 24, local freight, carries passengers, east bound; arrives 4:30 p. m., departs 5:15 p. m.
No. 21, west bound through freight, does not carry passengers; arrives 5:15 p. m., departs 9:30 p. m.
No. 23, west bound local freight, carries passengers; arrives 5:15 p. m., departs 8:30 a. m.
For full particulars call on O. R. & N. Co.'s agent The Dalles, or address
W. H. HURLBURT,
Gen. Pass. Agt., Portland, Or.

NORTHERN PACIFIC RY.

Pullman Sleeping Cars
Elegant Dining Cars
Tourist Sleeping Car
ST. PAUL
MINNEAPOLI
DULUTH
FARGO
GRAND FOR
CROOKSTON
WINNIPEG
HELENA and BUTTE

Through Tickets

CHICAGO
WASHINGTON
PHILADELPHIA
NEW YORK
BOSTON AND ALL POINTS EAST and SOUTH
For information, time cards, maps and tickets, call on or write to
W. C. ALLAWAY, Agent,
The Dalles, Oregon
A. D. 25
ARLTON, Asst. G. P. A.,
Prison Cor. Third, Portland Oregon

NORTHWESTERN TRAVELERS ARE "North-Western" Advertisers

Is the Shortest and Best Route to CHICAGO and the EAST via MINNEAPOLIS and ST. PAUL; And also, the equipment of its trains is the most modern of the car builder's art embodying all the luxuries, comforts and necessities of travel.
"THE NEW NORTH-WESTERN LIMITED" (20th Century Train)

Is electric lighted both inside and out and equipped with handsome buffet smoking library car, compartment and standard sleepers, free chair car and modern day coach; and on which no EXTRA FARE is charged. It makes connections at Minneapolis and St. Paul with Northern Pacific, Great Northern, and "Soo-Pacific" trains; and leaves daily Minneapolis 7:30 p. m.; St. Paul 8:15 p. m.; and arrives Chicago 9:30 a. m. For berth, reservations, rates, folders and illustrated booklet FREE of the "Finest Train in the World" call at or address Ticket Offices 214 Washington St., Portland; 606 First Avenue, Seattle; 205 Granite Block, Helena; 113 Nicollet Avenue, Minneapolis; 305 Robert St., St. Paul; 405 West Superior St., Duluth, or address T. W. TRISDALE, General Passenger Agent, St. Paul, Minn.