



I have just received a fine line of Woolens in Suitings, Overcoatings and Pantings, and will be pleased to have you call and see them.

J. A. Eberle, Fine Tailoring.

The Dalles Daily Chronicle.

SUBSCRIPTION PRICE.
One week \$ 15
One month 50
One year 6 00

WEDNESDAY - - - APRIL 19, 1899

PERNICIOUS MACHINES.

More pernicious even than the big gambling resorts are the nickel-in-the slot machines which pay money prizes. The growth of this form of gambling has been astounding. The wheels are whirling in cigar stores, saloons, hotels and restaurants. Their buzzing sound, heard at all hours of the day and night, recalls the mad days after the great fire, when "wheels of fortune" were spinning in many tents.

Hundreds of young men who would not play at faro or roulette in the big gambling resorts, are becoming fiercely addicted to the gambling habit from playing these machines.

The impression conveyed by the name of the device is that it is a mild form of gambling. That is a mistake. A nickel seems a small matter, but these machines have a number of slots, the players are tempted with the possibility of a number of prizes, and most of them risk from 10 cents to 25 cents on every spin of the wheel. As only a few seconds are required to drop in the nickels, press the bar and determine the result of the play, it is an easy matter to part with 50 cents within a minute. Many young men lose their entire week's earnings within an hour, or even less time.

These machines are particularly pernicious because they sit in public places which young men—many of them minors—may frequent and not lose social standing or excite the alarm of their parents or employers. They are recruiting stations for the big public gambling halls. They are unlawful, and should be immediately suppressed.—Spokesman-Review.

Answering the supposed question of a foreigner as to how many states there are in the union, the Salt Lake Tribune says: "Forty-five states and some territories; they fill all the space between the two great oceans, and at one bugle call last summer in every one, soldiers fell into line; the tread of thousands was like the tolling of the bells of destiny, and the flashing of their standards reflected back the sunlight through one eighth of the sun's daily round. And they all speak one language, all sing the same song; all turn for inspiration to the same flag; and though each is a separate wave, when blended they make but one ocean, and when in full roar the shores of the nation are shaken, for in majesty, in latent power, in unapproachable splendor, there is no counterpart for them in all the records of the nations that have existed, since nations were first organized on earth."

Dr. O'Neil, of Philadelphia, it is thought, has made a great discovery in a cure for that dreaded and prevalent disease, consumption. Consumption, as is shown by statistics, destroys 102,000 American lives annually. The disease kills about

seven times as many people every year as yellow fever ever swept out of existence in any year. Dr. O'Neil, at the Franklin Institute in Philadelphia, is showing to the medical world that a process of light, electricity and ozone, applied directly and powerfully to the patient, destroys the germs of the disease and repairs the waste in life. In other words, there is produced artificially and in intenser forms precisely those conditions that in nature have been found remedial—those that are sought by the afflicted in mountain resort and sanitariums in all lands. The results of the experiments at the Franklin Institute seem clearly to justify the hope at least that science is presently to be armed anew against the most deadly and awful of all diseases.

Kodol Dyspepsia Cure.

Digests what you eat.
It artificially digests the food and aids Nature in strengthening and reconstructing the exhausted digestive organs. It is the latest discovered digestant and tonic. No other preparation can approach it in efficiency. It instantly relieves and permanently cures Dyspepsia, Indigestion, Heartburn, Flatulence, Sour Stomach, Nausea, Sick Headache, Gastralgia, Cramps, and all other results of imperfect digestion. Prepared by E. C. DeWitt & Co., Chicago.

Notice.—Timber Culture.

U. S. LAND OFFICE, THE DALLES, OREGON, February 21, 1899.
Complaint having been entered at this office by Ollie F. Weberg against Wesley Sumner for failure to comply with law as to timber culture Entry No. 3825, dated September 22, 1888, upon the S. E. 1/4 Section 10, Township 5, south of Willamette Meridian, Range 12 east, in Wasco County, State of Oregon, with a view to the cancellation of said entry, contestant alleging that said Wesley Sumner never plowed or cultivated said tract except about six acres and never at any time nor has any one for him planted any trees or cuttings, or seeds, and also the said Wesley Sumner about the month of February, 1890, duly relinquished said tract to the United States and delivered said relinquishment to this office and said relinquishment was duly filed in the U. S. office of The Dalles, Oregon, and at the said time and prior thereto abandoned said tract and has never since said time returned thereto or claimed any right or interest in said tract of land.
The said parties are hereby summoned to appear at this office on the 20th day of April, 1899, at 10 o'clock a. m., to respond and furnish testimony concerning said alleged failure.
JAY P. LUCAS, Register.

A Beautiful Skin.

Ladies, if you desire a transparent, clear and fresh complexion use Dr. Bourdon's French Arsenic Complexion Wafers. Their effect is simply magical, possessing the wizard touch in producing and preserving a beautiful transparency and pellucid clearness of complexion, shapely contour of form, brilliant eyes, soft and smooth skin where the reverse exists. Even the coarsest and most repulsive skin, marred by wrinkles, moth, blackheads, pimples, vulgar eruptions, yellow and muddy skin are permanently removed, and a deliciously clear and refined complexion assured.
Price per small box, 50 cents; large box, \$1.00 or six large boxes, \$5. Sent to any address post paid and under plain wrapper upon receipt of the above amount. Write for free circular.

The Parisian Drug Co.,
151 Montgomery St., San Francisco Cal.

FRENCH & CO., ANKERS.

TRANSACT A GENERAL BANKING BUSINESS
Letters of Credit issued available in the Eastern States.

Sight Exchange and Telegraphic Transfers sold on New York, Chicago, St. Louis, San Francisco, Portland Oregon, Seattle Wash., and various points in Oregon and Washington.
Collections made at all points on favorable terms.

PROFESSIONALS.

H. A. STURDEVANT,
Dentist.
Office over French & Co.'s Bank
Phone 6, THE DALLES, OREGON

MOLLIE V. O'LEARY,
Art Studio.
Room 3, Chapman Block.
China painting a specialty.

DR. GEISENDORFFER
Physician and Surgeon,
Special attention given to surgery.
Rooms 21 and 22, Tel. 228, Vnet Block

Oregon Viavi Company,
Room 7, over French's Bank.

Office hours, 2 to 4 p. m.
Charlotte F. Roberts, Local Manager.

FRED. W. WILSON,
ATTORNEY AT LAW,
THE DALLES, OREGON.
Office over First Nat. Bank.

B. S. HUNTINGTON & **H. S. WILSON**
HUNTINGTON & WILSON,
ATTORNEYS AT LAW,
THE DALLES, OREGON.
Office over First Nat. Bank.

Just What You want.



New ideas in Wall Paper here. Such wide variety as we are showing never before graced a single stock. Real imitation creton effects at ordinary prices. Good papers at cheap paper prices. Elegant designs, tasteful colorings, yours for a small price, at our store on Third street. Also a full line of house paints.

D. W. VAUSE, Third St.



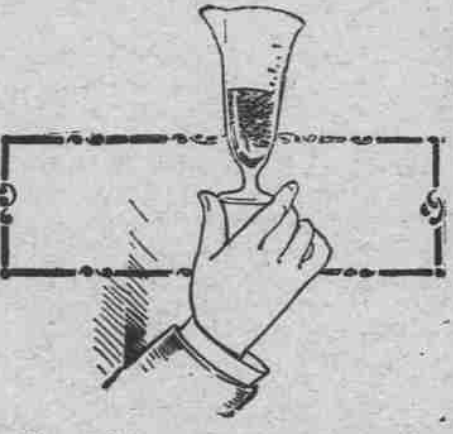
There is no part of our business which does not receive its full share of attention and the stock of

Drugs, Medicines and Toilet Goods.

We carry a not surpassed by any in the city. Our Prescription Department, however, is considered the most important and the utmost care is exercised in compounding and filling orders. The purity of the drugs used and absolute accuracy in measuring and weighing ensure perfect results.

M. Z. DONNELL
...DRUGGIST...

A good drug sign.



You well know that a good drug sign is the patronage which is bestowed on the store. It is the purity of the goods handled and the manner of doing business that makes and keeps this business. We are pleased with the result of our efforts to supply the best drugs at the best price. We are particular about the compounding of them.

Blahley & Houghton

RELIABLE PHARMACISTS.
175 Second Street. THE DALLES

Santa Fe Route

Offers travelers choice of the following routes east. They are all famous for their scenic attraction.
O. R. & N. view Ogden and Denver.
Shasta Route view Sacramento, Ogden and Denver.
Shasta Route view Sacramento, Los Angeles and Albuquerque.
A daily line of through PULLMAN PALACE and TOURIST SLEEPER, from San Francisco and Los Angeles to Chicago. This is

The Short Line

from southern California
To the East.

Apply to the agents of the O. R. & N. Co. or the undersigned, for folders and descriptive literature.
J. J. DEVEREUX,
Gen. Agt. Worcester, Bldg. Portland, Or.

C. J. STUBLING

Wholesale and Retail
Wines, Liquors and Cigars.
Agency for the Greatest American Liquor

Yellowstone Sour Mash Whiskey.

WHISKEY from \$2.75 to \$8.00 per gallon. (4 to 15 years old.)
IMPORTED COGNAC from \$7.00 to \$12.00 per gallon. (11 to 20 years old.)
A LIQFRIA FEARDIS from \$3.25 to \$6.00 per gallon. (4 to 11 years old.)

ONLY THE PUREST LIQUORS SOLD.

HOP GOLD BEER on draught, and Val Blatz and Hop Gold Beer in bottle Imported Ale and Porter.

JOBBER IN IMPORTED and DOMESTIC CIGARS.

Rockford "Quick Shot"

12-Plate Magazine Camera.

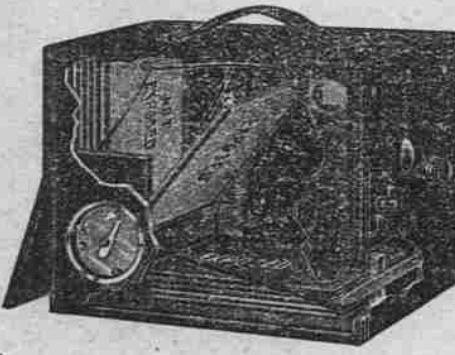
"Turn the lever and you are ready for another." No plate holders with slides to draw. No sleeve or changing bag. No chance to fog plates. No failures.

If you want 12 pictures quick, buy the "Quick-Shot," the only magazine camera that holds the plates securely after they are exposed. No rattling or breaking of plates. Best on earth.

3 1/2 x 4 1/4 \$6.00
4 x 5 \$9.00
With one dozen plate holders.

Manufactured under the Conley patents by the
Rockford Silver Plate Co.,
ROCKFORD, ILL.

We sell only through local agents. Ask our agents to show you this "Quick Shot."



The Snipes-Kinersly Drug Co.
AGENTS, The Dalles, Oregon.

Wasco Warehouse Company

Headquarters for Seed Grain of all kinds.
Headquarters for Feed Grain of all kinds.
Headquarters for Rolled Grain, all kinds.
Headquarters for Bran, Shorts, and all kinds of MILL FEED.
Headquarters for "Byers' Best" Pendleton Flour. This Flour is manufactured expressly for family use; every sack is guaranteed to give satisfaction. We sell our goods lower than any house in the trade, and if you don't think so call and get our prices and be convinced.
Highest Prices Paid for Wheat, Barley and Oats.

Modes and Fabric

We are ready to show them in Dry Goods, Notions, Clothing, Boots and Shoes, Ladies' Capes and Jackets. "Time enough" is a poor principle. Those who make the earliest selections secure best results. The stock is complete and new and we invite you to look at it.

E. F. Stephens.

Grandall & Burget
DEALERS IN
All kinds of
Funeral Supplies
UNDERTAKERS
AND EMBALMERS
Robes,
Burial Shoes,
Etc.
The Dalles, Or.

PIONEER BAKERY.

I have re-opened this well-known Bake, and am now prepared to supply everybody with Bread, Pies and Cakes. Also all kinds of Staple and Fancy Groceries.
GEORGE RUCH, Pioneer Grocer.

Advertise in...

The... **Chronicle**

O. R. & N.

DEPART FOR	TIME SCHEDULES FROM DALLES.	ARRIVE FROM.
Fast Mail 11:50 p. m.	Salt Lake, Denver, Ft. Worth, Omaha, Kansas City, St. Louis, Chicago and East.	Fast Mail. 8:15 p. m.
Spokane Flyer 5:40 p. m.	Walla Walla, Spokane, Minneapolis, St. Paul, Duluth, Milwaukee, Chicago and East.	Spokane Flyer. 5:00 a. m.
8 p. m.	FROM PORTLAND, Ocean Steamerhips. For San Francisco—January 22, and every five days thereafter.	4 p. m.
8 p. m. Ex-Sunday 10 p. m.	Columbia Rv. Steamers. To ASTORIA and Way Landings.	4 p. m. Ex-Sunday
6 a. m. Ex-Sunday	WILLAMETTE RIVER. Oregon City, Newberg, Salem & Way Land's.	4:30 p. m. Ex-Sunday
7 a. m. Tues, Thurs, and Sat.	WILLAMETTE AND YAM-HILL RIVERS. Oregon City, Dayton, and Way-Landings.	3:30 p. m. Mon, Wed and Fri.
6 a. m. Tues, Thurs, and Sat.	WILLAMETTE RIVER. Portland to Corvallis, and Way-Landings.	4:30 p. m. Tues, Thurs and Sat.
Lv Riparia daily	SNAKE RIVER. Riparia to Lewiston.	LEAVE LEWISTON, daily

Parties desiring to go to Heppner should take No. 4, leaving The Dalles at 3:30 p. m., making direct connections at Heppner Junction. Returning making direct connection at Heppner Junction with No. 1, arriving at The Dalles at 4:15 p. m.
No. 22, through freight, east bound, does not carry passengers; arrives 2:50 a. m., departs 3:50 a. m.
No. 24, local freight, carries passengers, east bound; arrives 4:30 p. m., departs 5:15 p. m.
No. 21, west bound through freight, does not carry passengers; arrives 8:15 p. m., departs 9:30 p. m.
No. 23, west bound local freight, carries passengers; arrives 5:15 p. m., departs 5:30 a. m.
For full particulars call on O. R. & N. Co.'s agent The Dalles, or address
W. H. HURLBURT,
Gen. Pas. Agt., Portland, Or.

NORTHERN PACIFIC RY.

RUN S
Pullman
Elegant
Tourist
Sleeping Cars
Dining Cars
Sleeping Car
ST. PAUL
MINNEAPOLI
DULUTH
FARGO
GRAND FOR
CROOKSTON
WINNIPEG
HELENA and BUTE

Through Tickets
CHICAGO
WASHINGTON
PHILADELPHIA
NEW YORK
BOSTON AND ALL POINTS EAST AND SOUTH

For information, time cards, maps and tickets, call on or write to
W. C. ALLAWAY, Agent,
The Dalles, Oregon
A. D. 25
ARLTON, Asst. G. P. A.,
rison Cor. Third, Portland Oregon

NORTHWESTERN TRAVELERS ARE
"North-Western" Advertisers
Is the Shortest and Best Route to CHICAGO and the EAST
via
MINNEAPOLIS and ST. PAUL;

And also, the equipment of its trains is the most modern of the car builder's art, embodying all the luxuries, comforts and necessities of travel.
"THE NEW NORTHWESTERN LIMITED"
(20th Century Train)
Is electric lighted both inside and out, and equipped with handsome buffet smoking-library car, compartment and standard sleepers, free chair car and modern day coach; and on which an EXTRA FARE is charged. It makes connections at Minneapolis and St. Paul with Northern Pacific, Great Northern and " Soo-Pacific " trains; and leaves daily Minneapolis 7:30 p. m.; St. Paul 8:10 p. m.; and arrives Chicago 9:30 a. m.
For berth reservations, rates, folders and illustrated booklet FREE of the "Finest Train in the World" call at or address Ticket Offices 248 Washington St., Portland; 606 First Avenue, Seattle; 206 Granite Block, Helena; 413 Nicollet Avenue, Minneapolis; 305 Robert St., St. Paul; 405 West Superior St., Duluth. Or address T. W. TRADALE, General Passenger Agent, St. Paul, Minn.