

The Dalles Daily Chronicle.

SUBSCRIPTION PRICE. One week \$ 15 One month 50 One year 6 00

WEDNESDAY - - MARCH 29, 1899

MUST CAPTURE AGUINALDO.

From the cable accounts of the fighting at Manila, it would appear that Aguinaldo must presently prepare to do the "last stand" act that is so popular with the leaders of a lost cause, says the Spokesman-Review.

Perhaps the best thing that could now happen would be an early battle at Malolos, the defeat there of the Filipinos and the capture of Aguinaldo. The wily leader of the insurgents, however, may elude capture, but his taking would mean more than several victorious engagements to the American arms.

From the army recruiting stations all over the country comes the report of an eagerness to enlist, especially on the part of the former volunteers. The large majority of recruits desire to join regiments which are at Manila or have been ordered thither.

For frost bites, burns, indolent sores, eczema, skin disease, and especially Piles, De Witt's Witch Hazel Salve stands first and best. Look out for dishonest people who try to imitate and counterfeit it.

The steamer Spokane has been placed in service on the Snake river between Sparta and Lewiston with double daily service and will be operated as a through mail, express and passenger steamer,

making round trips daily, except Saturday. Leave Riparia at 2:30 a. m. arriving at Lewiston at 12 o'clock noon. Leave Lewiston at 2:30 p. m. arriving at Riparia at 7 o'clock p. m.

Notice to Tax Payers.

I will promptly close the tax roll and turn over the delinquent list to clerk on first Monday in April. Interest on all county warrants paid in for taxes shall cease on and after the turning over of such roll.

ROBERT KELLY, Sheriff, Wasco Co. The Dalles, March 15, 1899.

The Dalles, Portland and Astoria Navigation Co.



Strs. Regulator & Dalles City

Daily (except Sunday) between

The Dalles, Hood River, Cascade Locks, Vancouver and Portland.

Touching at way points on both sides of the Columbia river.

Both of the above steamers have been rebuilt, and are in excellent shape for the season of 1899. The Regulator Line will endeavor to give its patrons the best service possible.

For Comfort, Economy and Pleasure, travel by the steamers of The Regulator Line.

The above steamers leave Portland and Dalles at 7 a. m., and arrive at destination in ample time for outgoing trains.

W. C. Allaway, General Agent.

A Beautiful Skin.

Ladies, if you desire a transparent, clear and fresh complexion use Dr. Bourdon's French Arsenic Complexion Water. Their effect is simply magical, possessing the wizard touch in producing and preserving a beautiful transparency and pellucid clearness of complexion.

The Parisian Drug Co., 131 Montgomery St., San Francisco Cal.

FRENCH & CO., BANKERS.

TRANSACT A GENERAL BANKING BUSINESS Letters of Credit issued available in the Eastern States.

Sight Exchange and Telegraphic Transfers sold on New York, Chicago, St. Louis, San Francisco, Portland Oregon, Seattle Wash., and various points in Oregon and Washington.

PROFESSIONALS.

H. A. STURDEVANT, Dentist. Office over French & Co.'s Bank Phone 6, THE DALLES, OREGON

MOLLIE V. O'LEARY, Art Studio. Room 3, Chapman Block. China painting a specialty.

DR. GEISENDORFFER, Physician and Surgeon, Special attention given to surgery. Rooms 21 and 22, Tel. 328 Vogt Block

Branch Office Oregon Viavi Company, Room 7, over French's Bank.

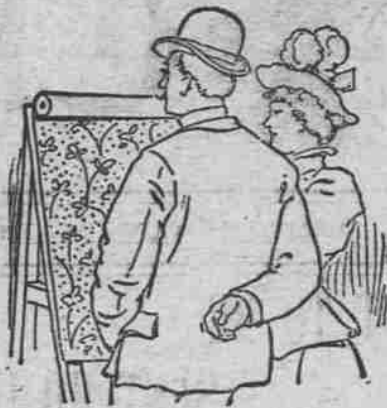
Office hours, 2 to 4 p. m. Charlotte F. Roberts, Local Manager.

FRED W. WILSON, ATTORNEY-AT-LAW, THE DALLES, OREGON. Office over First Nat. Bank.

J. S. HUNTINGTON & WILSON, ATTORNEYS AT LAW, THE DALLES, OREGON. Office over First Nat. Bank.

J. J. DEVEREUX, Gen. Agt. Worcester, Bldg. Portland, Or.

Just What You want.



New ideas in Wall Paper here. Such wide variety as we are showing never before graced a single stock. Real imitation creton effects at ordinary prices.

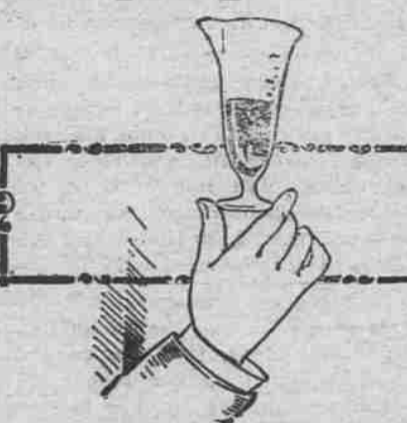
A Neglected Cold



is the forerunner of almost every ailment. It debilitates the system and leaves it an easy prey to disease. Loss of hearing and dimness of sight are amongst the ill effects.

M. Z. DONNELL, DRUGGIST.

A good drug sign.



You well know that a good drug sign is the patronage which is bestowed on the store. It is the purity of the goods handled and the manner of doing business that makes and keeps this business.

Blahelley & Houghton

RELIABLE PHARMACISTS. 175 Second Street. THE DALLES

Santa Fe Route

Offers travelers choice of the following routes east. They are all famous for their scenic attraction. O. R. & N. view Ogden and Denver. Shasta Route view Sacramento, Ogden and Denver.

The Short Line To the East.

Apply to the agents of the O. R. & N. Co. or the undersigned, for folders and descriptive literature. J. J. DEVEREUX, Gen. Agt. Worcester, Bldg. Portland, Or.

C. J. STUBLING

Wholesale and Retail Wines, Liquors and Cigars. Agency for the Greatest American Liquor

Yellowstone Sour Mash Whiskey.

WHISKEY from \$2.75 to \$6.00 per gallon. (4 to 15 years old.) IMPORTED COGNAC from \$7.00 to \$12.00 per gallon. (11 to 20 years old.) A LIORNA BRANDIES from \$3.25 to \$6.00 per gallon. (4 to 11 years old.)

ONLY THE PUREST LIQUORS SOLD.

HOP GOLD BEER on draught, and Val Blatz and Hop Gold Beer in bottles Imported Ale and Porter.

JOBBER IN IMPORTED and DOMESTIC CIGARS.

Wasc Warehouse Company

Headquarters for Seed Grain of all kinds. Headquarters for Feed Grain of all kinds. Headquarters for Rolled Grain, all kinds. Headquarters for Bran, Shorts, and all kinds of MILL FEED. Headquarters for "Byers' Best" Pendleton Flour.

We sell our goods lower than any house in the trade, and if you don't think so call and get our prices to be convinced.

Highest Prices Paid for Wheat, Barley and Oats.

Rockford "Quick Shot" Quick Sellers No Complaints

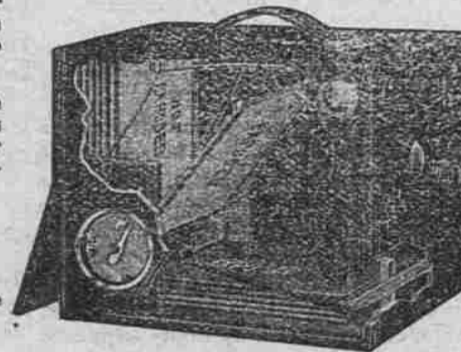
"Turn the lever and you are ready for another." No plate holders with slides to draw. No sleeve or changing bag. No chance to fog plates. No failures.

If you want 12 pictures quick, buy the "Quick-Shot," the only magazine camera that holds the plates securely after they are exposed. No rattling or breaking of plates. Best on earth.

3 1/2 x 4 1/4 \$6.00 4x5 \$9.00 With one dozen plate holders.

Manufactured under the Conley patents by the Rockford Silver Plate Co., ROCKFORD, ILL.

We sell only through local agents. Ask our agents to show you this "Quick shot."



The Snipes-Kinersly Drug Co. AGENTS, The Dalles, Oregon.

Grandall & Barget DEALERS IN All kinds of Funeral Supplies AND UNDERTAKERS EMBALMERS Robes, Burial Shoes, Etc. The Dalles, Or.

PIONEER BAKERY. I have re-opened this well-known Bake, and am now prepared to supply everybody with Bread, Pies and Cakes. Also all kinds of Staple and Fancy Groceries. GEORGE RUCH, Pioneer Grocer.

...Spring Is Coming... And F. S. GUNNING, the blacksmith, is prepared to put your buggies plows and farm implements in proper shape. Second and Laughlin Streets, Phone 157. THE DALLES, OREGON.

Advertise in... The... Chronicle

O. R. & N.

Table with columns: DEPART FOR, TIME SCHEDULE FROM DALLES, ARRIVE FROM. Lists train routes to various cities like Salt Lake, Denver, Ft. Worth, Omaha, Kansas City, St. Louis, Chicago, Spokane, Walla Walla, etc.

Parties desiring to go to Heppner should take No. 4, leaving The Dalles at 5:30 p. m., making direct connections at Heppner junction. Returning making direct connection at Heppner junction with No. 1, arriving at The Dalles at 8:15 p. m.

NORTHERN PACIFIC RY.

Pullman Sleeping Cars, Elegant Dining Cars, Tourist Sleeping Car. ST. PAUL, MINNEAPOLI, DULUTH, FARGO, GRAND FORK, CROOKSTON, WINNIPEG, HELENA and BUTTE.

Through Tickets CHICAGO, WASHINGTON, PHILADELPHIA, NEW YORK, BOSTON AND ALL POINTS EAST AND SOUTH. For information, time cards, maps and tickets, call on or write to W. C. ALLAWAY, Agent, The Dalles, Oregon.

NORTHWESTERN TRAVELERS ARE "North-Western" Advertisers. Is the Shortest and Best Route to CHICAGO and the EAST via MINNEAPOLIS and ST. PAUL. And also, the equipment of its trains is the most modern of the car builders art embodying all the luxuries, comforts and accessories of travel. "THE NEW NORTH-WESTERN LIMITED" (20th Century Train) is electric lighted both inside and out, and equipped with handsome buffet-smoking-library-car, compartment and standard sleepers, free chair car and modern day coach; and on which no EXTRA FARE is charged. It makes connections at Minneapolis and St. Paul with Northern Pacific, Great Northern, and "Soo-Pacific" trains; and leaves daily Minneapolis 7:30 p. m.; St. Paul 8:10 p. m.; and arrives Chicago 8:50 a. m. For berth reservations, rates, folders and illustrated booklet FREE of the "Finest Train in the World" call at our address. Ticket Offices 218 Washington St., Portland; 606 First Avenue, Seattle; 205 Granite Block, Helena; 115 Nicollet Avenue, Minneapolis; 355 Robert St., St. Paul; 405 West Superior St., Duluth, or address T. W. TRADDALL, General Passengers Agent, St. Paul, Minn.