

The Dalles Daily Chronicle.

SUBSCRIPTION PRICE. One week \$ 15 One month 50 One year 6 00 MONDAY - - - MARCH 27, 1899

WILD FLIGHTS OF FANCY.

It would be hard to find anything more expansive than the imagination of the non-expansionists. It has always been so. Every addition of territory to the United States has been attended with the most stupendous prophecies of evil. An article by Champ Clark, in the "Conservative Review," on the American policy of expansion, is a fair specimen of this peculiarity. "The Jingoer," he says, "went 2600 miles to grab the Sandwich Islands; now they go 7000 to grab the Philippines."

One thing that dismays the Missouri congressman is that "A civilized person is apter to lapse into barbarism by associating with savages than the savage is to be civilized." Keeping the Philippines will therefore turn the people of the United States into barbarians. If we coerce the Filipinos, Mr. Clark asks, "how shall we escape the scorn of despots?" Perhaps we can't escape that no matter what we do. It might even be a good thing to cultivate. Passing to the navy "we should have an initial outlay of \$310,000,000 for battleships alone," and our standing army must be equal or superior to Germany's 562,352 men. Pensions would be colossal. All this would pale before the demoralization of American character, the seizures of supreme power, the destruction of the constitution, the smashing of the Monroe doctrine, and a betrayal by England. Revolution would close the scene. "And in that hour of our shame and misery," Mr. Clark concludes, "the verdict of mankind upon us will be: 'Served them right.'"

The new steamboat Spokane, built by the O. R. & N. Co. to ply on the Snake river between Riparia and Lewiston, is now complete, and in service. Steamer Lewiston is also in service, and the two steamers will alternate between Riparia and Lewiston, leaving Riparia daily except Sunday on arrival of train No. 4 from Portland and reaching Lewiston next day at 1 p. m. Returning, will leave Lewiston daily except Saturday at 12 o'clock noon, arriving at Riparia at 7 p. m., connecting with train No. 8 from Spokane. The Spokane has been specially constructed for the run mentioned above, and is thoroughly equipped with all modern appliances, electric lights, etc., and for speed and comfort will excel any craft that has ever been built for the Snake river. The Lewiston is her steady old self. Mar 4-1m

Elegant new Pullman palace sleepers between Portland and Chicago have just been placed in service via the O. R. & N., Oregon Short Line, Union Pacific and Chicago & Northwestern railways daily every day in the year. Cars are of the very latest pattern, in fact being the most improved up-to-date sleeping cars turned out by the Pullman Company. These new palaces will leave Portland on the evening fast train of the O. R. & N. arriving at Chicago the morning of the fourth day and running through without change via Granger and Omaha. 191f

Stockholders Meeting. Notice is hereby given that there will be an annual meeting of the stockholders of The Dalles, Portland & Astoria Navigation Co. at their office Saturday, April 1, 1899, at p. m., for the purpose of electing seven directors, and transacting such other business as may properly come before said meeting. By order of the president. The Dalles, March 6, 1899. L. E. CROWE, Secy.

Notice to Tax Payers. I will promptly close the tax roll and turn over the delinquent list to clerk on first Monday in April. Interest on all county warrants paid in for taxes shall cease on and after the turning over of such roll. ROBERT KELLY, Sheriff, Wasco Co. The Dalles, March 15, 1899.

A Beautiful Skin.

Ladies, if you desire a transparent, clear and fresh complexion use Dr. Bourdon's French Arsenic Complexion Wafers. Their effect is simply magical, possessing the wizard touch in producing and preserving a beautiful transparency and pellucid clearness of complexion, shapely contour of form, brilliant eyes, soft and smooth skin where the reverse exists. Even the coarsest and most repulsive skin, marred by freckles, moth, blackheads, pimples, vulgar redness, yellow and muddy skin are permanently removed, and a deliciously clear and refined complexion assured.

Price per small box, 50 cents; large box, \$1, or six large boxes, \$5. Sent to any address post paid and under plain wrapper upon receipt of the above amount. Write for free circular.

The Parisian Drug Co., 131 Montgomery St., San Francisco Cal.

FRENCH & CO., BANKERS.

TRANSACT A GENERAL BANKING BUSINESS Letters of Credit issued available in the Eastern States. Sight Exchange and Telegraphic Transfers sold on New York, Chicago, St. Louis, San Francisco, Portland Oregon, Seattle Wash., and various points in Oregon and Washington. Collections made at all points on favorable terms.

The Dalles, Portland and Astoria Navigation Co.



Sts. Regulator & Dalles City

Daily (except Sunday) between The Dalles, Hood River, Cascade Locks, Vancouver and Portland.

Touching at way points on both sides of the Columbia river.

Both of the above steamers have been rebuilt, and are in excellent shape for the season of 1899. The Regulator Line will endeavor to give its patrons the best service possible.

For Comfort, Economy and Pliability, travel by the steamers of The Regulator Line.

The above steamers leave Portland and Dalles at 7 a. m., and arrive at destination in ample time for outgoing trains. Portland Office, Oak St. Dock. The Dalles Office, Court Street.

W. C. Alloway, General Agent.

PROFESSIONALS.

DR. GEISENDORFFER Physician and Surgeon, Special attention given to surgery. Rooms 21 and 22. Tel. 328 Vogt Block

H. A. STURDEVANT, Dentist. Office over French & Co.'s Bank Phone 6. THE DALLES, OREGON

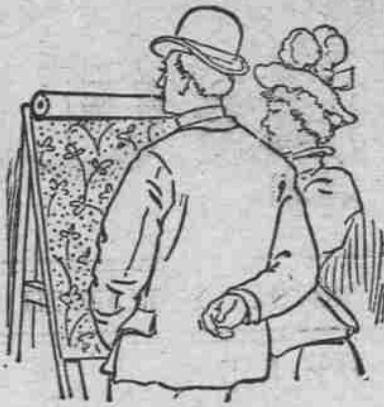
MOLLIE V. O'LEARY, Art Studio. Room 3, Chapman Block. China painting a specialty.

FRED. W. WILSON, ATTORNEY-AT-LAW, THE DALLES, OREGON. Office over First Nat. Bank.

H. S. HUNTINGTON & WILSON, ATTORNEYS AT LAW, THE DALLES, OREGON. Office over First Nat. Bank.

Branch Office Oregon Viavi Company, Room 7, over French's Bank. Office hours, 2 to 4 p. m. Charlotte F. Roberts, Local Manager.

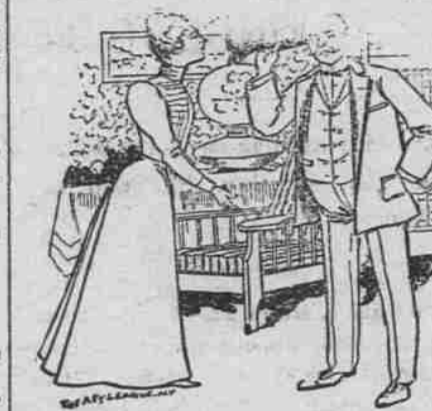
Just What You want.



New ideas in Wall Paper here. Such wide variety as we are showing never before graced a single stock. Real imitation creton effects at ordinary prices. Good papers at cheap paper prices. Elegant designs, tasteful colorings, yours for a small price, at our store on Third street. Also a full line of house paints.

D. W. VAUSE, Third St.

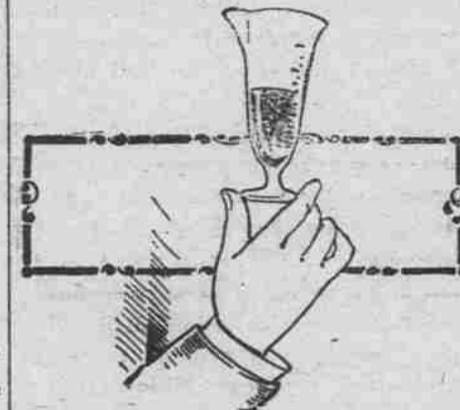
A Neglected Cold



is the forerunner of almost every ailment. It debilitates the system and leaves it an easy prey to disease. Loss of hearing and dimness of sight are amongst its ill effects. Our Syrup of Tar, Tolu and Wild Cherry for Colds and Coughs is not only a cure but a preventative. It tones up the system, increases the vitality and acts as a general bracer. Price 25c and 50c per bottle. But if you don't like our preparations we have all other kinds. We fill the doctor's orders too.

M. Z. DONNELL...DRUGGIST...

A good drug sign.



You well know that a good drug sign is the patronage which is bestowed on the store. It is the purity of the goods handled and the manner of doing business that makes and keeps this business. We are pleased with the result of our efforts to supply the best drugs at the best price. We are particular about the compounding of them.

Blahely & Houghton

RELIABLE PHARMACISTS. 175 Second Street. THE DALLES

Santa Fe Route

Offers travelers choice of the following routes east. They are all famous for their scenic attraction. O. R. & N. view Ogden and Denver. Santa Route view Sacramento, Ogden and Denver. Santa Route view Sacramento, Los Angeles and Albuquerque. A daily line of through PULLMAN PALACE and TOURIST SLEEPER, from San Francisco and Los Angeles to Chicago. This is

The Short Line To the East.

Apply to the agents of the O. R. & N. Co., or the undersigned, for folders and descriptive literature. J. J. DEVEREUX, Gen. Agt. Worcester, Bldg. Portland, Or.

O. R. & N.

Table with columns: DEPART FOR, TIME SCHEDULE FROM DALLES, ARRIVE FROM. Lists routes to Salt Lake, Denver, Ft. Worth, Omaha, Kansas City, St. Louis, Chicago, and East. Also includes routes to Spokane, Minneapolis, St. Paul, Duluth, Milwaukee, Chicago, and East. Includes a section for 'PARTIES DESIRING TO GO TO HEPPNER' with specific departure and arrival times.

Parties desiring to go to Heppner should take No. 4, leaving The Dalles at 5:30 p. m., making direct connections at Heppner Junction. Returning making direct connection at Heppner Junction with No. 1, arriving at The Dalles at 4:15 p. m. No. 22, through freight, east bound, does not carry passengers; arrives 2:50 a. m., departs 3:30 a. m. No. 21, local freight, carries passengers, east bound; arrives 4:30 p. m., departs 8:15 p. m. No. 21, west bound through freight, does not carry passengers; arrives 8:15 p. m., departs 8:30 p. m. No. 23, west bound local freight, carries passengers; arrives 3:15 p. m., departs 8:30 a. m. For full particulars call on O. R. & N. Co.'s agent The Dalles, or address W. H. HURLBURT, Gen. Pas. Agt., Portland, Or.

NORTHERN PACIFIC RY.

Pullman Sleeping Cars, Elegant Dining Cars, Tourist Sleeping Car. ST. PAUL MINNEAPOLI DULUTH FARGO GRAND FOR CROOKSTON WINNIPEG HELENA and BUTTE

Through Tickets

CHICAGO WASHINGTON PHILADELPHIA NEW YORK BOSTON AND ALL POINTS EAST AND SOUTH

For information, time cards, maps and tickets, call on or write to

W. C. ALLOWAY, Agent, The Dalles, Oregon. A. D. ARLTON, Asst. G. P. A., 25 Union Cor. Third, Portland Oregon

NORTHWESTERN TRAVELERS ARE "North-Western" Advertisers

is the Shortest and Best Route to CHICAGO and the EAST via MINNEAPOLIS and ST. PAUL; and also, the equipment of its trains is the most modern of the car builder's art, embodying all the luxuries, comforts and necessities of travel. THE NEW NORTHWESTERN LIMITED (20th Century Train)

Electric lighted both inside and out, and equipped with handsome buffet smoking-library car, compartment and standard sleepers, free hair car and modern day coach; and on which no EXTRA FARE is charged. It makes connections at Minneapolis and St. Paul with Northern Pacific, Great Northern and Soo-Pacific trains; and leaves daily Minneapolis 7:30 p. m.; St. Paul 8:15 p. m.; and arrives Chicago 9:30 a. m. For berth reservations, rates, folders and illustrated booklet FREE of the "Finest Train in the World" call at or address Ticket Offices 246 Washington St., Portland; 628 First Avenue, Seattle; 205 Granite Block, Helena; 113 Nicollet Avenue, Minneapolis; 395 Robert St., St. Paul; 495 West Superior St., Duluth; or address T. W. TEASDALE, General Passenger Agent, St. Paul, Minn.

C. J. STUBLING

Wholesale and Retail Wines, Liquors and Cigars. Agency for the Greatest American Liquor Yellowstone Sour Mash Whiskey.

WHISKEY from \$2.75 to \$8.00 per gallon. (4 to 15 years old.) IMPORTED COGNAC from \$7.00 to \$12.00 per gallon. (11 to 20 years old.) A LIORFIA BRANDIES from \$3.25 to \$6.00 per gallon. (4 to 11 years old.)

ONLY THE PUREST LIQUORS SOLD. HOP GOLD BEER on draught, and Val Blatz and Hop Gold Beer in bottles Imported Ale and Porter.

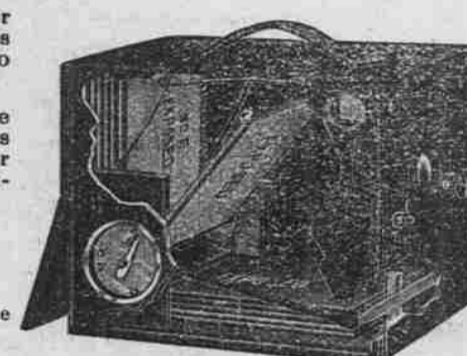
JOBBER IN IMPORTED and DOMESTIC CIGARS.

Wasc Warehouse Company

Headquarters for Seed Grain of all kinds. Headquarters for Feed Grain of all kinds. Headquarters for Rolled Grain, all kinds. Headquarters for Bran, Shorts, and all kinds of MILL FEED. Headquarters for "Byers' Best" Pendleton Flour. This Flour is manufactured expressly for family use; every sack is guaranteed to give satisfaction. We sell our goods lower than any house in the trade, and if you don't think so call and get our prices and be convinced. Highest Prices Paid for Wheat, Barley and Oats.

Rockford "Quick Shot" Quick Sellers No Complaints

12-Plate Magazine Camera. "Turn the lever and you are ready for another." No plate holders with slides to draw. No sleeve or changing bag. No chance to fog plates. No failures. If you want 12 pictures quick, buy the "Quick-Shot," the only magazine camera that holds the plates securely after they are exposed. No rattling or breaking of plates. Best on earth. 3 1/2 x 4 1/4 \$6.00 4x5 \$9.00 With one dozen plate holders. Manufactured under the Conley patents by the Rockford Silver Plate Co., ROCKFORD, ILL. We sell only through local agents. Ask our agents to show you this "Quick Shot."



The Snipes-Kinersly Drug Co. AGENTS, The Dalles, Oregon.

Grandall & Barget DEALERS IN All kinds of Funeral Supplies. Robes, Burial Shoes, Etc. THE DALLES, OR.

PIONEER BAKERY.

I have re-opened this well-known Bake, and am now prepared to supply everybody with Bread, Pies and Cakes. Also all kinds of Staple and Fancy Groceries. GEORGE RUCH, Pioneer Grocer.

...Spring Is Coming...

And F. S. GUNNING, the blacksmith, is prepared to put your buggies plows and farm implements in proper shape.

Second and Laughlin Streets, Phone 157. THE DALLES, OREGON.

Advertise in...

The... Chronicle